

Sand Pine Management in the Urban Interface at SJRWMD



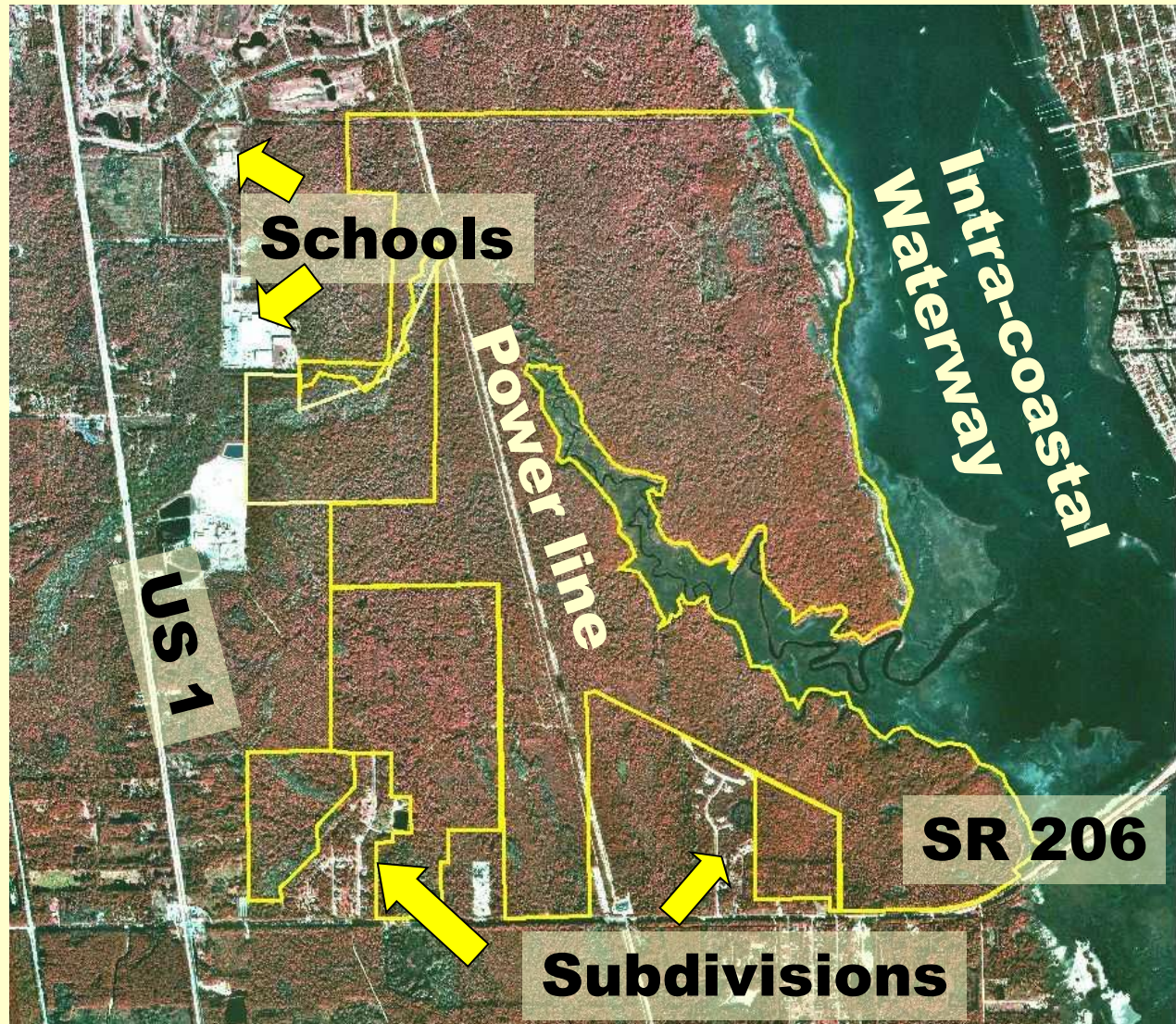
What is the status of Urban Interface at SJRWMD?

District manages 395,251 acres 25% is urban interface (98,812 acres)



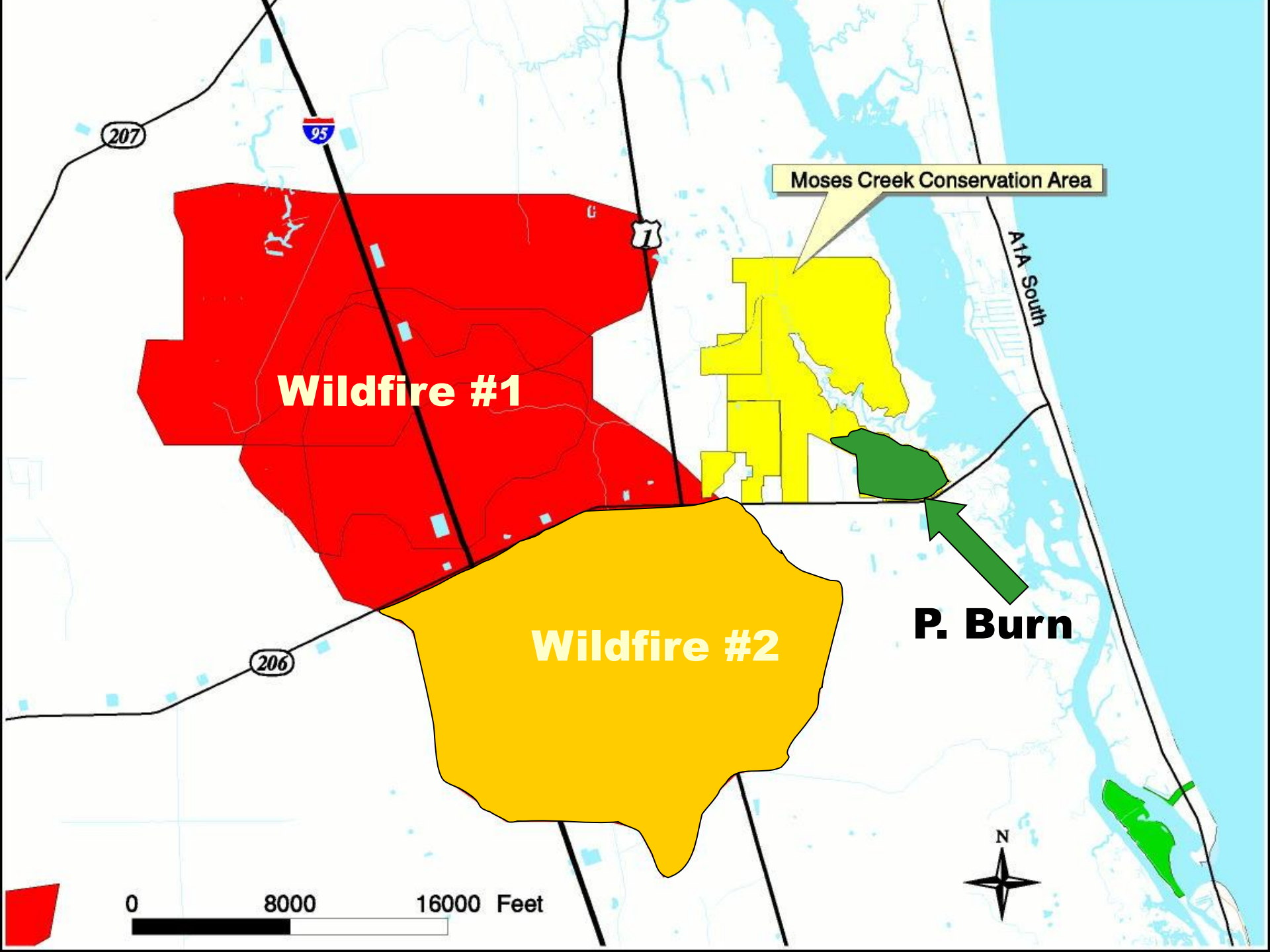
Moses Creek

- Acquired in 3/1995
- Most difficult urban interface case at the time
- Heavy fuel loads

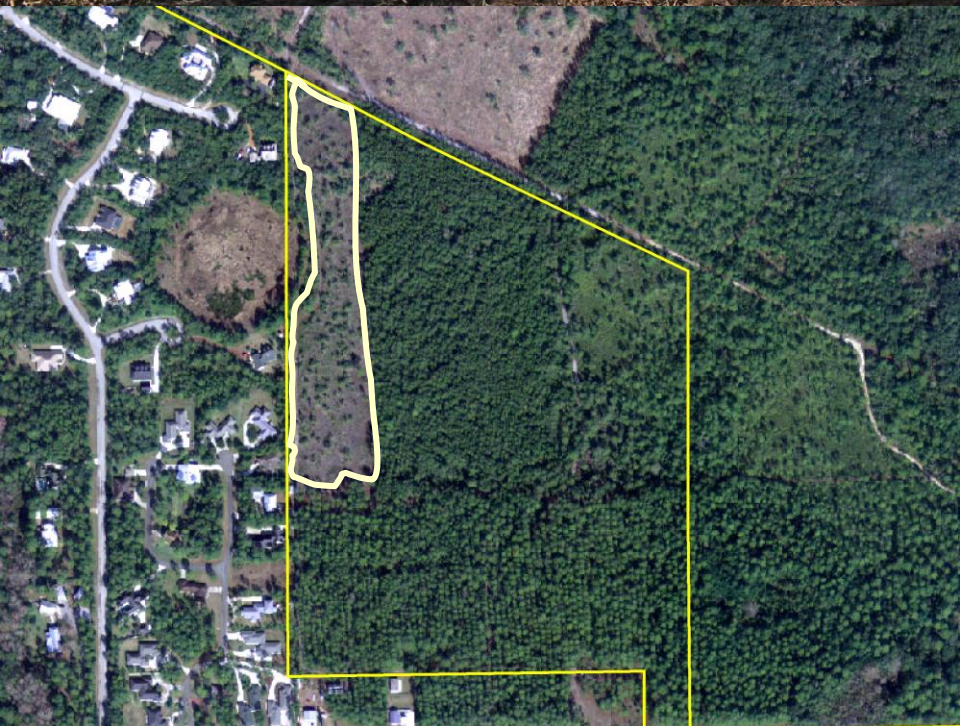


The neighbors













- Local Sierra Club objected
- Staff held tours and developed interpretive signs
- Neighbors pleased



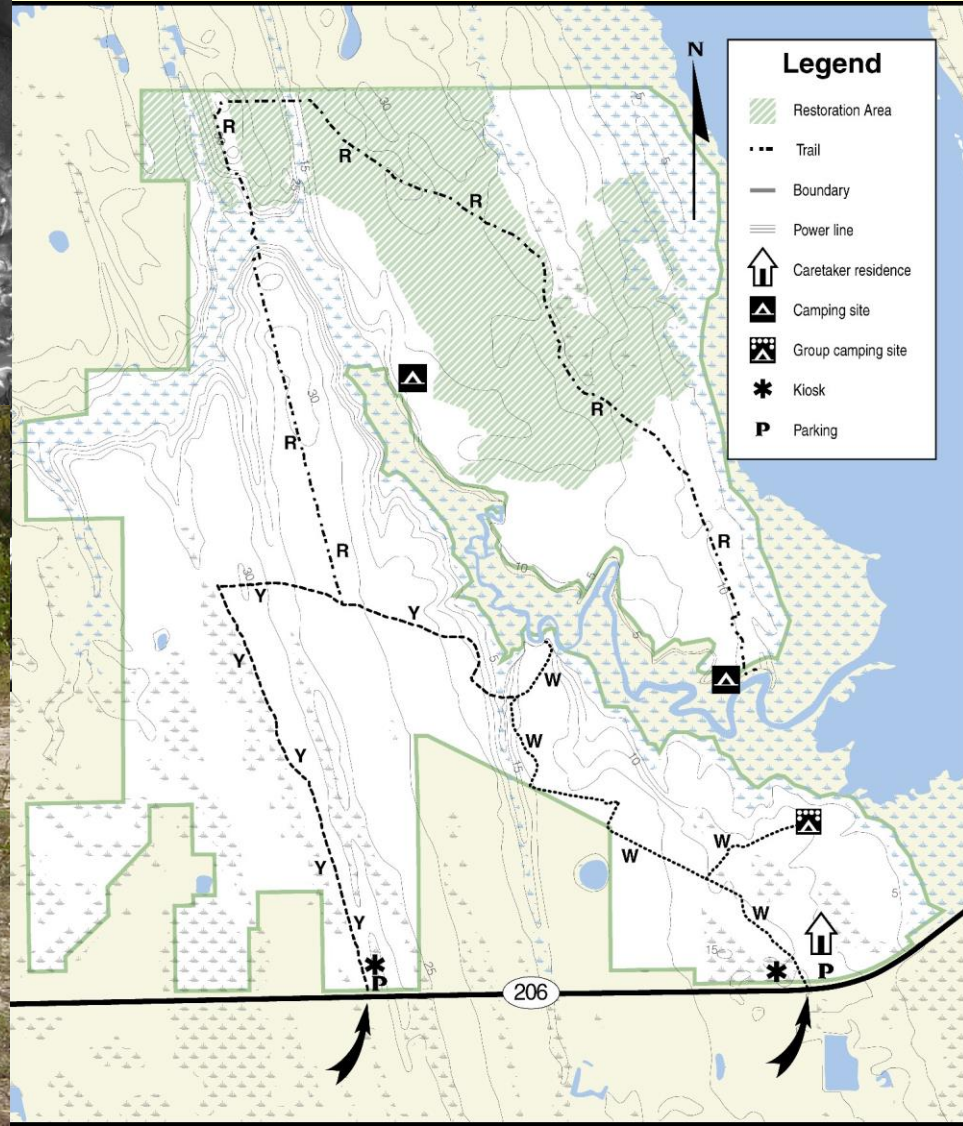
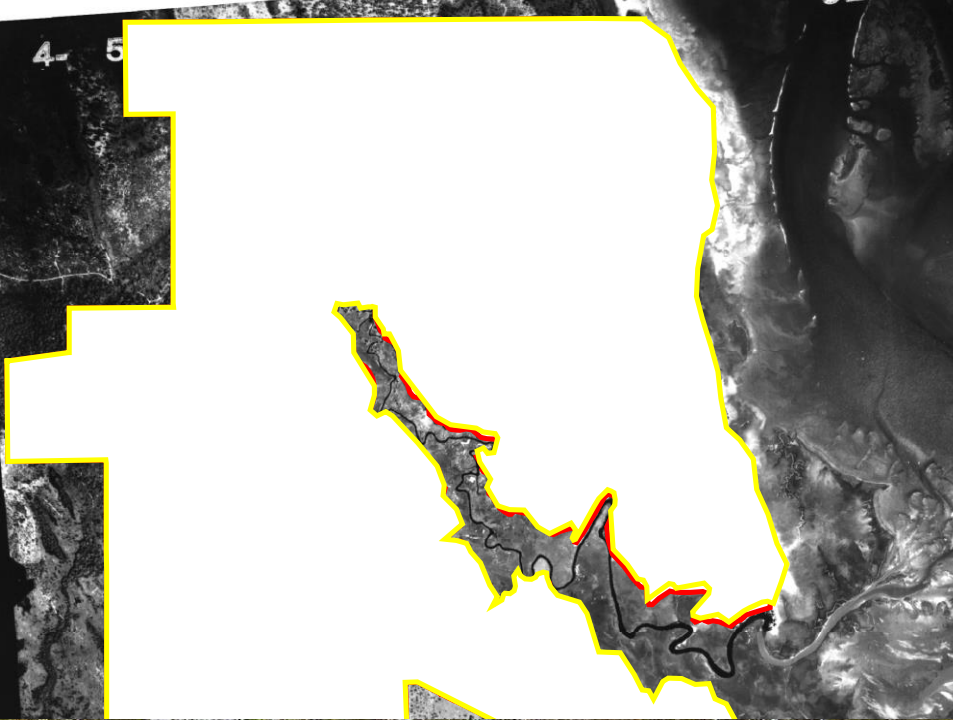


- 2004 hurricanes dropped much remaining sand pine

- Burned 3 acres in June.
- 137 staff hours
- 11,000 gallons to mop up



Adaptations for round two



Fire

- Still requires more staff and equipment
- 1.36 acres /staff hour versus average of 8.56
- But we have defensible space



What is the future?

- Interface impacts will increase

