

Public Land Acquisition Program Lake County

Public Land Acquisition and Management
Conference

November 2, 2006

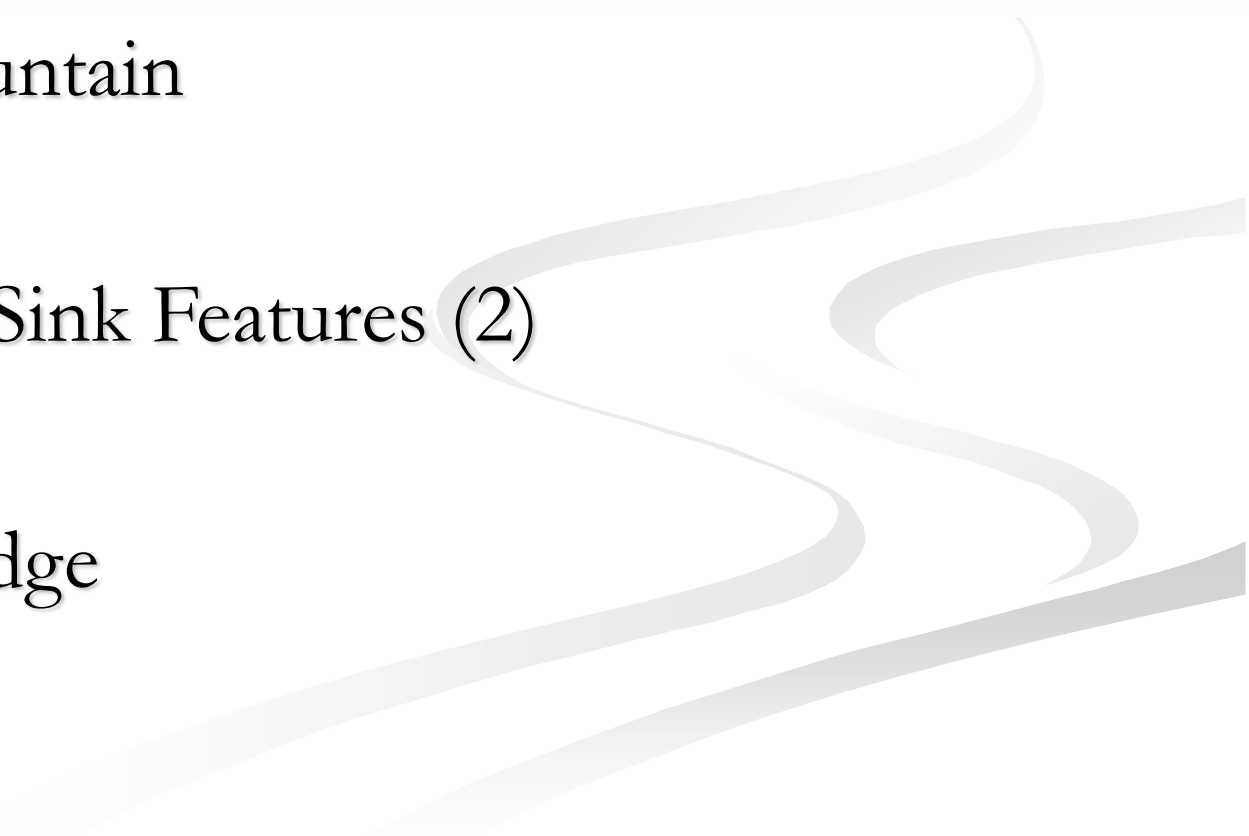


LAKE COUNTY
FLORIDA

Lake County – Natural Features

- Ocala National Forest
 - Wekiva River Basin
 - Green Swamp
 - St. Johns River
- 
- A decorative graphic consisting of several overlapping, wavy, light gray lines that flow from the right side of the slide towards the left, creating a sense of movement and depth.

Lake County – Natural Features

- 1000 Named Water Bodies
 - Sugarloaf Mountain
 - Stream – to – Sink Features (2)
 - Lake Wales Ridge
- 
- A decorative graphic consisting of several thick, light gray, wavy lines that flow from the right side of the slide towards the left, partially overlapping the text area.

Natural Features

Images of Lake County

The background of the slide features several thick, light gray, wavy lines that flow from the bottom left towards the right side, creating a sense of movement and depth.













Other Features

More Images of Lake County

The background of the slide features several light gray, wavy, horizontal lines that sweep across the lower right portion of the frame, creating a sense of movement and depth.











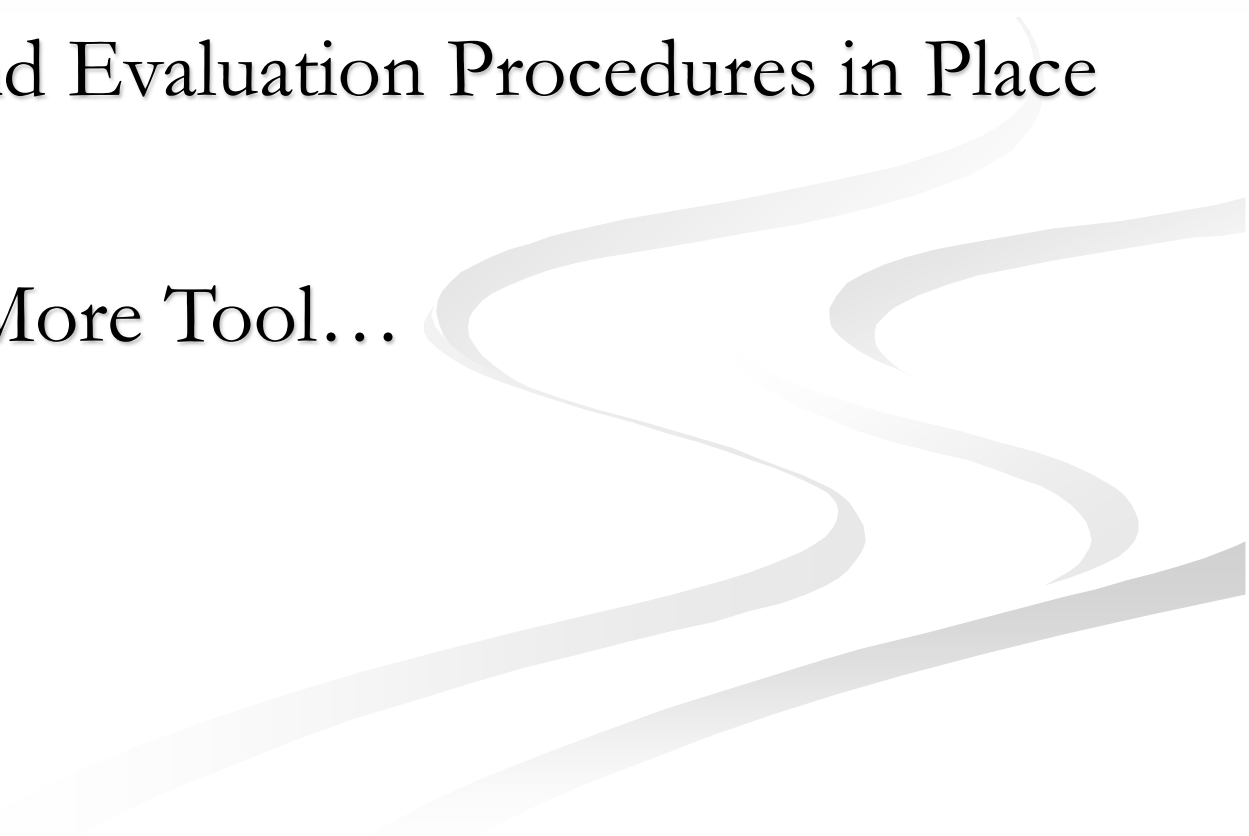
What and How to Preserve?



How to Preserve?

- Grassroots Effort to Put a Referendum on Ballot
- Referendum Passed in 2004
- \$36 Million in Bonds to be Issued
- Citizen Advisory Council Established (PLAAC)
- Public Lands Management Division Created

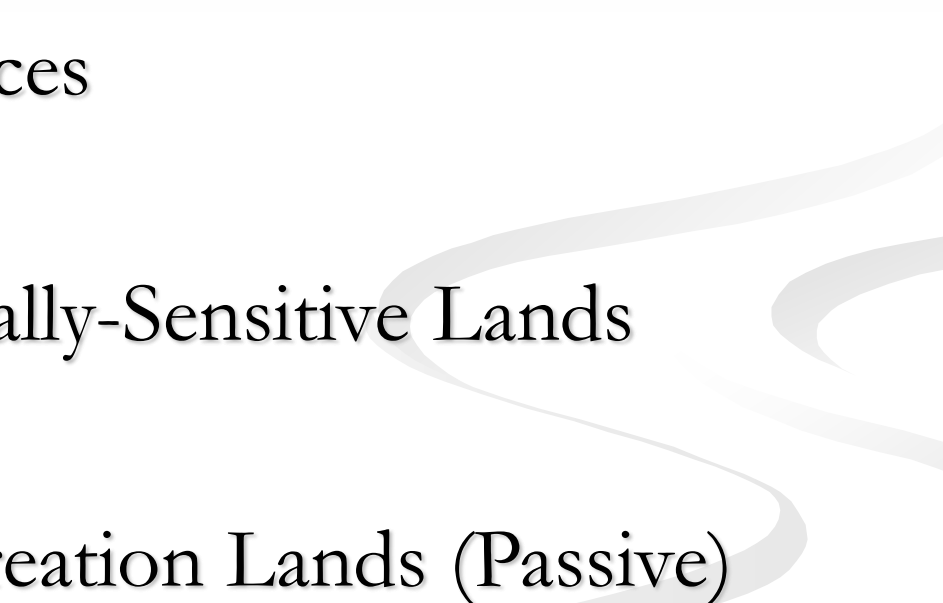
What to Preserve?

- Site Evaluation Criteria Adopted
 - Application and Evaluation Procedures in Place
 - Needed One More Tool...
- 
- A decorative graphic consisting of several thick, light gray, wavy lines that flow from the right side of the slide towards the left, partially overlapping the text of the third bullet point.

Greenprint Model

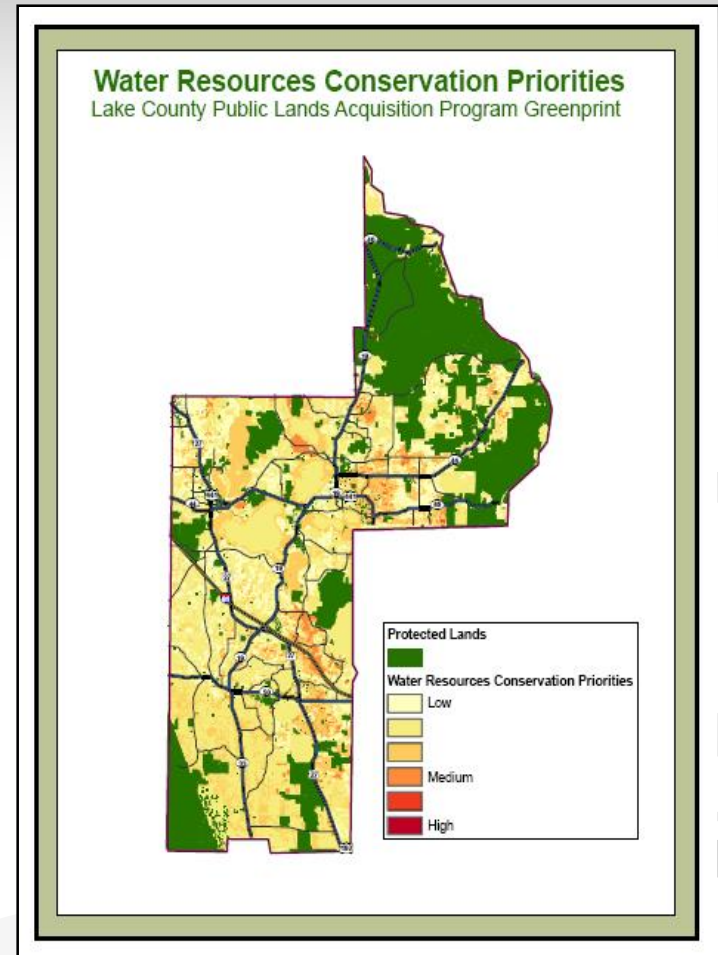
- Contracted with the Trust for Public Lands
- Spatial Representation(s) of Evaluation Criteria - a Map
- “Report Card” on Individual Properties Relative to Criteria
- Parcel-Based
- Added Bonus: Matching Funds and Partnerships

Greenprint Model

- Three Main Focus Areas for Site Evaluation:
 - Water Resources
 - Environmentally-Sensitive Lands
 - Provides Recreation Lands (Passive)
- 

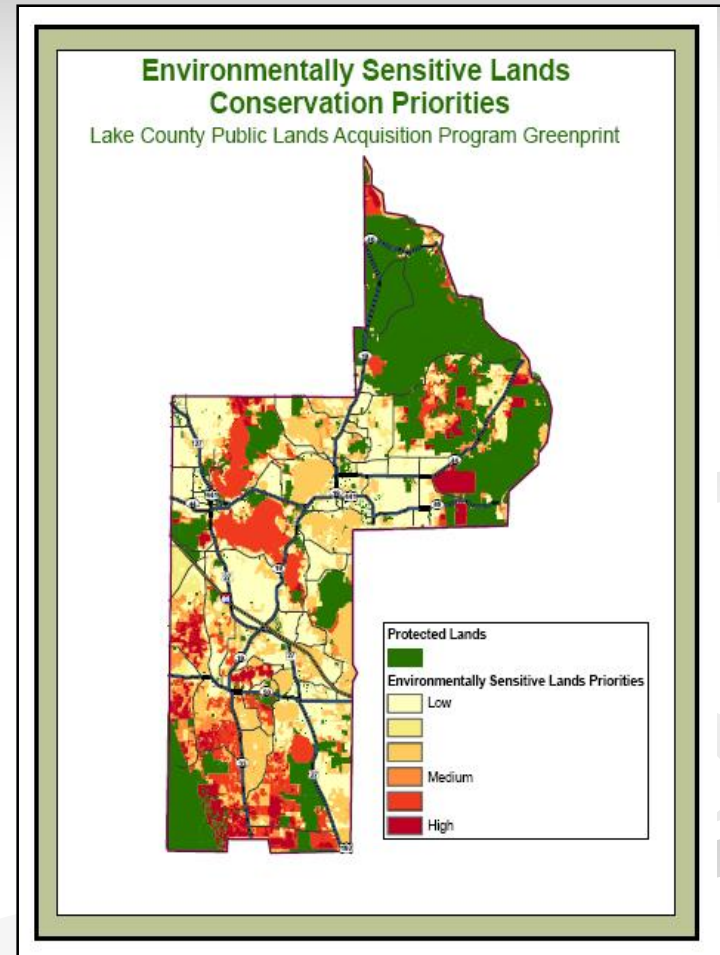
Water Resources

- **Criterion:** Significant Area Of High Recharge Rates
- **Model Criterion:** SJRWMD “Bluebelt” Ordinance Definition
- **Data Source:** SJRWMD Significant Recharge Dataset; STATSGO Database-NRCS



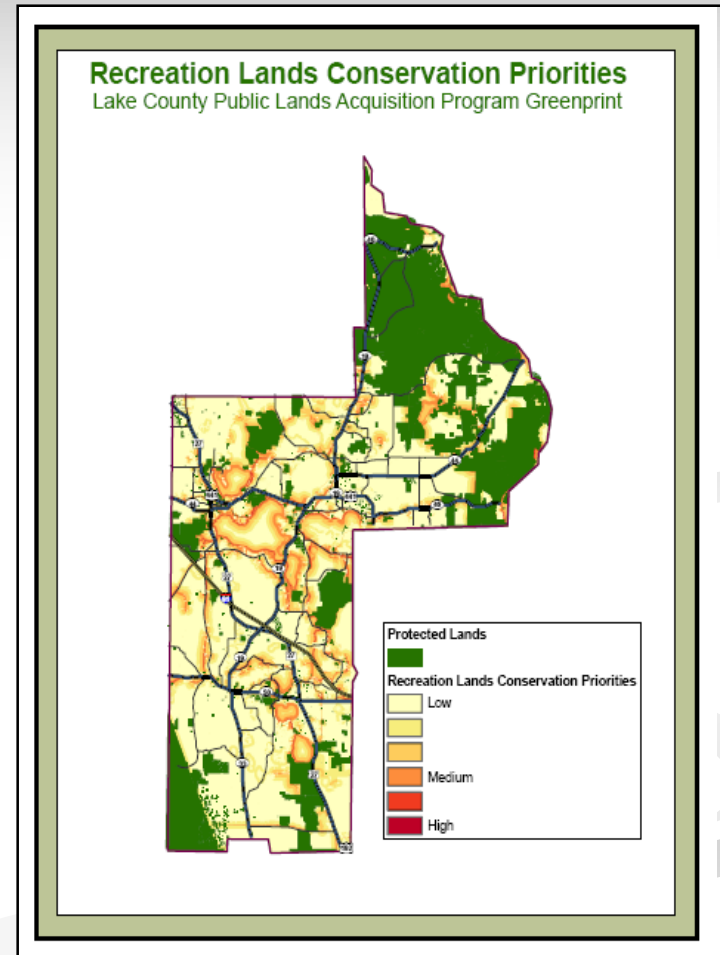
Environmentally-Sensitive Lands

- **Criterion:** Protects One or More Biological Communities
- **Model Criterion:** Florida Natural Areas Inventory
 - **Data Source:** 1995 Florida Natural Areas Inventory – “Qualifying”

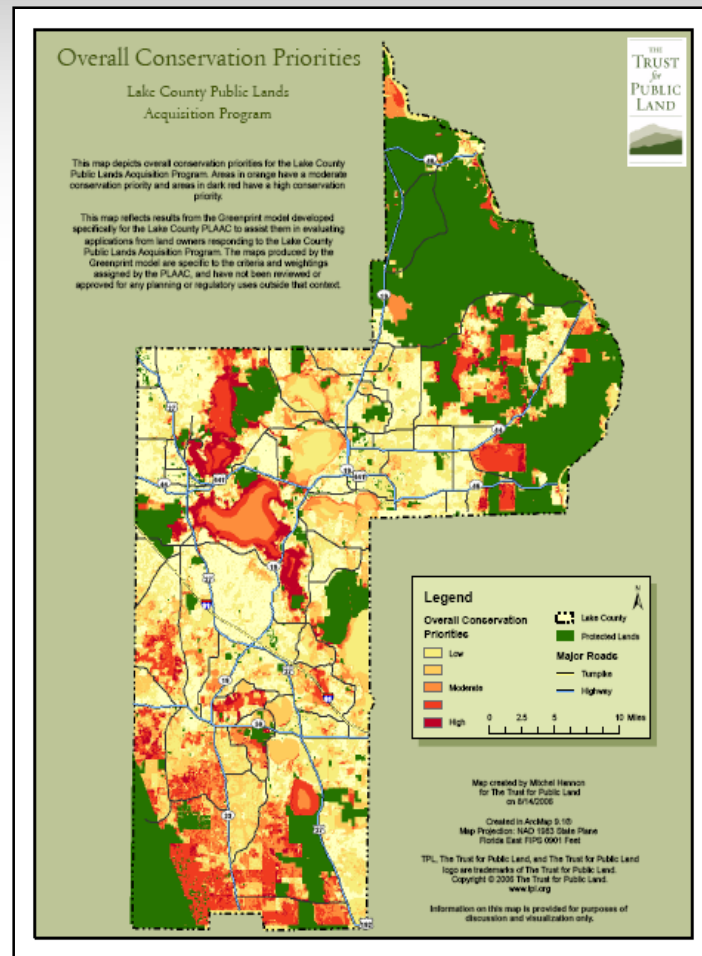


Provides Recreation Lands

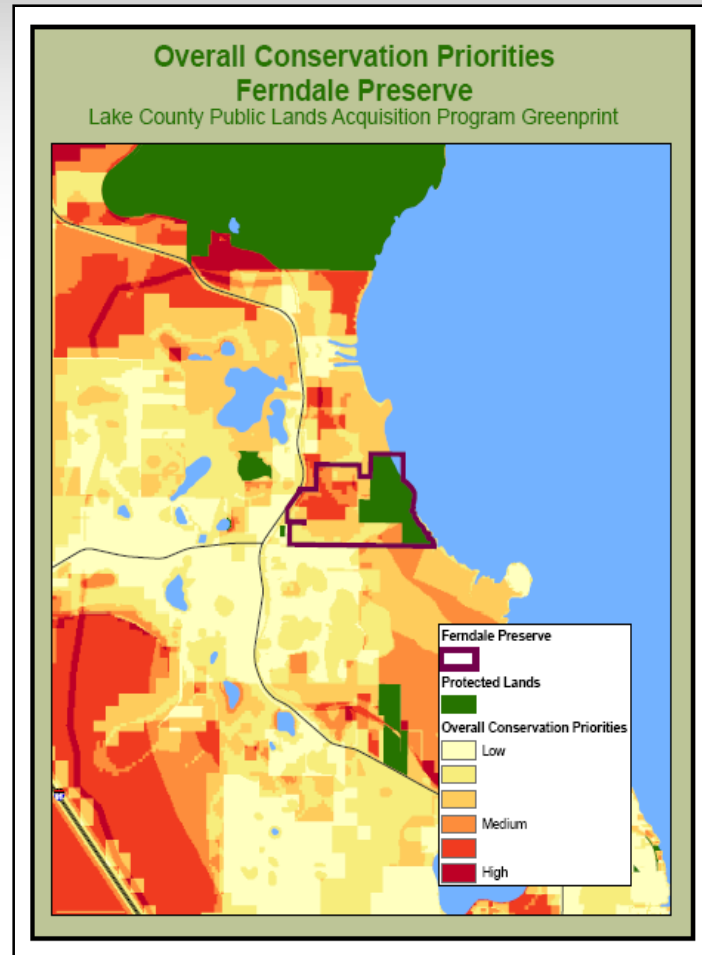
- **Criterion:** Potential for Resource-Based Public Use...
- **Model Criterion:** Abandoned and Active Railways, Blueways Plan, Proposed Trails
- **Data Source:** Lake County GIS and Parks and Recreation Master Plan(s)




Greenprint Model Output - County



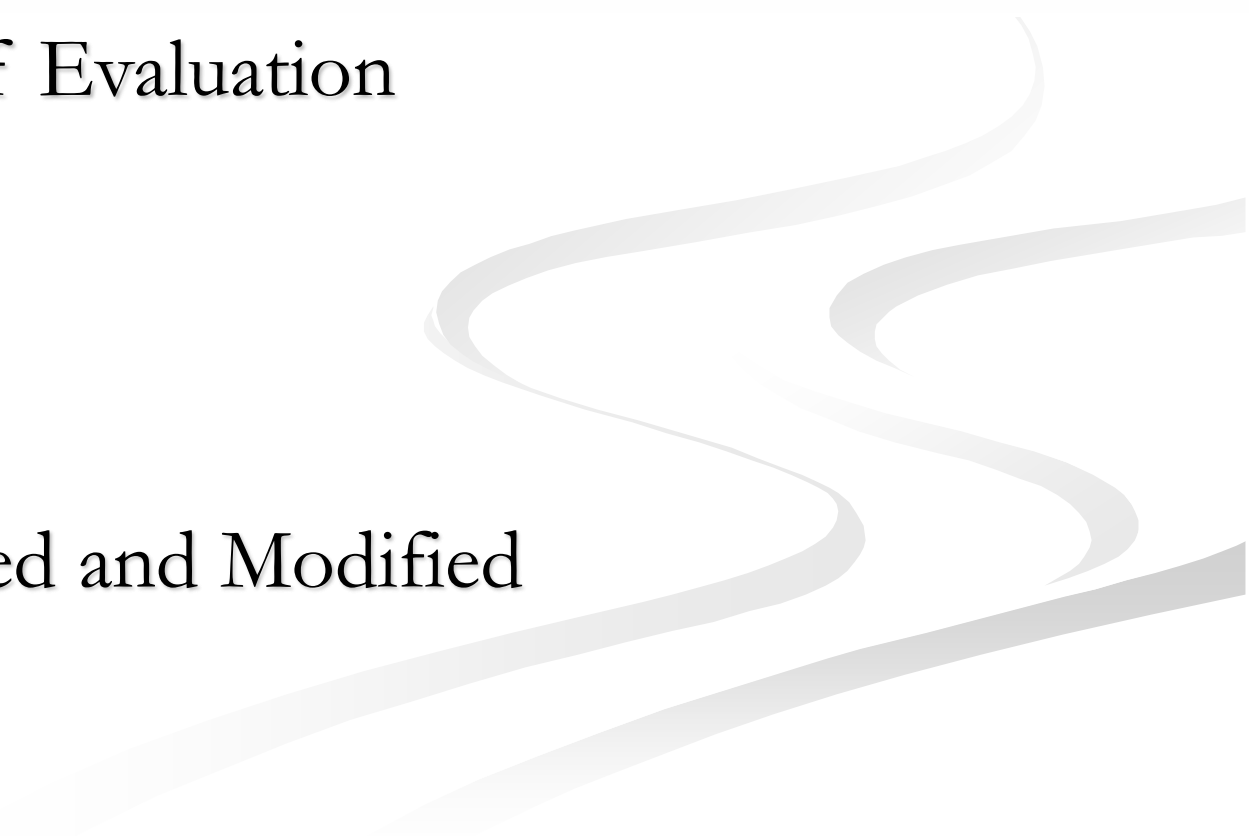
Greenprint Model Output – Specific Property




Greenprint Model Output – Specific Property

 Lake County PLAAC Evaluation Report July 28, 2006 Property Name: Ferndale Preserve Total Property Acres: 191 PLAAC Score: 9/13				
		Priority Acres In Property	% of Total Property	PLAAC Score
A: WATER RESOURCES				
A1: Significant area of documented high recharge rates				
	A1: Significant area of documented high recharge rates	43.0	22.5%	✓
Subcomponents				
	SJRWMD BlueBelt Ordinance Definition for Significant Groundwater Recharge Areas	43.0	22.5%	
A2: Water bodies or wetlands capable of protecting natural floodplain functions				
	A2: Water bodies or wetlands capable of protecting natural floodplain functions	85.8	44.9%	✓
Subcomponents				
	Floodplain	19.6	10.3%	
	Greenswamp - Area of Critical Concern	0.0	0.0%	
	Lakes	4.6	2.4%	
	Outstanding Florida Waters	0.0	0.0%	
	Rivers and Creeks	0.0	0.0%	
	Vacant Undeveloped Lakefront Properties	48.9	25.6%	
	Wetlands	54.5	28.5%	
A3: Aquifers, springs, and/or significant geological features are present				
	A3: Aquifers, springs, and/or significant geological features are present	0.0	0.0%	
Subcomponents				
	Springs	0.0	0.0%	
	Stream to Sink Features	0.0	0.0%	

Greenprint Model

- Important Tool for Evaluation
 - Affirmation of Evaluation
 - “Map”
 - Can be Updated and Modified
- 
- A decorative graphic consisting of several thick, light gray, wavy lines that flow from the right side of the slide towards the left, creating a sense of movement and depth.

Put It All Together

- Dedicated Funding Source
 - Community and Political Support
 - Tools in Place
 - Natural Resources
- 
- The bottom right portion of the slide features several thick, light gray, wavy lines that flow from the right edge towards the center, creating a sense of movement and depth.



Thank You

The background features a light gray gradient. In the lower right quadrant, there are several thick, overlapping, wavy lines in a slightly darker shade of gray, creating a sense of movement and depth.

Public Land Acquisition Program Lake County

Public Land Acquisition and Management
Conference

November 2, 2006



LAKE COUNTY
FLORIDA