



*Northern Palm Beach County
Natural Areas Master Plan*
Northeast Everglades Natural Area

August 3, 2006



GLATTIG JACKSON KERCHER ANGLIN LOPEZ RINEHART, INC.

Community Planning

- **Project Objectives, Scope**
- **Parts I, II - Data Collection, Mapping**
- **Part III - Needs Assessment**
- **Part IV - Vision**

- **Identification and Mapping of Existing Public Use Facilities**
- **Completion of a Community-wide Needs Assessment Related to the Public Use of Natural Areas and Educational/Research Facilities**
- **Identification of Constraints and Opportunities Associated With the NPB County Natural Areas System**
- **Identification and Mapping of Additional Future Public Use Facilities, Including Trails, Parking Areas, Kiosks, Education/ Research Facilities, etc.**
- **Identification of Additional Properties That Should be Considered for Acquisition to Complete Greenways**
- **Development of a Natural Areas Master Plan**
- **Inclusion of the Public, Municipalities and State Management Agencies in the Planning Process**

Part I Data Collection/Review

Part II Existing System Mapping and Analysis

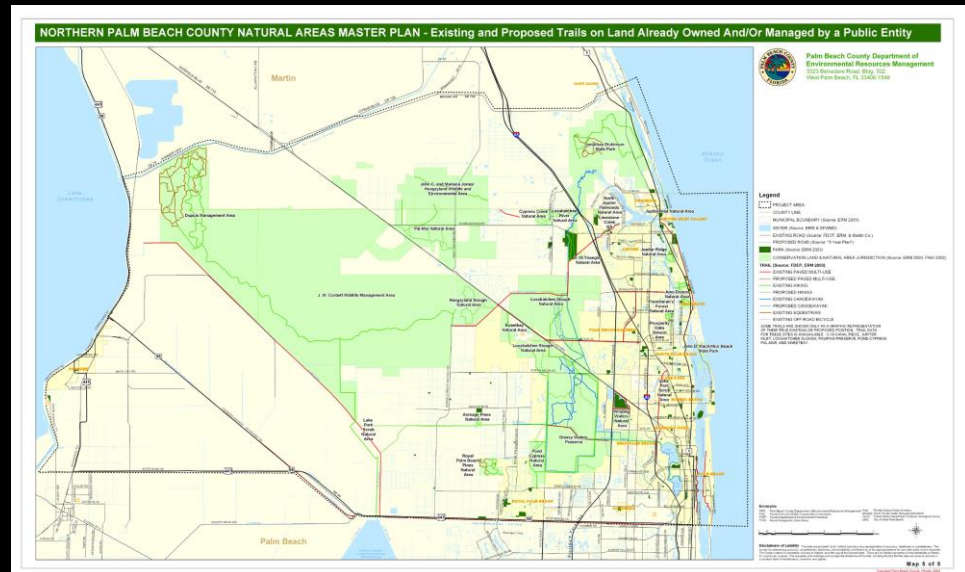
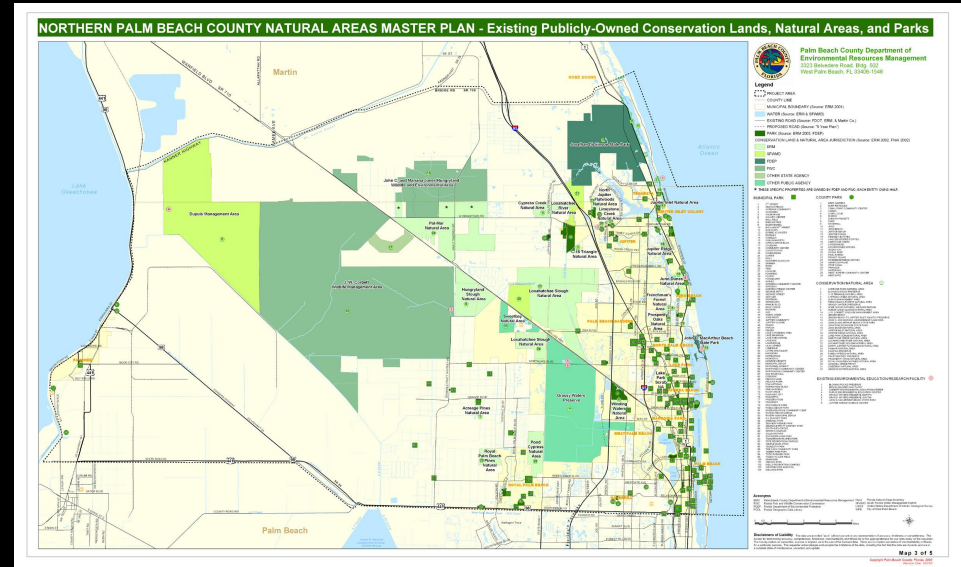
Part III Needs Assessment

Part IV Natural Areas Master Plan



Parts I,II – Data Collection, Mapping

- Palm Beach County Environmental Resources Management, Parks and Recreation, and Planning, Zoning and Building Departments
- South Florida Water Management District
- Florida Department of Environmental Protection
- Florida Fish and Wildlife Conservation Commission
- City of West Palm Beach
- Palm Beach Metropolitan Planning Organization
- Municipalities
- Books, Pamphlets, Publications, Other Sources



- Natural Areas
- Parks
- Trails and Trailheads
- Roadway and Canal ROWs
- Utility Corridors
- Education Centers



Incredible Diversity – Natural Systems



Incredible Diversity – Education Facilities and Opportunities



Incredible Diversity – Recreation Facilities and Opportunities



Part III - Needs Assessment

- Interviews With Palm Beach County Commissioners
- Interviews With Partner Agencies
- Interviews With Environmental Education Providers and Researchers
- Focus Group Meetings
 - Hikers
 - Bikers
 - Equestrians
 - Education Providers
 - Environmental Interests
- Two Public Workshops
- Natural Areas Management Advisory Committee (NAMAC) Workshop
- Service Area Analysis
- Countywide Telephone Survey
- Conservation Land Acquisition Selection Committee (CLASC) Workshop



July 11 Public Meeting



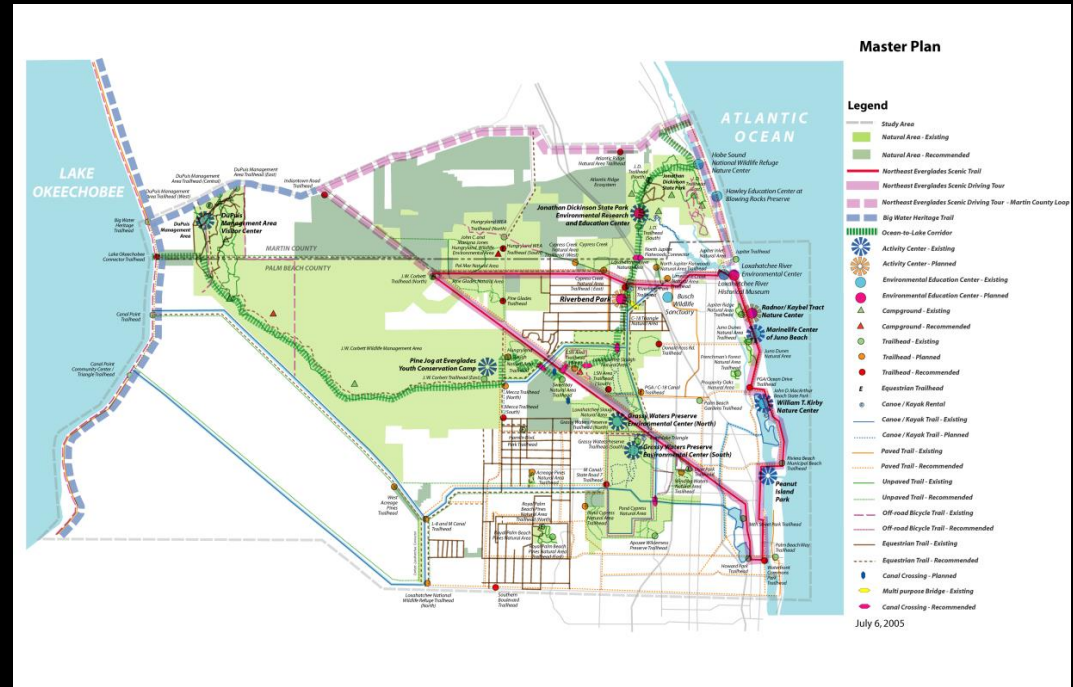
Summary of Needs and Priorities



- **Strict guidelines to define acceptable uses on County-managed natural lands**
 - **A variety of high-quality recreation and environmental education experiences, ranging from several hours to a full day of activity**
 - **The quality and accessibility of the experience appears to be a much higher priority than the quantity of experiences**
-
- **An interconnected system of natural areas and trails for both wildlife/resource protection and resource-based recreation**
 - **Coordination of acquisition, trail development, education programming and marketing between agencies**
 - **Full range of amenities at trailheads and sites, including restrooms, drinking water (for both humans and horses!), maps, information, etc**

Part IV - Vision

NENA – A World-Class Destination

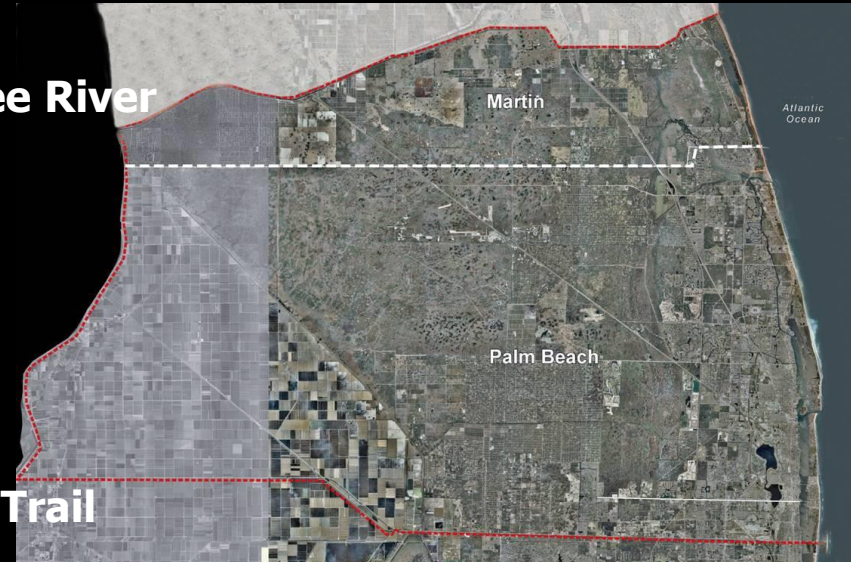


An Integrated System of Sites and Connectors That:

- Protects, preserves and enhances the unique natural resources of Palm Beach and Martin Counties
- Enhances the recreation, education and research opportunities for area residents and visitors
- Increases awareness and public support for the continued acquisition and/or management of natural lands

NENA – By the Numbers

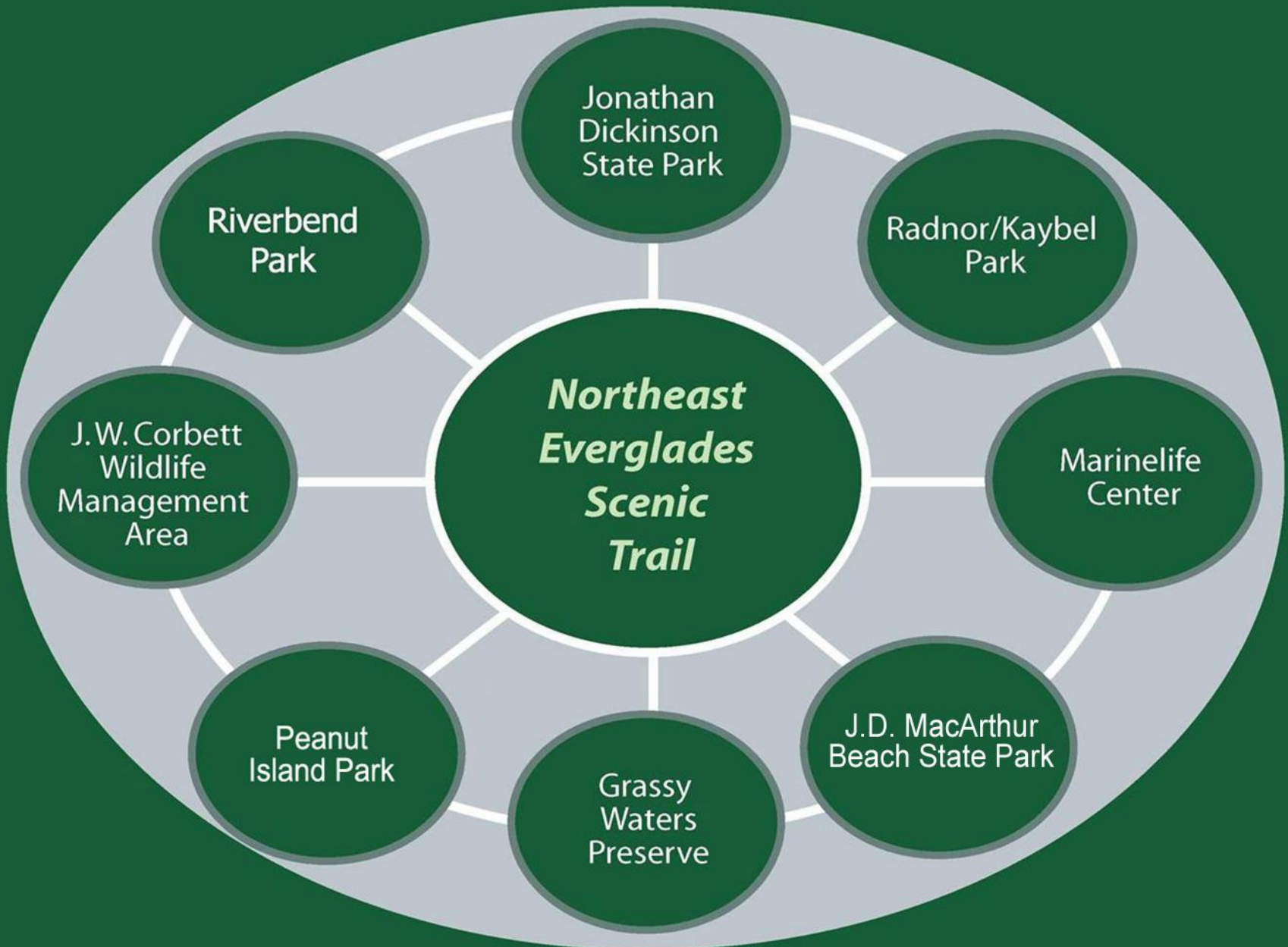
- **145,000+/- acres of existing public lands**
- **Connects to 467,200-acre Lake Okeechobee**
- **14 miles of coastline on the Atlantic Ocean**
- **16+/- miles of Wild and Scenic Loxahatchee River**
- **+/- 72-mile Ocean-to-Lake Trail**
- **Over 300 miles of trails connecting to 110-mile Lake Okeechobee Scenic Trail**
- **Over 75 miles of scenic driving trails connecting to 100-mile Big Water Heritage Trail**



Comparisons

- **Biscayne National Park – 173,000 acres (95% under water)**
- **Yosemite National Park – 750,000 acres**
- **Everglades National Park – 1,508,500 acres**
- **Potomac Heritage Trail Corridor – 185 miles**
- **Blue Ridge Parkway – 469 miles**
- **Golden Gate National Recreation Area - 75,500 acres (28 miles coastline)**

System of Sites and Connectors



Sites - Environmental Education Centers



Blowing Rocks Preserve

Connector - Scenic Driving Tour



Legend

-  Study Area
-  Natural Area - Existing
-  Northeast Everglades Scenic Driving Tour
-  Northeast Everglades Scenic Driving Tour - Martin County Loop
-  Big Water Heritage Trail
-  Activity Center - Existing
-  Activity Center - Planned
-  Environmental Education Center - Existing
-  Environmental Education Center - Planned
-  Campground - Existing
-  Campground - Recommended
-  Trailhead - Existing
-  Trailhead - Planned
-  Trailhead - Recommended
-  Equestrian Trailhead



40+/- miles Palm Beach Loop;
35+/- miles Martin Loop;
110 +/- mile BWHT

Connector - Northeast Everglades Scenic Trail (NEST)



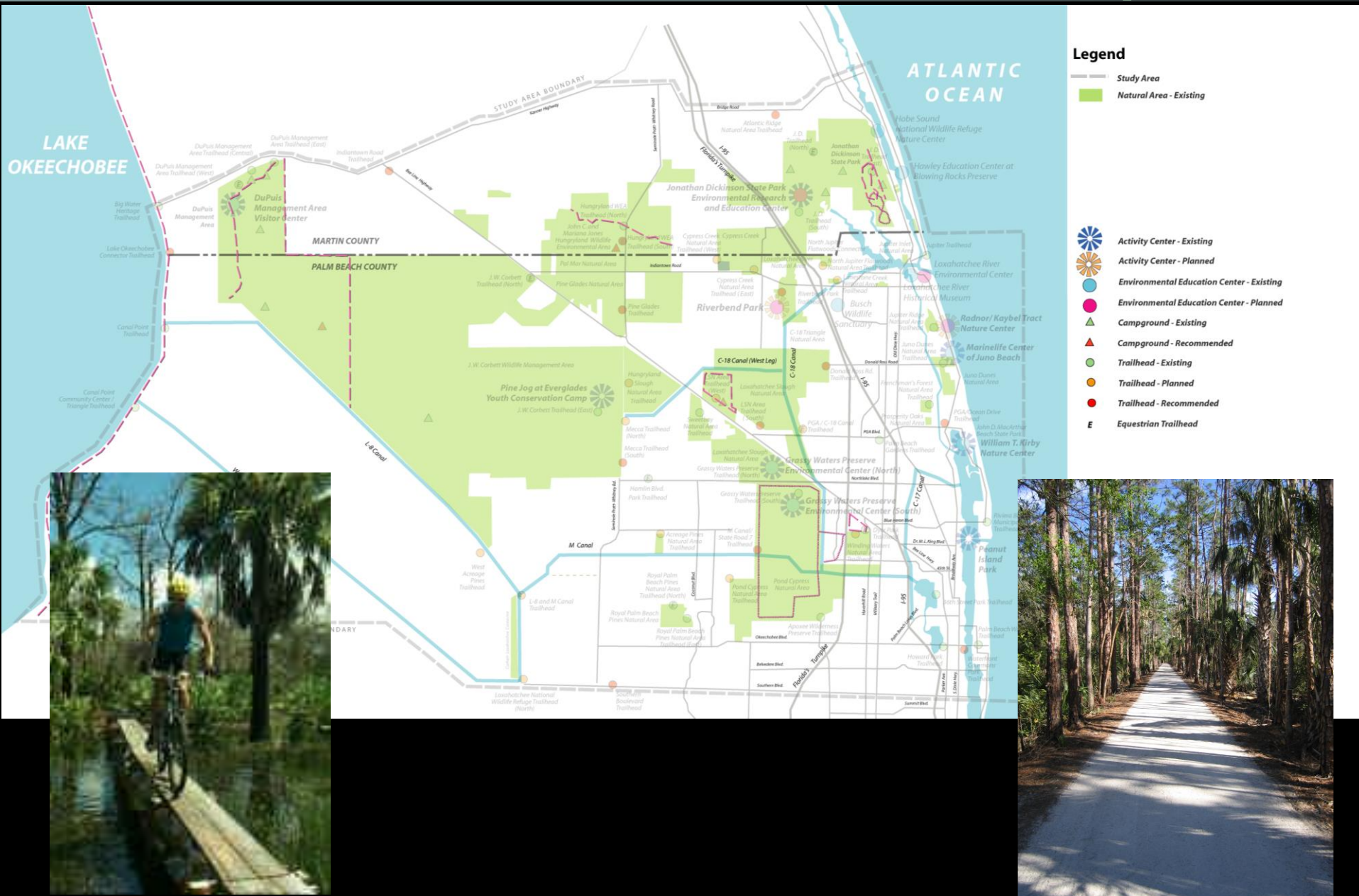
- ### Legend
- Study Area
 - Natural Area - Existing
 - Northeast Everglades Scenic Trail
 - Activity Center - Existing
 - Activity Center - Planned
 - Environmental Education Center - Existing
 - Environmental Education Center - Planned
 - Campground - Existing
 - Campground - Recommended
 - Trailhead - Existing
 - Trailhead - Planned
 - Trailhead - Recommended
 - Equestrian Trailhead



40+/- miles

PGA Boulevard/ Mirasol Trail

Connectors - Off-road Bicycle Trails



Jonathan Dickinson Off-road Bicycle Trails



Riverbend Park Crushed Shell Trails

Connectors - Proposed Acquisition Corridors

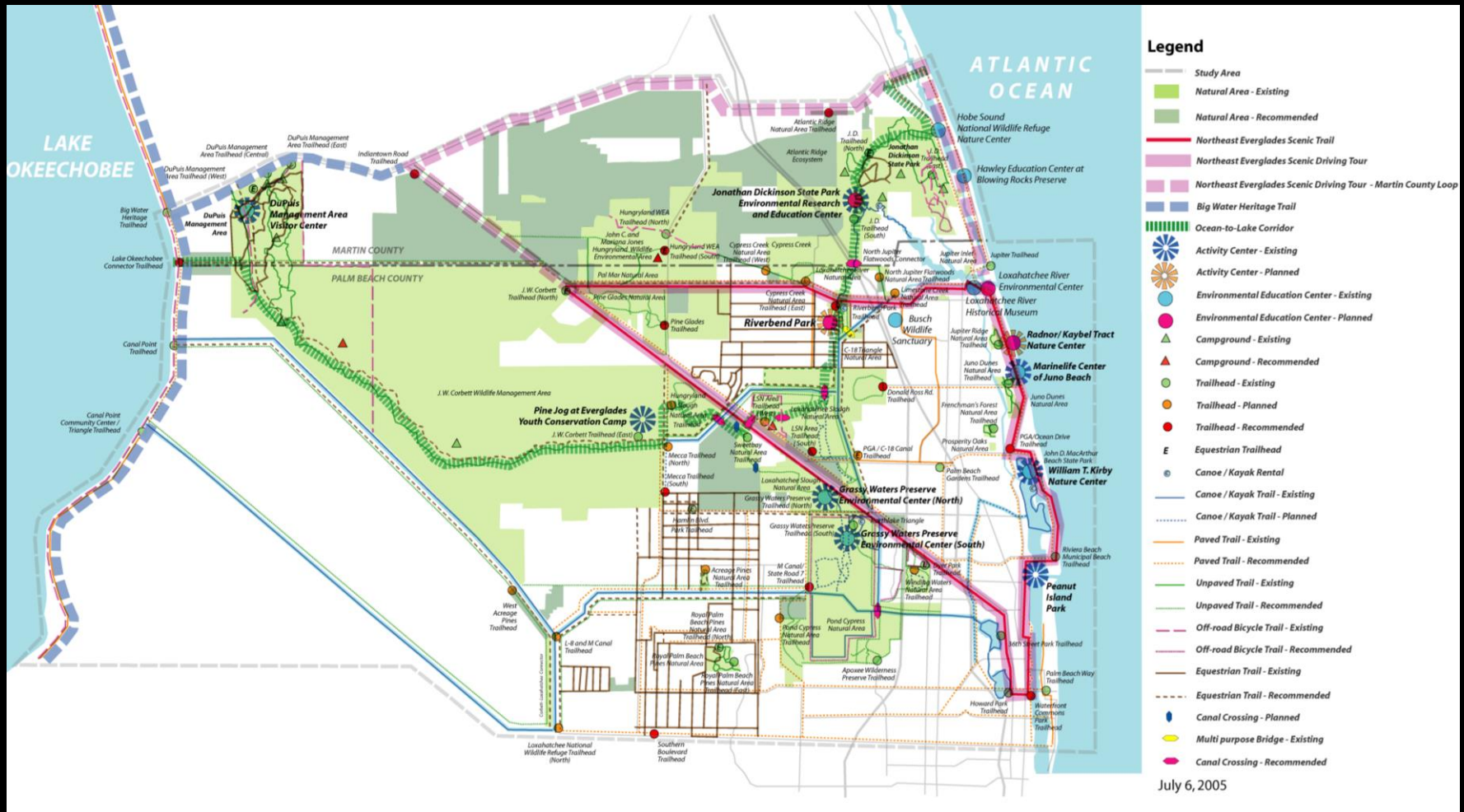


Other Recommendations

- **Coordination of Environmental Education Programs**
- **Coordination of Trail Development and Maintenance**
- **Establishment of a Public Arts Program**
- **Development of an Interpretive Signage/ Way-finding System**
- **Protection of Historic Scenic Landscapes**



NENA – A World-Class Destination



An Integrated System of Sites and Connectors That:

- Protects, preserves and enhances the unique natural resources of Palm Beach and Martin Counties
- Enhances the recreation, education and research opportunities for area residents and visitors
- Increases awareness, public support for the continued acquisition and/or management of natural lands

- **Identification and Mapping of Existing Public Use Facilities**
- **Completion of a Community-wide Needs Assessment Related to the Public Use of Natural Areas and Educational/Research Facilities**
- **Identification of Constraints and Opportunities Associated With the NPB County Natural Areas System**
- **Identification and Mapping of Additional Future Public Use Facilities, Including Trails, Parking Areas, Kiosks, Education/ Research Facilities, etc.**
- **Identification of Additional Properties That Should be Considered for Acquisition to Complete Greenways**
- **Development of a Natural Areas Master Plan**
- **Inclusion of the Public, Municipalities and State Management Agencies in the Planning Process**

Implementation Strategies

General:

- **Sign and Way-finding System**
- **Recreation and Environmental Education Programs**
- **Marketing and Promotion**
- **Development Review**
- **Public Art**
- **Land Acquisition**

Destinations:

- **Activity Centers and Environmental Education Centers**
- **Trailheads, Campgrounds**

Trails:

- **NEST**
- **Scenic Driving Tour**
- **Ocean-to-Lake Trail**
- **Off-Road Bicycle, Equestrian, Canoe/Kayaking Trails**



*Northern Palm Beach County
Natural Areas Master Plan*
Northeast Everglades Natural Area

August 3, 2006



GLATTIG JACKSON KERCHER ANGLIN LOPEZ RINEHART, INC.

Community Planning