

Assessing and Responding to Material Risk

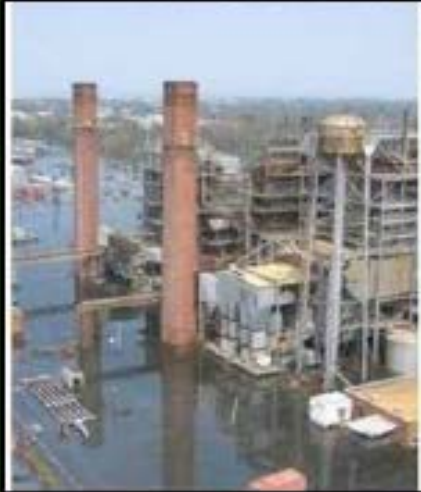
Building a Resilient Coast is Important Even in Today's Climate

FAU Sea Level Rise Summit 2013: Resilience in the Face of Change
Fort Lauderdale, FL
October 16 , 2013

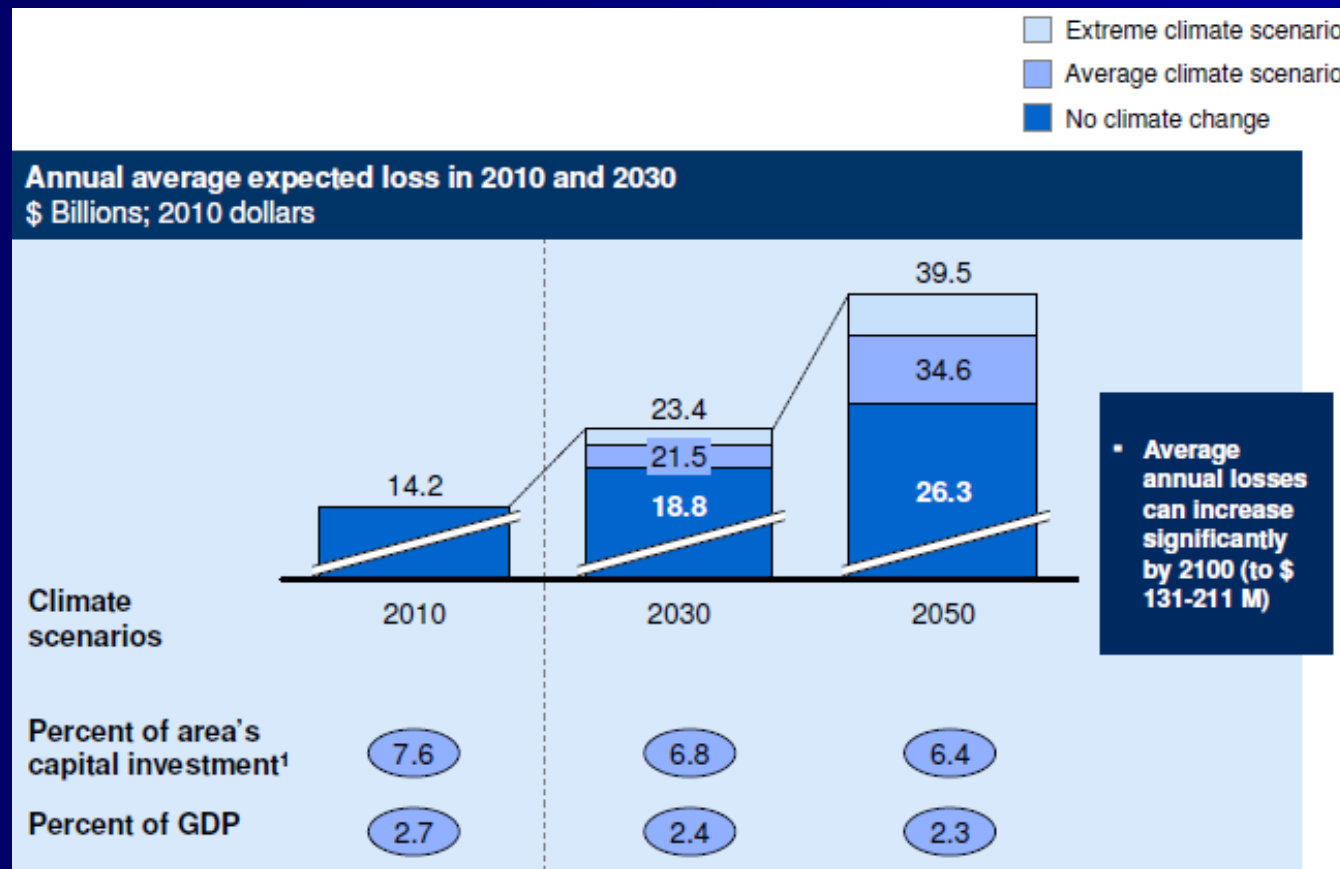
Jeff Williams
Director, Climate Consulting



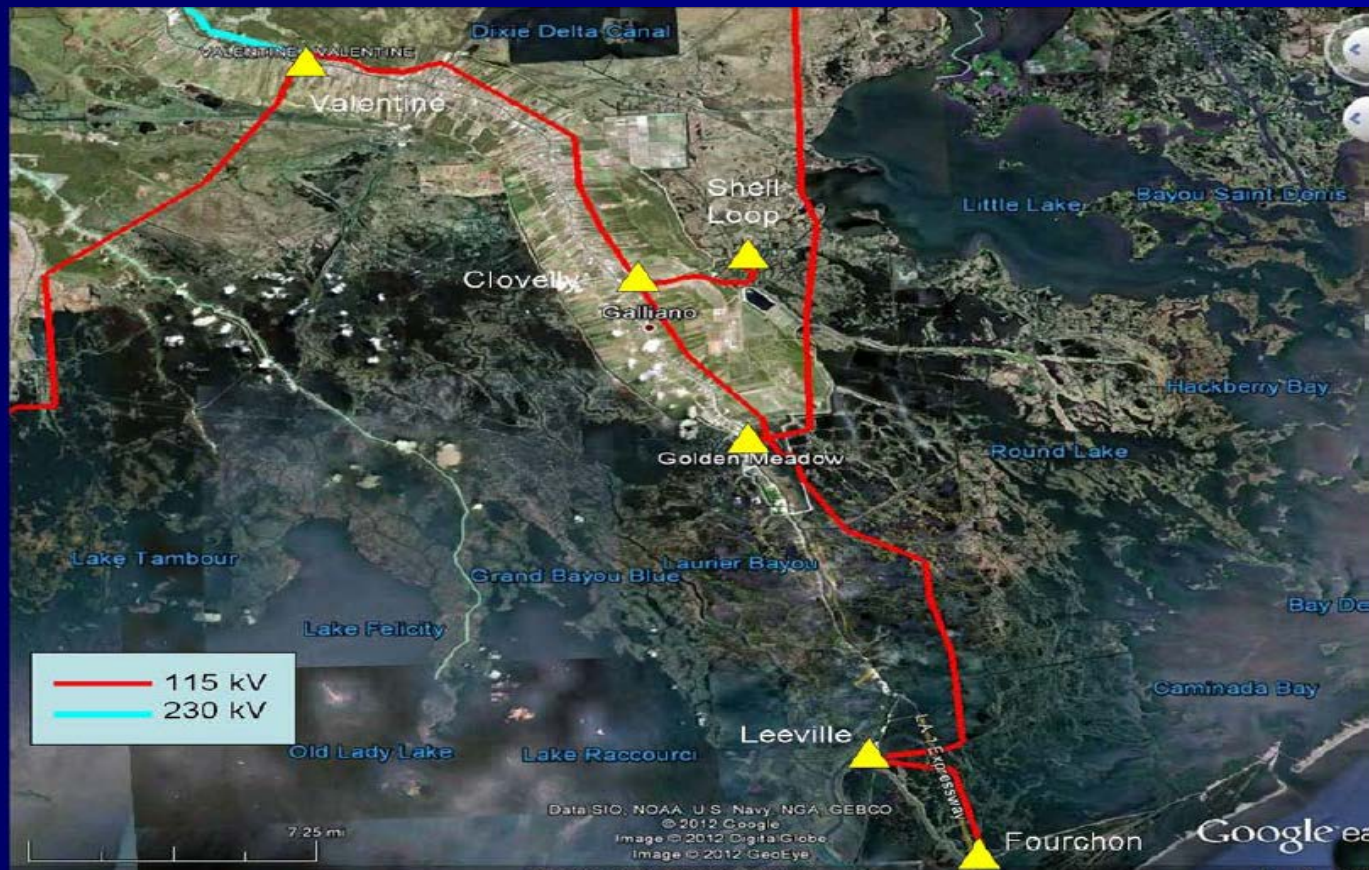




Climate change is expected to increase losses over time



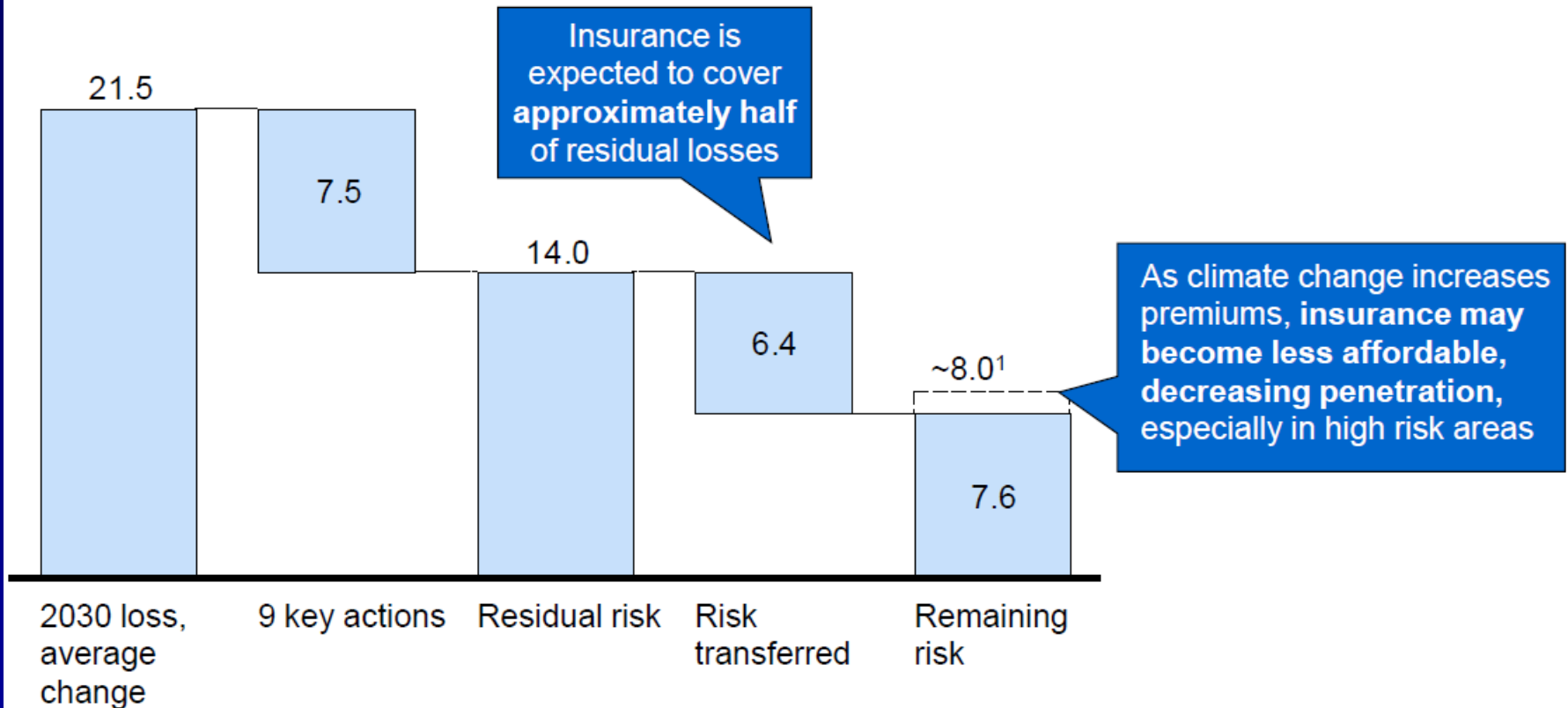
Technical Conferences showed highly cost effective resilience measures exist but require proactive investments



There is residual risk that must be addressed, a problem that maybe exacerbated by climate change

Risk profile in 2030

\$ Billions, 2010 dollars



¹ There is some uncertainty around the future extent of insurance coverage