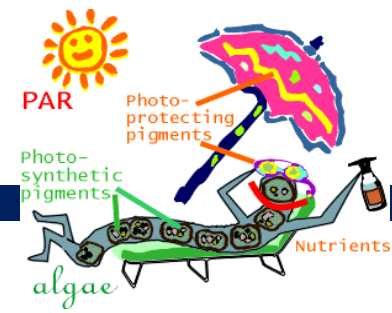


- *Position*
 - ▣ **Research Professor, Chemistry and Biochemistry - and - the Environmental Sciences Program, FAU**
- *Research Interests*
 - ▣ **Environmental Biogeochemistry, Water Quality, Global Climate Change, Environmental Restoration, Organic Geochemistry (petroleum, coal).**
- *Other: Fishing, snorkeling, boating, enjoying our 5 acres in Loxahatchee & 1/3 acre in Eleuthera. Exploring the US West*

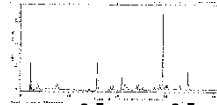


Louda—Research Projects

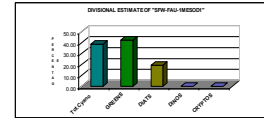


* Pigment-based chemotaxonomy

Taxon specific pigments → community estimations;
rapid, “relatively” inexpensive.



‘math’



* Sunscreen pigments ~ UVR and visible light protection of photosynthetic and electron transport mechanisms.

Scytonema sp. mats in the Greater Everglades & the Bahamas. →→

* **Nutrient pollution**, emphasizing phosphorus and nitrogen of south Florida waters (C51 canal, Lake Worth, Lake Okeechobee, Everglades, Fla. Bay)—with recent emphasis on the equestrian sourced P in Palm Beach County. (Grad. Students: B. Duersch, J. Bermudez: UG- N. Koolik)

* **Global Climate Change-emphasizing Ocean Acidification** as it affects marine and fresh water phytoplankton pigment arrays and the resultant effect on pigment-based chemotaxonomy and remote sensing. →

