



LYKES  
BROS. INC.

Mallory Lykes Dimmitt  
VP Strategic Development





LYKES BROS. INC

Family-owned integrated agri-business with cattle, citrus, forestry, land and water resources\*, recreational hunting and an insurance agency

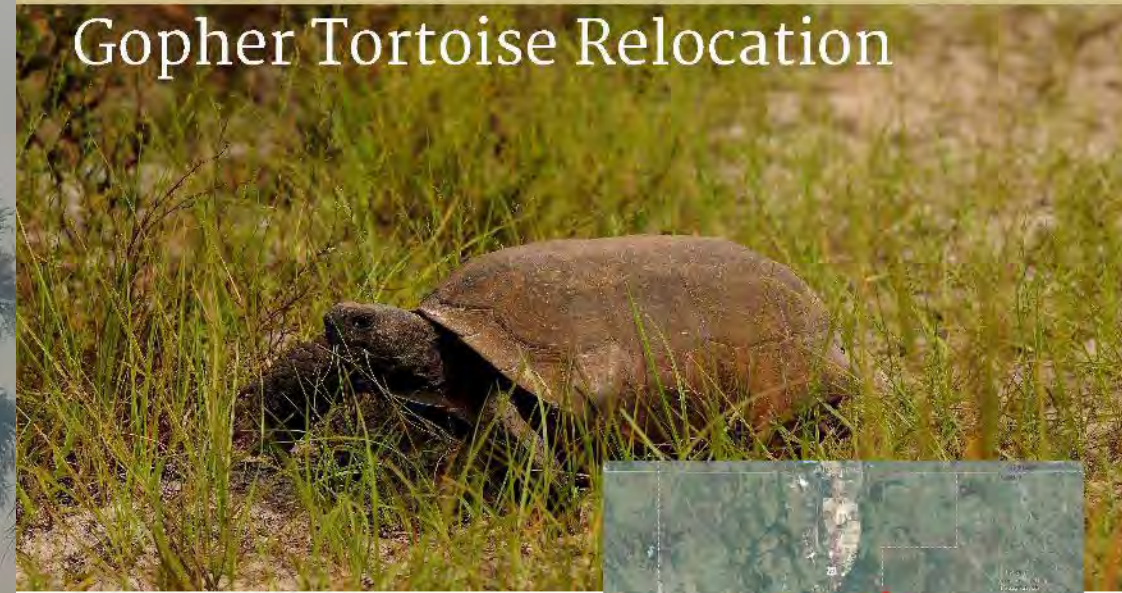




# Resource Projects: Gopher Tortoise

- Lykes Ranch has 4 permitted recipient sites

## Gopher Tortoise Relocation



Gopher tortoise by Linda McCarthy

### THE CHALLENGE

The only tortoise in the eastern part of the United States, the gopher tortoise lives in dry, sandy uplands, scrub, pine flatwoods and coastal dunes of the southeastern part of the country. The gopher tortoise has been deemed "warranted but precluded" for listing under the federal Endangered Species Act, and is listed as a Threatened Species in the state of Florida. In 2007, the Florida Fish and Wildlife Conservation Commission (FWC) implemented a rule eliminating the "take" of gopher tortoises. Gopher tortoises in the path of development must now be relocated to a permitted recipient site.

### THE SETTING

Lykes Bros. Inc. first established a recipient site in 2010 to accommodate tortoises on a



1,165 acre parcel of the Lykes Ranch known as NW Hackletrap, which has since been expanded by 5,950 acres with the addition of the Guinea Ford, West Grasshopper and Squirrel Island sites. Each of the recipient sites are located on private property within the boundaries of the Fishcating Creek conservation easement on the Lykes Ranch, west of Lake Okeechobee. The additional restrictions and long term maintenance requirements of gopher tortoise recipient sites are consistent with the conservation easement and enhance the property and habitat.



# Resource Projects: Water

Lykes Ranch is ideally located to capture and store nutrient rich waters in the Indian Prairie / Lake Istokpoga basin upstream of Lake O, benefitting the lake, Everglades, and estuaries

## Lykes Land & Water Resources Projects

### West Waterhole



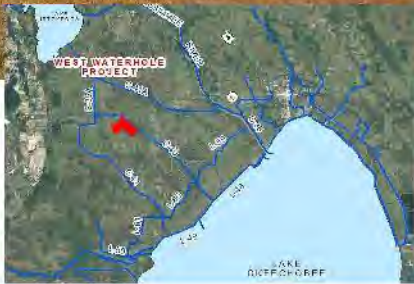
West Waterhole by Linda McCarthy

#### THE CHALLENGE

The phosphorus concentration in Lake Okeechobee has doubled since the 1970s and the total inflow of phosphorus is four times the regulatory target load set by the Florida Department of Environmental Protection. A Basin Management Action Plan (BMAP) has been adopted for Lake Okeechobee with the goal of reducing the average inflow of phosphorus in surface water from 420 to 105 metric tons a year.

#### THE SETTING

The Indian Prairie/Lake Istokpoga sub watershed was identified as one of the largest contributors of phosphorus to the Lake with 20% of the 420 metric tons coming from this basin. The West Waterhole (WWH) Project was initiated in 2006 as part of the Florida Ranchlands Environmental Services Project (FRESP) to remove excess nutrients from the water in the Indian Prairie Canal (IPC) before it enters Lake Okeechobee.



#### THE PROJECT

The Project encompasses approximately 2,500 acres located in the Indian Prairie Basin, south of SR 70 and west of the Lykes Ranch headquarters at Brighton. IPC water is pumped into the project at the northeastern edge and runs south through the site before being returned, post-treatment to the canal further downstream.

#### THE BENEFITS

The goal of the project is to remove phosphorus from (off-ranch) water in the C-40 Canal. Although the FRESP

## Lykes Land & Water Resources Projects

### Nicodemus Slough



Nicodemus Slough by Carlton Ward Jr.

#### THE CHALLENGE

When water levels are high, additional storage is needed to hold excess surface water on private and public lands in the greater Everglades system. Dispersed water storage projects are needed to help reduce the amount of water delivered into Lake Okeechobee during the wet season and discharged to coastal estuaries for flood control. Nearly one million acre-feet of water storage is needed upstream of Lake Okeechobee.

#### THE SETTING

The Nicodemus Slough project encompasses 15,859 acres of eastern Glades County in central south Florida. The slough is located immediately west of Lake Okeechobee and about six miles northwest of Moore Haven. Fisheating Creek meanders along the northern project boundary but



remains separated from the project by a series of dikes and canals.

#### THE PROJECT

The Nicodemus Slough project began operating in late 2014. When Lake Okeechobee levels are high, water is pumped from the lake's rim canal west to the highest of the project site. The water then moves in a sheetflow east across the site through a series of basins. Nicodemus Slough is capable of providing up to 34,000 acre-feet or 11 billion gallons of water.

## Lykes Land & Water Resources Projects

### Brighton Valley



Cattle graze at Brighton by Linda McCarthy

#### THE CHALLENGE

Elevated nutrient levels are a serious problem plaguing Lake Okeechobee that affect natural and human communities downstream, including coastal areas, when water is released from the lake. A Basin Management Action Plan (BMAP) for Lake Okeechobee has been adopted in accordance with the federal Clean Water Act, with a target of reducing the average inflow of phosphorus to the lake from 448 to 105 metric tons per year. The BMAP is the product of years of inter-agency work as well as public input, and multiple innovative solutions are needed to meet this hurdle.

#### THE SETTING

The Indian Prairie/Lake Istokpoga sub watershed was identified as the largest contributor of phosphorus to Lake



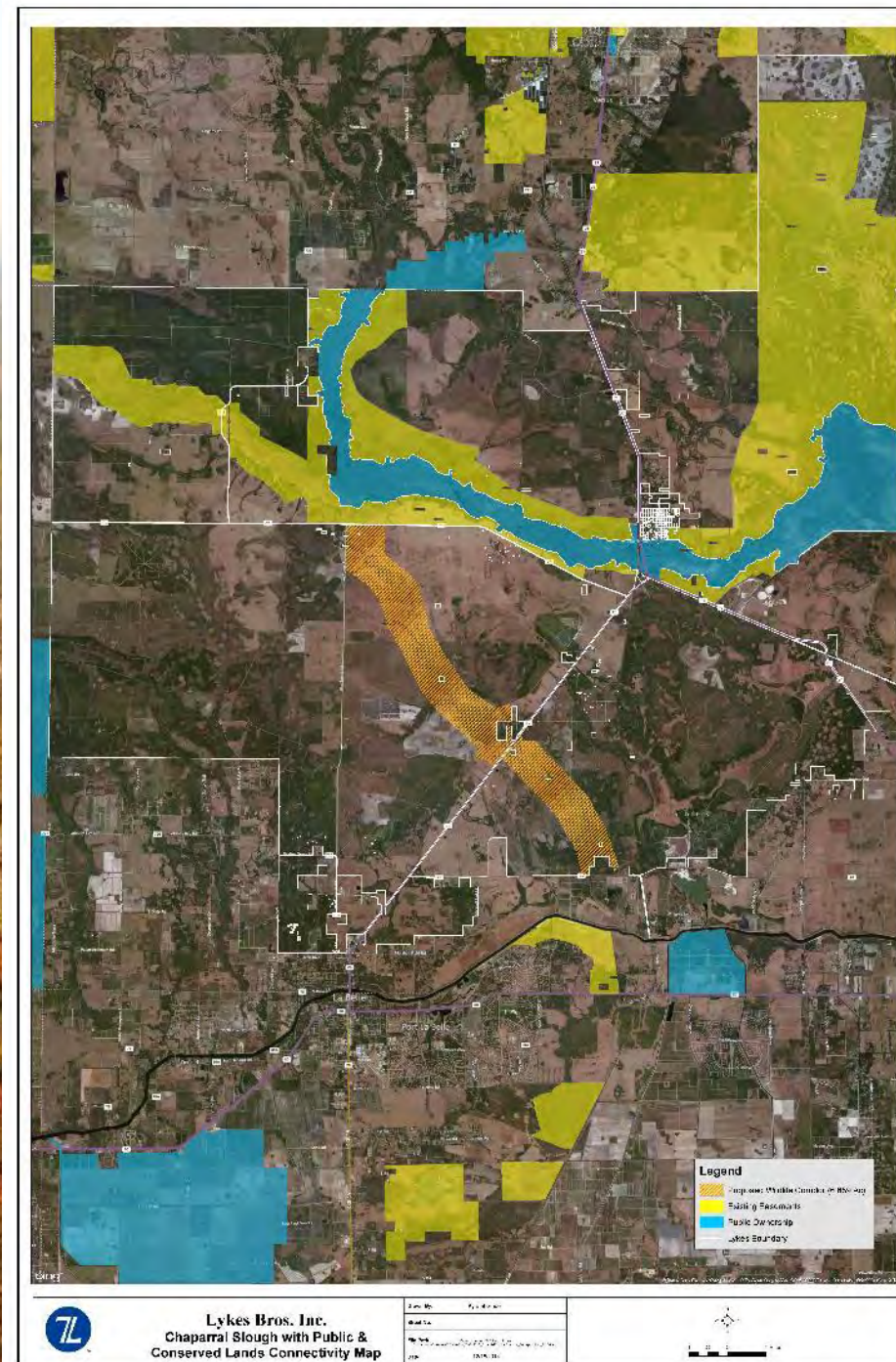
Okeechobee with 20% of the phosphorus load coming from this basin. Brighton Valley is by far the largest and most significant, quick and economical project to initiate and operate to help achieve the given nutrient reduction target.

#### THE PROJECT

Brighton Valley is a large-scale (8,200 acres) stormwater storage and treatment project designed for its unique and desirable location that can both capture significant nutrients and help manage Lake Okeechobee levels and regulatory releases. Accordingly, Brighton Valley is a BMAP priority project. Construction of the project is scheduled to begin in 2016.



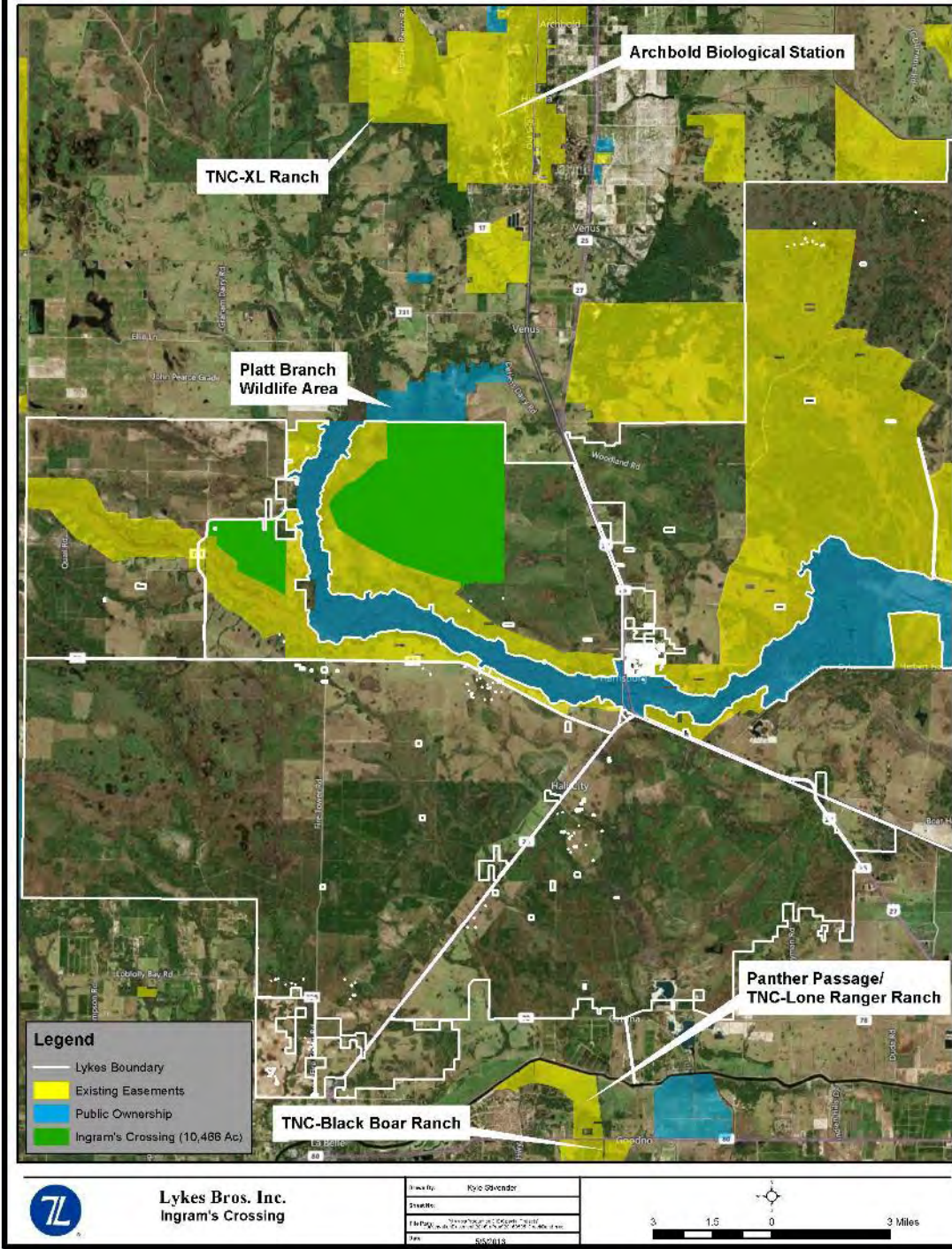
# Resource Projects: Conservation Easements





# Proposed CE: Ingram's Crossing

10,466 acre project on Rural and Family Lands Tier 1





Lykes Bros. Inc: [www.lykes.com](http://www.lykes.com)

Instagram: @lykesbros

Facebook: Lykes Bros Inc

LinkedIn: Lykes Bros Inc

Lykes Ranch: [www.lykesranch.com](http://www.lykesranch.com)

Facebook: Lykes Ranch (Silver Lake Preserve)

