



PUBLIC LAND ACQUISITION &  
MANAGEMENT PARTNERSHIP



**ONEFLORIDA**

OCTOBER 2018 • SARASOTA

**DATA DRIVEN DECISIONS FOR CONSERVATION PLANNING**





**Byron Ward**

Chief, Bureau of State Owned Lands Inventory  
Department of Environmental Protection

**Jon Oetting**

Conservation Planner  
FNAI



**Tom Hctor**

Research Associate Professor  
University of Florida



**Mark Barrett**

Associate Research Scientist  
Florida Fish and Wildlife Conservation Commission



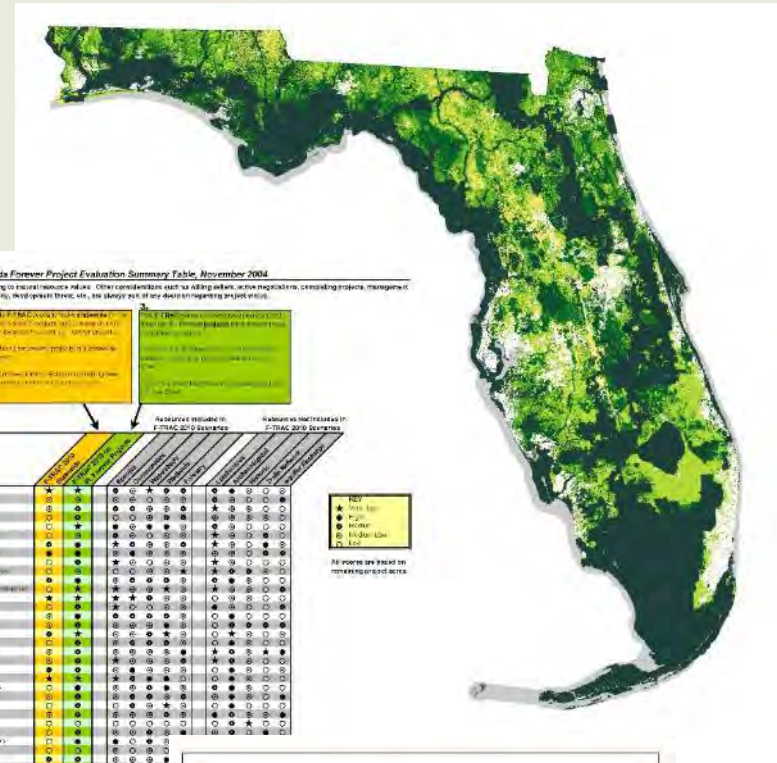


# Stateside Conservation Planning in Florida

Public Land Acquisition  
and Management  
Conference  
October 2018



**UF** UNIVERSITY of  
**FLORIDA**



**Florida Forever Project Evaluation Summary Table, November 2004**

NOTE: This table evaluates projects ONLY according to natural resource values. Other considerations such as adding value, active restoration, controlling projects, management, housing, wildlife, forest, etc., are also part of the decision-making project value.

There are four categories of land acquisition: 1. Land to be acquired by the FL Forever program. 2. Land to be acquired by the FL Forever program, but not yet acquired. 3. Land to be acquired by the FL Forever program, but not yet acquired. 4. Land to be acquired by the FL Forever program, but not yet acquired.

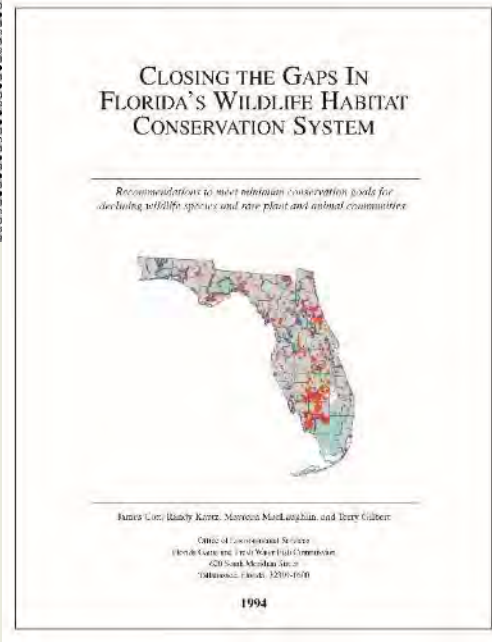
FL Forever project evaluation criteria: 1. Project location and size. 2. Project type and value. 3. Project management and monitoring. 4. Project impact and benefit. 5. Project cost and funding. 6. Project risk and uncertainty. 7. Project sustainability and legacy. 8. Project community and stakeholder involvement. 9. Project communication and outreach. 10. Project evaluation and reporting.

**CURRENT GROUP A PROJECTS**

Ranking	Project	Acres	Project Name	Project Type	Project Value	Project Management	Project Monitoring	Project Impact	Project Benefit	Project Cost	Project Funding	Project Risk	Project Uncertainty	Project Sustainability	Project Legacy	Project Community	Project Stakeholder	Project Communication	Project Outreach	Project Evaluation	Project Reporting
1	100	100	100	100	100	100	100	100	100	100	100	100	100	100	100	100	100	100	100	100	100
2	200	200	200	200	200	200	200	200	200	200	200	200	200	200	200	200	200	200	200	200	200
3	300	300	300	300	300	300	300	300	300	300	300	300	300	300	300	300	300	300	300	300	300
4	400	400	400	400	400	400	400	400	400	400	400	400	400	400	400	400	400	400	400	400	400
5	500	500	500	500	500	500	500	500	500	500	500	500	500	500	500	500	500	500	500	500	500
6	600	600	600	600	600	600	600	600	600	600	600	600	600	600	600	600	600	600	600	600	600
7	700	700	700	700	700	700	700	700	700	700	700	700	700	700	700	700	700	700	700	700	700
8	800	800	800	800	800	800	800	800	800	800	800	800	800	800	800	800	800	800	800	800	800
9	900	900	900	900	900	900	900	900	900	900	900	900	900	900	900	900	900	900	900	900	900
10	1000	1000	1000	1000	1000	1000	1000	1000	1000	1000	1000	1000	1000	1000	1000	1000	1000	1000	1000	1000	1000

Legend: 100, 200, 300, 400, 500, 600, 700, 800, 900, 1000

All projects are based on natural resource values.





# *Statewide Conservation Planning*



- Florida is a leader!
- 1994 – FWC Closing the Gaps report
- 1999 – UF/OGT Greenways Network
- 2000 – FL Forever Conservation Needs Assessment v1.0
- 2008 – Critical Lands & Waters Identification Project v1.0
- Today – Species Distribution Modeling, Longleaf Database  
and more...



# *Statewide Conservation Planning*



- Tremendous tools for decision support
- Excellent screening and evaluation tools
- Not the final answer – experts still decide
- Can be customized for project/location needs
- **There's still work to be done...**



# Florida Forever Conservation Needs Assessment Overview

Public Land Acquisition  
and Management  
Conference  
October 2018





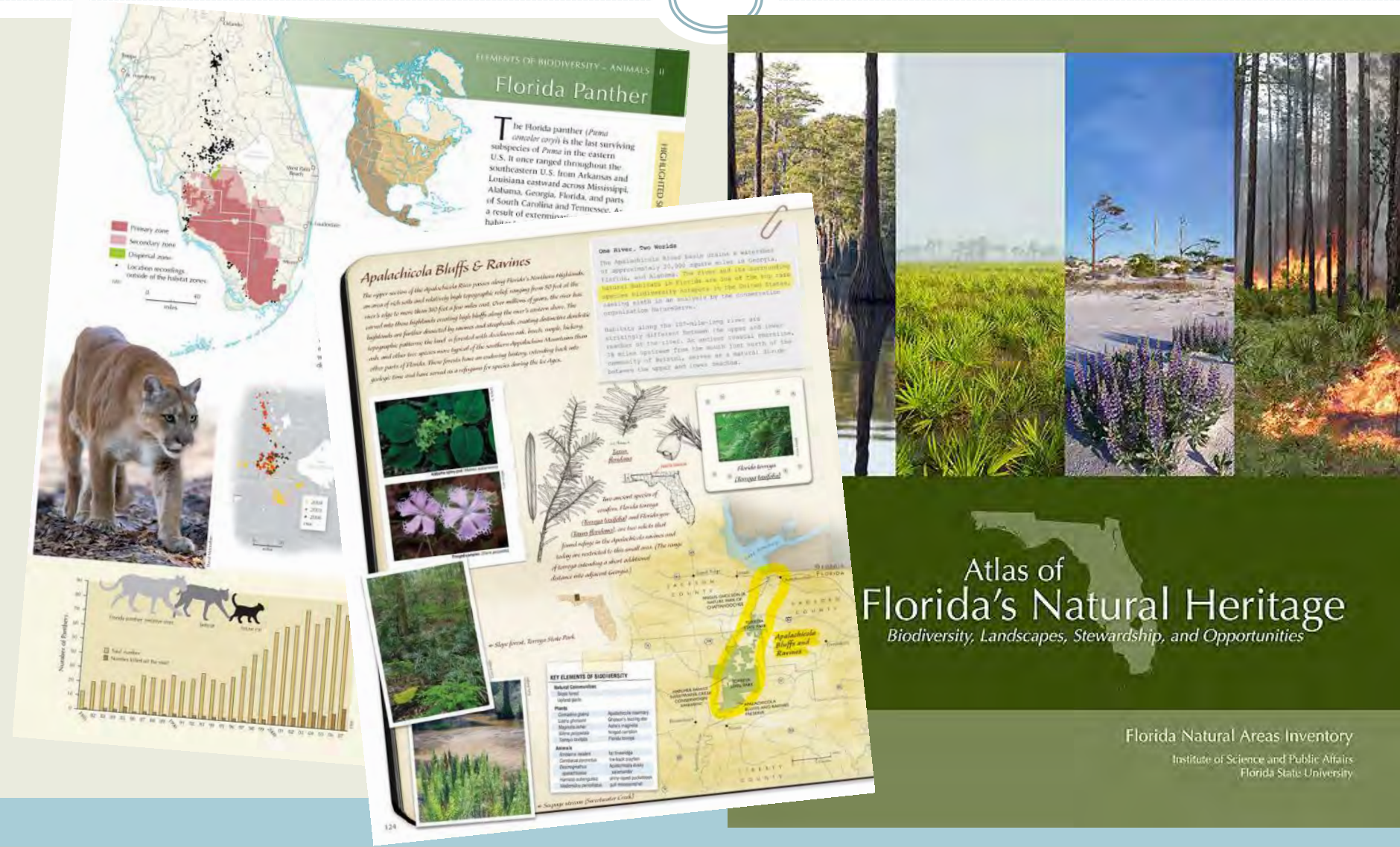
# ***Florida Natural Areas Inventory***



- **Florida's Natural Heritage Program**
- We track status and locations for more than 1100 species
- Field surveys for species inventory and natural community mapping
- Conservation Planning
- Our work informs land acquisition and land management statewide



# Florida Natural Areas Inventory







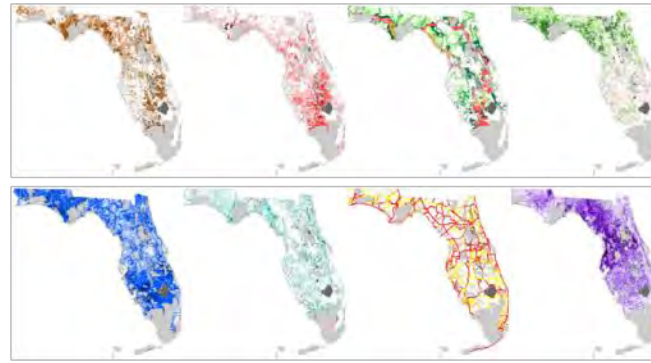
# Florida Forever Act



- Program should be implemented in the context of *measurable goals and objectives*.
- Acquisition should be based on a *comprehensive assessment of Florida's natural resources*
- A competitive selection process to select projects *best able to meet the goals* of FL Forever and *maximize efficient use of program's funding*
- Acquisition should provide *multiple benefits*



# Florida Forever Conservation Needs Assessment

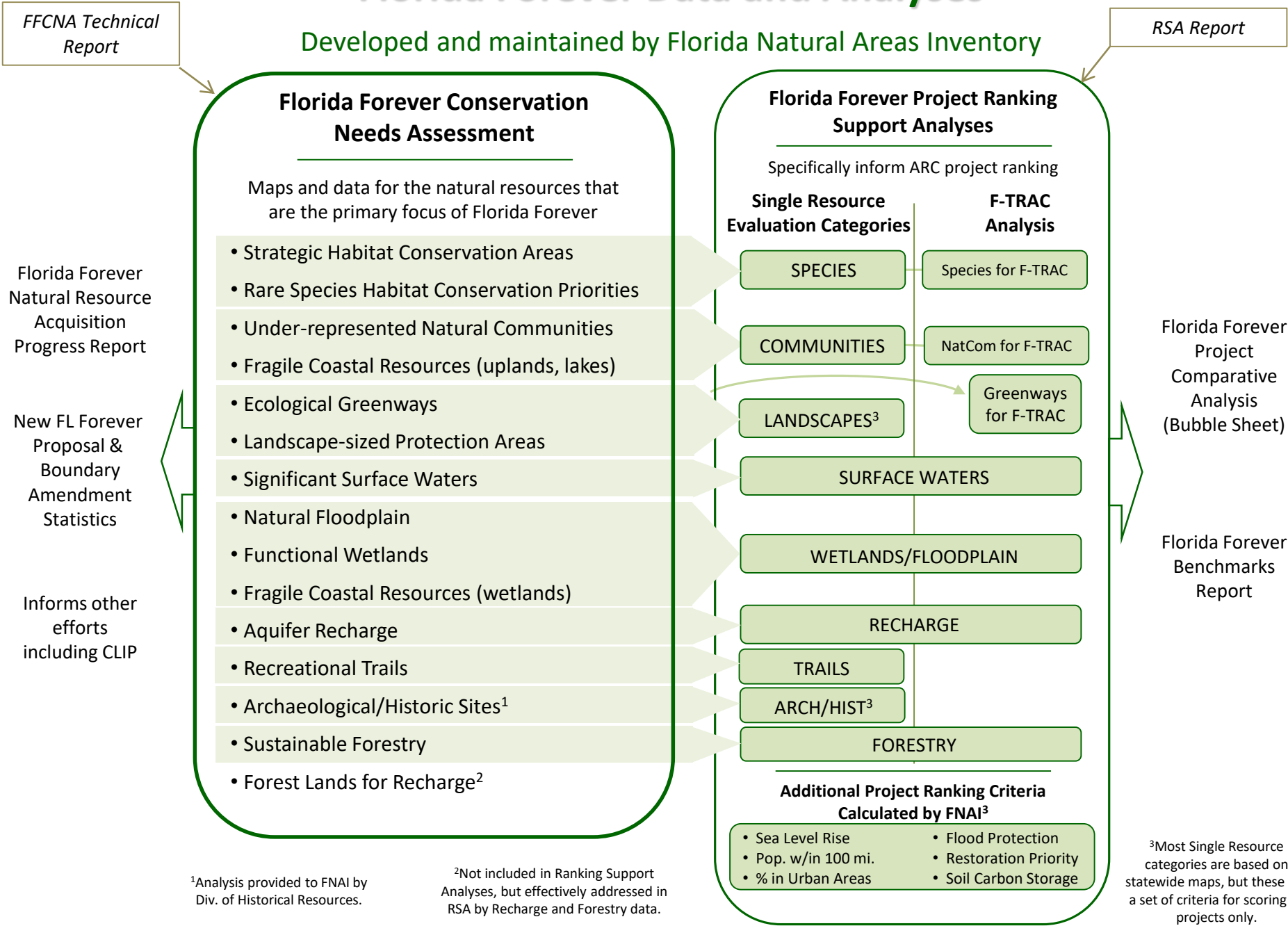


- GIS Data layers for 13 resource types
- Tied to goals and measures of Florida Forever
- Collaborative effort
- Informs land acquisition and other conservation planning;
- Provides accountability
- All data are statewide and prioritized

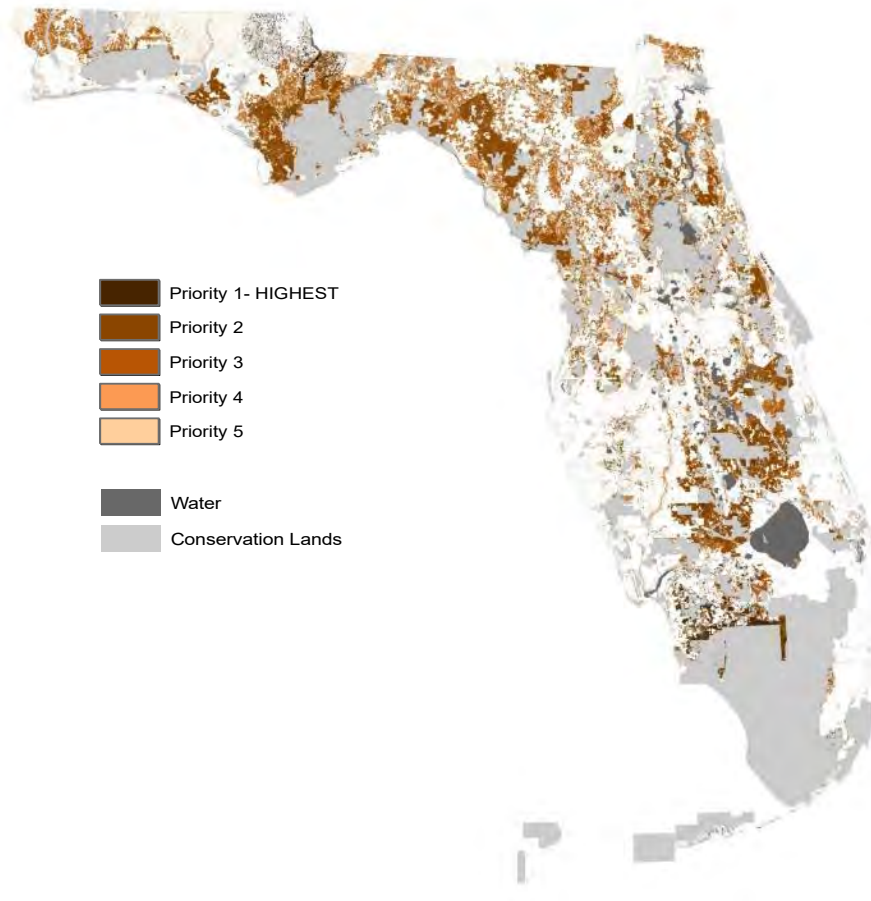


# Florida Forever Data and Analyses

Developed and maintained by Florida Natural Areas Inventory

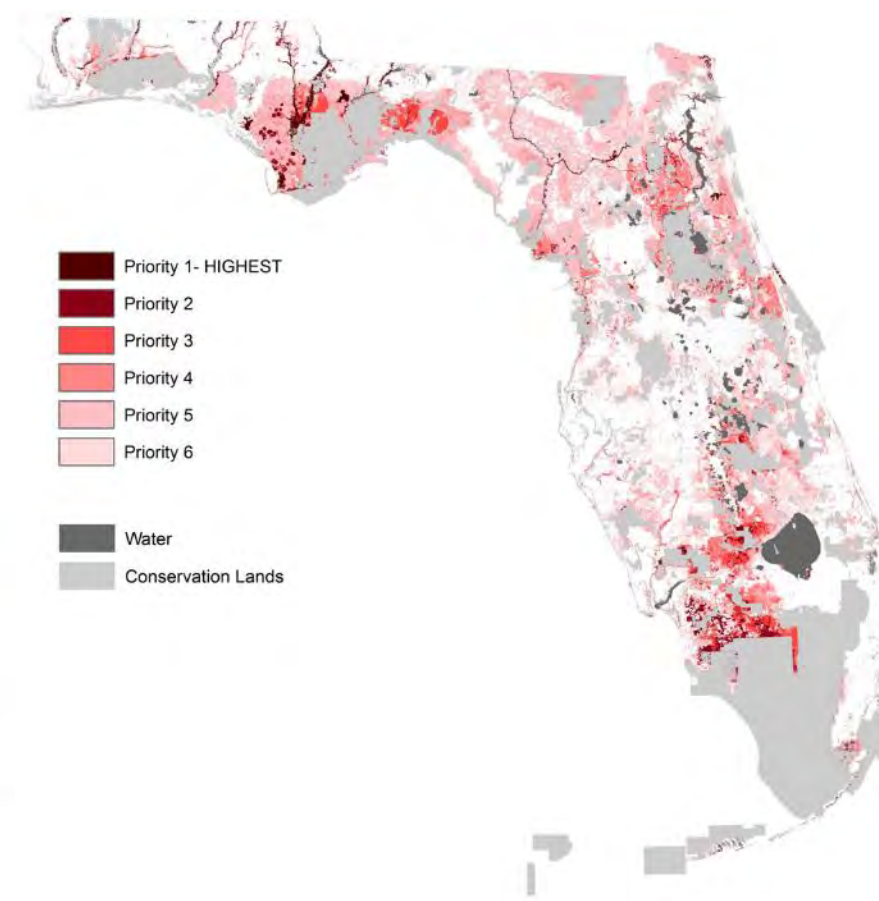






Strategic Habitat Conservation Areas

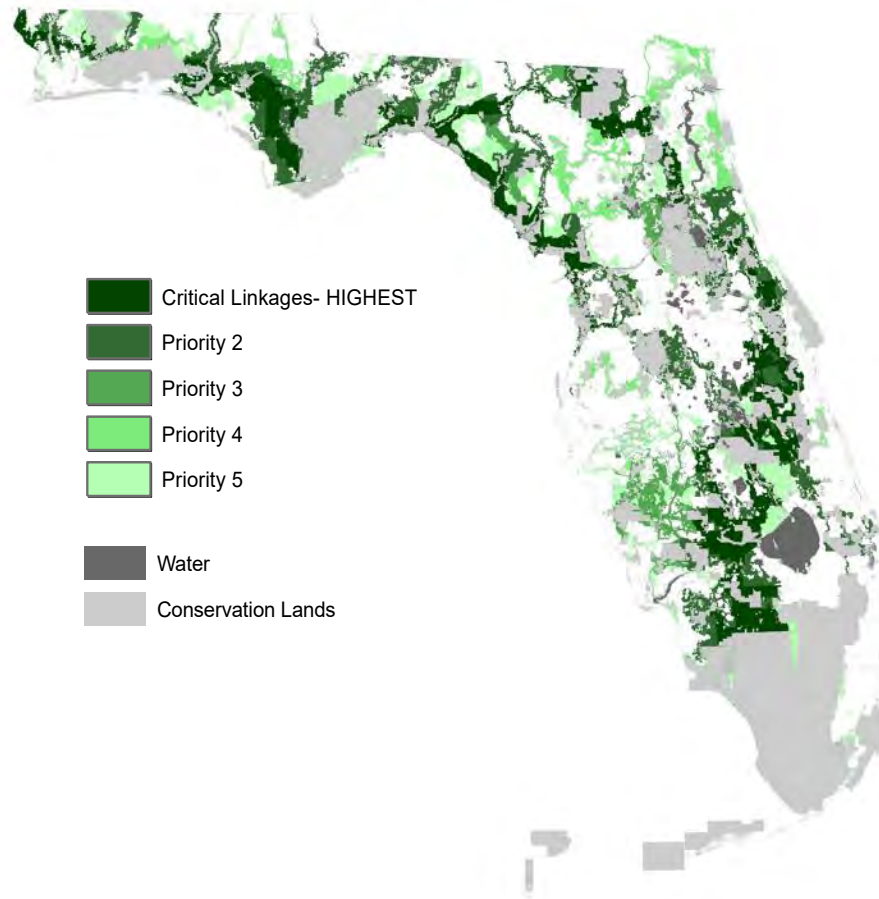
Source: FWC



Rare Species Habitat Conservation Priorities

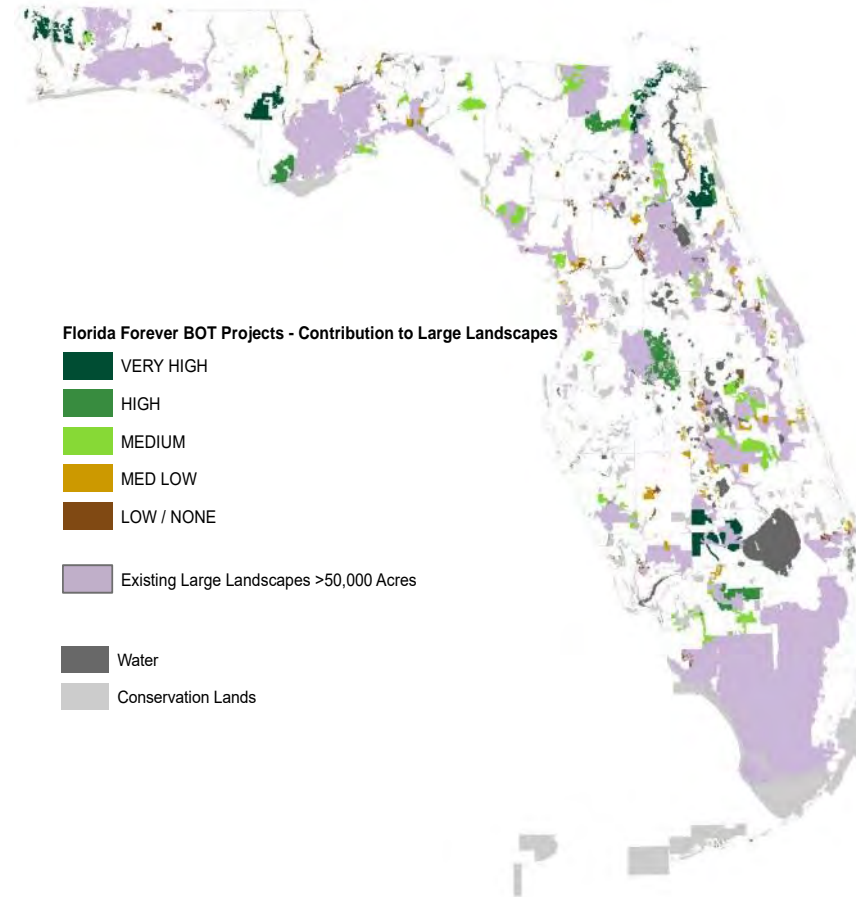
Source: FNAI





## Florida Ecological Greenways Network

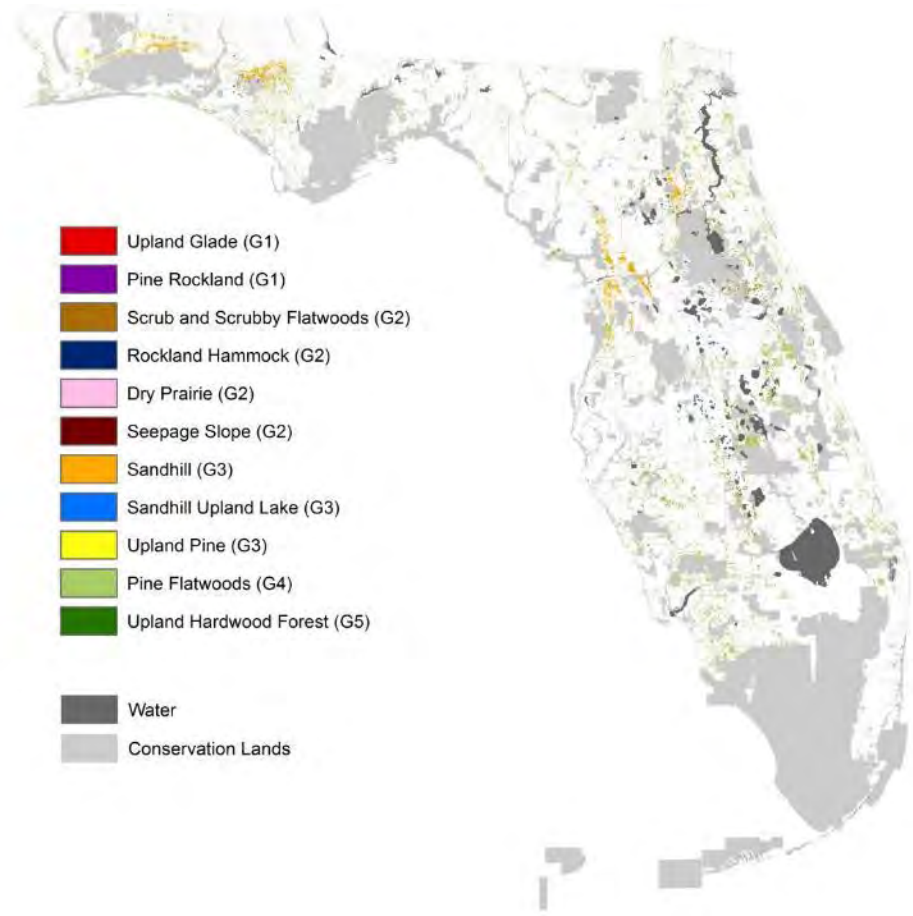
Source: Univ. of Florida and DEP/Office of Greenways and Trails



## Rare Species Habitat Conservation Priorities

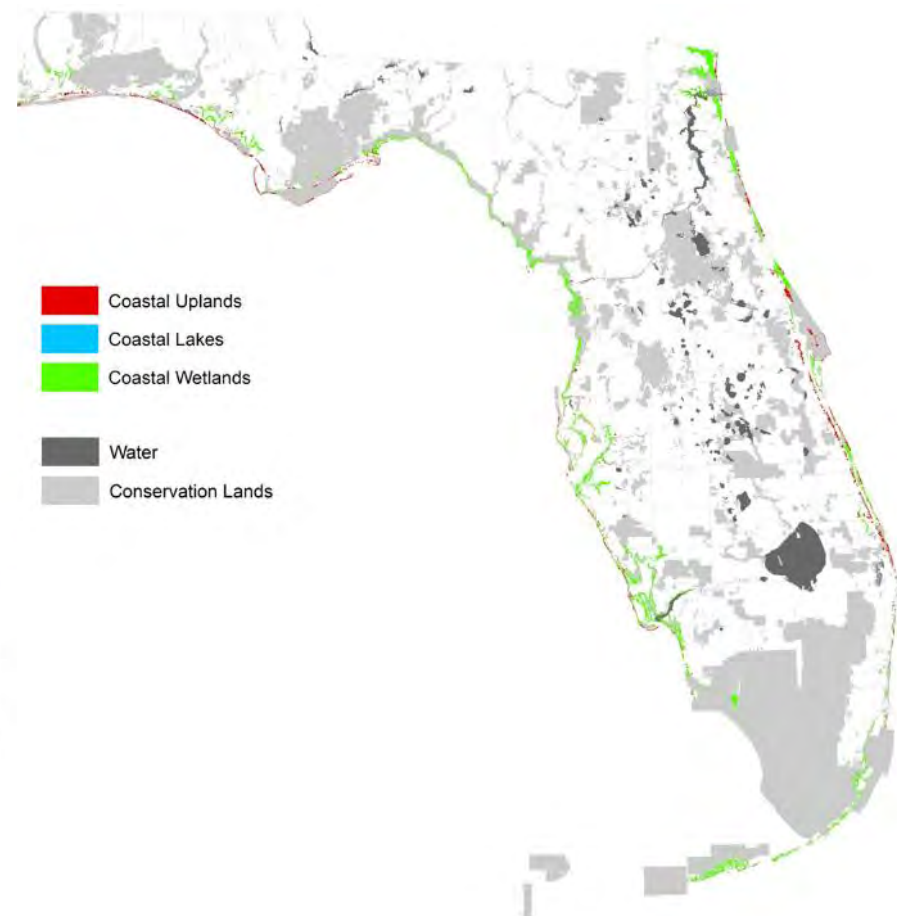
Source: FNAI





Under-Represented Natural Communities

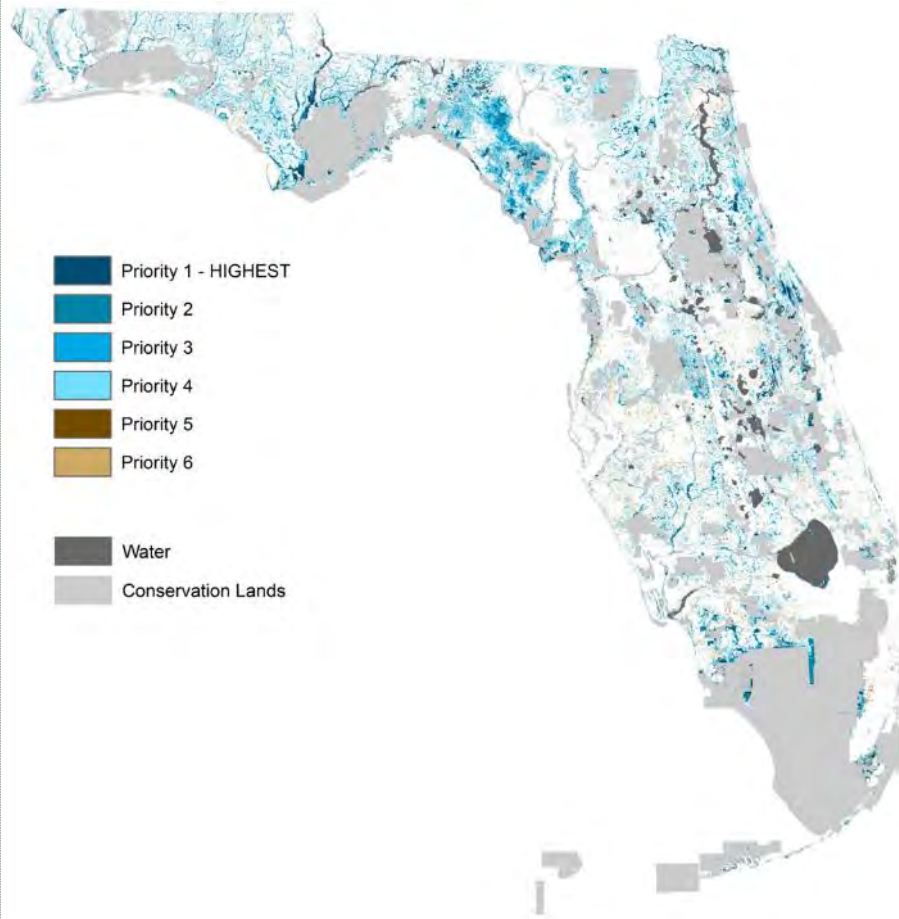
Source: FNAI



Fragile Coastal Resources

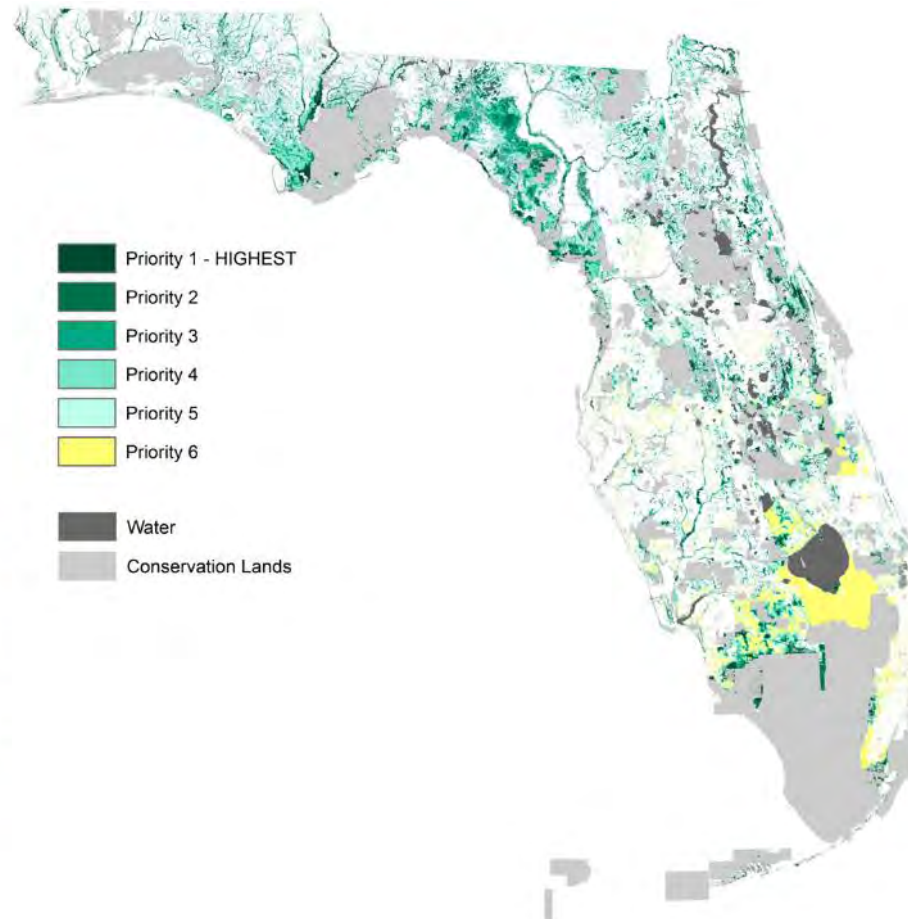
Source: FNAI





Functional Wetlands

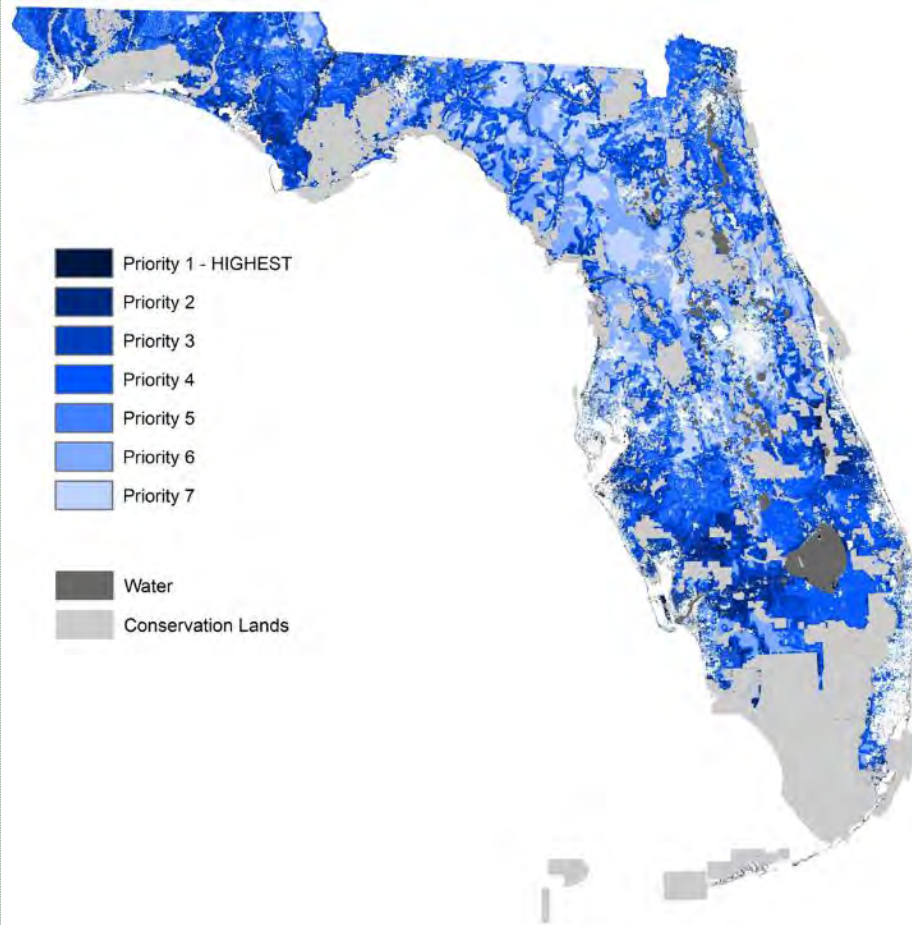
Source: FNAI



Natural Floodplain

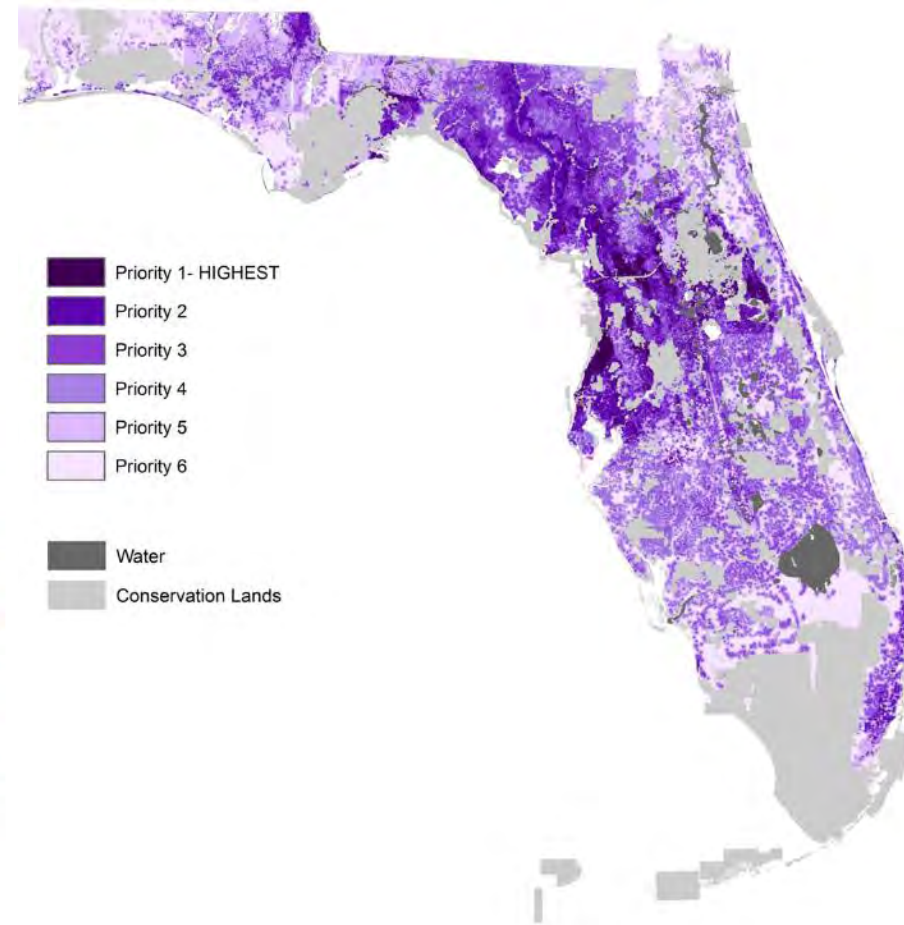
Source: FNAI, FEMA





Significant Surface Waters

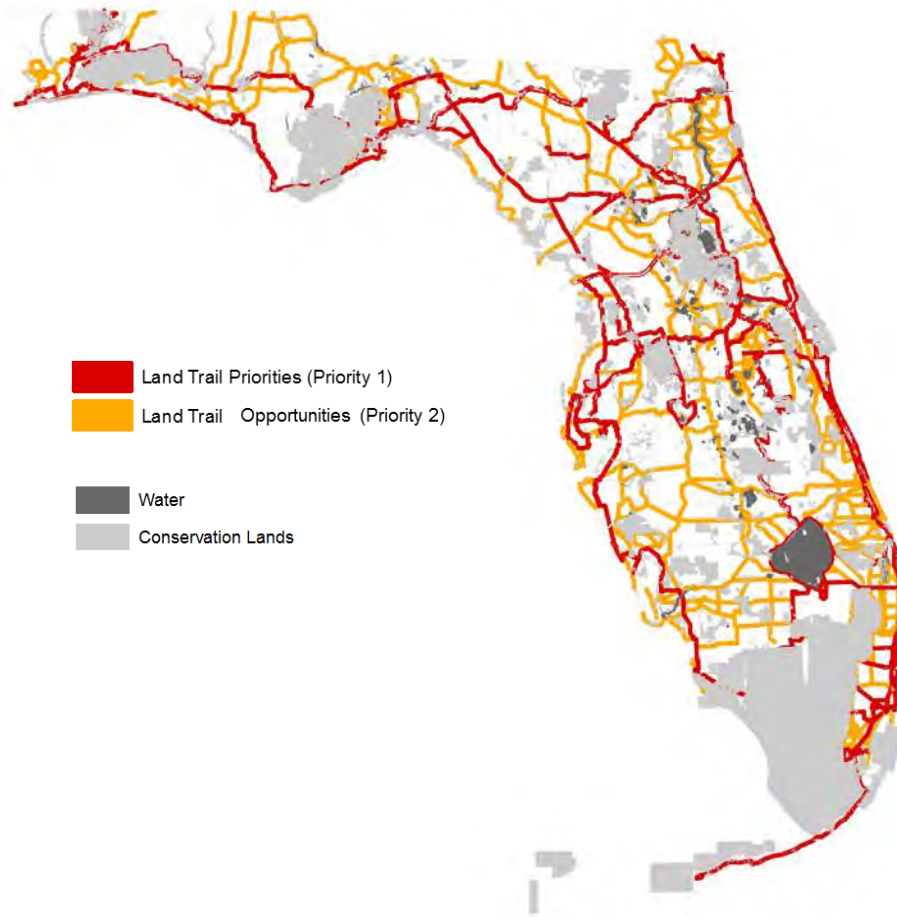
Source: FNAI



Aquifer Recharge

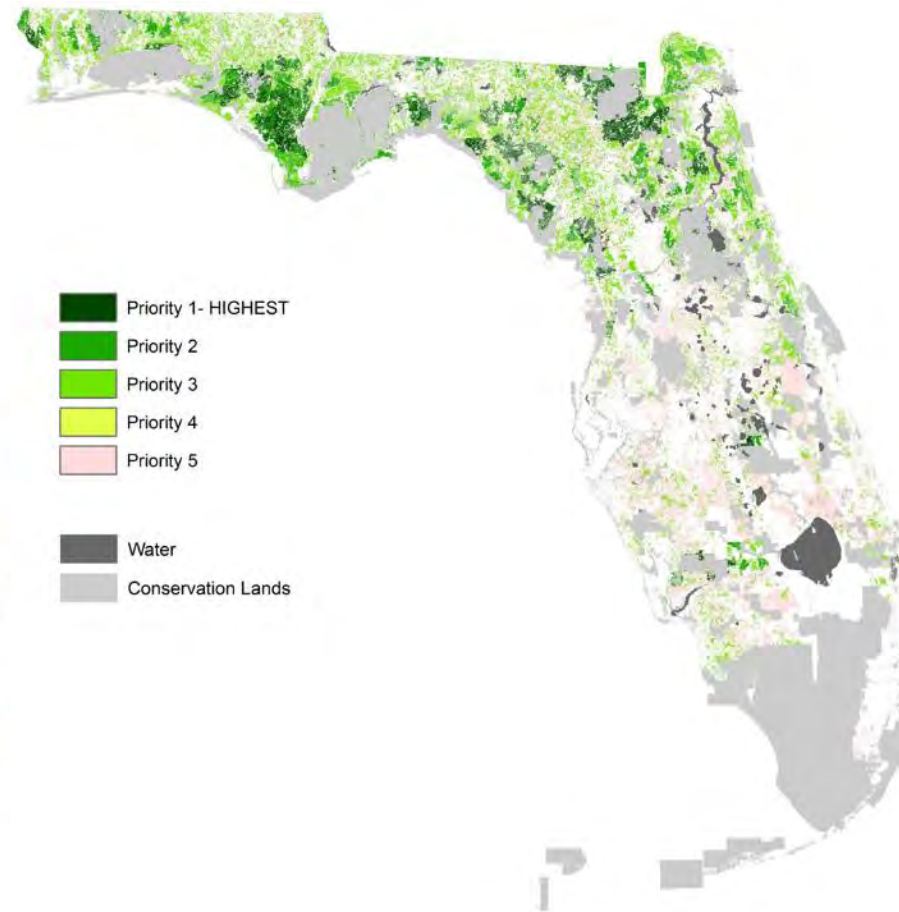
Source: Advanced Spatial Inc., FNAI





### Recreational Trail Corridors

Source: DEP/Office of Greenways and Trails



### Sustainable Forestry

Source: FNAI and Florida Forest Service



## Additional Project Ranking Criteria Calculated by FNAI

- Sea Level Rise
- Pop. w/in 100 mi.
- % in Urban Areas
- Flood Protection
- Restoration Priority
- Soil Carbon Storage

Most are straightforward overlap of project with data:

- Population within 100 mi of project based on 2010 census tracts
- **Urban areas based on ‘urban areas and urban clusters’ (FGDL)**  
*Measure h(2)- currently on bubblesheet*
- Flood protection uses same base data as natural floodplain but includes non-natural areas and is not prioritized
- Soils Carbon Storage is based on Average Soil Total Carbon statistics for each FL Forever project from S. Grunwald, UF.
- Restoration is primarily overlap with DEP Basin Management Action Plan areas; additional consideration for restoration intent of project



# Evaluation Methods

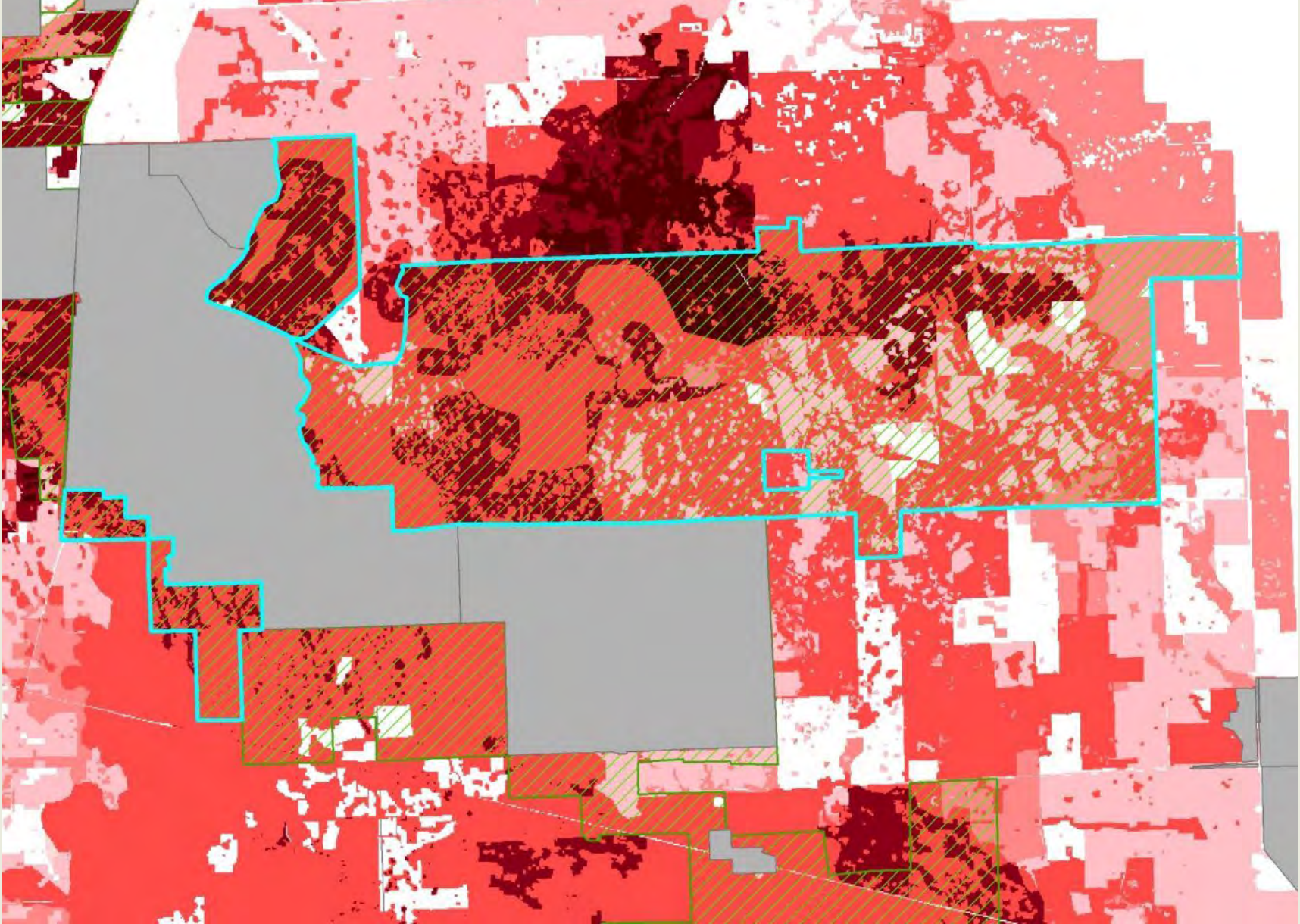


## Single Resource Evaluation

F-TRAC (Florida Forever Tool for Efficient Resource Acquisition and Conservation)



FNAIHAB	Priority 1	Priority 2	Priority 3	Priority 4	Priority 5	Priority 6
Acres in Project	315	2,912	6,741	446	198	8





# Florida Forever Measures Table for New Proposals

## Bluffs of St. Teresa: Florida Forever Measures Evaluation 20160831

ACRES = 17,018

MEASURES	Acres <sup>a</sup>	% of project
<b>B1: Strategic Habitat Conservation Areas</b>		
Priority 1	0	0%
Priority 2	777	5%
Priority 3	10,263	60%
Priority 4	1	< 1%
Priority 5	445	3%
Total Acres	11,486	67%
<b>B2: FNAI Habitat Conservation Priorities</b>		
Priority 1	0	0%
Priority 2	0	0%
Priority 3	0	0%
Priority 4	2,421	14%
Priority 5	14,028	82%
Priority 6	51	< 1%
Total Acres	16,500	97%
<b>B3: Ecological Greenways</b>		
Priority 1	0	0%
Priority 2	0	0%
Priority 3	0	0%
Priority 4	0	0%
Priority 5	0	0%
Priority 6	16,951	100%
Total Acres	16,951	100%
<b>B4: Under-represented Natural Communities</b>		
Upland Glade (G1)	0	0%
Pine Rockland (G1)	0	0%
Scrub and Scrubby Flatwoods (G2)	346	2%
Rockland Hammock (G2)	0	0%
Dry Prairie (G2)	0	0%
Seepage Slope (G2)	0	0%
Sandhill (G3)	0	0%
Sandhill Upland Lake (G3)	0	0%
Upland Pine (G3)	0	0%
Mesic/Wet Flatwoods (G4)	677	4%
Upland Hardwood Forest (G5)	0	0%
Total Acres	1,023	6%
<b>B6: Listed Species Occurrences</b>		
G1	0	
G2	11	
G3	5	
G4	0	
G5	4	
Total	20	
<b>C4: Natural Floodplain Function</b>		
Priority 1	199	1%
Priority 2	1,758	10%

MEASURES (continued)	Acres <sup>a</sup>	% of project
<b>C5: Surface Water Protection</b>		
Priority 1	5,281	31%
Priority 2	44	< 1%
Priority 3	5	< 1%
Priority 4	8,916	52%
Priority 5	16	< 1%
Priority 6	1,867	11%
Priority 7	0	0%
Total Acres	16,130	95%
<b>C7: Fragile Coastal Resources</b>		
Fragile Coastal Uplands	0	0%
Imperiled Coastal Lakes	0	0%
Coastal Wetlands	840	5%
Total Acres	840	5%
<b>C8: Functional Wetlands</b>		
Priority 1	176	1%
Priority 2	1,636	10%
Priority 3	1,560	9%
Priority 4	1,281	8%
Priority 5	0	0%
Priority 6	0	0%
Total Acres	4,652	27%
<b>D3: Aquifer Recharge</b>		
Priority 1	4,914	29%
Priority 2	4,409	26%
Priority 3	1,648	10%
Priority 4	778	5%
Priority 5	998	6%
Priority 6	14	< 1%
Total Acres	12,761	75%
<b>E2: Recreational Trails (miles)</b>		
(prioritized trail opportunities from Office of Greenways and Trails & Univ. Florida)		
Land Trail Priorities	13.8	
Land Trail Opportunities	0.0	
Total Miles	13.8	
<b>F2: Arch. &amp; Historical Sites (number)</b>		
	19 sites	
<b>G1: Sustainable Forestry</b>		
Priority 1	0	0%
Priority 2	10,414	61%
Priority 3	1,970	12%
Priority 4	0	0%
Priority 5 - Potential Pinelands	44	< 1%
Total Acres	12,428	73%
<b>G3: Forestland for Recharge</b>		
	9,629	57%



Category*	Remaining Project Acres	Percent Complete	Project Name	F-TRAC 2020 Statewide	F-TRAC 2020 FL Forever	Species	Communities	Surface Waters	Wetlands & Floodplain	Forestry	Aquifer Recharge	Landscapes	Archaeological	Historic	Trails Network	FL Natl Scenic Trail Corridor	Population w/in 100 mi	Climate Change Sea Level Rise
CNL	10,986	42%	Apalachicola River	●	○	★	○	★	○	○	○	○	●	○	○	○	○	○
CNL	100,425	0%	Bear Creek Forest	○	○	○	○	○	★	○	★	○	○	○	○	○	○	○
CNL	4,680	0%	Bear Hammock	○	○	○	○	○	○	★	○	○	○	○	○	○	○	○
CNL	7,148	74%	Belle Meade	○	○	★	○	○	○	○	○	○	○	○	○	○	○	○
CNL	43,051	0%	Blue Head Ranch	★	○	○	○	○	○	○	★	○	○	○	○	○	★	○
CNL	31,863	31%	Bombing Range Ridge	★	○	○	○	○	○	○	★	○	○	○	○	x	★	○
CNL	10,704	42%	Caloosahatchee Ecoscape	○	○	○	○	○	○	○	○	○	○	○	○	○	○	○
CNL	32,440	5%	Camp Blanding to Raiford Greenway	○	○	○	○	○	○	○	★	○	○	○	○	○	○	○
CNL	71,339	14%	Devil's Garden	○	○	○	○	○	○	○	○	○	○	○	○	x	○	○
CNL	59,274	35%	Etoniah/Cross Florida Greenway	○	○	○	○	○	○	○	★	○	○	○	○	x	○	○
CNL	11,182	0%	Half Circle L Ranch	○	★	○	○	○	○	○	○	○	○	○	○	○	○	○
CNL	22,399	8%	Hixtown Swamp	○	○	○	○	○	○	○	○	○	○	○	○	○	○	○
CNL	1,886	32%	Ichetucknee Trace	○	○	○	○	○	○	○	○	○	○	○	○	○	○	○
CNL	5,413	1%	Lake Hatchineha Watershed	○	○	○	○	○	○	○	○	○	○	○	○	○	○	○
CNL	22,518	62%	Lake Wales Ridge Ecosystem	○	○	○	○	○	○	○	○	○	○	○	○	○	○	○
CNL	9,610	57%	Longleaf Pine Ecosystem	○	○	○	★	○	○	○	★	○	○	○	○	○	○	○
CNL	1,797	0%	Natural Bridge Creek	○	○	○	○	○	○	○	○	○	○	○	○	○	○	○
CNL	27,501	41%	Osceola Pine Savannas	○	○	○	○	○	○	○	★	○	○	○	○	x	○	○
CNL	39,384	39%	Panther Glades	○	○	★	○	○	○	○	○	★	○	○	○	○	○	○
CNL	2,378	65%	Perdido Pitcher Plant Prairie	○	○	○	○	○	○	○	○	○	○	○	○	○	○	○
CNL	48,973	0%	Pine Island Slough Ecosystem	○	○	○	○	○	○	○	○	○	○	○	○	○	○	○
CNL	53,806	71%	Pinhook Swamp	○	○	○	○	○	○	○	○	○	○	○	○	x	○	○
CNL	44,999	0%	San Pedro Bay	○	○	○	○	○	○	○	○	○	○	○	○	x	○	○
CNL	2,180	0%	Shoal River Buffer	○	○	○	○	○	○	○	○	○	○	○	○	○	○	○
CNL	11,652	0%	South Goethe	○	○	○	○	○	○	○	○	○	○	○	○	○	○	○
CNL	589	0%	Southeastern Bat Maternity Caves	○	○	○	○	○	○	○	○	○	○	○	○	○	○	○
CNL	7,998	0%	Triple Diamond	★	★	○	○	○	○	○	○	○	○	○	○	○	○	○
CNL	8,128	49%	Twelvemile Slough	○	○	○	○	○	○	○	○	○	○	○	○	○	○	○
CNL	12,027	0%	Upper Shoal River	○	○	○	○	○	○	○	○	○	○	○	○	○	○	○
CNL	11,022	24%	Upper St. Marks River Corridor	○	○	○	○	○	○	○	○	○	○	○	○	○	○	○
CNL	17,292	47%	Wacissa/Aucilla River Sinks	○	○	○	○	○	○	○	○	○	★	○	○	x	○	○
CNL	23,427	71%	Wekiva-Ocala Greenway	○	○	○	○	○	○	○	○	○	○	○	○	x	○	○
CNL	10,069	0%	Wolfe Creek Forest	○	○	○	○	○	○	○	○	○	○	○	○	○	○	○
CHR	853	0%	Battle of Wahoo Swamp	○	○	○	○	○	○	○	○	○	○	○	○	○	○	○
CHR	89	62%	Okeechobee Battlefield	○	○	○	○	○	○	○	○	○	○	○	○	x	○	○
CHR	558	2%	Pierce Mound Complex	○	○	○	○	○	○	○	○	○	○	○	○	○	○	○
CHR	145	30%	Pineland Site Complex	○	○	○	○	○	○	○	○	○	○	○	○	○	○	○
CHR	56	12%	Three Chimneys	○	○	○	○	○	○	○	○	○	○	○	○	○	○	○
LTF	9,506	14%	Adams Ranch	★	★	○	○	○	○	○	○	○	○	○	○	x	○	○
LTF	11,981	0%	Arbuckle Creek Watershed	○	○	○	○	○	○	○	○	○	○	○	○	○	○	○
LTF	5,903	0%	Ayavalla Plantation	○	○	○	○	○	○	○	○	○	○	○	○	○	○	○
LTF	47,741	16%	Big Bend Swamp/Holopaw Ranch	○	○	○	○	○	○	○	○	○	○	○	○	○	○	○
LTF	2,460	0%	Clay Ranch	○	○	○	○	○	○	○	○	○	○	○	○	x	○	○
LTF	99,501	0%	Coastal Headwaters Longleaf Forest	○	○	○	○	○	○	○	○	○	○	○	○	○	○	○
LTF	9,041	0%	Conlin Lake X	○	○	○	○	○	○	○	○	○	○	○	○	○	○	○

Key

5

Very High

4

High

3

Medium

2

Medium-Low

1

Low



Category*	Remaining Project Acres	Percent Complete	Project Name	F-TRAC 2020 Statewide	F-TRAC 2020 FL Forest	Species	Communities	Surface Waters	Wetlands & Floodplain	Forestry	Aquifer Recharge	Landscapes	Archaeological	Historic	Trails Network	FL Natl Scenic Trail corridor	Population within 100 mi	Climate Change Sea Level Rise
CNL	10,986	42%	Apalachicola River	4	2	5	2	5	3	2	2	3	4	2	2		1	1
CNL	100,425	0%	Bear Creek Forest	2	2	3	2	4	1	5	2	5	2	1	2		2	1
CNL	4,680	0%	Bear Hammock	1	3	3	2	2	2	4	5	3	3	2	4		4	1
CNL	7,148	74%	Belle Meade	3	2	5	2	4	3	2	2	3	2	1	1		3	2
CNL	43,051	0%	Blue Head Ranch	5	4	3	3	3	2	2	3	5	3	2	2		5	1
CNL	31,863	31%	Bombing Range Ridge	5	4	3	4	3	2	3	3	5	2	2	2	x	5	1
CNL	10,704	42%	Caloosahatchee Ecoscape	1	2	4	2	3	2	2	2	4	2	1	3		4	1
CNL	32,440	5%	Camp Blanding to Raiford Greenway	1	2	2	2	2	2	4	1	5	2	1	2		2	1
CNL	71,339	14%	Devil's Garden	2	3	3	1	2	2	1	1	4	2	1	3	x	4	1
CNL	59,274	35%	Etoniah/Cross Florida Greenway	2	3	3	2	3	2	3	3	5	3	2	4	x	4	1
CNL	11,182	0%	Half Circle L Ranch	4	5	4	2	3	3	2	2	4	3	1	1		4	1
CNL	22,399	8%	Hixtown Swamp	1	1	2	2	2	3	2	3	3	3	3	3		2	1
CNL	1,886	32%	Ichetucknee Trace	2	3	2	1	1	1	1	4	2	2	2	1		2	1
CNL	5,413	1%	Lake Hatchineha Watershed	1	1	3	3	3	2	2	2	3	2	2	1		4	1
CNL	22,518	62%	Lake Wales Ridge Ecosystem	4	4	4	4	2	2	2	3	4	2	1	2		5	1
CNL	9,610	57%	Longleaf Pine Ecosystem	3	4	2	5	2	1	3	5	4	2	2	1		4	1
CNL	1,797	0%	Natural Bridge Creek	1	1	1	1	2	2	4	2	1	3	1	1		2	1
CNL	27,501	41%	Osceola Pine Savannas	2	4	2	2	4	2	2	3	5	2	2	4	x	4	1
CNL	39,384	39%	Panther Glades	3	3	5	2	3	3	2	2	5	3	2	3		4	1
CNL	2,378	65%	Perdido Pitcher Plant Prairie	1	1	1	4	3	3	3	2	2	2	1	4		1	2
CNL	48,973	0%	Pine Island Slough Ecosystem	4	3	3	3	3	2	2	3	4	3	2	1		4	1
CNL	53,806	71%	Pinhook Swamp	2	4	3	2	2	2	4	3	5	3	2	1	x	2	1
CNL	44,999	0%	San Pedro Bay	1	2	3	1	2	3	3	3	4	2	1	1	x	2	1
CNL	2,180	0%	Shoal River Buffer	1	1	4	4	2	3	1	1	2	2	2	1		1	1
CNL	11,652	0%	South Goethe	4	4	2	3	2	2	4	4	4	3	1	4		4	1
CNL	589	0%	Southeastern Bat Maternity Caves	1	2	4	2	1	3	1	3	1	3	1	2		5	1
CNL	7,998	0%	Triple Diamond	5	5	4	4	4	3	1	2	2	2	1	1		4	1
CNL	8,128	49%	Twelvemile Slough	3	3	4	1	3	3	2	1	4	3	1	3		4	1
CNL	12,027	0%	Upper Shoal River	1	3	2	2	3	1	4	1	2	3	1	1		2	1
CNL	11,022	24%	Upper St. Marks River Corridor	1	3	3	1	3	3	3	4	3	4	2	3		1	1
CNL	17,292	47%	Wacissa/Aucilla River Sinks	2	3	3	1	4	3	3	2	4	5	2	4	x	2	3
CNL	23,427	71%	Wekiva-Ocala Greenway	4	3	3	3	4	3	2	3	3	3	3	4	x	4	3
CNL	10,069	0%	Wolfe Creek Forest	1	1	2	2	3	1	4	1	3	2	1	1		1	1
CHR	853	0%	Battle of Wahoo Swamp	1	1	3	1	1	4	1	3	2	5	1	1		4	1
CHR	89	62%	Okeechobee Battlefield	1	1	2	1	1	1	1	1	1	5	1	2	x	4	1
CHR	558	2%	Pierce Mound Complex	2	1	4	1	1	3	1	1	2	5	2	1		1	2
CHR	145	30%	Pineland Site Complex	1	1	1	1	1	1	1	1	1	5	3	1		2	1
CHR	56	12%	Three Chimneys	1	1	2	1	1	1	1	2	1	5	1	1		3	1
LTF	9,506	14%	Adams Ranch	5	5	3	3	3	2	1	3	4	3	2	2	x	4	1
LTF	11,981	0%	Arbuckle Creek Watershed	1	1	3	2	3	1	2	3	2	5	1	1		4	1
LTF	5,903	0%	Ayavalla Plantation	1	2	3	1	3	2	2	2	2	4	3	3		1	1
LTF	47,741	16%	Big Bend Swamp/Holopaw Ranch	2	2	3	2	3	3	2	2	5	2	1	3		4	1
LTF	2,460	0%	Clay Ranch	1	2	3	2	1	1	1	3	2	4	2	2	x	3	1
LTF	99,501	0%	Coastal Headwaters Longleaf Forest	2	2	2	2	3	1	4	1	5	3	0	1		1	1
LTF	9,041	0%	Conlin Lake X	3	3	3	2	3	4	2	3	4	3	3	4		4	1

Key	
5	Very High
4	High
3	Medium
2	Medium-Low
1	Low



# Natural Resource Acquisition Progress Report

			Resource Acres Protected								Percent Protected	
			Baseline	FL Forever Programs as of Sep 2016				Other Lands				
			MEASURES	Natural Resource Priorities	Total Statewide Acres	At start of FL Forever July 2001	BOT	WMDs	OGT, A&I, RFLPP		FCT	Acquired within FL Forever Projects
B1: Strategic Habitat Conservation Areas	Priority 1	1,457,080	845,190	15,420	3,530	1,270	1,660	18,500	20,280	551,230	58%	62%
	Priority 2	10,489,250	6,152,270	293,910	188,490	32,550	19,000	196,760	281,300	3,324,970	59%	68%
	Priority 3	4,936,120	1,411,500	6,250	14,620	2,130	7,520	37,890	90,170	3,366,040	29%	32%
	Priority 4	84,350	25,530	2,410	1,220	170	220	2,140	2,150	50,510	30%	40%
	Priority 5	1,084,300	78,230	5,250	6,340	690	2,280	11,560	21,300	958,650	7%	12%
	Total 2009 <sup>u</sup>	18,051,100	8,512,720	323,240	214,200	36,810	30,680	266,850	415,200	8,251,400	47%	54%
Total 1994 <sup>u</sup>		4,037,900	351,520	170,790	75,350	11,190	11,550	130,820	93,520	3,193,180	9%	21%
B2: FNAI Habitat Conservation Priorities	Priority 1	949,930	587,080	26,060	7,470	1,010	510	5,980	6,900	314,920	62%	67%
	Priority 2	2,242,280	1,678,270	28,250	5,760	1,770	1,720	21,480	39,310	465,720	75%	79%
	Priority 3	2,455,580	1,380,210	63,560	14,570	2,120	1,840	29,060	38,640	925,580	56%	62%
	Priority 4	4,601,590	2,124,220	87,490	54,600	11,980	6,330	62,160	113,210	2,141,600	46%	53%
	Priority 5	6,747,500	1,603,060	100,700	73,390	13,690	11,890	107,180	131,780	4,705,810	24%	30%
	Priority 6	3,204,060	589,620	12,270	36,240	4,340	6,240	23,790	68,920	2,462,640	18%	23%
Total		20,200,940	7,962,460	318,330	192,030	34,910	28,530	249,650	398,760	11,016,270	39%	45%
B3: Ecological Greenways	Priority 1	11,629,920	7,444,250	268,000	126,590	23,800	3,020	155,280	208,810	3,400,170	64%	71%
	Priority 2	5,102,510	1,182,560	67,530	73,470	9,840	11,730	75,790	108,310	3,573,280	23%	30%
	Priority 3	1,239,940	216,190	5,150	48,870	460	1,130	22,130	22,950	923,060	17%	26%
	Priority 4	1,526,260	331,720	23,840	9,510	1,690	10,730	16,550	38,520	1,093,700	22%	28%
	Priority 5	3,585,110	669,170	7,390	11,860	4,940	4,700	56,290	160,000	2,670,760	19%	26%
	Total	23,083,740	9,843,890	371,910	270,300	40,730	31,310	326,040	538,590	11,660,970	43%	49%
B4: Under-represented Natural Communities	Upland Glade (G1)	40	0	0	0	0	0	0	0	40	0%	0%
	Pine Rockland (G1)	16,850	15,730	100	0	0	0	70	160	790	93%	95%
	Scrub (G2)	489,570	341,560	4,280	870	750	780	4,280	3,770	133,280	70%	73%
	Rockland Hammock (G2)	18,770	15,160	340	0	0	10	620	140	2,500	81%	87%
	Dry Prairie (G2)	155,560	92,380	2,790	470	160	0	2,230	3,290	54,240	59%	65%
	Seepage Slope (G2)	6,230	6,200	0	0	0	0	0	0	30	100%	100%
	Sandhill (G3)	773,090	466,780	5,220	2,250	1,260	160	1,610	6,680	289,130	60%	63%
	Sandhill Lake (G3)	70,780	12,710	110	300	10	10	160	430	57,050	18%	19%
	Upland Pine (G3)	168,250	149,030	2,400	440	900	0	210	160	15,110	89%	91%
	Pine Flatwoods (G4)	2,332,850	1,052,050	65,290	24,630	3,790	5,480	39,450	38,230	1,103,930	45%	53%
	Upland Hardwood (G5)	230,520	35,990	610	1,270	360	1,060	230	1,700	189,300	16%	18%
Total		4,262,510	2,187,590	81,140	30,230	7,230	7,500	48,860	54,560	1,845,400	51%	57%
B5: Landscape-sized Protection Areas	Acres acquired within contiguous conservation lands ≥ 50,000 acres	n/a	7,348,980	290,310	190,410	28,000	14,700	174,900	253,030	n/a	n/a	n/a



# Current/Future Work

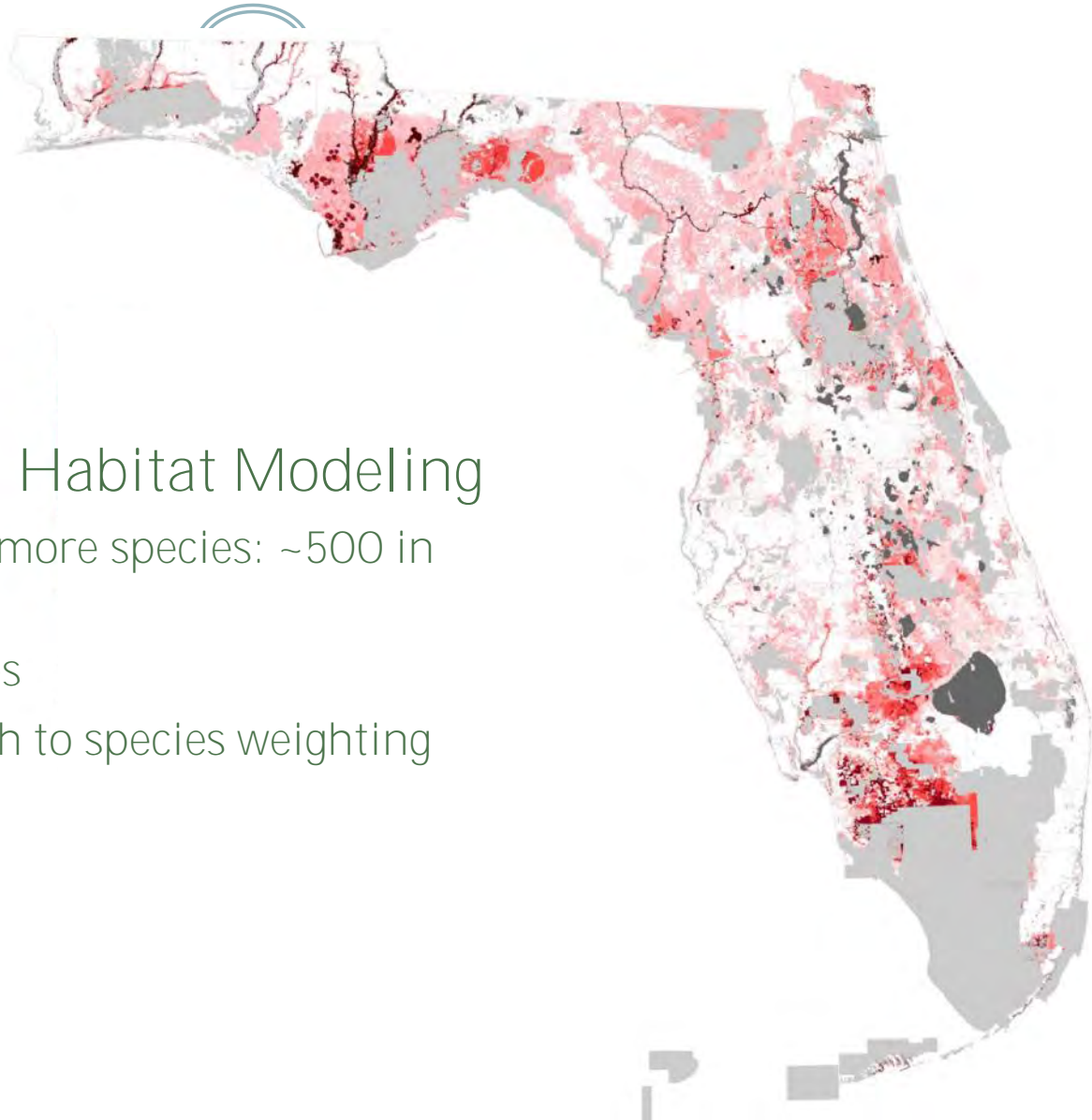


- UPDATING DATA! New land cover, new conservation lands boundaries, new FF projects means new data needed!
- Assisting Div. of State Lands with ARC Ranking Materials
- Improving measures of projects that meet multiple goals



# Current/Future Work

- Automating Species Habitat Modeling
  - Allowing us to model more species: ~500 in progress
  - More frequent updates
  - More refined approach to species weighting





Find address or place

## Map Layer Options

### Operational layers

- Over BOT Projects
- Conservation Lands
- Habitat Conservation Areas FF
- Species Habitat Conservation
- Greenways
- Represented Natural Communities
- Upland
- Surface Waters
- Geological Resources
- Wetlands
- Large
- Forestry

# FLORIDA FOREVER CONSERVATION DATA VIEWER

Explore Natural Resources on Florida Forever Projects

### USE THIS MAP VIEWER TO:

- View Florida Forever BOT Project Boundaries and Summary Statistics
- Compare Acquired vs. Remaining Lands on Florida Forever Projects
- View Priorities for 10 Different Natural Resource Data Layers on Projects
- Compare Conservation Values Within and Across Projects
- Link to Detailed Project Information from FDEP and FNAI

For instructions on using the map click [MAP HELP](#)

Funding provided by the **Florida Department of Environmental Protection**



The information contained on this map viewer is intended for general public use and should not be relied upon for regulatory or other legal decision-making. Note that many privately-owned conservation lands and conservation easements are not open to the public.

☐ Do not show this splash screen again.

OK



Florida Forever Projects

### Legend

#### Florida Forever BOT Projects

Unacquired Portions



Full Boundaries



#### Florida Conservation Lands

Florida Conservation Lands



### Map Layer Options

#### Operational layers

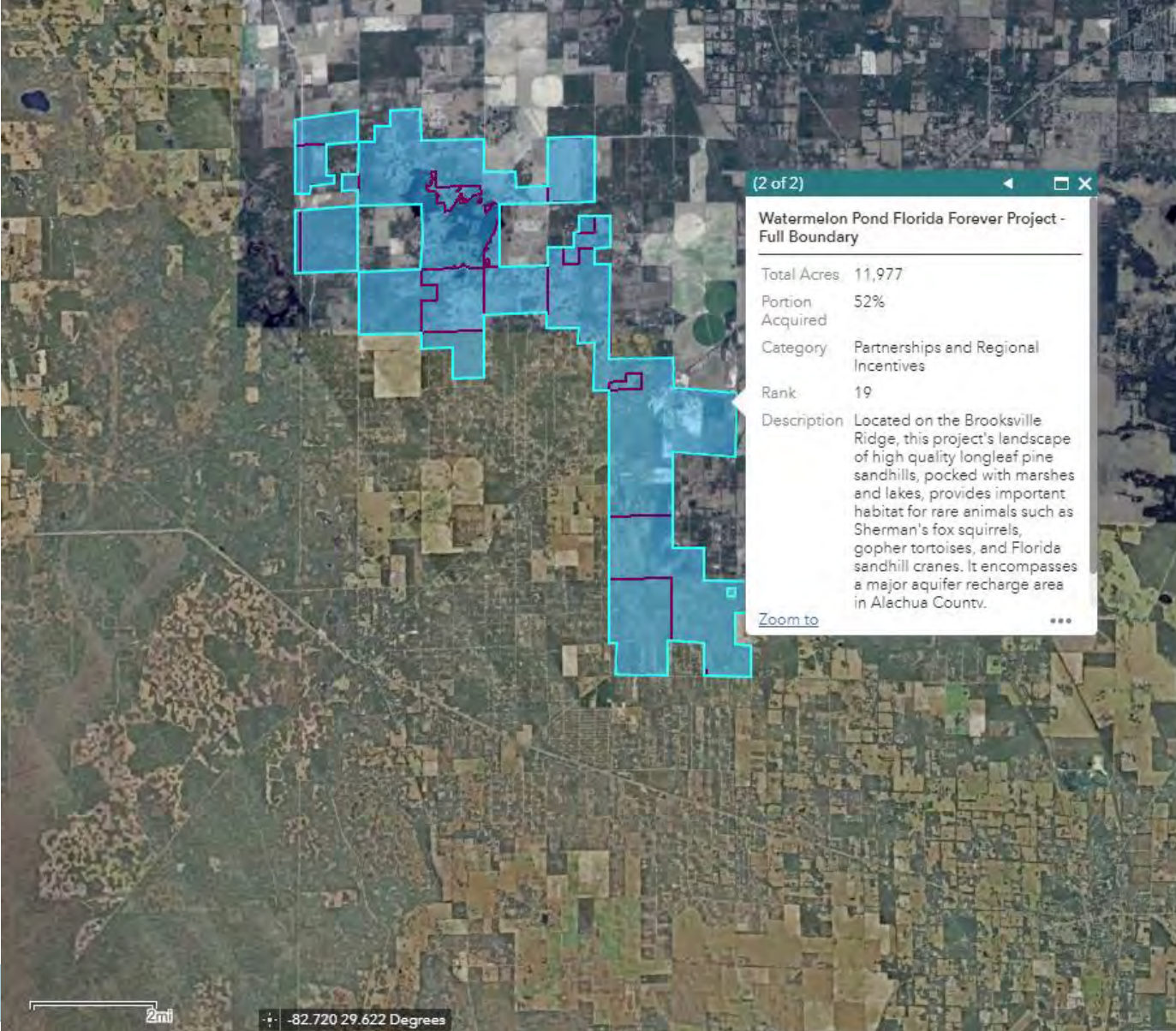
- ☒ Florida Forever BOT Projects
- ☒ Unacquired Portions
  - ☒ Full Boundaries
- ☒ Florida Conservation Lands
- ☐ Strategic Habitat Conservation Areas FF
- ☐ FNAI Rare Species Habitat Conservation Priorities
- ☐ Ecological Greenways
- ☐ Under-represented Natural Communities
- ☐ Natural Floodplain
- ☐ Significant Surface Waters
- ☐ Fragile Coastal Resources
- ☐ Functional Wetlands
- ☐ Aquifer Recharge
- ☐ Sustainable Forestry

30mi

-80.834 28.620 Degrees



Find address or place



(2 of 2)

**Watermelon Pond Florida Forever Project - Full Boundary**

Total Acres	11,977
Portion Acquired	52%
Category	Partnerships and Regional Incentives
Rank	19
Description	Located on the Brooksville Ridge, this project's landscape of high quality longleaf pine sandhills, pocked with marshes and lakes, provides important habitat for rare animals such as Sherman's fox squirrels, gopher tortoises, and Florida sandhill cranes. It encompasses a major aquifer recharge area in Alachua County.

[Zoom to](#)

## Map Layer Options

### Operational layers

- ☒ Florida Forever BOT Projects
- ☒ Unacquired Portions
- ☒ Full Boundaries
- ☐ Florida Conservation Lands
- ☐ Strategic Habitat Conservation Areas FF
- ☐ FNAI Rare Species Habitat Conservation Priorities
- ☐ Ecological Greenways
- ☐ Under-represented Natural Communities
- ☐ Natural Floodplain
- ☐ Significant Surface Waters
- ☐ Fragile Coastal Resources
- ☐ Functional Wetlands
- ☐ Aquifer Recharge
- ☐ Sustainable Forestry



**Legend**

**Florida Forever BOT Projects**

Unacquired Portions

☐

**Strategic Habitat Conservation Areas FF**

☐ Priority 1 (Highest)  
☐ Priority 2  
☐ Priority 3  
☐ Priority 4  
☐ Priority 5

(1 of 2)

**FFCNA Layer: Strategic Habitat Conservation Areas for FL Forever**

Descrip Priority 3  
 Resource Strategic Habitat Conservation Areas (for Florida Forever)

[Zoom to](#)

**Map Layer Options**

**Operational layers**

☒ Florida Forever BOT Projects

☒ Unacquired Portions

☐ Full Boundaries

☐ Florida Conservation Lands

☒ Strategic Habitat Conservation Areas FF

☐ FNAI Rare Species Habitat Conservation Priorities

☐ Ecological Greenways

☐ Under-represented Natural Communities

☐ Natural Floodplain

☐ Significant Surface Waters

☐ Fragile Coastal Resources

☐ Functional Wetlands

Priority 1 (Highest)  
 Priority 2  
 Priority 3  
 Priority 4  
 Priority 5  
 Priority 6



# Thank You



[http://www.fnai.org/WebMaps/FFCNA\\_Map/](http://www.fnai.org/WebMaps/FFCNA_Map/)

[www.fnai.org](http://www.fnai.org)

[joetting@fnai.fsu.edu](mailto:joetting@fnai.fsu.edu)