



**A New Day
for
*Florida Forever***



The New Florida Forever: 2008 Legislation

Special appreciation to the Division of State Lands, DEP and the Florida State Archives, Dept. of State, for their assistance with this presentation.



Florida Capitol, Tallahassee, c. 1885

“An Act Relating to Land Acquisition and Management”

Chapter 2008-229, Laws of Florida

Re-creates the Florida Forever program and provides authority for new funding via bonds and cash up to \$3 billion beginning July 2009.

Compels the use of best emerging science, technology and creativity, and sets new standards for measuring and achieving success.

Provides a framework for acting on Florida’s land conservation needs now, while also looking far ahead to ensure the long-term protection, resiliency and resource base Florida must have.

A tropical beach scene with a large palm tree in the foreground, a sandy path leading through grass, and a calm ocean in the background. The palm tree is the central focus, leaning from the right side of the frame. The path is made of sand and leads towards the water. The sky is a pale, overcast blue.

The Challenge



Miami, 1922



**Leaders
Respond**

Continuity



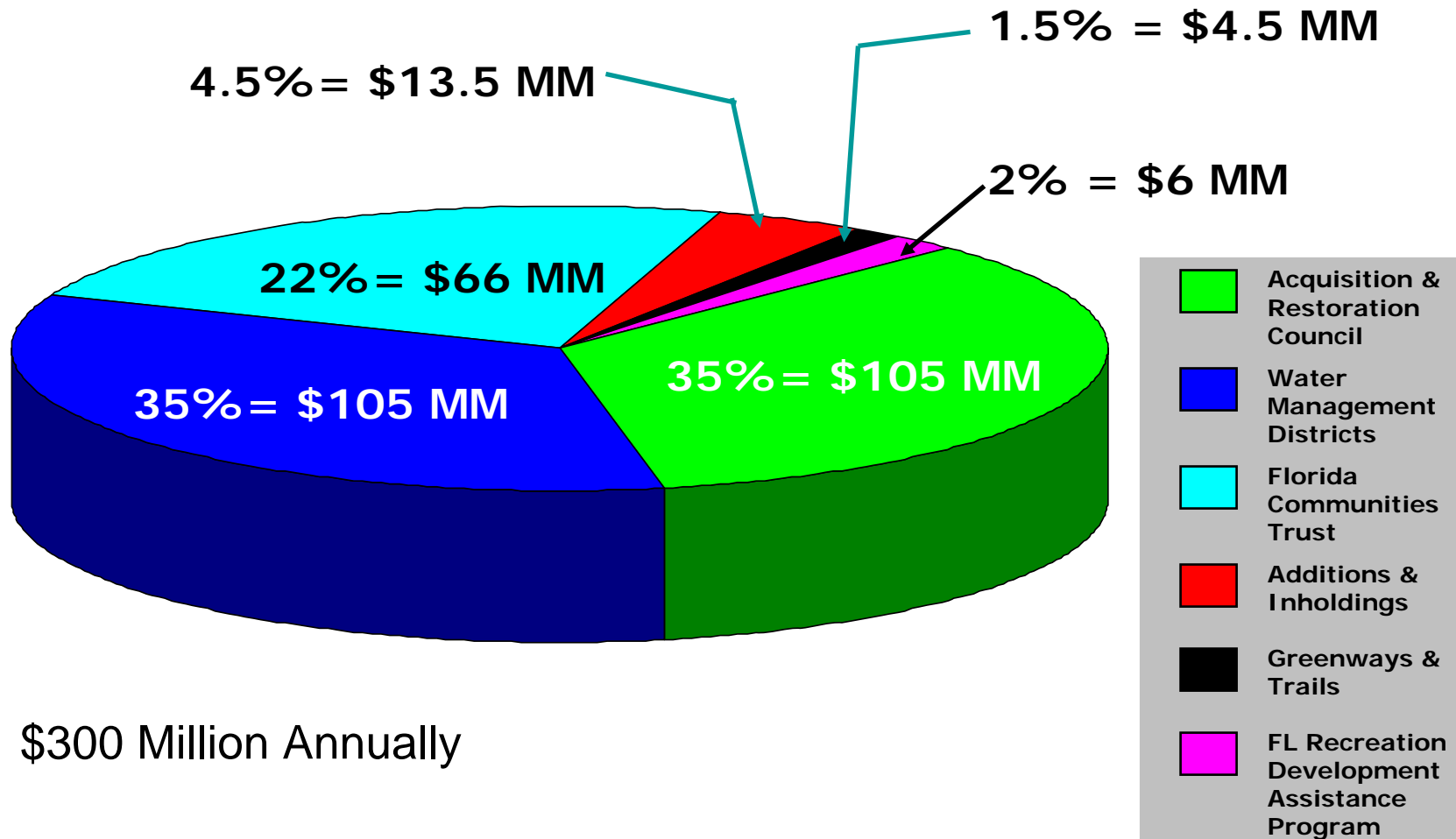


Change

Major New Provisions

- New Funding, Workplan & Acquisition List
- Unprecedented Call for Coordination between Partners and Stakeholders
- More visible and rigorous standards for science, measurement and transactions
- New attention to public access
- Increased land management focus
- More creative use of markets and economics

Original Distribution of Funds



\$300 Million Annually

New Florida Forever Distribution

\$300 Million Annually

1.5% = \$4.5 MM

2% = \$6 MM

3.5% = \$10.5 MM

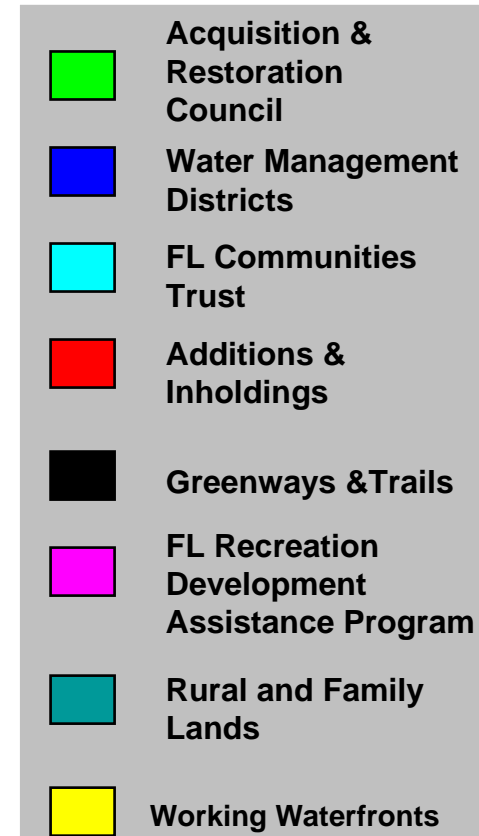
2.5% = \$7.5 MM

4.5% = \$13.5 MM

21% = \$63 MM

30% = \$90 MM

35% = \$105 MM





Daytona Beach, 1906

Workplan

- Acquisition projects previously on the A and B lists will all be carried over to five new:
- **Workplan Categories:**
 - (a) A critical natural lands category for functional landscape-scale natural systems
 - (b) A partnerships or regional incentive category

Workplan

- **Workplan Categories:**
 - (c) substantially complete category of projects;
 - (d) climate-change category list of lands where acquisition or other conservation measures will address the challenges of global climate change;

Workplan

- **Workplan Categories:**

(e) A less-than-fee category for working agricultural lands that significantly contribute to resource protection through conservation easements and other less-than-fee techniques, tax incentives, life estates, landowner agreements, and other partnerships

Science and Innovation

- ARC to develop rules that establish specific criteria and numeric performance measures to be utilized when developing the annual Florida Forever acquisition list.
- Each agency will estimate the calculable financial benefits to the public for the ecosystem services provided by its conservation lands.
- Requires study to determine the potential and value of using state lands for assisting in efforts to address climate change issues.
- Encourages broad partnering and use of economic markets to help preserve significant private lands and natural resources in working agriculture.

Land Management



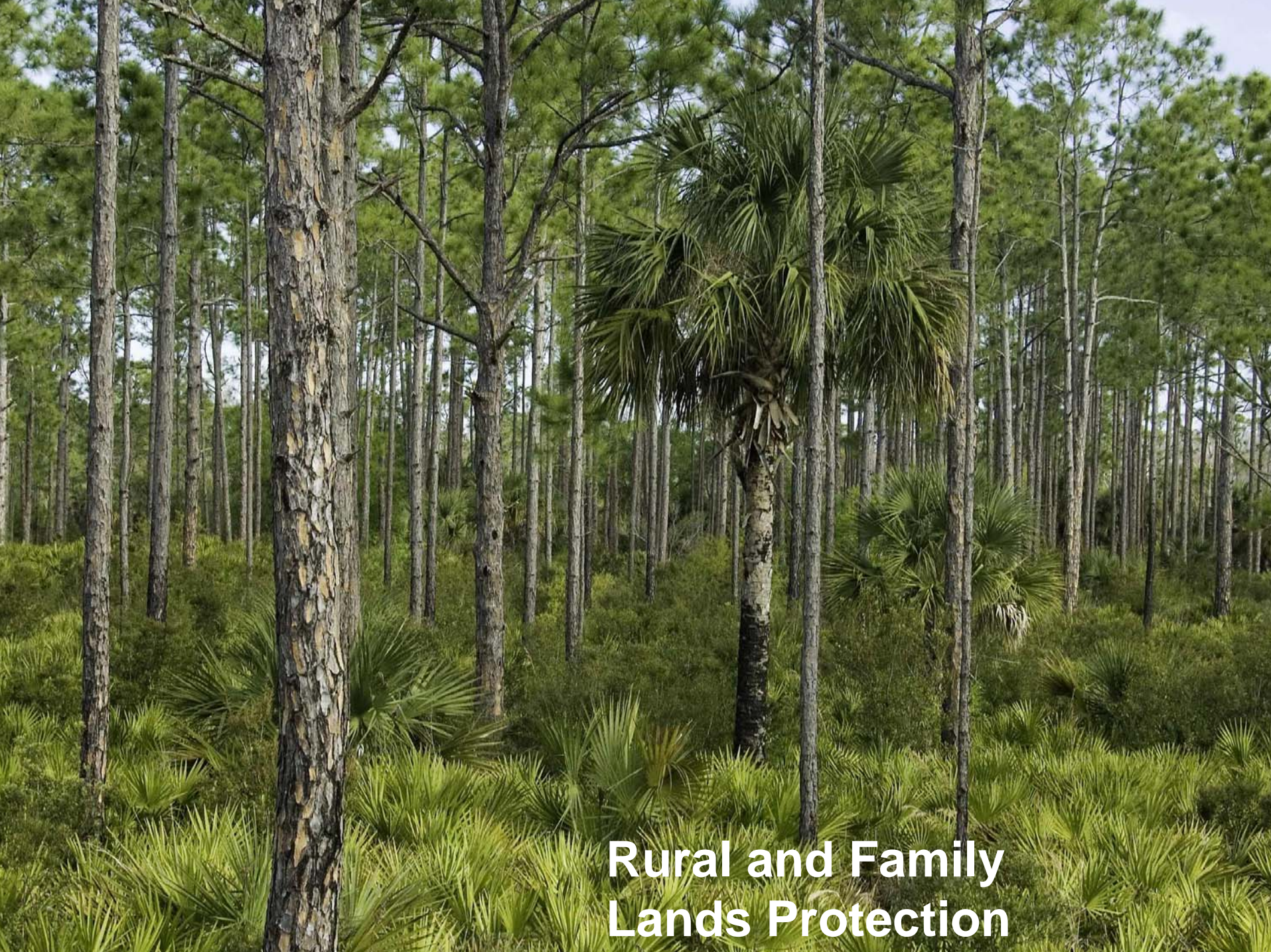
- Land Management Uniform Accounting Council will establish new funding formula for distributing CARL proceeds (40%).
- Requires cost accounting models that create uniformity in how management needs and funding are estimated and budgeted.
- Increases requirements for interagency planning, coordination and reporting.
- Potentially increases funds available to management to *at least* 1.5% of all funds ever deposited in the P2K or Florida Forever Trust Funds.



Public Access and
Recreation

New Provisions

- Directs 3% of the funds allocated for DEP's (ARC) acquisitions be used for capital expenditures to expedite public access to lands.
- Minimum of 1 percent of inholdings and additions allocations be used for capital projects needed to expedite public access.
- Fulfills legislative intent for increased public access and recreation.



**Rural and Family
Lands Protection**

Rural and Family Lands

- Receives 3.5% (\$10.5 M annually)
- Operated by the Department of Agriculture in coordination with the DEP.
- DACS acquires through perpetual easements and other perpetual less-than-fee techniques.
- Fulfills Legislative intent for additional acquisition goal of preserving agricultural lands under threat of conversion to development through less-than-fee acquisitions and other private-public partnerships .



Gainesville farm, 1922



**Stan Mayfield Working
Waterfronts Program**

Tarpon Springs, c. 1910

Working Waterfronts

- Receives 2.5% (\$7.5 Million) Annually
- Operated by the Dept. of Community Affairs
- Coordinates with other Florida Communities Trust projects emphasizing funding for direct water access.
- Provides another cultural and coastal conservation strategy.



Projects and Acquisition

- The Board of Trustees accepted the new Interim Workplan developed by ARC
- The current A and B lists have been spread across the five new workplan categories for funding
- Rulemaking workshops early next year will solidify workplan and new criteria and measures for annual project analyses and ranking



Kissimmee Chain, 1800s

For a copy of the
exact legislation,
visit

www.flsenate.gov

and look for the
2nd Engrossed
version, SB 542

