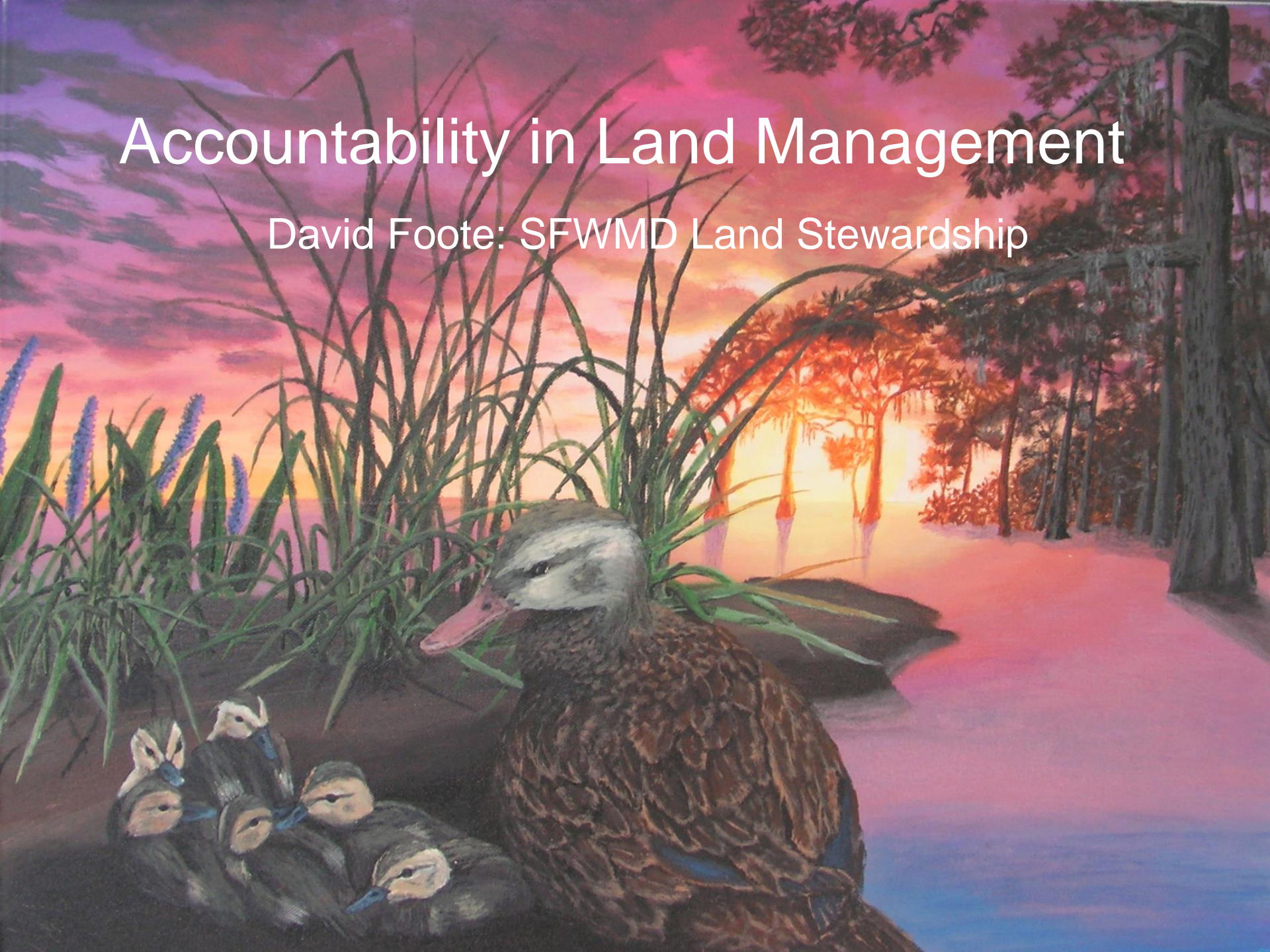


Accountability in Land Management

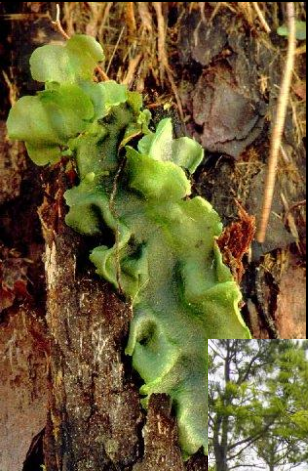
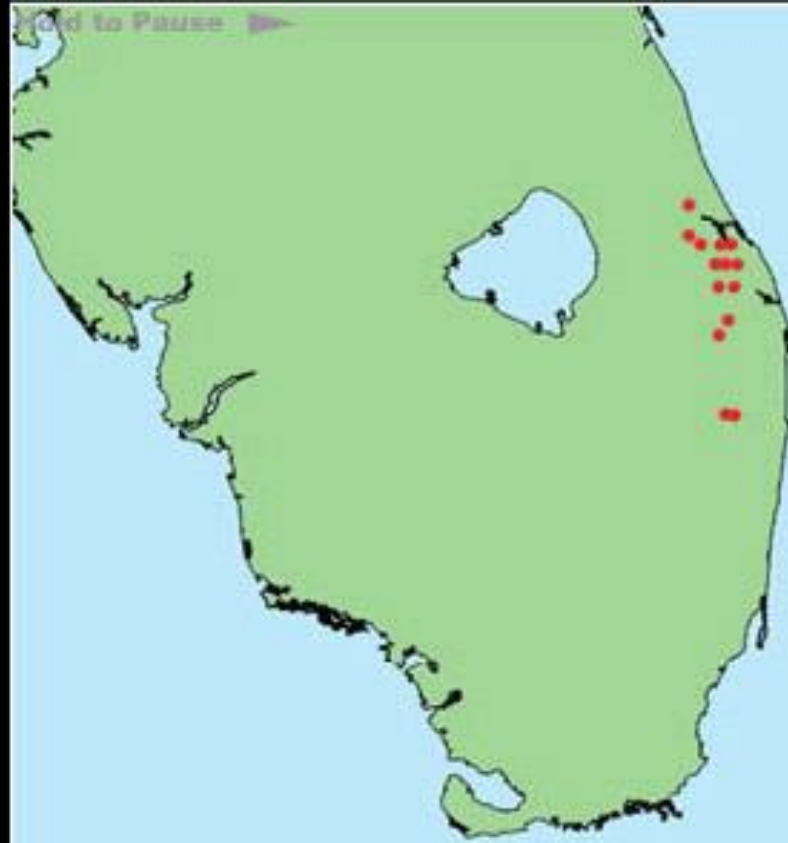
David Foote: SFWMD Land Stewardship





Lygodium
Microphyllum
in South Florida

1978 Survey





Accountability Paradox



Divert (MUTUAL) Resources
(Cover the Basics)

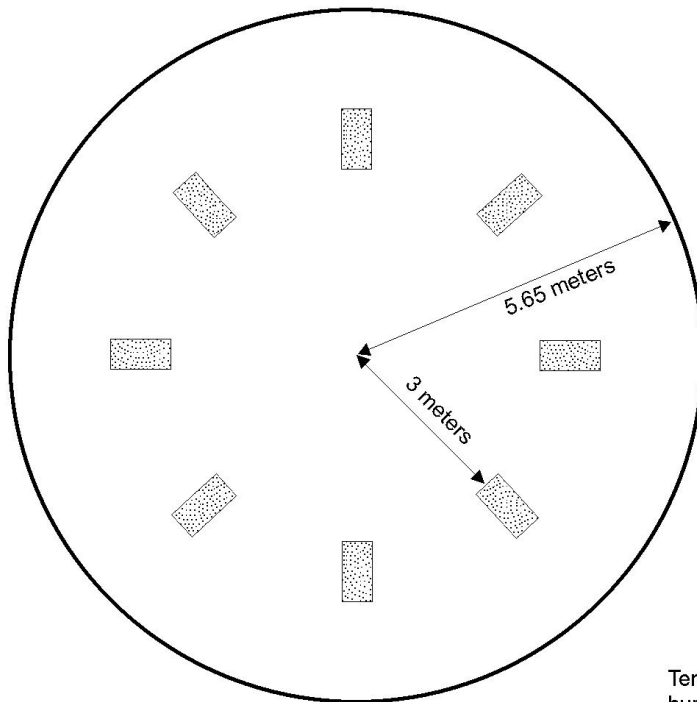
For areas where palmetto dominance is $> 50\%$,
burning the dependent communities with
burning to achieve between 30% and 60%
mortality of palmettos while keeping
pine



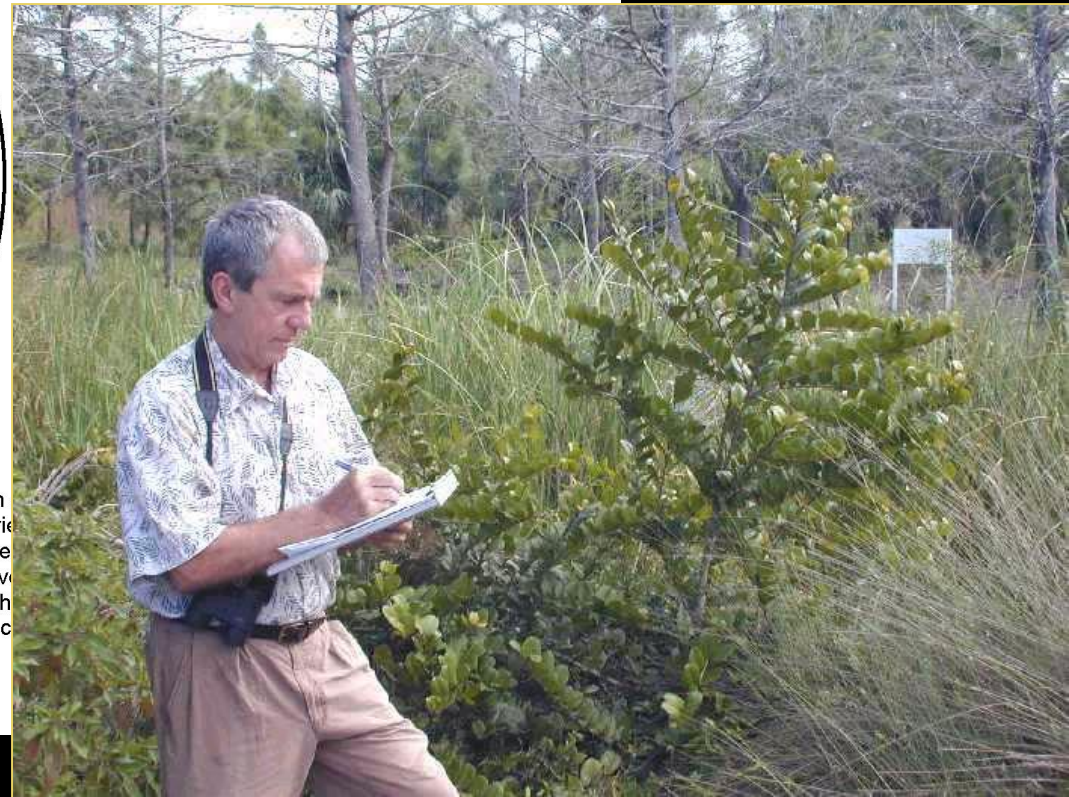


Direct Sampling

Vegetation Monitoring of the Kissimmee River Floodplain Prescribed Burn



Circular plot 100 square meters

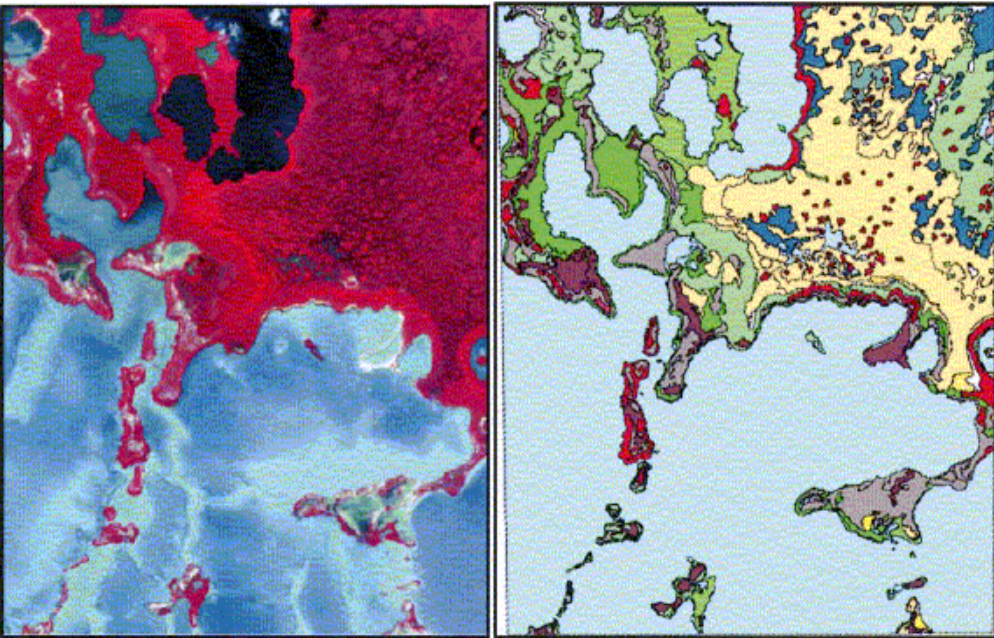


Ten
buried
pipe
Cov
eigh
be c

Indicator Species

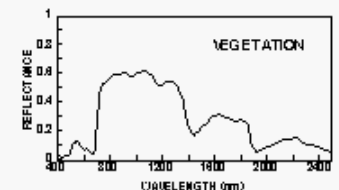
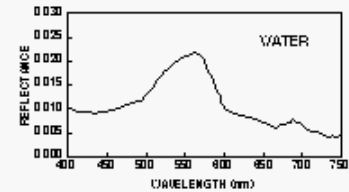
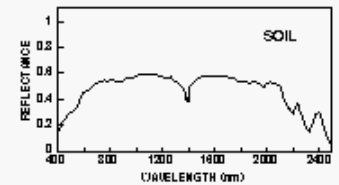
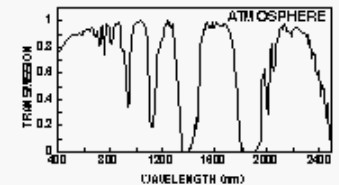
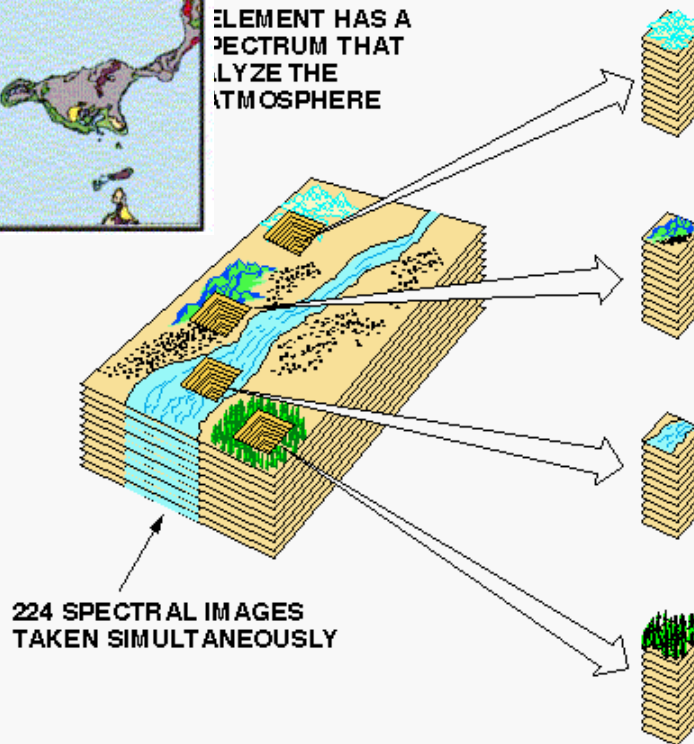


Hyperspectral Imaging



AVIRIS CONCEPT

ELEMENT HAS A SPECTRUM THAT ANALYZE THE ATMOSPHERE



So what's a Land Manager to do?



Worthless
Measures

Meaningful
Indicators

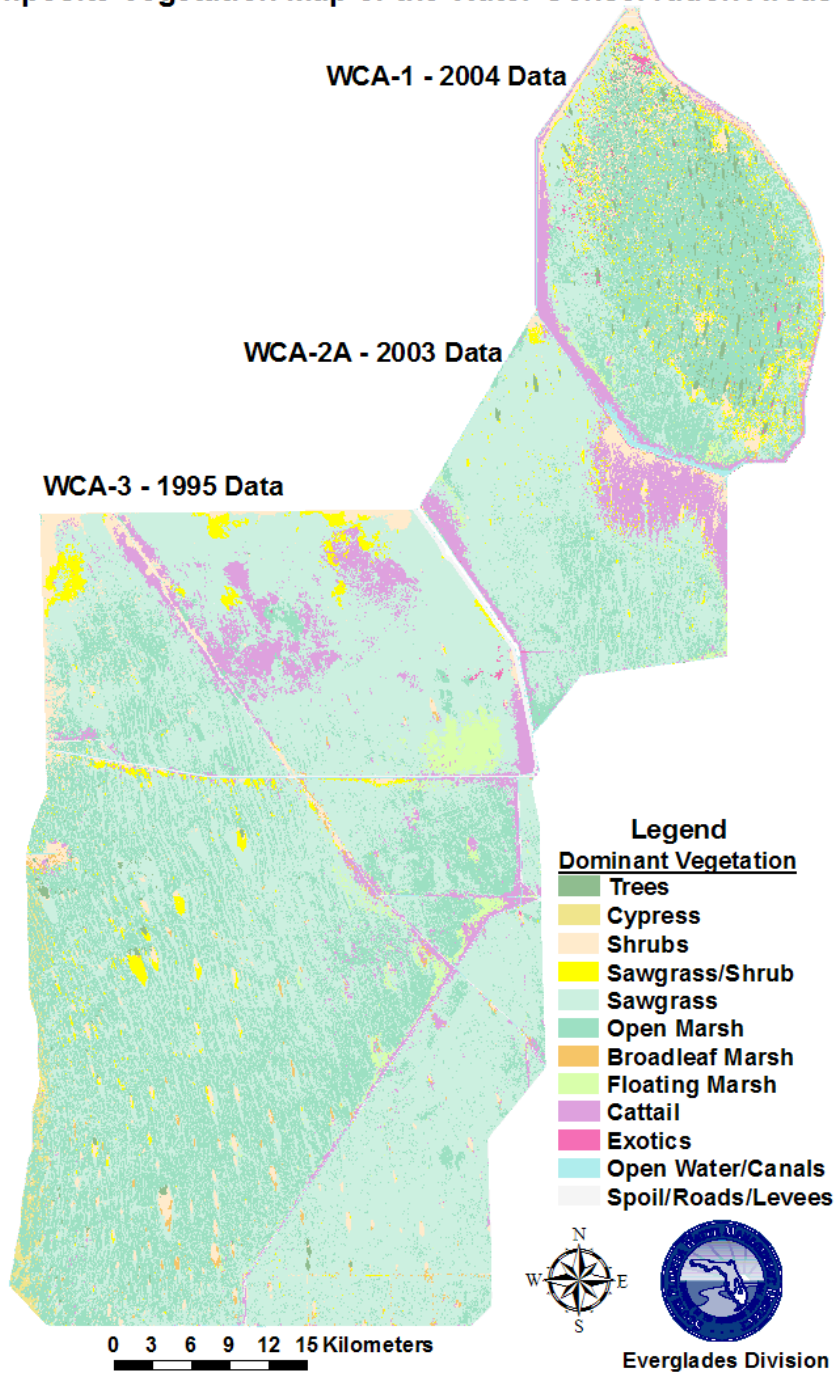
Accurate
Measure

Worthless
Indicators



Composite Vegetation Map of the Water Conservation Areas

Remote Sensing and Aerial Sketch Mapping



Limited Sampling and Photo Monitoring Points

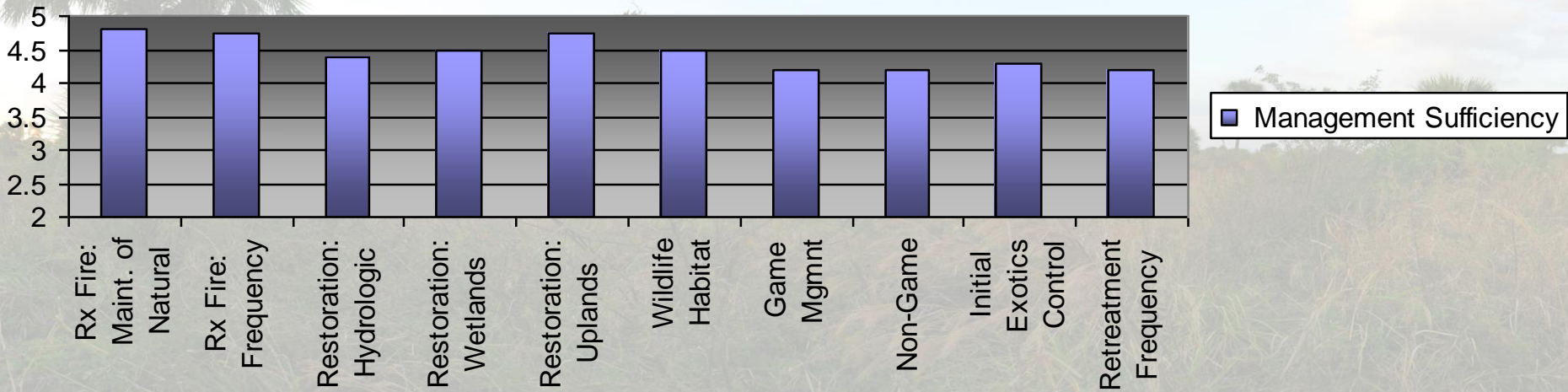


Expert Judgments

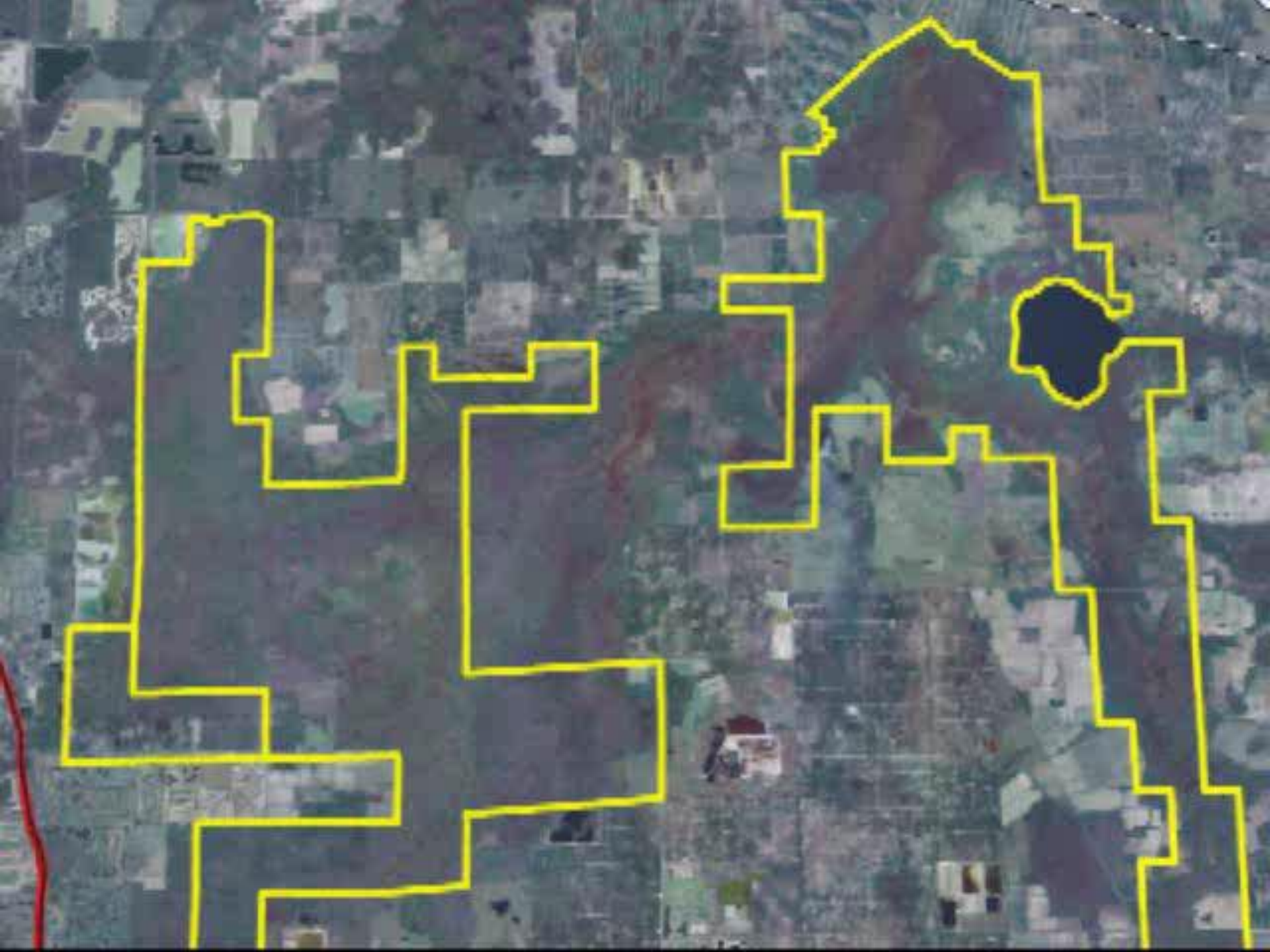


Expert Judgments: Interagency Management Review Teams

DuPuis Management Area
Resource Management



New Success Indicators



| 3-5 yr px | 3-5 yr ac | 5 - 10 yr px | 5 - 10 yr ac | 10-15 yr px | 10-15 yr ac | Acres on schedule | % on schedule | |
|-----------|-----------|--------------|--------------|-------------|-------------|-------------------|---------------|----------------------------------|
| 443 | 98.52 | 867 | 192.82 | 1 | 0.22 | 291.56 | 99 | Xeric Oak Scrub |
| 63 | 14.01 | 174 | 38.70 | | 0.00 | 52.71 | 96 | Sand Pine Scrub |
| 74 | 16.46 | | 0.00 | 17 | 3.78 | 16.46 | 74 | Sandhill |
| 4253 | 945.85 | 9161 | 2,037.36 | 2803 | 623.37 | 5,154.22 | 66 | Dry Prairie |
| 15014 | 3,339.04 | 4429 | 984.99 | 6239 | 1,387.52 | 9,862.54 | 81 | Pinelands |
| 19115 | 4,251.08 | 26113 | 5,807.40 | 5911 | 1,314.58 | 14,538.62 | 92 | Freshwater Marsh and Wet Prairie |
| 46472 | 10,335.13 | 9828 | 2,185.70 | | 0.00 | 13,326.34 | 100 | Sawgrass Marsh |
| 59741 | 13,286.00 | 32321 | 7,188.00 | | 0.00 | 21,645.00 | 100 | Marl Prairie |
| | | | | | | 64,887.44 | 91% | Total |

Acceptable Exotic Infestation Levels

| | |
|--------------|------------------------|
| Maintenance- | Less than 1% dominance |
| Low- | 1-10% dominance |

Unacceptable Exotic Infestation Levels

| | |
|---------|--------------------|
| Medium- | 10 – 50% dominance |
| High- | 50-100% dominance |

73 % of Lands at Acceptable Level



