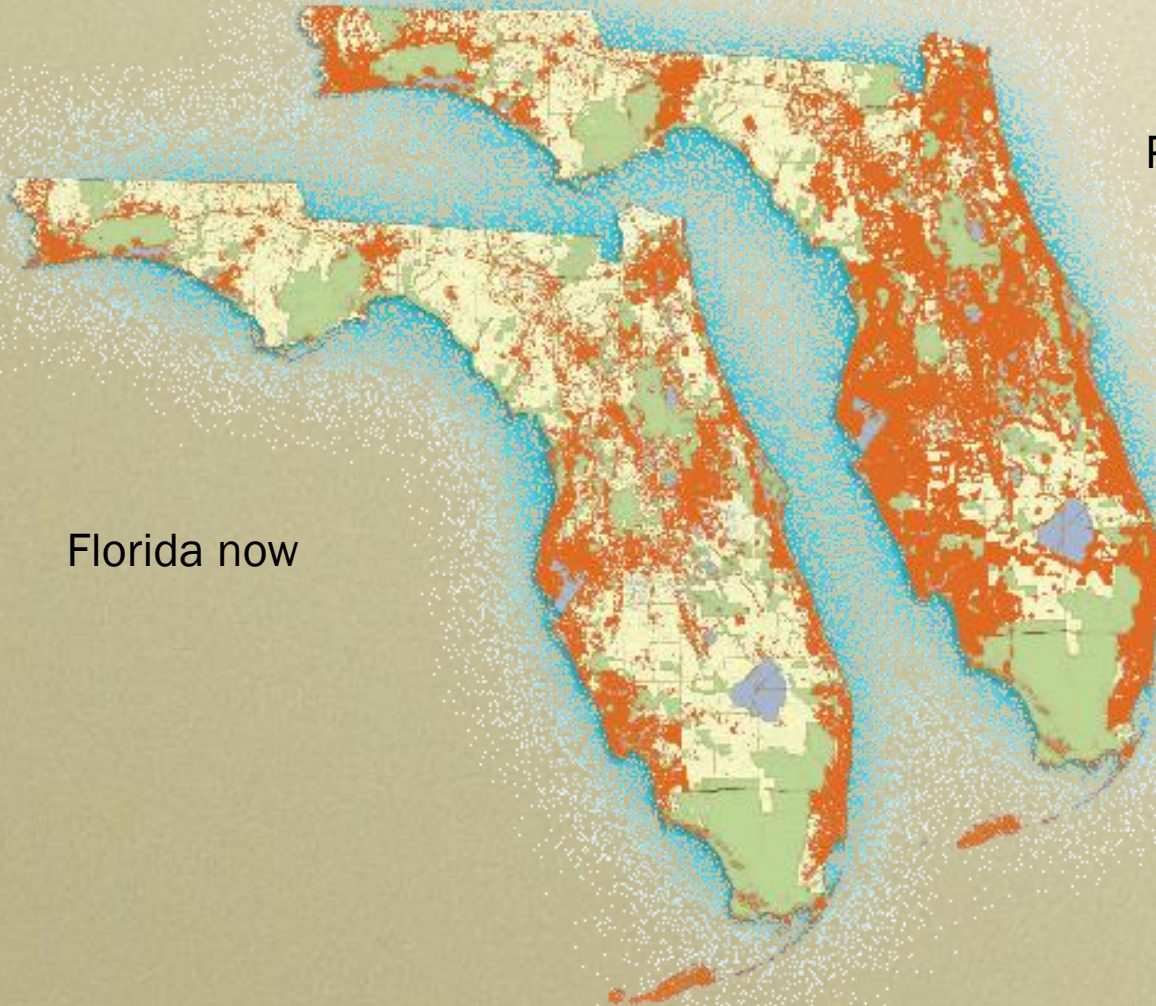




Wildlife 2060:

What's at stake for Florida?

What future do we want?



Florida now

Possible Florida
in 2060



Issues to consider

- Habitat loss
- Habitat isolation
- Coastal challenges
- Water quality and quantity
- Wildlife/Human interactions
- Access to land and water



Habitat loss



2.3 million acres of black bear habitat



2.1 million acres of wild turkey habitat



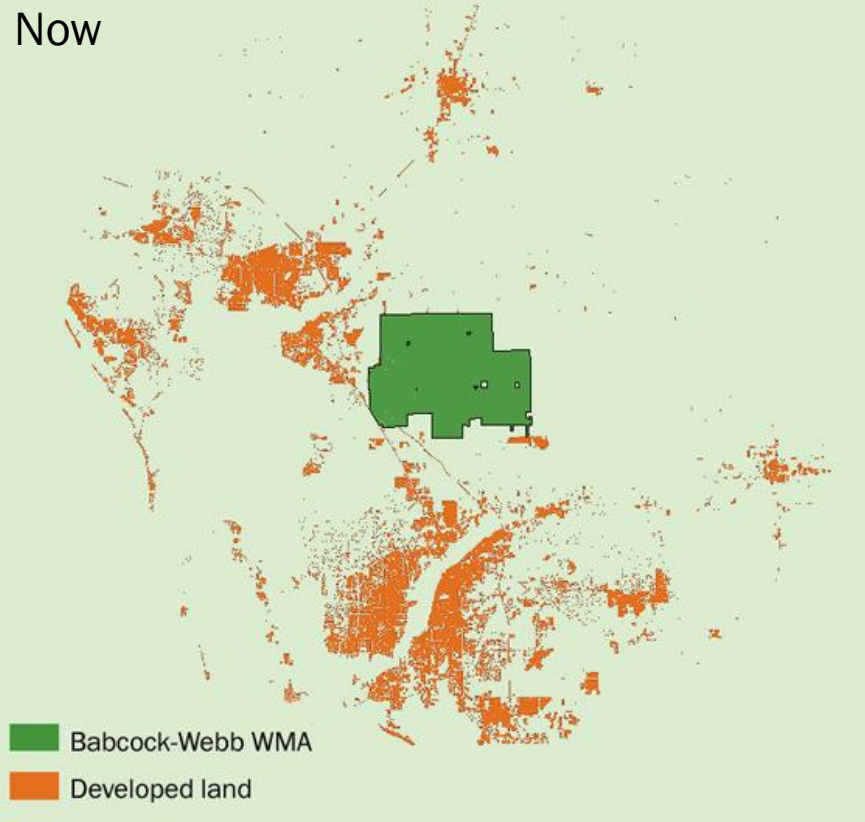
700,000 acres of gopher tortoise habitat



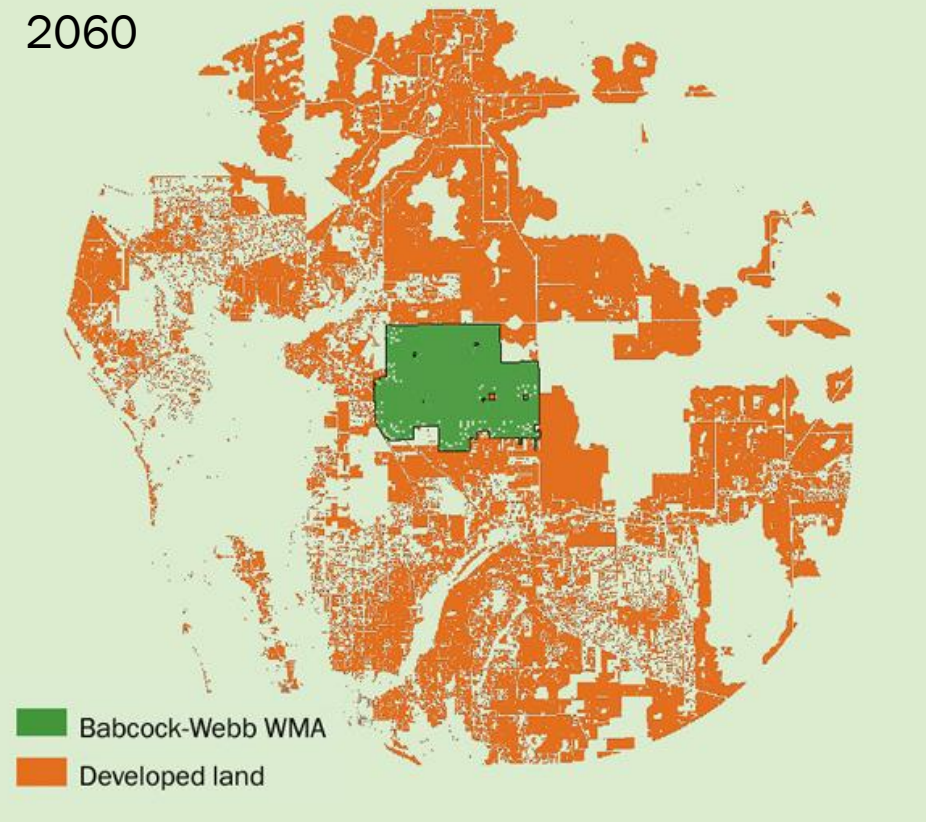
How important are fish and wildlife species to you?

Habitat isolation

Now



2060



How do you burn when you are surrounded by a sea of development?

Working for wildlife



Landowner assistance helps folks get it right at Watermelon Pond

The future is up to us

Wildlife 2060: what's at stake for Florida?



Cooperative Conservation Blueprint

A consensus starting point
for planning our future

- An 'inclusive' overlay map,
- Incentives to apply it,
- Internet availability to use it



Blueprint Outreach and Partnering

- Core Team
- Steering Committee
- Stakeholder Outreach
- Internet Delivery
- 3 Incentive Working Groups
- GIS Technical Group

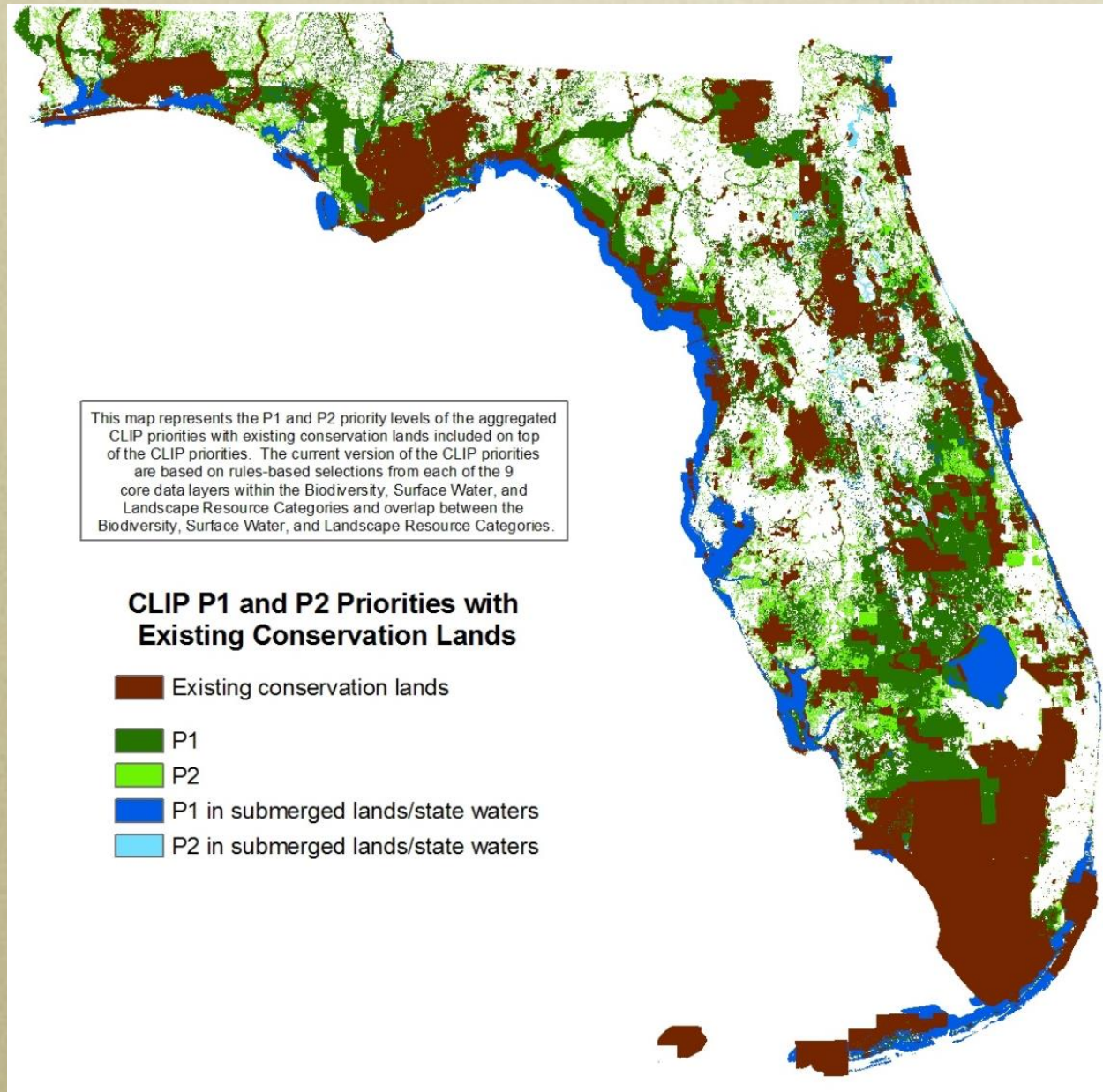


CLIP Blueprint

- Complete Critical Lands & Waters Identification Project (July 1 '08 roll-out)
- Create a draft Blueprint overlay with outreach to
 - State's largest landowners (FL Land Council, etc.)
 - Landowner representatives (Farm Bureau, FL Forestry...)
 - Land use agencies (FDEP, FDOT, FDOF, DCA, WMDs)
 - Counties and Regional Planning Councils



CLIP Consensus Priority 1 & 2



Online Application

- CLIP & Blueprint available to use
- Final CLIP v1.0 update (July 1, '08)
- Display draft Blueprint overlay
- Phases
 - Viewing and understanding
 - Review and comment
 - Use and analysis



DRAFT

Critical Lands and Waters Identification Project Century Commission CLIP Phase I Report



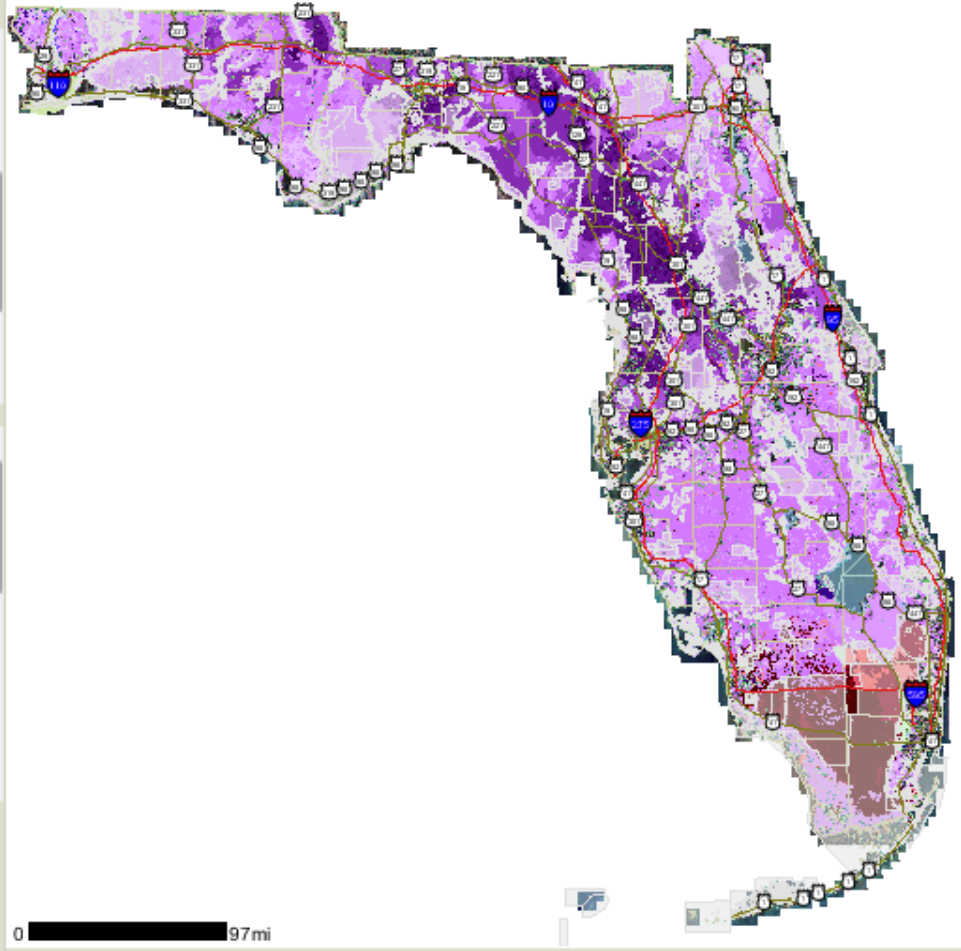
[Send Email](#)

Legends and More Information

- Under-Protected Natural Communities
- Strategic Habitat Conservation Areas
- Significant Surface Waters
- Wetlands
- !DRAFT UNDER REVISION! Aquifer Recharge
- Interstates
- US Highways
- Major Water Bodies
- Managed Areas
- County Boundaries

Welcome

The Critical Lands and Waters Identification Project (CLIP) is part of an analysis by the Century Commission to envision Florida's future out 25 and 50 years, and to develop recommendations to the Governor and Legislature on how the state can address the impacts of population growth. The goal is to achieve social, economic and environmental sustainability of Florida's future. The purpose of this website is to make CLIP's core data accessible to policy makers, planners, landowners, environmental and other stakeholders. CLIP is the first step in a



The analysis, maps, and data on this site are for statewide conservation planning purposes and are not for regulatory decisions.

Blueprint Incentives – 2 Tracks

1. Guide to Current Incentives, Evaluate Programs
2. Land, Water, and Carbon Markets Working Groups
 - 6 conceptual ideas (Aug. '08)
 - Test and develop ideas with a broad audience (Apr. '09)
 - Complete testing and development (Aug. '09)
 - Go to the legislature (Mar. 2010)

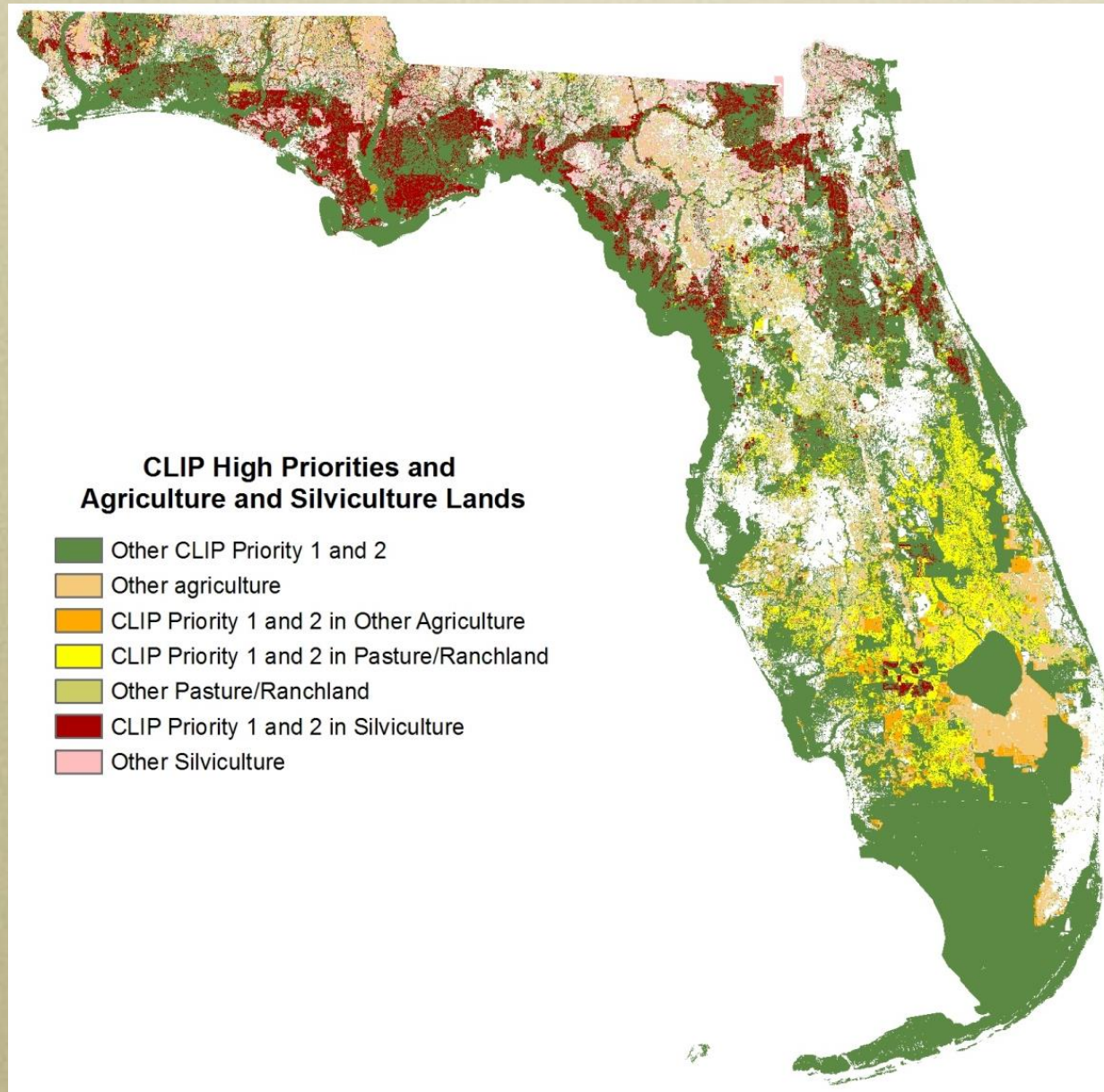


Incentive Ideas

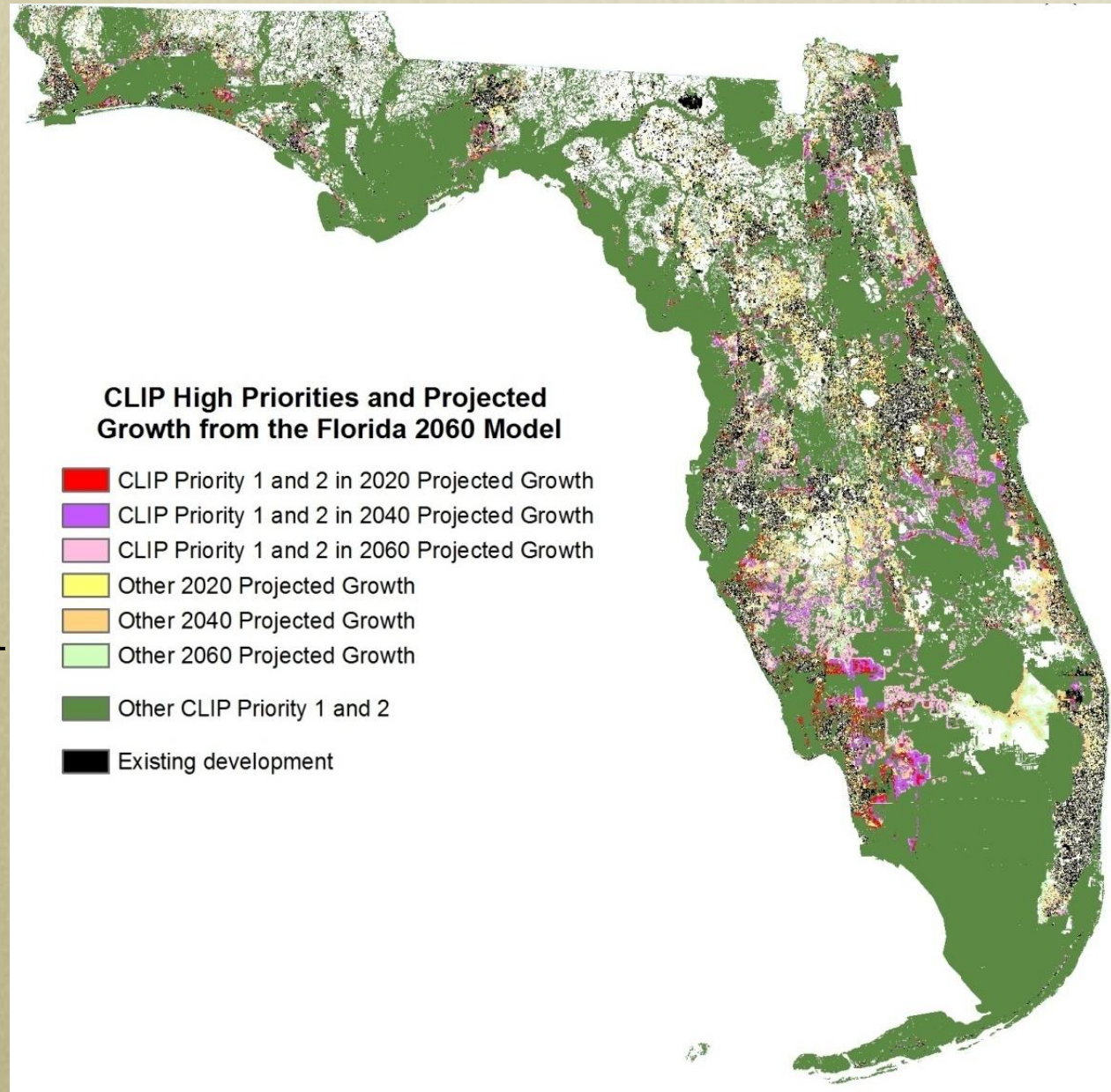
- Land
 - Safe Haven Master Strategy (Lg. landholdings)
 - Conservation Development (Sm. landholdings)
- Water
 - Self Supply Water Security & Resource Restoration Partnerships
 - Hydrologic Restoration of Natural Systems
- Carbon Markets
 - Carbon Offset Program
 - Inventorying Carbon Credits



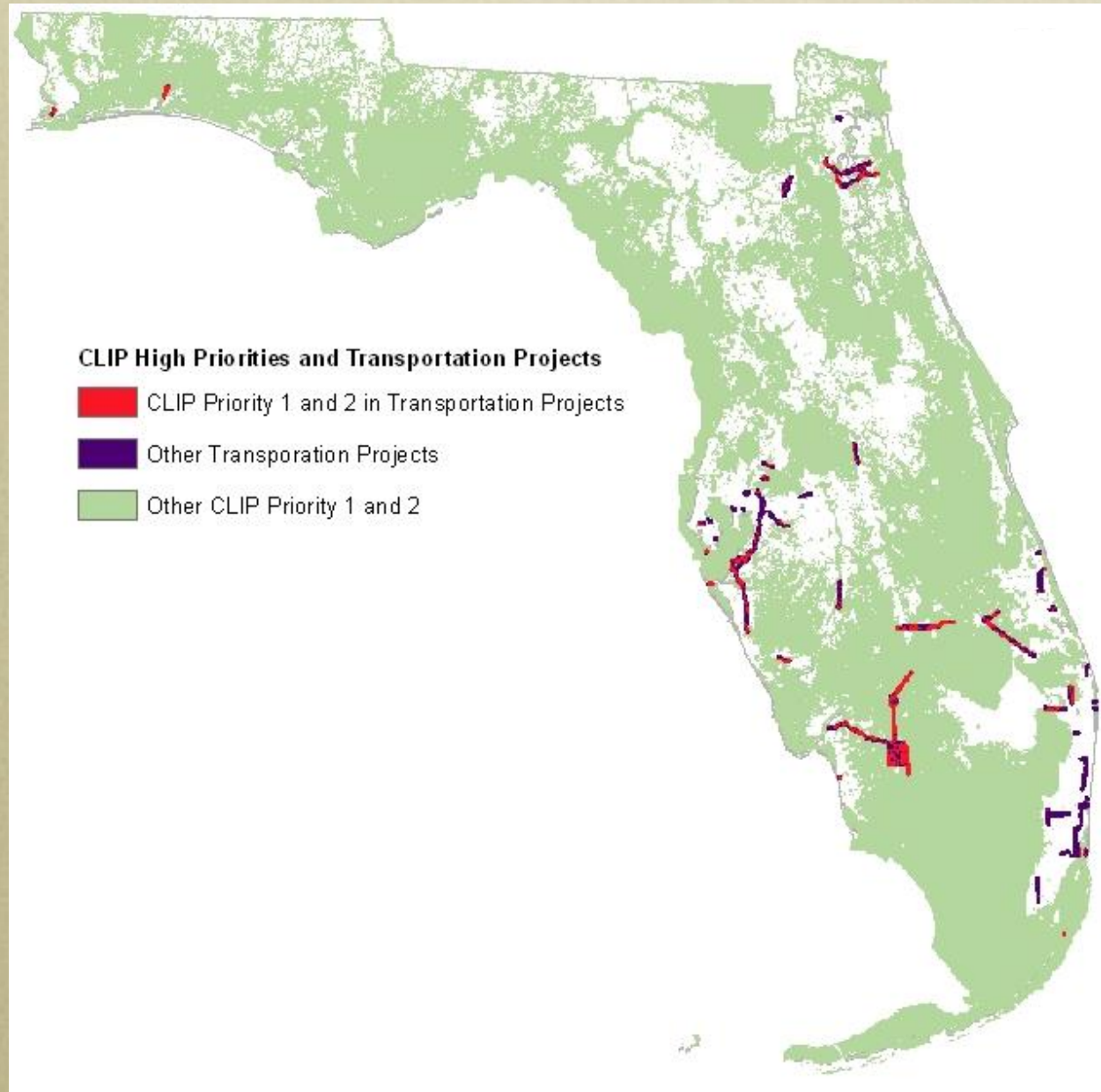
1 & 2 Priorities Overlay Agriculture and Silviculture



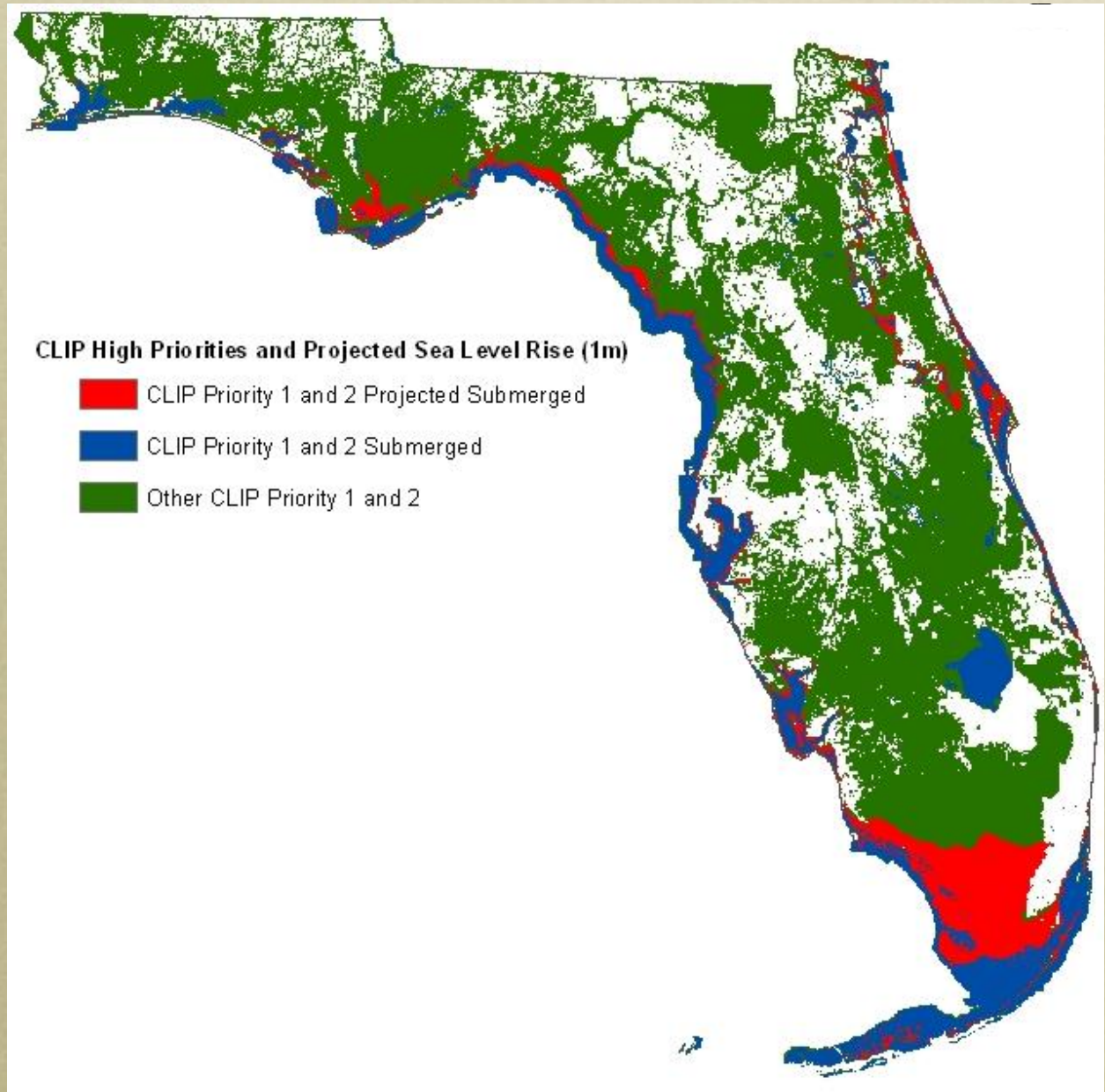
1 & 2 Priorities Overlay 2060 Growth Projection



1 & 2 Priorities FDOT Projects



1 & 2 Priorities 1 meter Sea Level Rise



Cooperative Conservation Blueprint

A Bold vision of Florida's future

- If we can envision our future we can create that future



