

EEL Mission: To Protect and Preserve Biodiversity Through Responsible Stewardship of Brevard County's Natural Resources



Prescribed Fire at the County Level: An Educational Experience

Dean VanderBleek

Brevard County Parks & Rec.
Endangered Lands (EEL) Program

Education is Key to a Successful Program - Start Early!





Whether in the Wildland...



Or the Interface...



Vegetation meant to burn is going to burn.
This fact, in combination with a well-managed and supported prescribed fire program, can be a beautiful thing.



The Resources are out there...

- Start at the local level. Co-operators such as Town, City, and Rural fire departments, as well as the citizens and politicians that support programs and make funding decisions, are critical to building a successful Fire/Fuels Management and Rx Fire program. Workshops and meetings, well in advance of a burn, are essential!
- With local resources in order, work your way up the food chain. State, Federal and Non-Profit resources, cost-sharing and support are available. Highly trained multi-agency Burn Teams seasonally criss-cross the state conducting prescribed fires through MOU's and cooperative agreements.
- The local media is your friend – solicit and “manipulate” television and newspaper exposure for positive and informed coverage of prescribed fire and fuels management goals and achievements (I'm **NOT** talking about CNN!).



Line Up Properly Equipped Fire Crews.
Train Together, Know Resource Capabilities
and Assign Crew Tasks Accordingly.



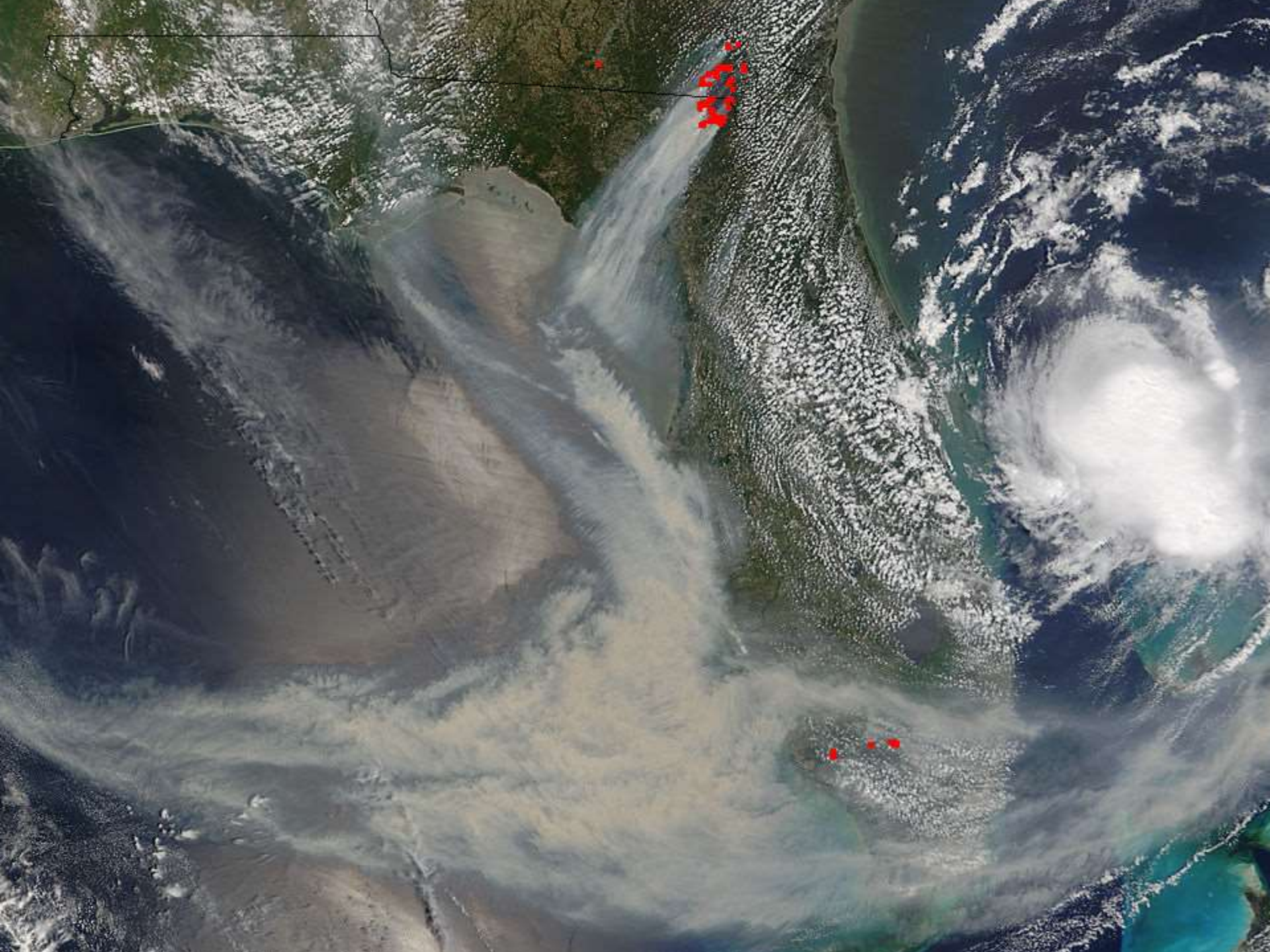
The biggest no-brainer for public support of an Rx Fire Program - **Manage Smoke** so they don't choke! What wind direction (and for how many days) would you prescribe for the unit below?



Old Chinese Proverb: *A meteorologist in the pocket is paramount to good burning.* **Love your regional NWS Fire Weather Forecasters.** Get to know them well. Open a 24/7 dialog regarding fire weather, spot weather forecasts, synoptic and local weather. In return, provide them on-site post-burn fire weather observations (to verify their forecasts) **and they will be your friend for life.**

How critical was a good fire weather forecast for the Bugaboo Fire?





Always watch that Black Cloud on the horizon, no matter how small, to keep it from becoming unmanageable.



Try to Keep it Between the Lines.

Look for lessons learned following each burn. Solicit candid input from fire crew and colleagues with pre/post-burn critiques. A significant incident could end the burn season and may shut down a program forever.



And Practice **K.I.S.P.** – **K**ep **I**t **S**imple:
Planning, **P**reparation, **P**R, and **P**ersistence
will **P**ayoff for your **P**rescribed Fire **P**rogram!



Every Day that your K.I.S.P. and the weather come together is precious... Carpe diem!

