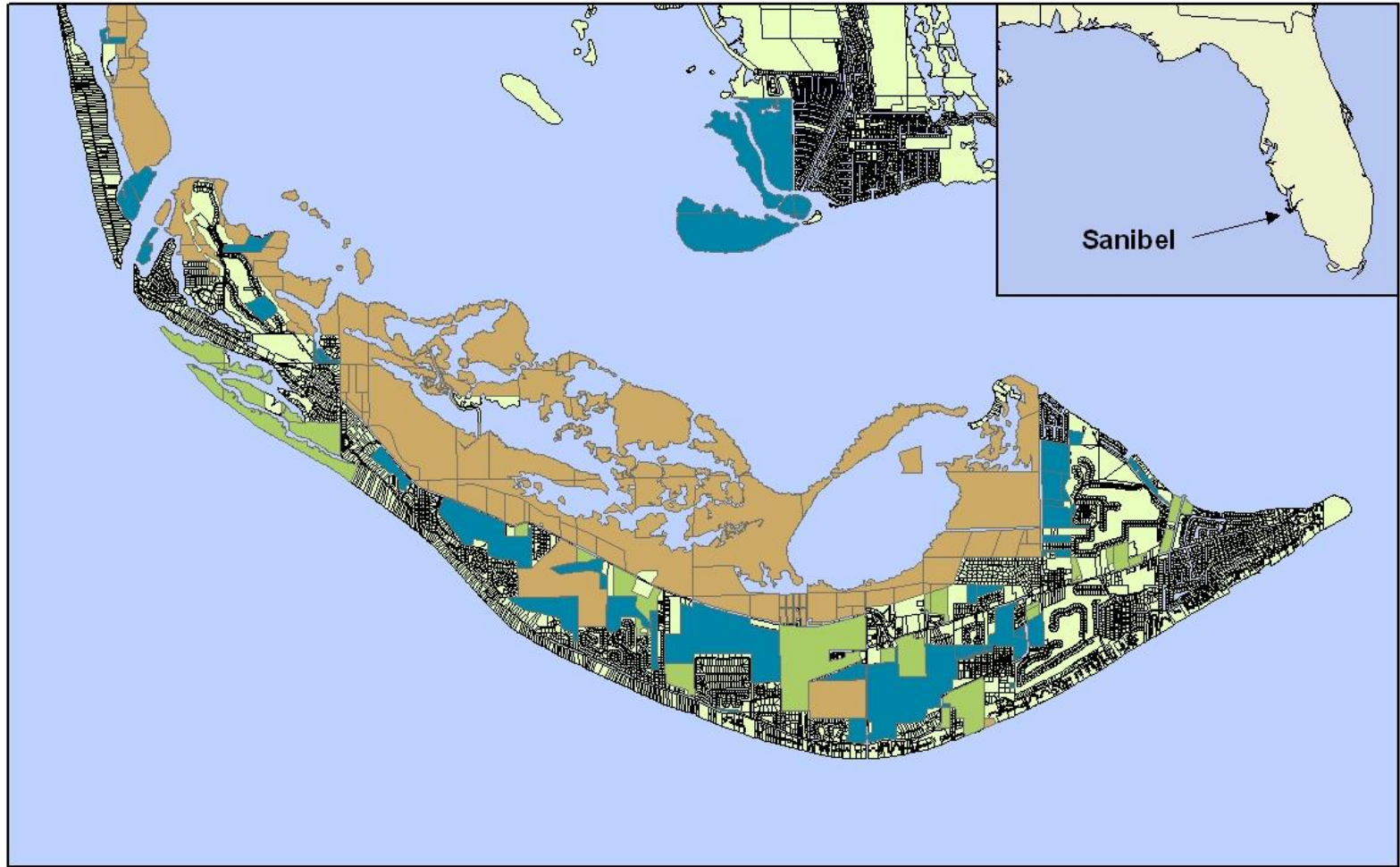





Managing human disturbance to wildlife on an island resort community: recreation and interface



Sanibel Island

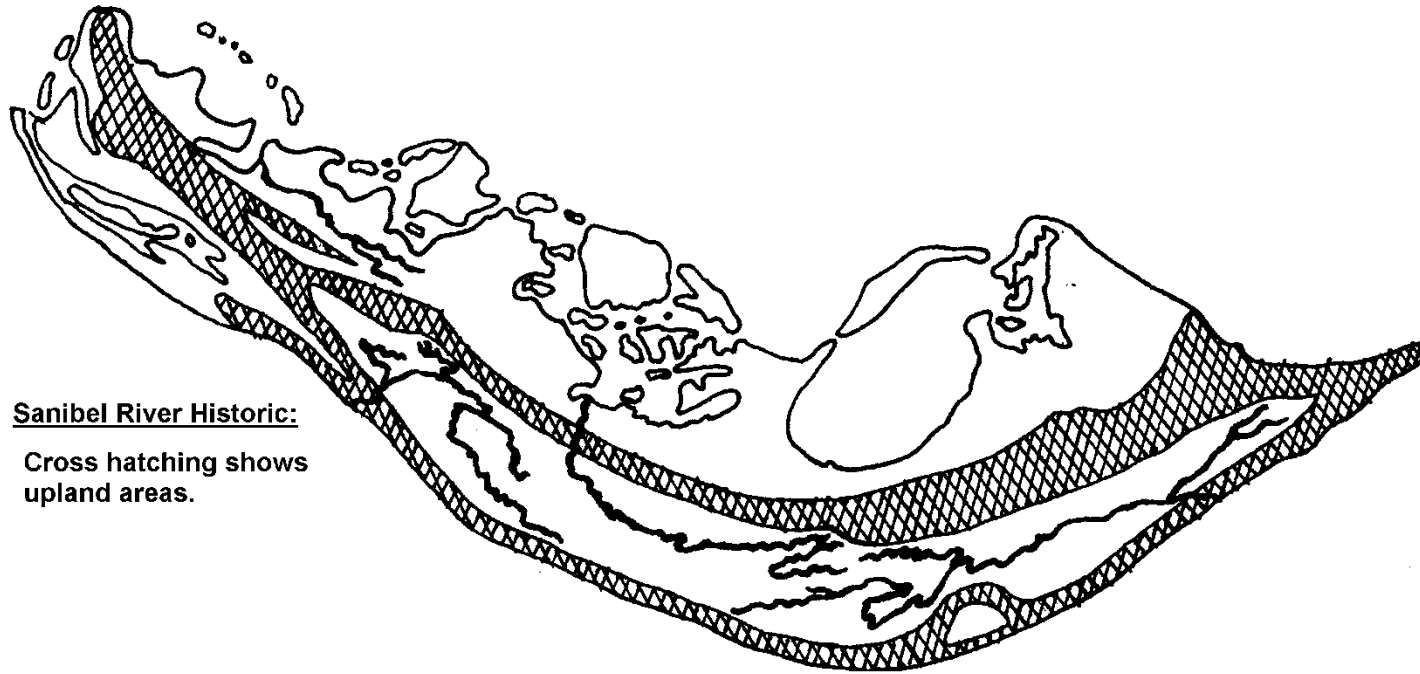


Conservation Lands Ownership

-  Sanibel Captiva Conservation Foundation
-  J.N. "Ding" Darling NWR
-  City of Sanibel



Extensive interior freshwater wetland



Sanibel River Historic:

Cross hatching shows
upland areas.

Freshwater wetlands support diversity

- alligator
- river otter
- freshwater turtles (9 sp.)
- freshwater fish (14 sp.)
- frogs (9 sp.)
- bobcat
- endemic rice rat
- flocks of wading birds



The Island as the Ecosystem



Which of these doesn't fit?



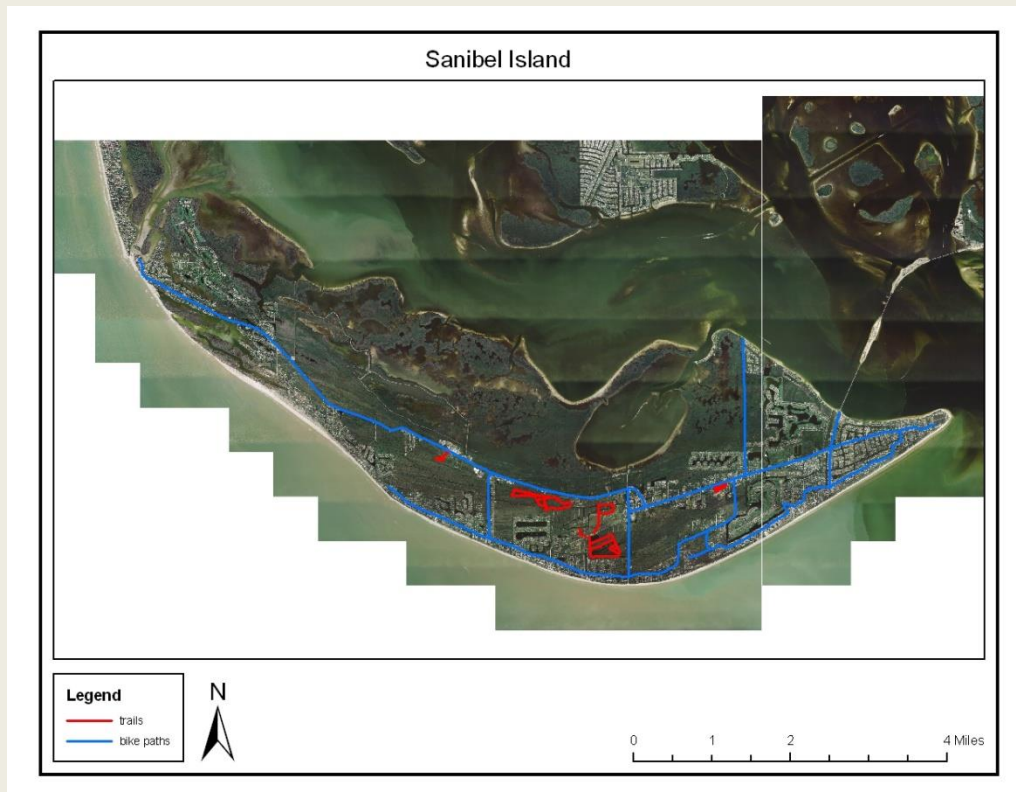
Passive Recreation

- Beach
- Biking
- Boating
- Nature Hiking



Concentrating Impacts

- Most lands are not open to public
- Hiking paths are established at only a few preserves and are typically short loops
- Bike paths are mostly limited to existing roadways



Providing Facilities

- Nature Centers



Providing Facilities

- Trails/Bike paths

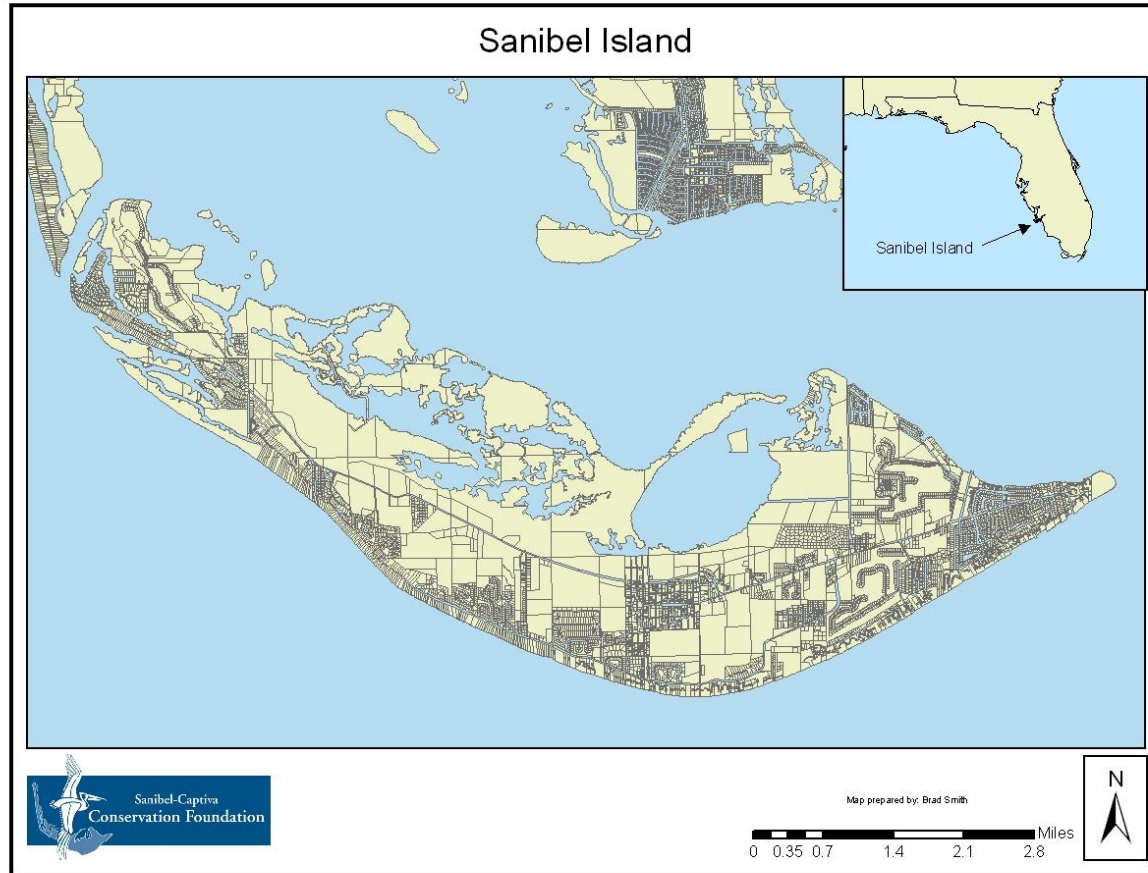


Providing Facilities

- Gazebos
- Towers/Overlooks



Interface Issues



Interface Issues

- Road kill



Interface Issues

- Disturbance to beach nesters and resters



Interface Issues

- Feeding wildlife



Lessons from Sanibel

- Develop partnerships in conservation
- Think holistically
- Sell the vision to the people
- Be ready to adapt
- Education and outreach is a constant
- Success is not guaranteed