

# Mitigation Banking

A Strategic Tool for Land  
Acquisition

# What is Mitigation Banking?

- Authorized in 373.4136, F.S.
- Provides restoration/preservation of private lands
- Stringent financial assurance required
- Discourages frivolous wetland impacts by using true cost of compensation

# What it is not . . .

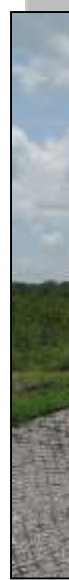
- Not a net loss. Wetland function replaced using Unified Mitigation Assessment Methodology rule.
- Not pseudo-preservation: no logging, no hunting leases, no groves, row crops or sod; no cattle grazing
- Not a license to impact. True price of compensation reflected in cost of credits.

# Mitigation banks can meet public land acquisition needs by:

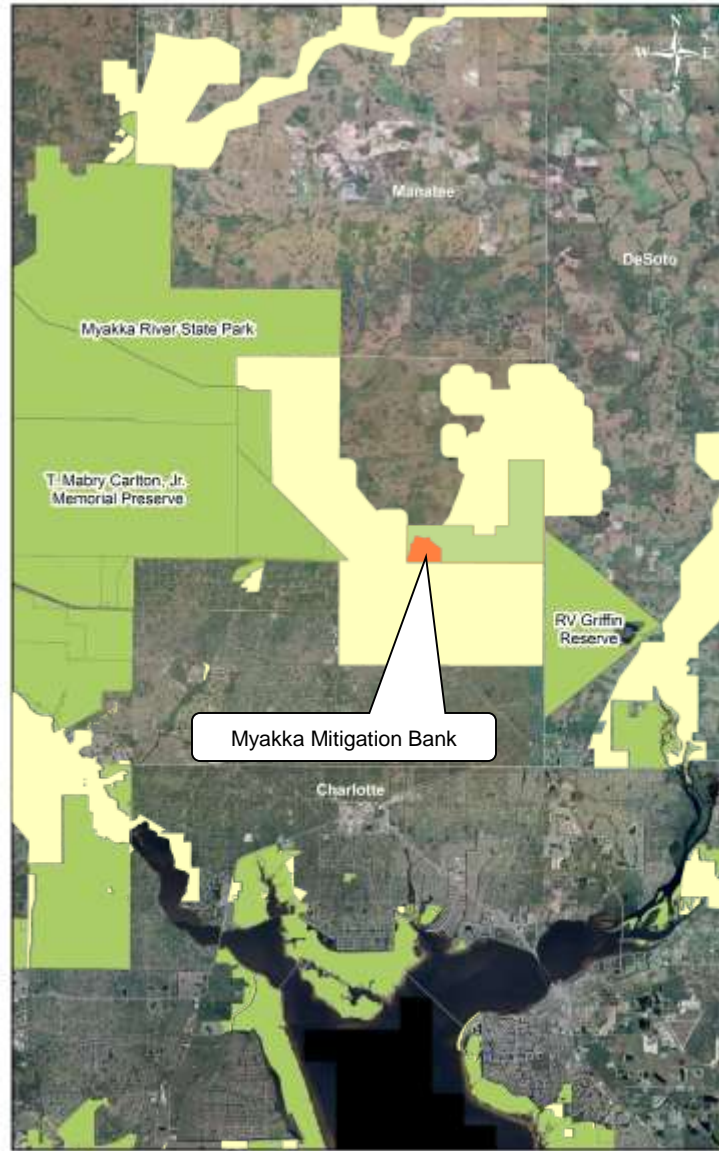
- Restoring and preserving new private lands under *highly restrictive* easements
- Filling critical gaps in wildlife corridors
- Acquiring parcels otherwise unattainable by public agencies
- Using private funds both to acquire and manage land in perpetuity

# Myakka Mitigation Bank

- 380 acre site
- Serves the Myakka River Basin, which includes portions of Manatee, Sarasota, Charlotte, DeSoto, and Hardee Counties
- A critical component of the Peace-Myakka Wildlife Corridor
- Construction has resulted in the conversion of 175 acres of improved pasture and upland forest to wetland habitat



# Myakka Mitigation Bank



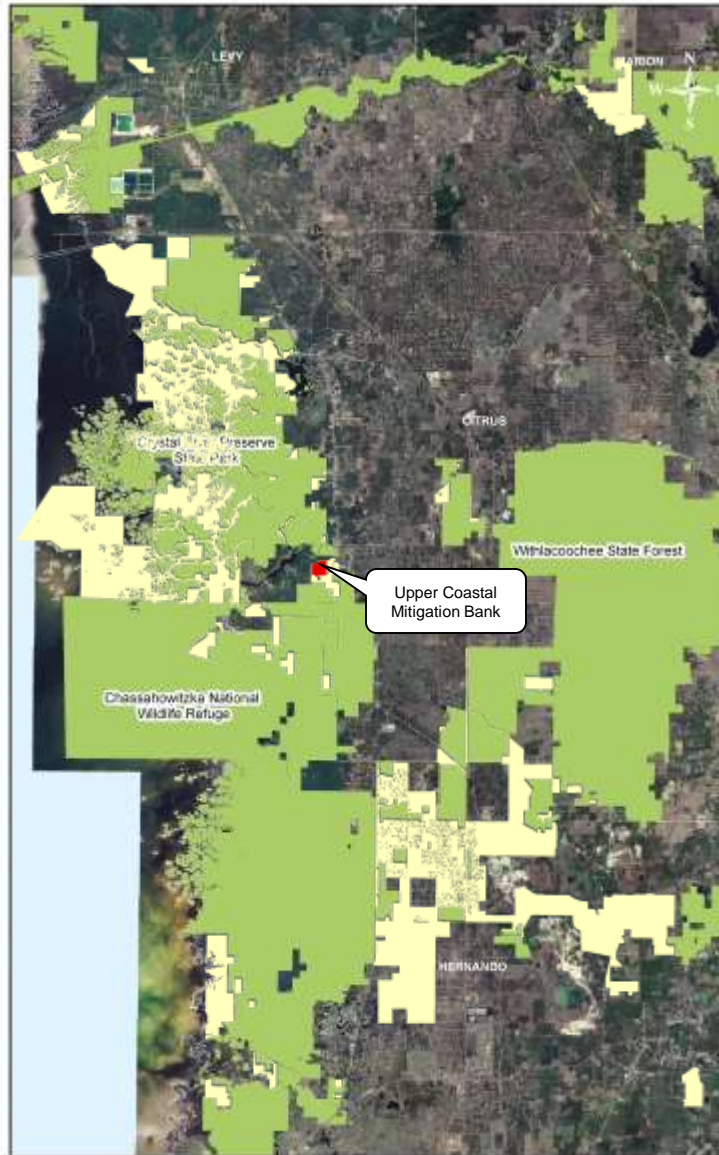
# Upper Coastal Mitigation Bank

- 148.8 acre site
- Serves the Upper Coastal Basin, which includes portions of Citrus, Hernando, Pasco, Hillsborough, and Pinellas Counties
- Identified as one of five key connections in a regional preserve complex
- Stepping stone site between two Florida Black Bear ranges
- Protection of water quality in the Homosassa River and on-site spring run





# Upper Coastal Mitigation Bank





# Peace River Mitigation Bank

- 487 acre site
- Serves the Peace River Basin, which includes portions of Polk, Hardee, DeSoto, Highlands, Charlotte, Glades, Manatee, and Hillsborough Counties
- Part of a targeted preservation corridor that stretches from Lake Hancock to the Charlotte Harbor Estuary
- 2.5 miles of Peace River frontage



# Peace River Mitigation Bank

