



**Mike Long, Director**

# **Division of Forestry Land Management**

## **Public Land Acquisition & Management Partnership Conference**

**Florida Department of Agriculture  
and Consumer Services**



**Charles H. Bronson,  
Commissioner**

# Forest and Resource Protection Program



## Our Mission...

To protect Florida and its citizens from the dangers of wildland fire and manage the forest resources through a stewardship ethic to assure they are available for future generations.



# Two Forestry Budget Entities:

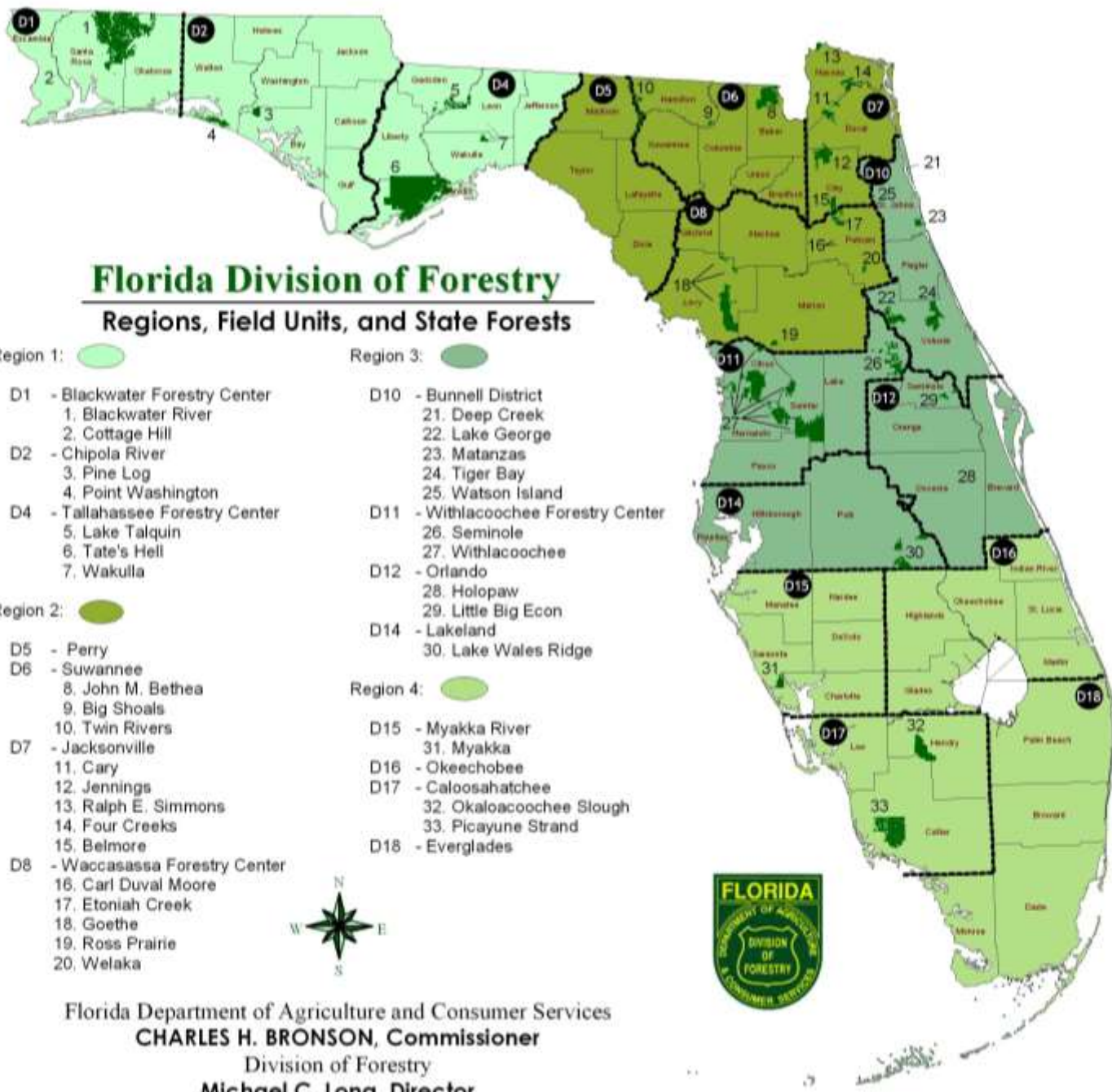
- ◆ Fire Prevention and Management

- ◆ Land Management

## Multi-functional

Personnel, equipment and facilities routinely support both Fire and Land budget entities.





## Florida Division of Forestry

### Regions, Field Units, and State Forests

- |  |   |
|--|---|
| Region 1:                                   | Region 3:                        |
| D1 - Blackwater Forestry Center<br>1. Blackwater River<br>2. Cottage Hill  | D10 - Bunnell District<br>21. Deep Creek<br>22. Lake George<br>23. Matanzas<br>24. Tiger Bay<br>25. Watson Island |
| D2 - Chipola River<br>3. Pine Log<br>4. Point Washington   | D11 - Withlacoochee Forestry Center<br>26. Seminole<br>27. Withlacoochee  |
| D4 - Tallahassee Forestry Center<br>5. Lake Talquin<br>6. Tate's Hell<br>7. Wakulla  | D12 - Orlando<br>28. Holopaw<br>29. Little Big Econ   |
| Region 2:                                   | D14 - Lakeland<br>30. Lake Wales Ridge  |
| D5 - Perry   | Region 4:                        |
| D6 - Suwannee<br>8. John M. Bethea<br>9. Big Shoals<br>10. Twin Rivers   | D15 - Myakka River<br>31. Myakka  |
| D7 - Jacksonville<br>11. Cary<br>12. Jennings<br>13. Ralph E. Simmons<br>14. Four Creeks<br>15. Belmore                      | D16 - Okeechobee<br>32. Okaloacoochee Slough<br>33. Picayune Strand   |
| D8 - Waccasassa Forestry Center<br>16. Carl Duval Moore<br>17. Etoniah Creek<br>18. Goethe<br>19. Ross Prairie<br>20. Welaka | D17 - Caloosahatchee<br>32. Okaloacoochee Slough<br>33. Picayune Strand   |
|  | D18 - Everglades  |



Florida Department of Agriculture and Consumer Services  
**CHARLES H. BRONSON, Commissioner**  
 Division of Forestry  
**Michael C. Long, Director**  
 November 2006

# State Forests Management

Multiple Use Management –  
Restoration – Recreation – Natural  
Resource Conservation – Wildland Fire  
Protection



# Multiple Use Management

## Chapter 253.034 F.S.

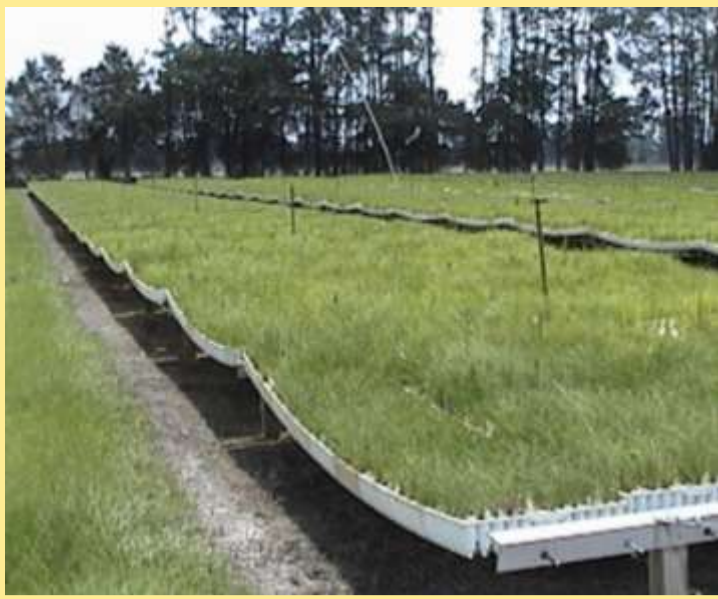
“Multiple use” means the harmonious and cooperative management of timber, wildlife, recreation, forage, archeological and historic sites, or water resources so that they are utilized in the combination that will best serve the people of the state.





A  
C  
t  
i  
v  
i  
t  
i  
e  
s





# A C T I V I T I E S





# A C t i v i t i e s

# Public Access







# STATE FOREST PUBLIC INPUT PROCESS

- Established State Forest Liaison Committees
- Committees meet twice a year to facilitate communication and dialogue between the State Forest Community and the Division of Forestry
- Management (Plan) Advisory Group Hearing & Meeting



# Forest Products

- Timber
- Grazing Lease
- Fuelwood
- Apiary
- Palm Fronds
- Cabbage Palms
- Citrus Lease

# Forest Restoration





# Objectives of Prescribed Fire

Over 99,890 Acres Prescribed Burned

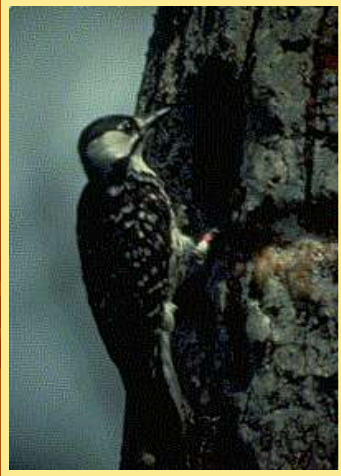
During FY 2006-07 on State Forests

## OBJECTIVES:

- Reduce Hazardous Fuels
- Maintain and Restore Natural Communities
- Perpetuate Fire-Dependent Ecosystems
- Enhance Listed Species Habitat
- Improve Appearance and Access
- Improve Wildlife Habitat
- Reduce Competing Vegetation
- Control Disease and Pests
- Recycle Nutrients



# ENDANGERED, THREATENED AND SENSITIVE SPECIES



- Increasing red-cockaded woodpecker populations
- Managing for scrub jays
- Surveying for gopher tortoises
- Plant Conservation Program
- Managing habitat for bears, panthers and quail





# **Invasive Plant Control**

- **Accomplishments:**
  - **30 State Forests surveyed since FY 04-05**
  - **14,755 acres treated in FY 06-07**
- **Examples of Species Treated:**
  - **Cogan Grass**
  - **Japanese Climbing Fern**
  - **Brazilian Pepper**
  - **Melaleuca**
  - **Tropical Soda Apple**
  - **Old World Climbing Fern**

# Dispersed Outdoor Recreation



- **Space**

- **Solitude**

- **Self-reliance**









# Goethe State Forest

CHECKLIST OF BIRDS



Red-collared Woodpecker

Florida Department of Agriculture and Consumer Services  
Charles H. Bronson, Commissioner

Division of Forestry

# Jennings State Forest

CHECKLIST OF BIRDS



Downy Woodpecker

Division of Forestry  
Florida Department of  
Agriculture and Consumer Services  
Charles H. Bronson, Commissioner

# Seminole State Forest

CHECKLIST OF BIRDS



Florida Scrub-wren

Division of Forestry  
Florida Department of  
Agriculture and Consumer Services  
Charles H. Bronson, Commissioner

# Ralph E. Simmons Memorial State Forest

CHECKLIST OF BIRDS



Great Crested Flycatcher

Florida Department of Agriculture and Consumer Services  
Charles H. Bronson, Commissioner  
Division of Forestry

# Lake Wales Ridge State Forest

CHECKLIST OF BIRDS



Blue Jay  
Florida Department of  
Agriculture and Consumer Services  
Charles H. Bronson, Commissioner

# Lake Talquin State Forest

CHECKLIST OF BIRDS



Red-bellied Woodpecker

Florida Department of Agriculture and Consumer Services  
Charles H. Bronson, Commissioner

Division of Forestry



# Recreational Trails

<u>Trails</u>	<u>Miles</u>
Hiking	395
Equestrian	525
Biking	245
OHV	<u>154</u>
Total	1,319



# OHV Recreation Program





# Camping Opportunities

547 Primitive Sites  
506 Improved Sites  
427 Hunt Camp Sites



# Open to Public Hunting



**92% of DOF Managed State Forests are  
in a Wildlife Management Area**

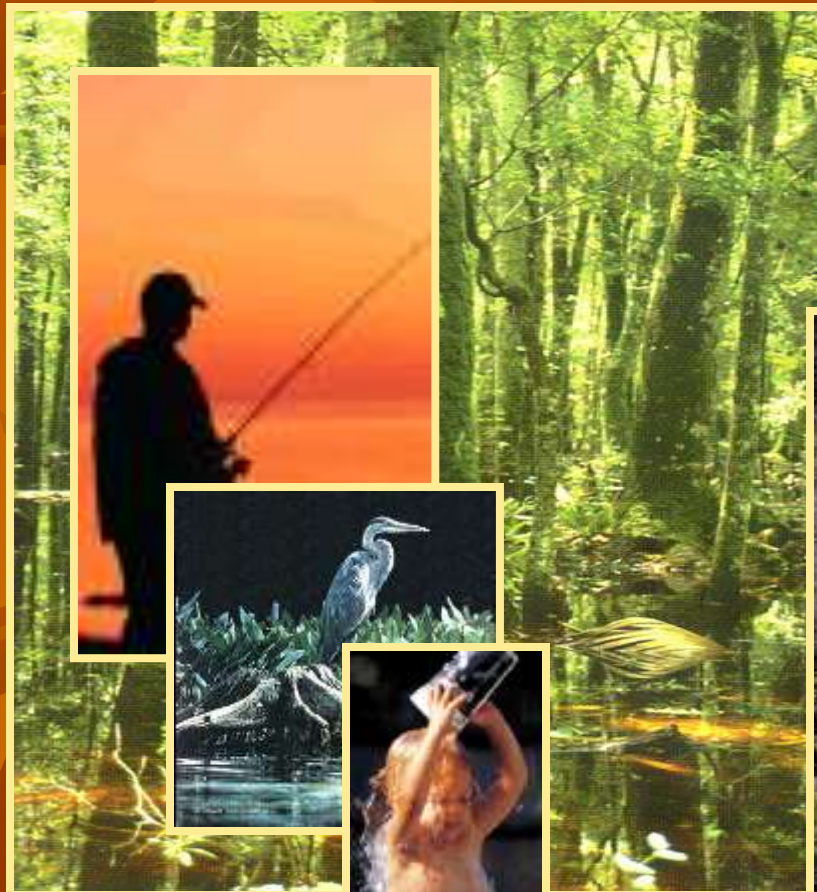


# Educational Forests

Facilities in place...



# Wetland Restoration Program





## Re-establishing Natural Flowpaths



## Removal of Exotic, Invasive Plants



## Managing/Eliminating Ditch Flows

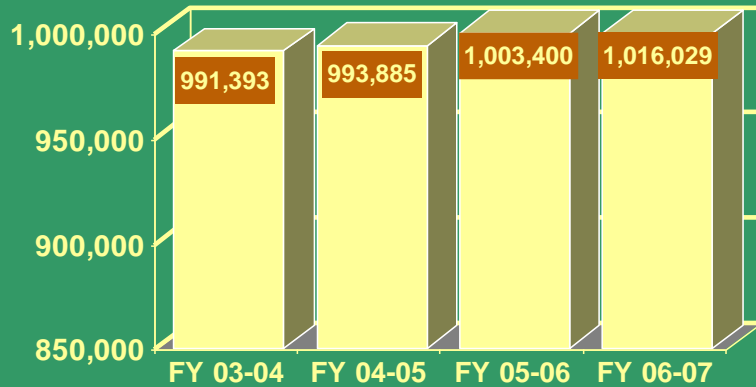


## Re-hydrating Drained Wetlands

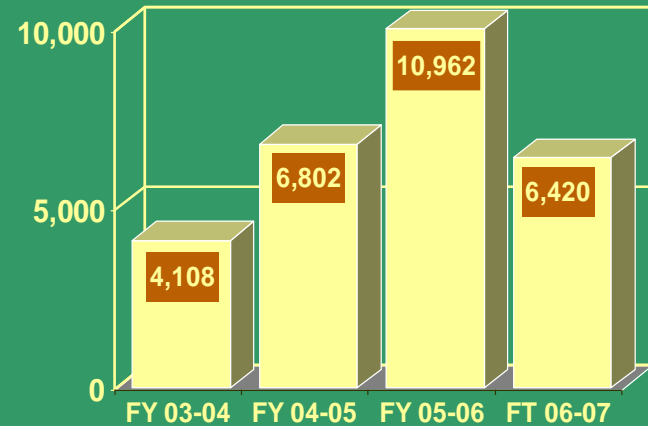


# Land Management Accomplishments

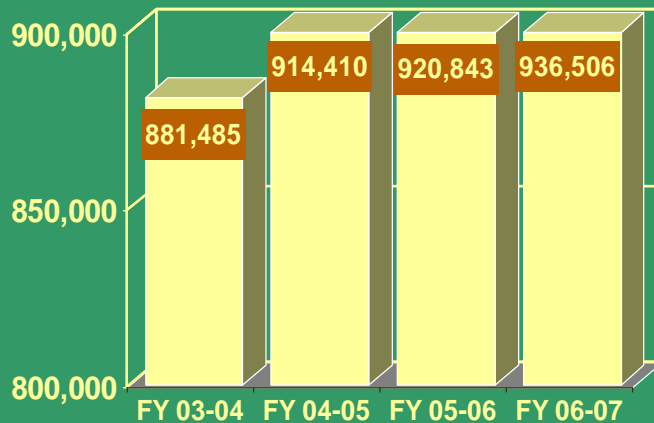
■ ACRES OF STATE FORESTS MANAGED



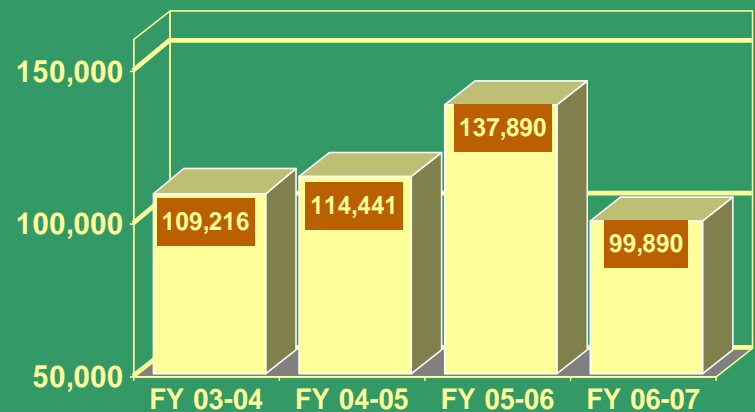
■ ACRES OF STATE FORESTS REFORESTED



■ ACRES OF STATE FORESTS OPEN TO HUNTING

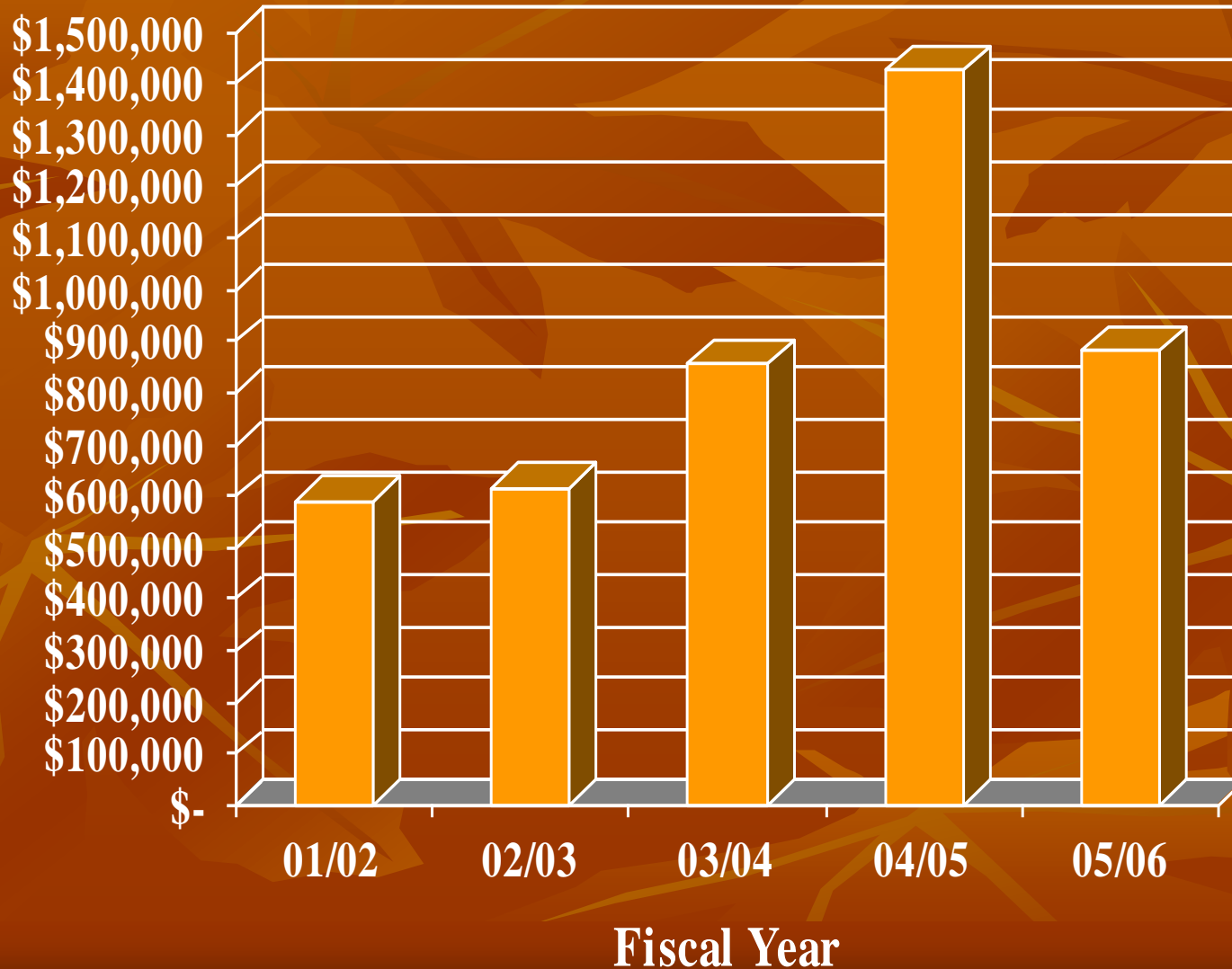


■ ACRES OF STATE FOREST PRESCRIBED BURNS





# 15% Annual Payment To Counties For the Last 5 Fiscal Years



# Emerging Issues on State Lands

*Linear Facilities (roads and utilities)*

*Requests for Single Use and/or Special Use Conveyance*

*Water Supply Development Projects*

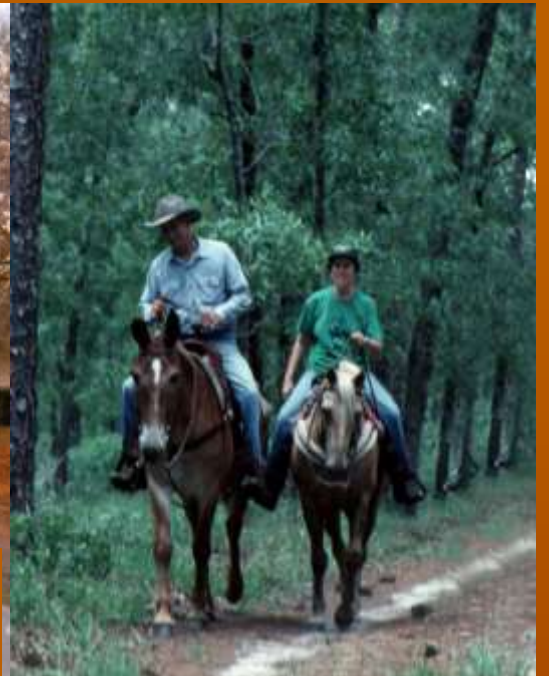
*New and Emerging Invasive Non-Native Species on the Forest Landscape*

*Boundary Encroachments*

*New Air Quality Rules Impacts on Land Management Activities*







QUESTIONS?

