

# Management Planning



## **An Approach from SRWMD**

**Bob Heeke, Sr. Land Resources Manager**

**Presented at PLAM Conference 2007**

# Management Plans

---



- ❑ Describe Current Conditions
- ❑ Describe Management Methods
- ❑ Describe Goals
- ❑ Communicate to Audience

# Who is the Audience?

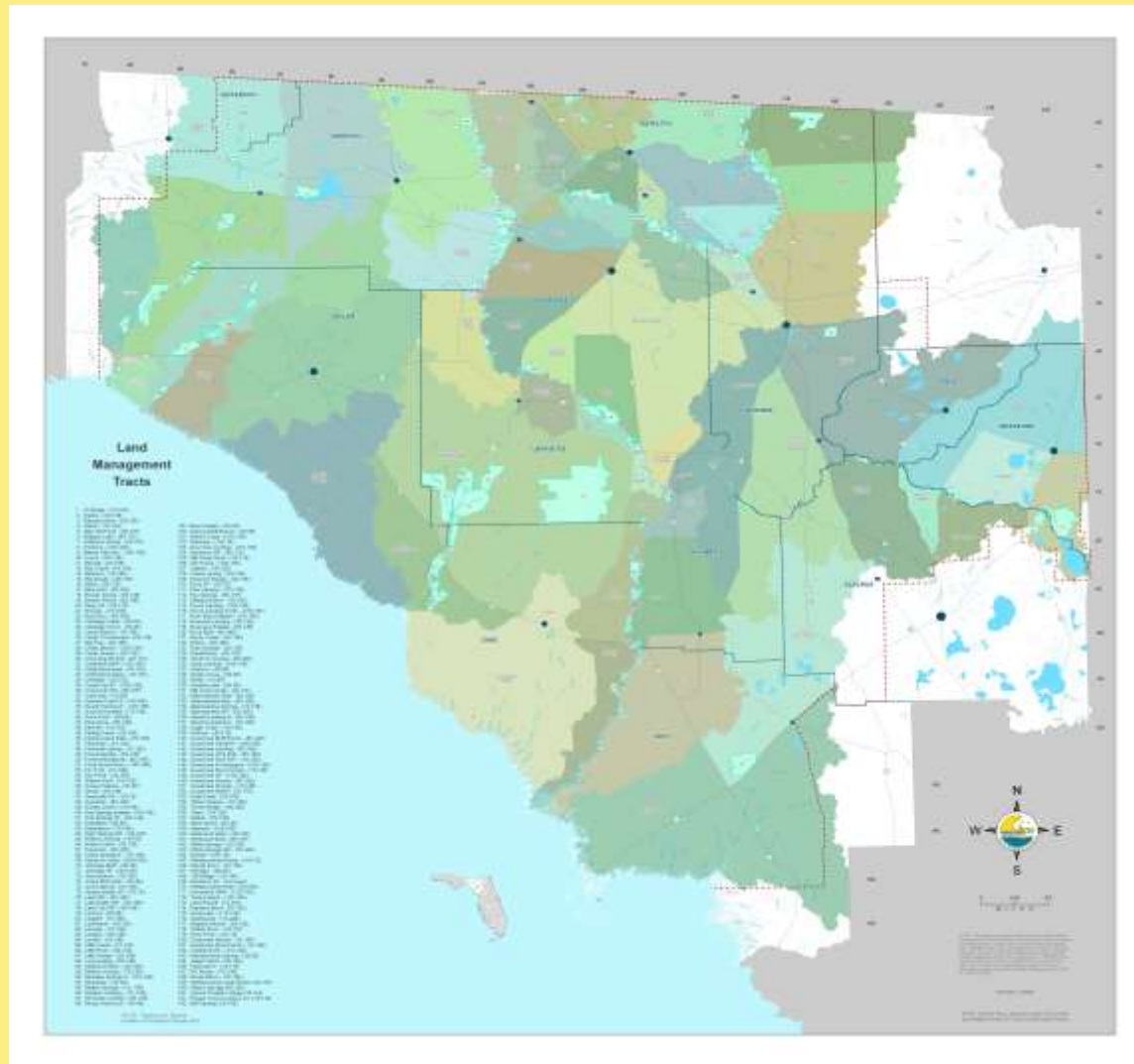
---

- ❑ Staff
- ❑ General Public
- ❑ Land Management Review Team
- ❑ Interested Parties



# The Challenge

---



# The Challenge

---

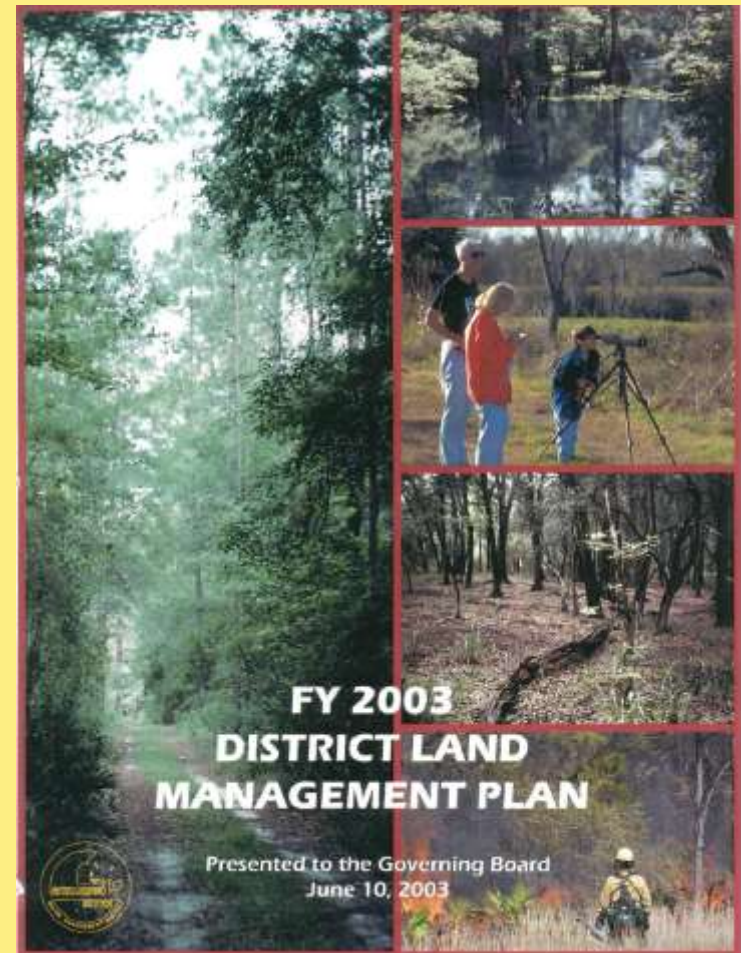
- How to make the Plan usable by the folks doing the day to day management on the ground.





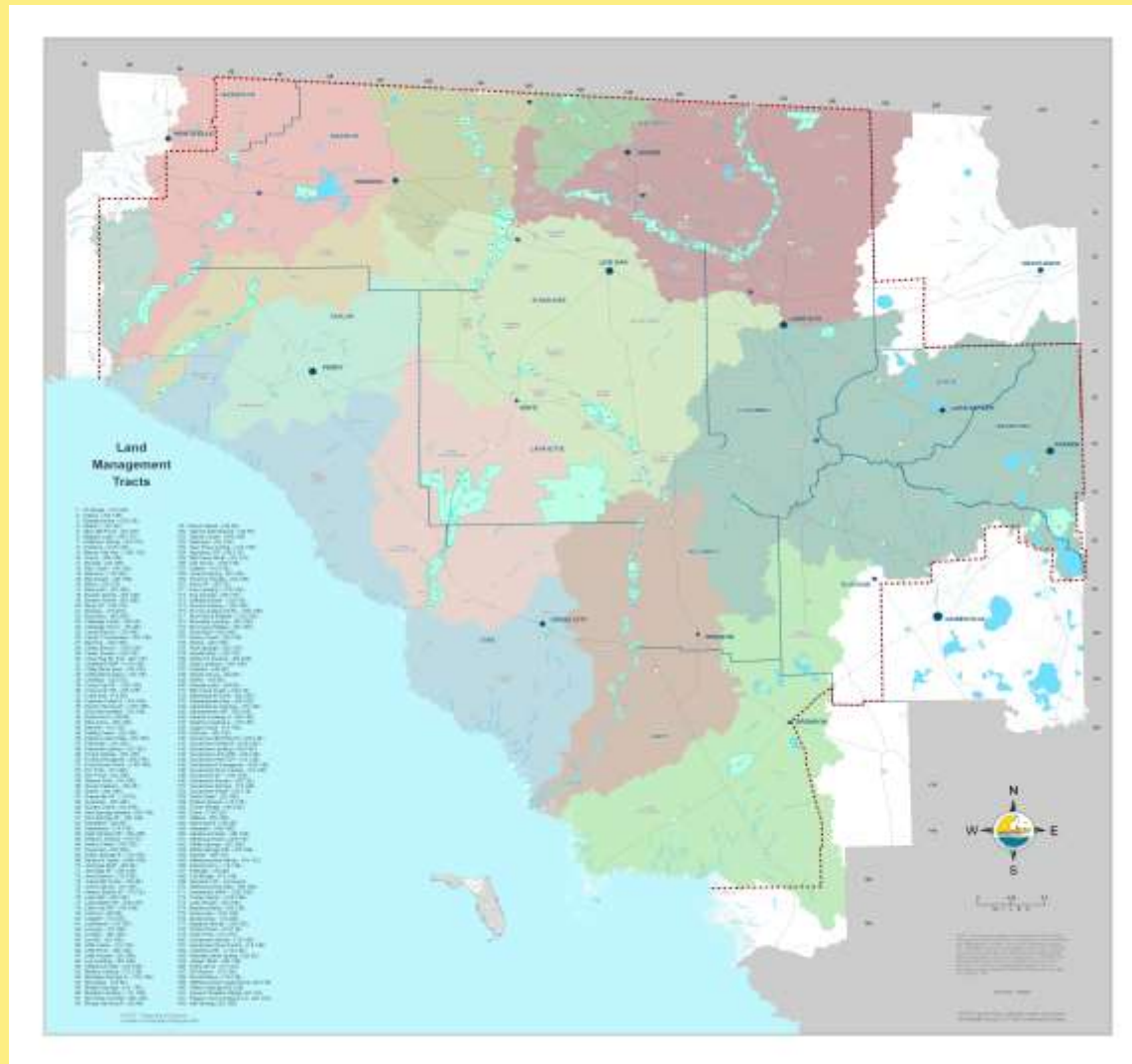
# The Suwannee Approach

- District Land Management Plan
  - Incorporates Policies and Procedures approved by Governing Board.
  - Outlines general conditions of lands by surfacewater basins.
  - Update on 5-year interval.



# Plan at Basin Level

---



# The Suwannee Approach

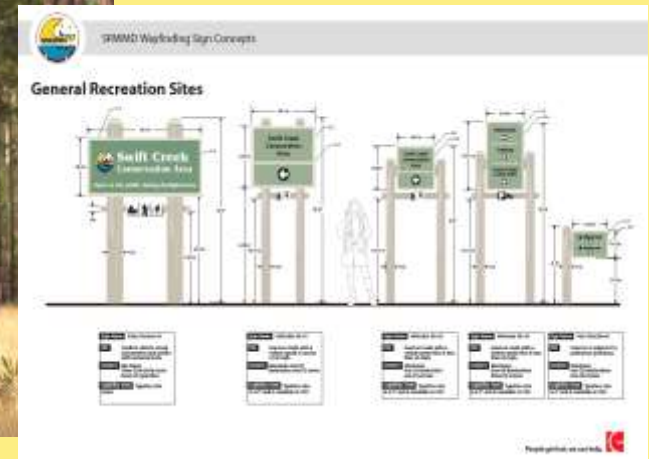
---

- Excellence in Land Management Program
  - Protect, enhance and/or restore *natural, archaeological, and historical resources* on lands owned or influenced by the District.
  - Provide opportunities for *compatible resource-based recreation* and education.
  - Coordinate with *public and private stakeholders* in the management of District lands.
  - Manage District lands in an *efficient, cost-effective* manner.



# The Suwannee Approach

- Quantifiable Standards
  - Facilities
  - Operations
  - Desired Future Conditions
- Certification



# The Suwannee Approach

---

## □ Comprehensive Use of GIS

### ■ Inventory

- Vegetation, floodplains, rare species, timber, natural communities, facilities, real estate interest ....

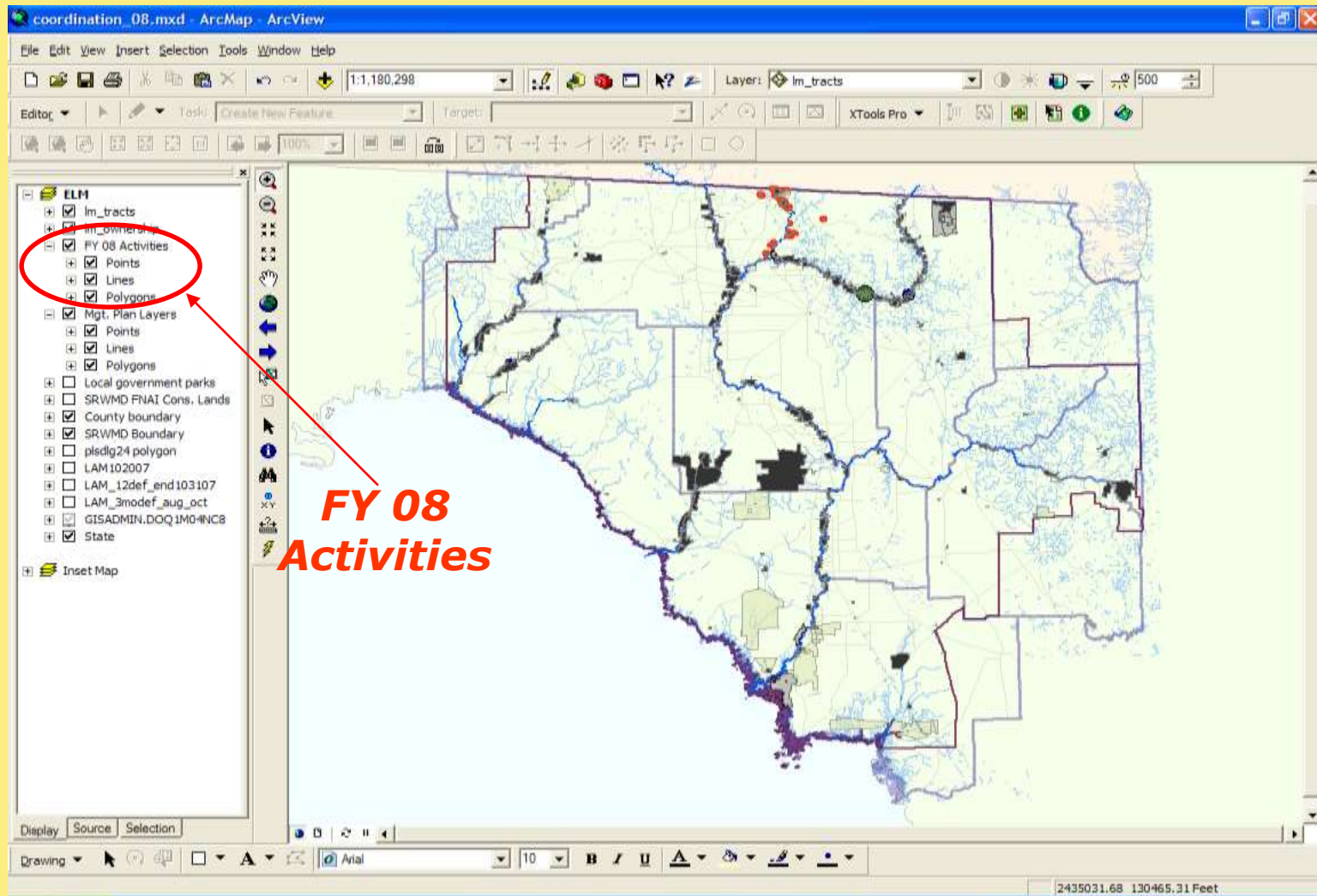
### ■ Planning

- Integrates all current data, identifies spatial conflicts, documents knowledge at time of implementation, identify specific work areas, show change over time ....

### ■ Audit

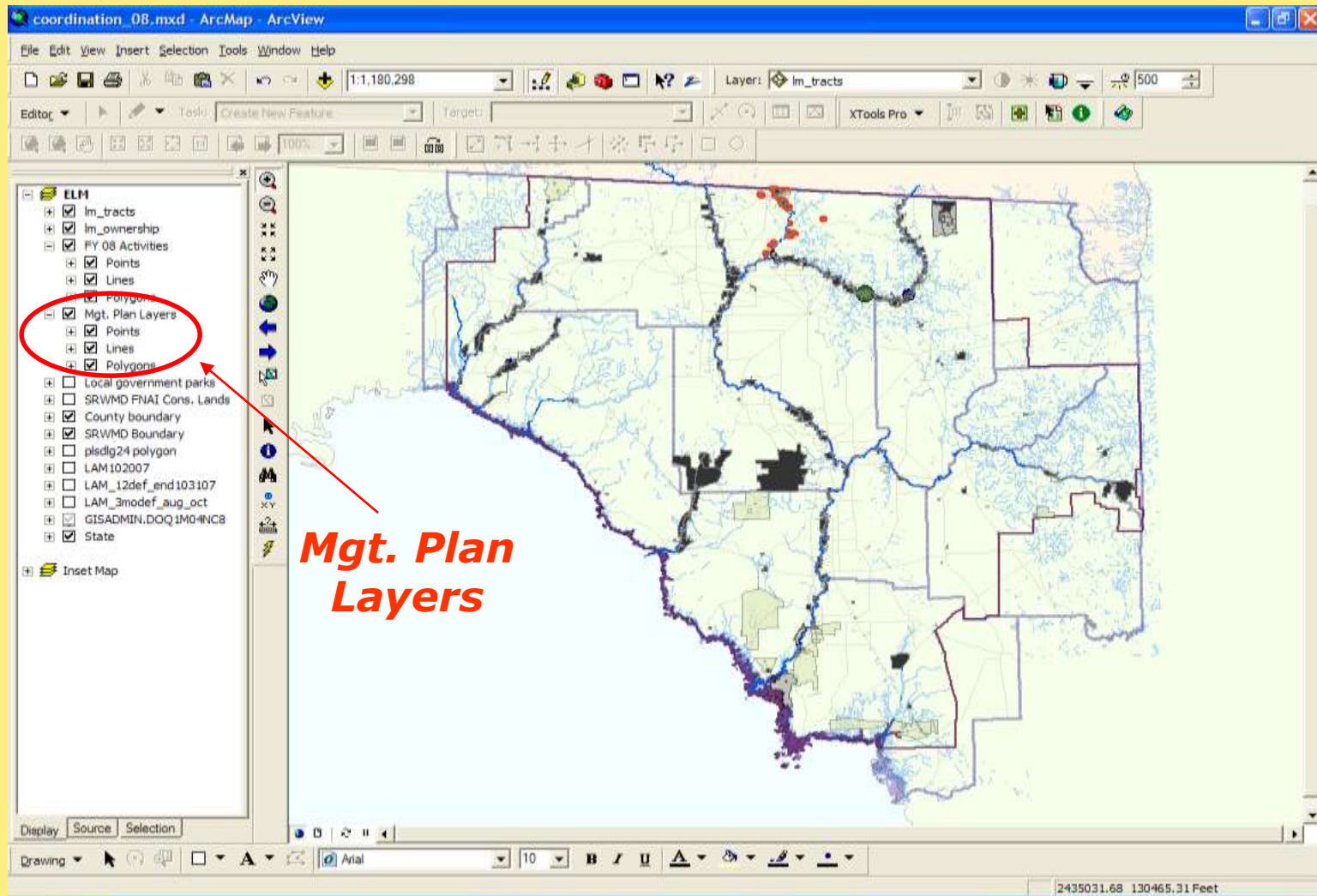
- Review specific locations, identify high risk sites, integrate photos.

# The Suwannee Approach





# The Suwannee Approach



# The Suwannee Approach

The screenshot displays the ArcMap interface with the following components:

- Title Bar:** coordination\_08.mxd - ArcMap - ArcView
- Menu Bar:** File Edit View Insert Selection Tools Window Help
- Toolbars:** Standard, Editor, and XTools Pro.
- Layers Panel (ELM):**
  - Im\_tracts
  - Im\_ownership
  - FY 08 Activities
    - Points
    - Lines
    - Polygons
  - Mgt. Plan Layers
    - Points
    - Lines
    - Polygons
  - Local government parks
  - SRWMD FNAI Cons. Lands
  - County boundary
  - SRWMD Boundary
  - plsdg24 polygon
  - LAM102007
  - LAM\_12def\_end103107
  - LAM\_3modef\_aug\_oct
  - GISADMIN.DOQ1M04NCB
  - State
- Inset Map:** A smaller map view in the bottom left corner.
- Identify Window:** A pop-up window titled "Identify" showing details for a selected feature from the "Natural communities" layer.

Field	Value
FID	2010
Shape	Polygon
FNAI_CODE	UMF
TRACT	Gar Pond
FIRE	25-100
Perimeter	5579.085711
Area	836398.805554
Acres	19.201075
PINE	Y
- Status Bar:** 2527527.39 -483957.29 Feet



# The Suwannee Approach

---

## ELM Annual Scorecard

- Regular Communication
- Identifies Areas of Success
- Identifies Areas that need attention
- Trends

# The Suwannee Approach

---

## □ Benefits

- Consistent communication and analysis at various scales and over time
- Reduced paper; available on your desktop
- More specific, updates
- Flexible
- Reduced writing requirements

# The Suwannee Approach

---

## □ Concerns

- Is it effective communication?
- Staff acceptance, learn GIS skills
- Too much dependence on office answers?

“A good plan today is better than a perfect plan tomorrow.”

George S. Patton

---

