



**&
an Alternative Future”**

**Linda W. Chapin
Director
Metropolitan Center of Regional Studies
University of Central Florida**

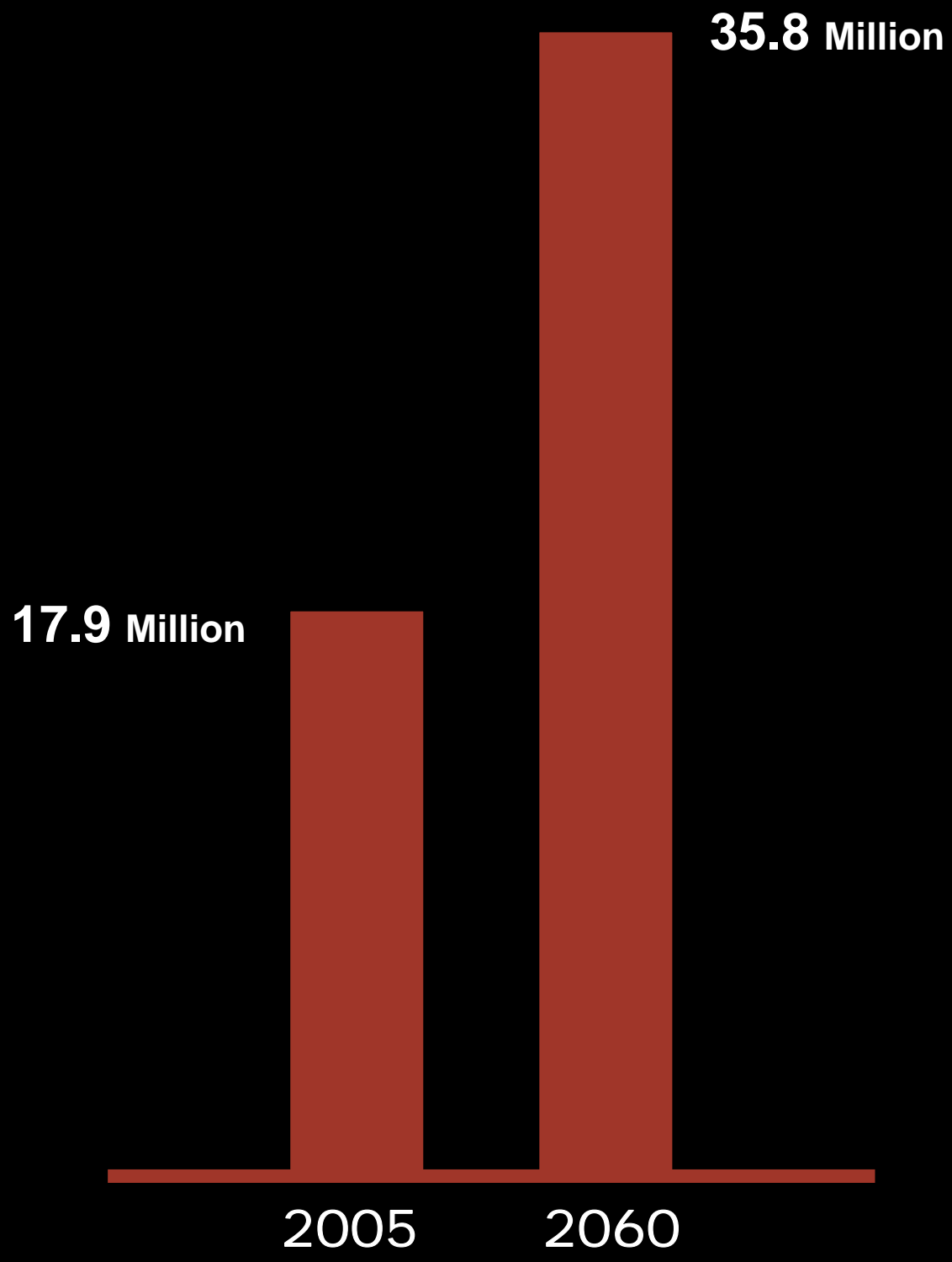
December 6, 2007

Florida Public Lands Acquisition & Management



FLO RIDA 2060

A Research Project of 1000 Friends of Florida



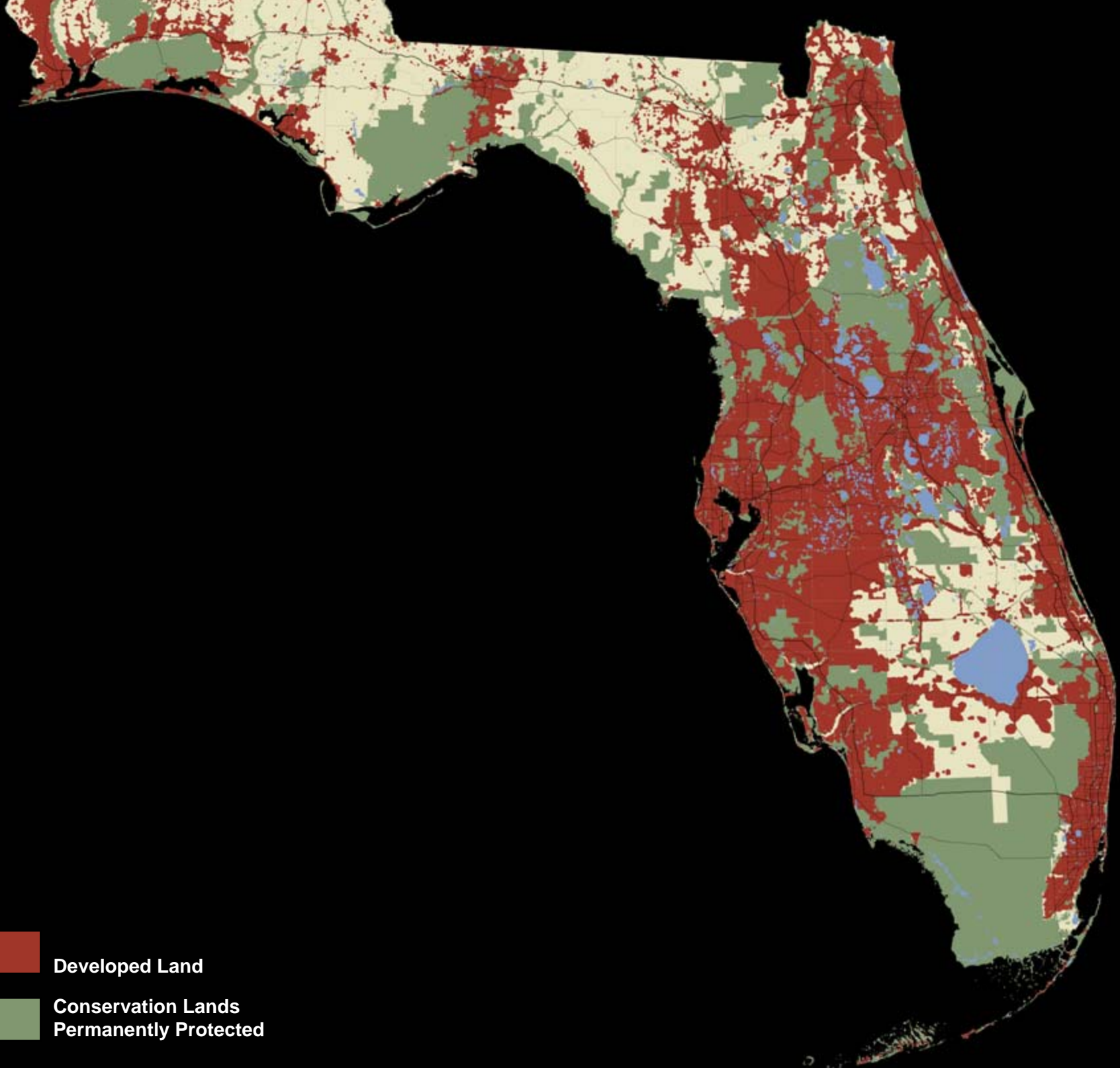


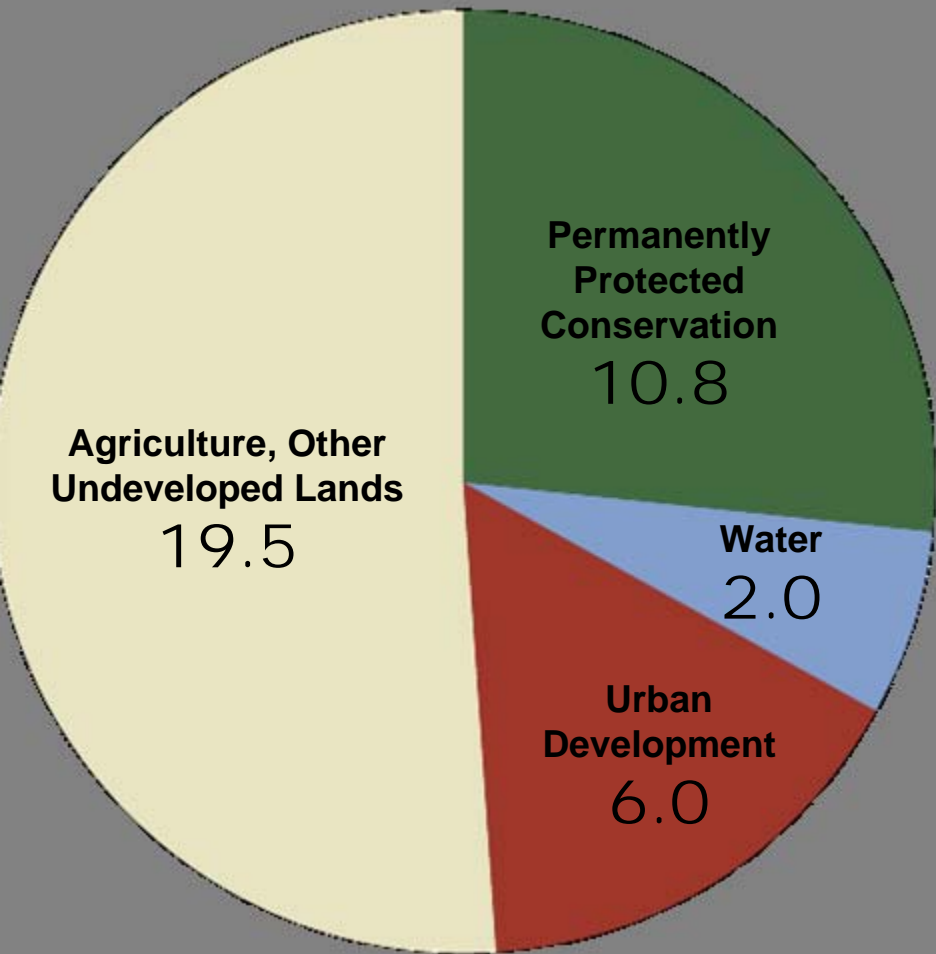


Developed Land

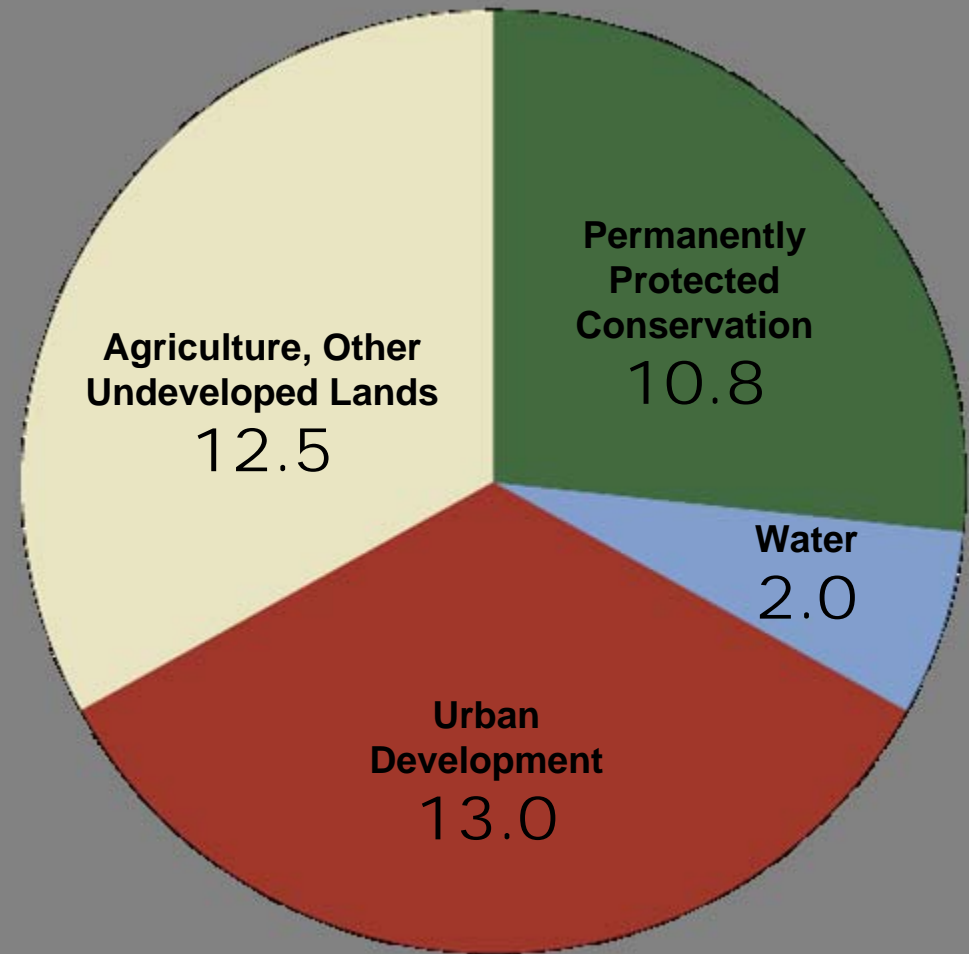


Conservation Lands
Permanently Protected



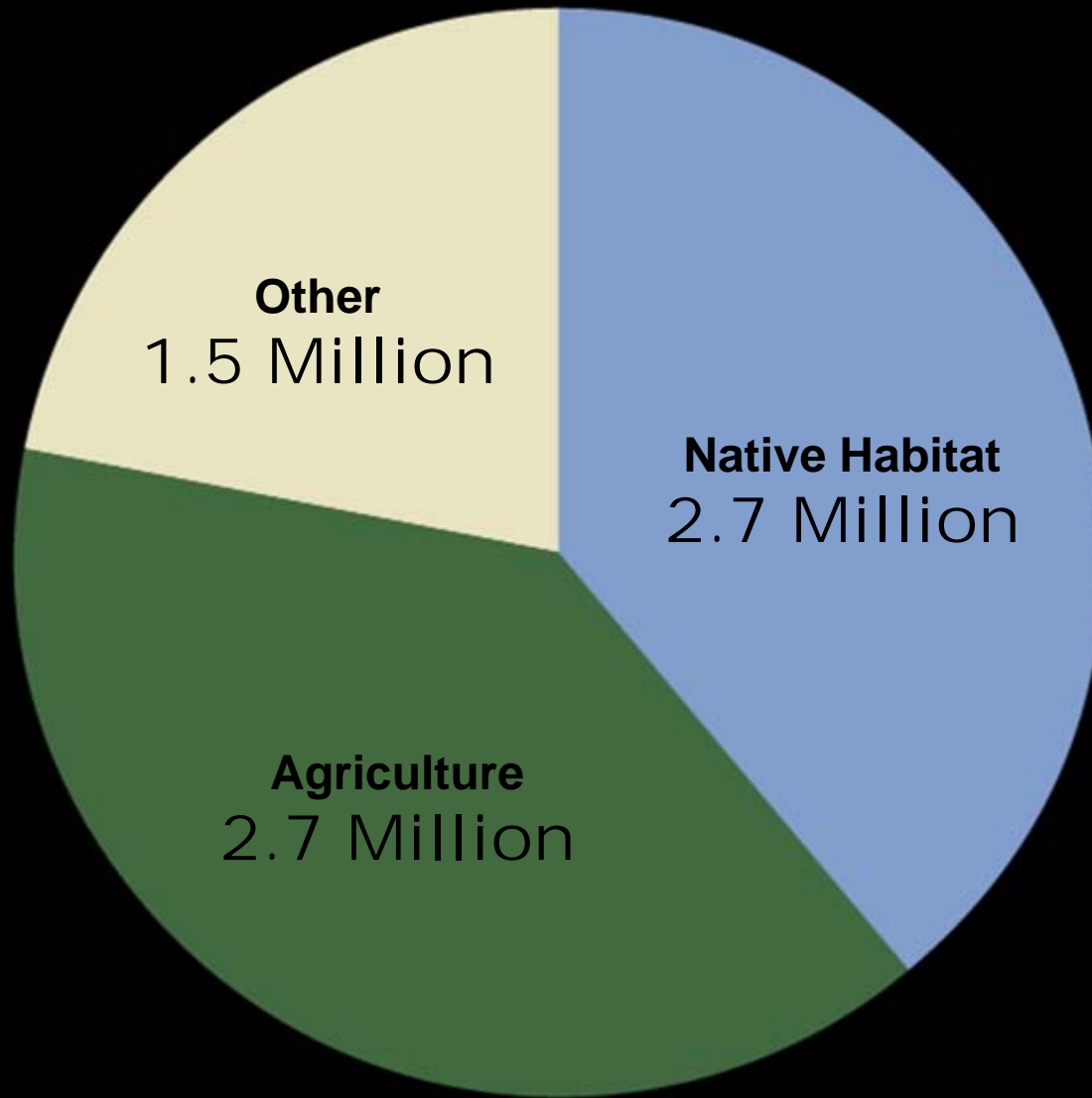


2005



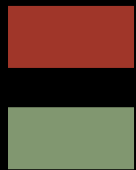
2060

Total: 38.3 Million Acres

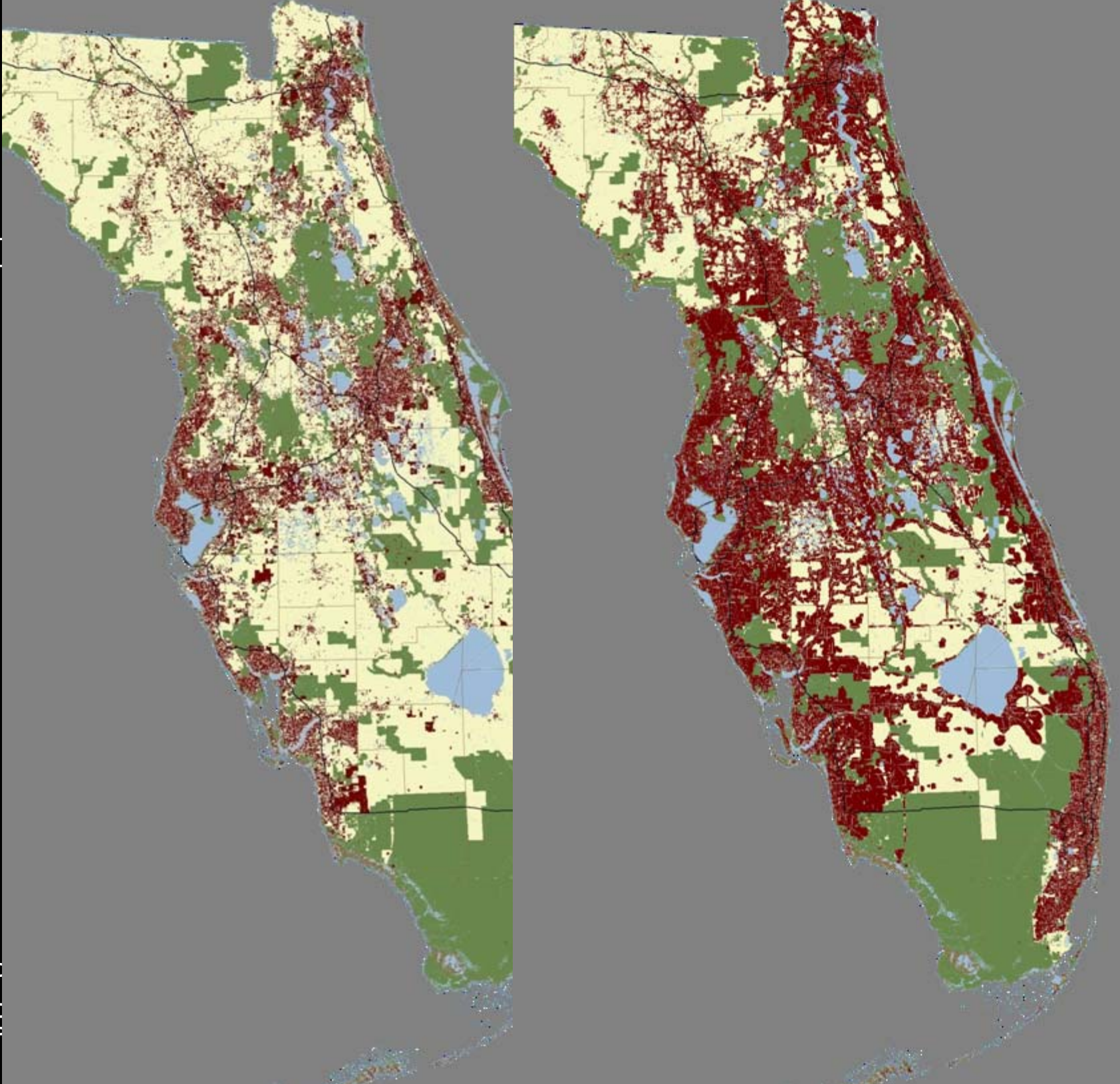


Total: 7 Million Acres

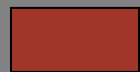
200



D
C
P



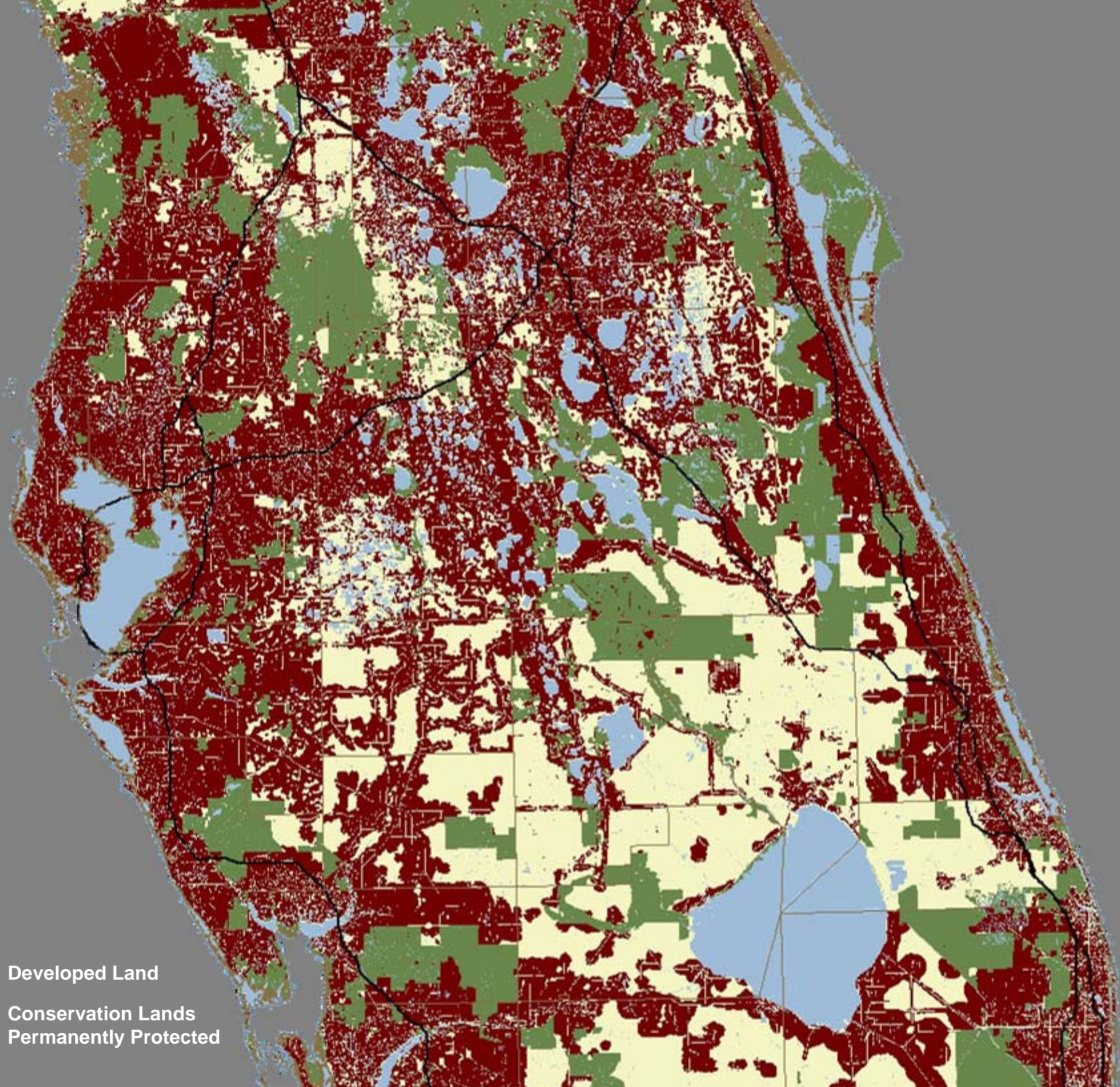




Developed Land



Conservation Lands
Permanently Protected



Time for Leadership

- **Expand Florida Forever**
- **Adopt New Policy on Converting Rural Land to Urban Use**
- **Create 100 Year Legacy Plan**

A sunset scene with birds flying over a body of water. The sun is low on the horizon, casting a golden glow across the sky and reflecting on the water. Several birds are silhouetted against the sky, some in flight and others perched on trees in the foreground. The overall mood is serene and natural.

ALTERNATIVE MODEL

PennDesign

UCF Metropolitan Center

1: Protect Florida's Essential Land

2: Invest in Balanced Transportation

3: Plan for Climate Change

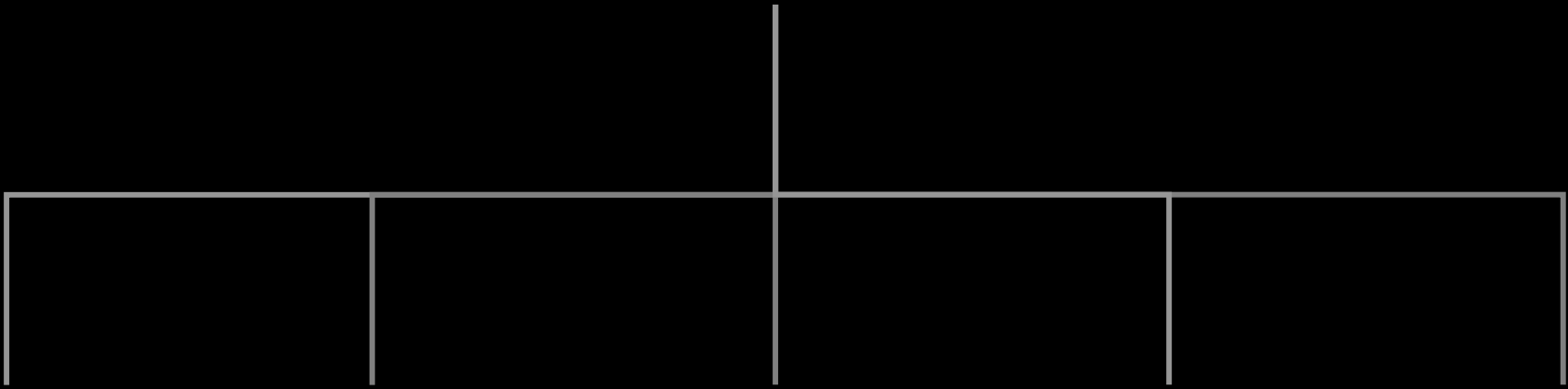
4: Don't Waste Land

5: Design with Nature

6: Encourage Compact Development

7: Rebuild to Create Great Places

Conservation Agreement Model



Habitat



Water



Wetlands



Agriculture



Contiguous



SOIL USE RANKING PROCESS

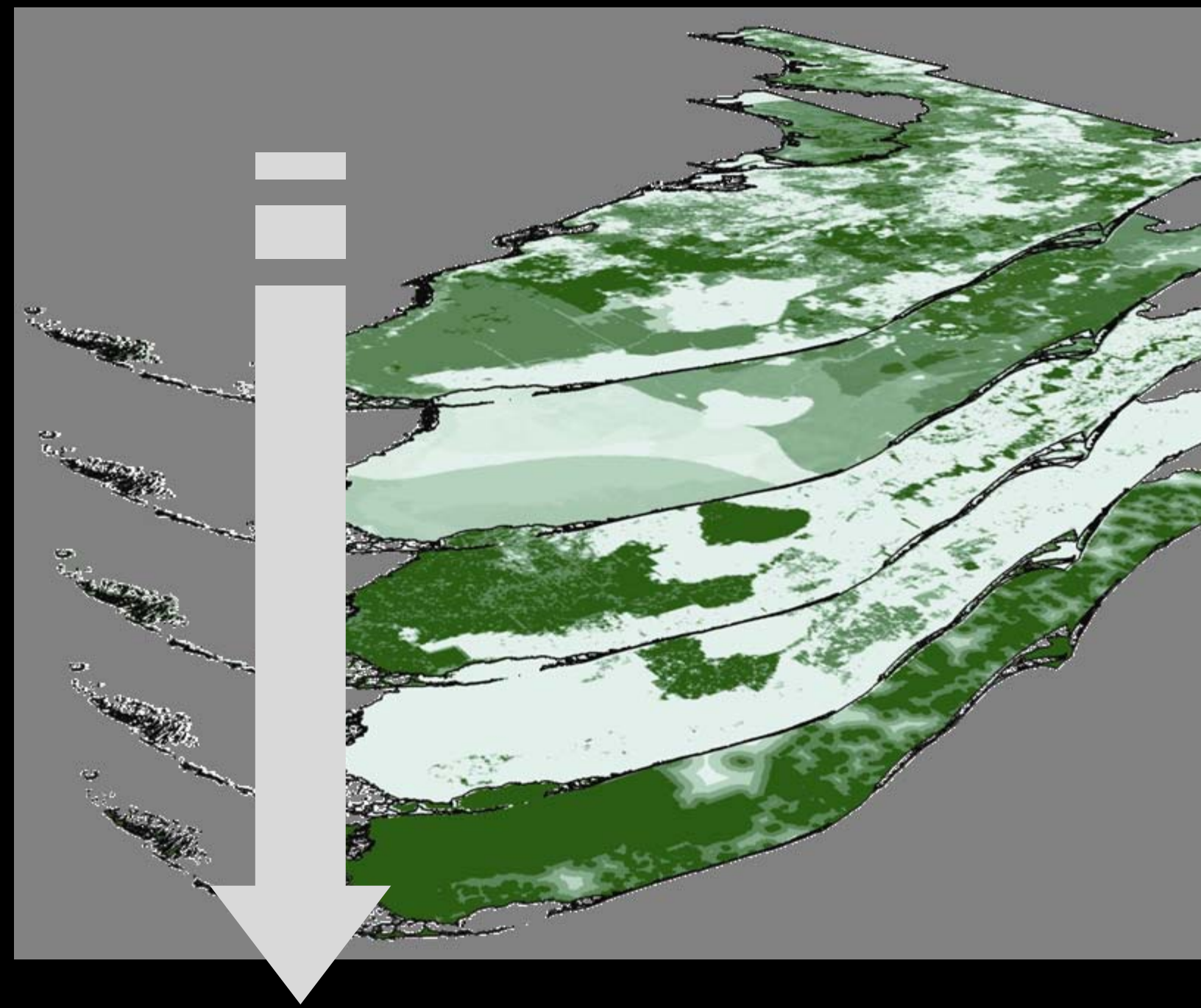
Habitat

Water

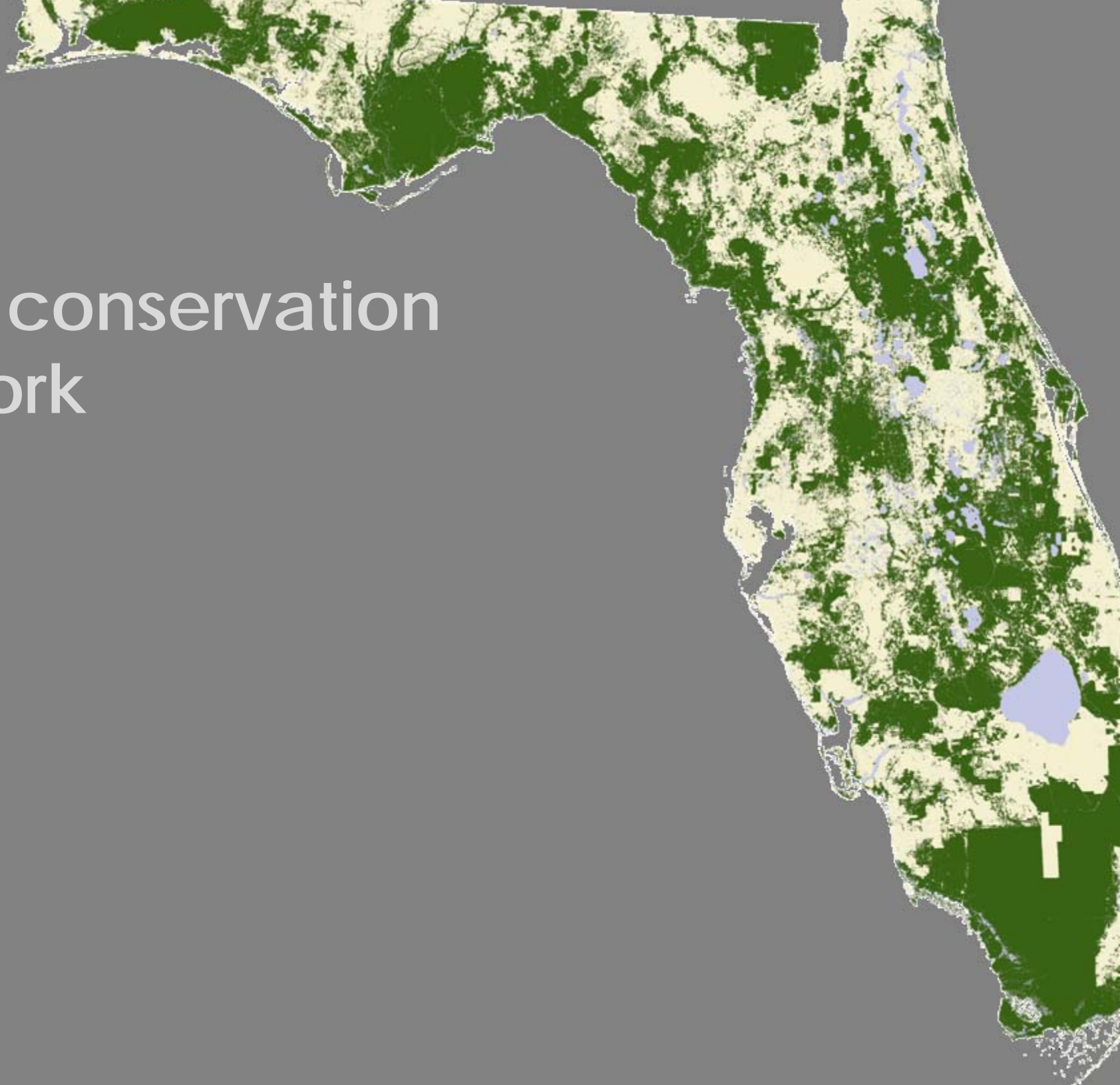
Wetlands

Agriculture

Contiguity

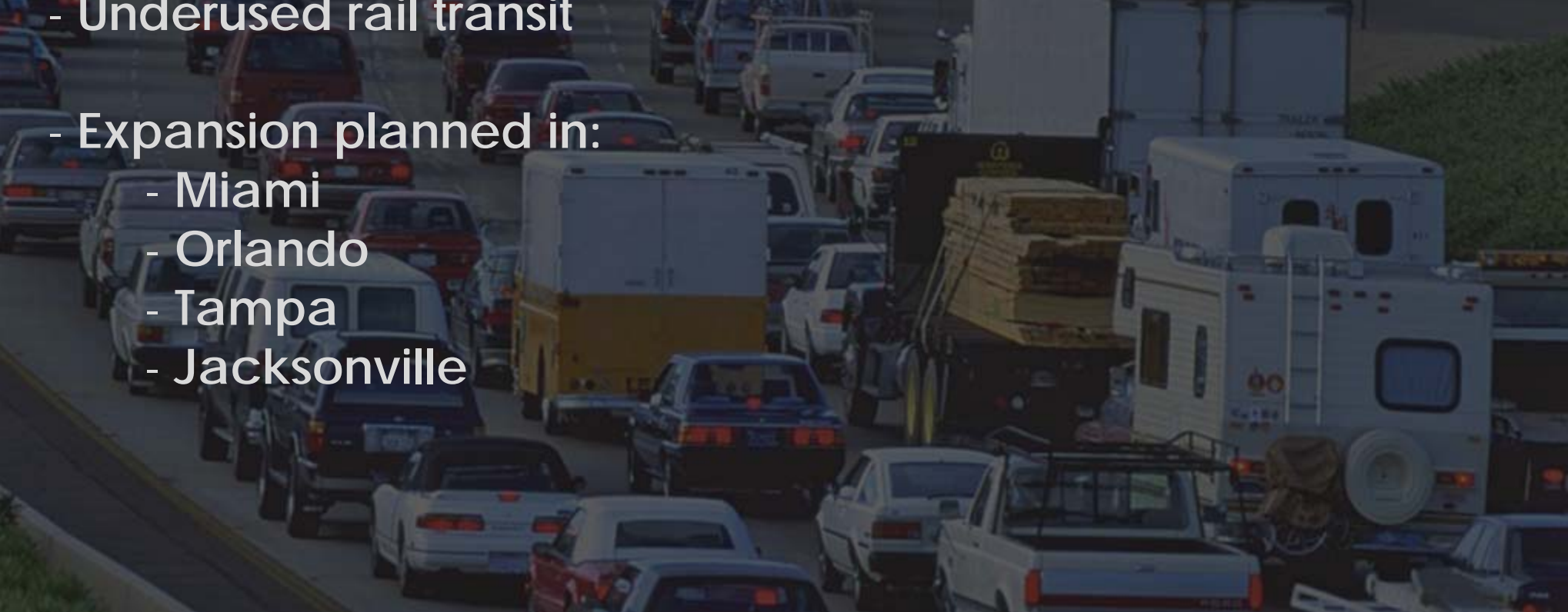


ideal conservation
network

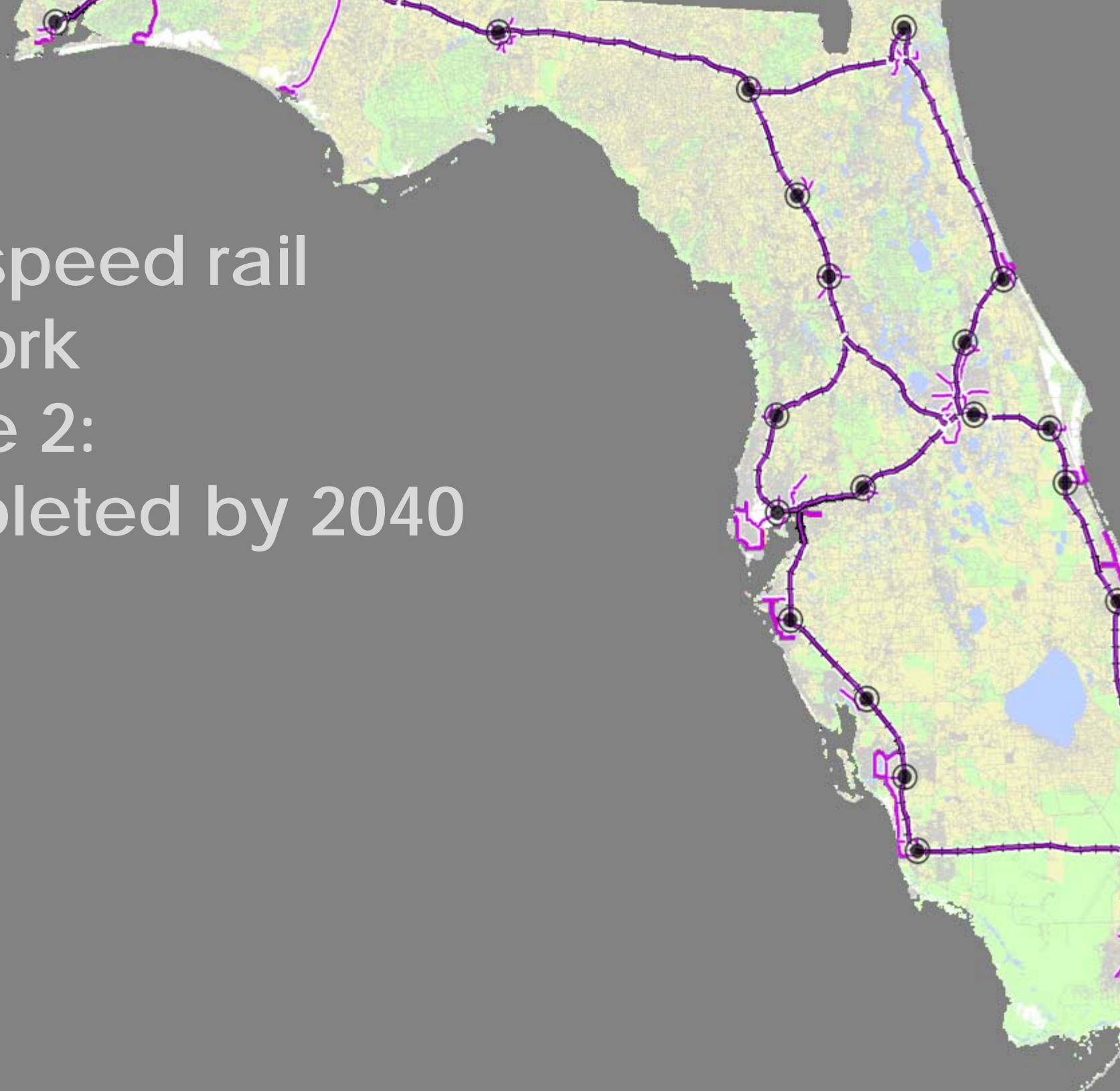


Existing Conditions





- 8500 miles of highway
- 10 new corridors planned
- Transit in most cities: bus
- Underused rail transit
- Expansion planned in:
 - Miami
 - Orlando
 - Tampa
 - Jacksonville



high speed rail network phase 2: completed by 2040



LEGEND

-  H
-  LI
-  C
-  M

OPPORTUNITY FOR CLIMATE CHANGE

Areas subject to increased flooding as a result of predictable climate change should be identified and appropriately protected or not approved as locations for new development



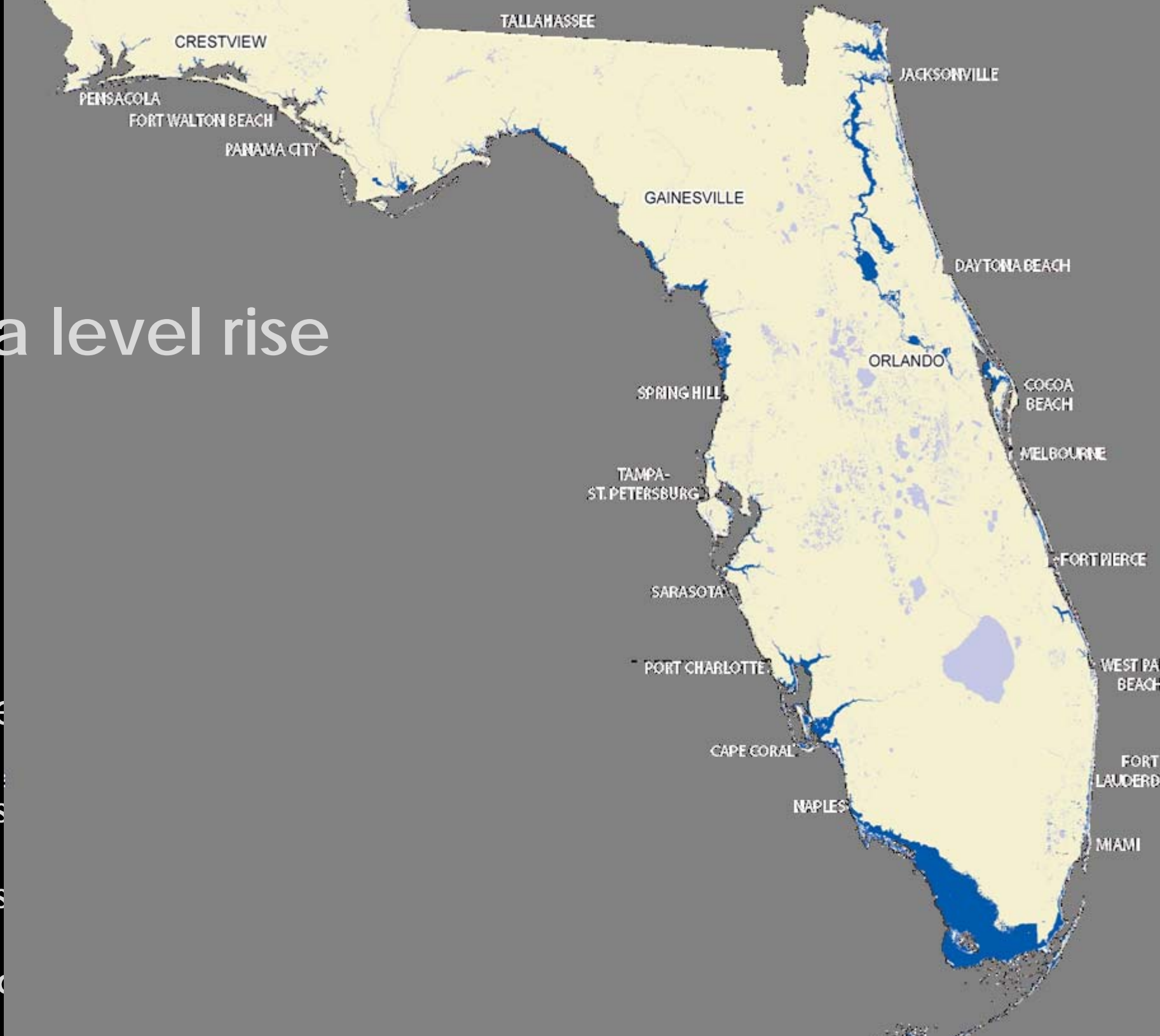
sea level rise

Acres

Exis

Exis

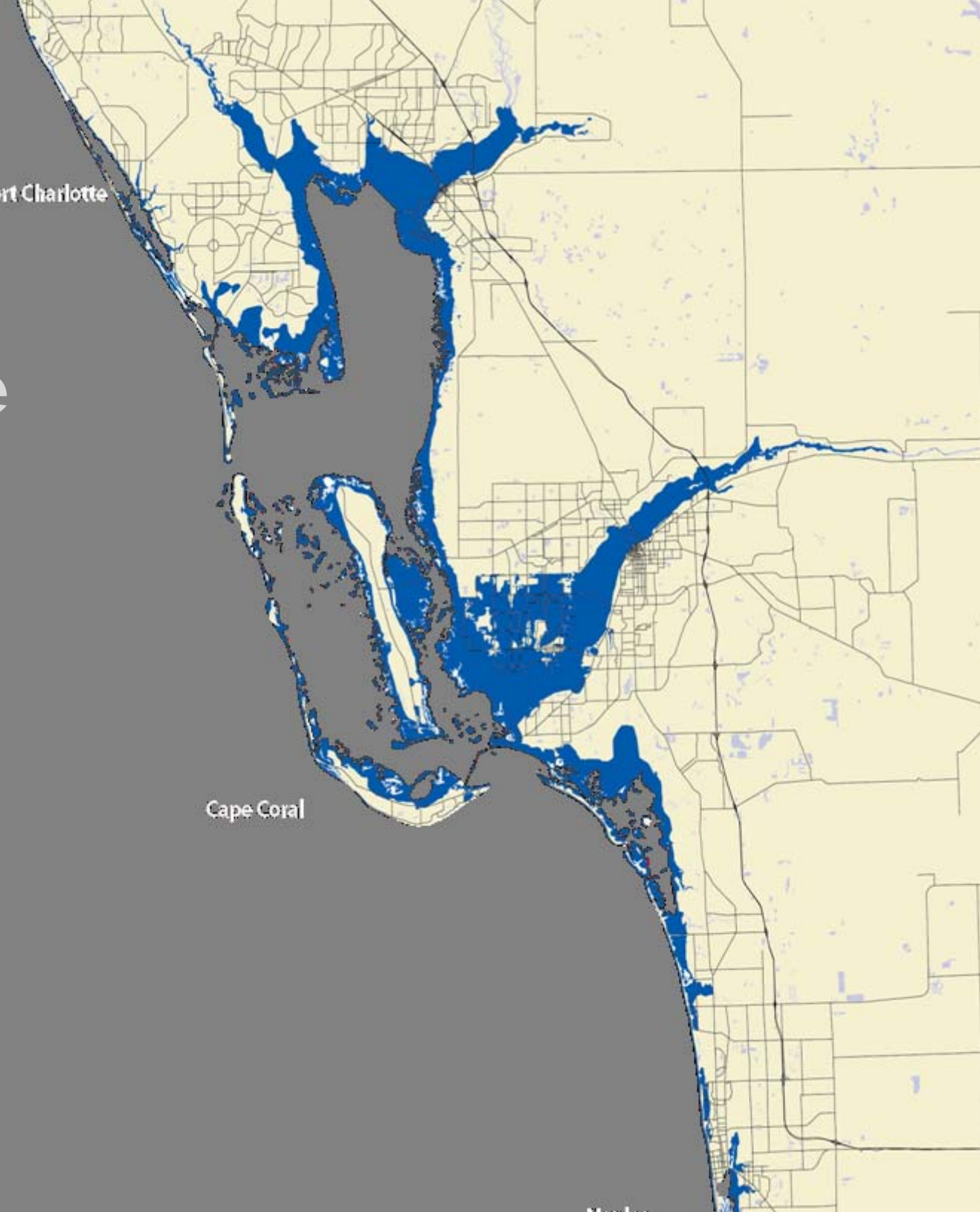
Ado



sea level rise

Port Charlotte

Cape Coral



ext
ha

Acres i

Existing

Urban

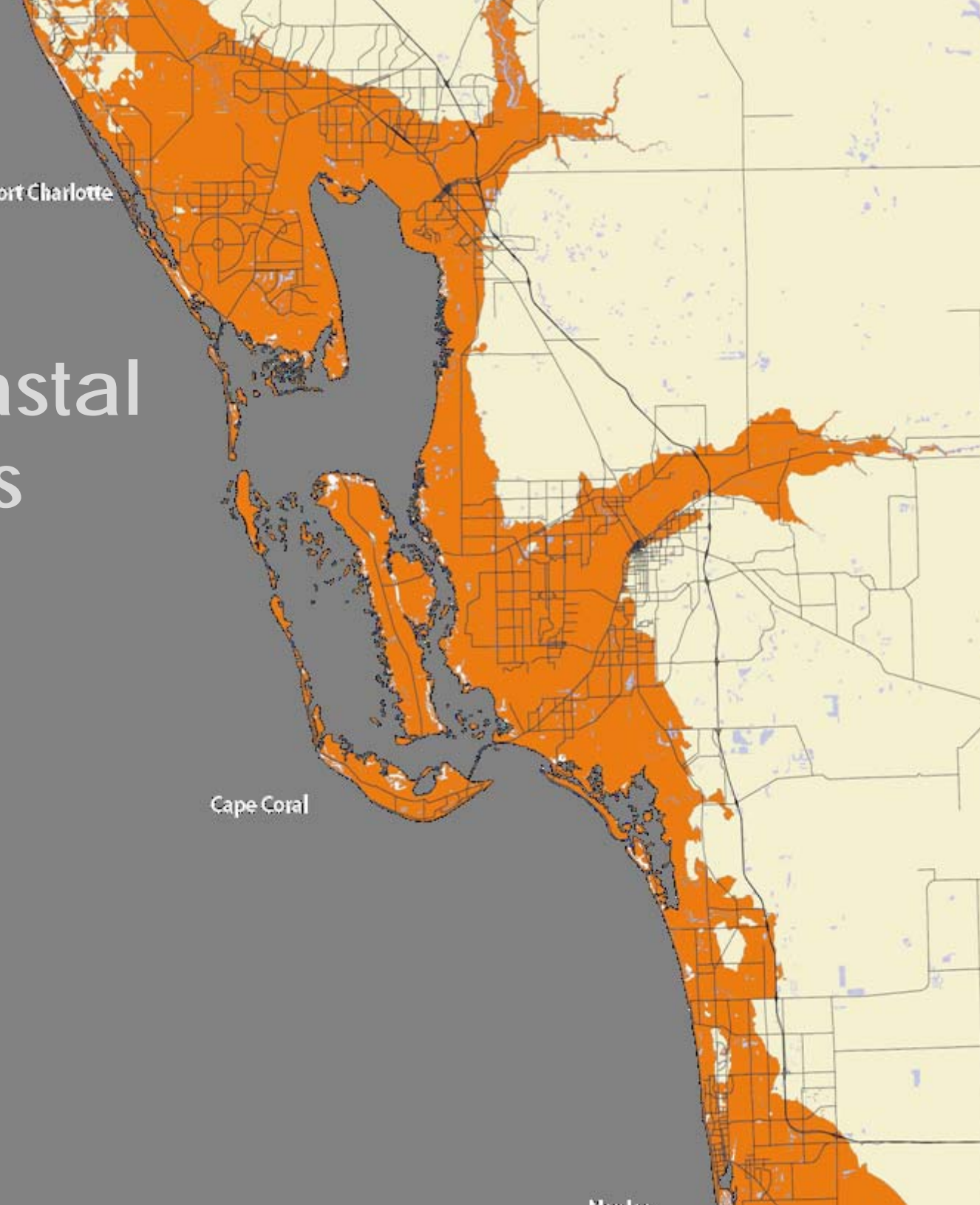
Addit



extreme coastal hazard areas

Port Charlotte

Cape Coral



HIGH-DENSITY WASTE LAND

- Increase density of some new development to achieve a regional average gross density that is at least equal to the state average
- Promote infill development
- Link building in rural areas to conservation by transferring development rights within large properties to increase density of the portion of the site that is developed

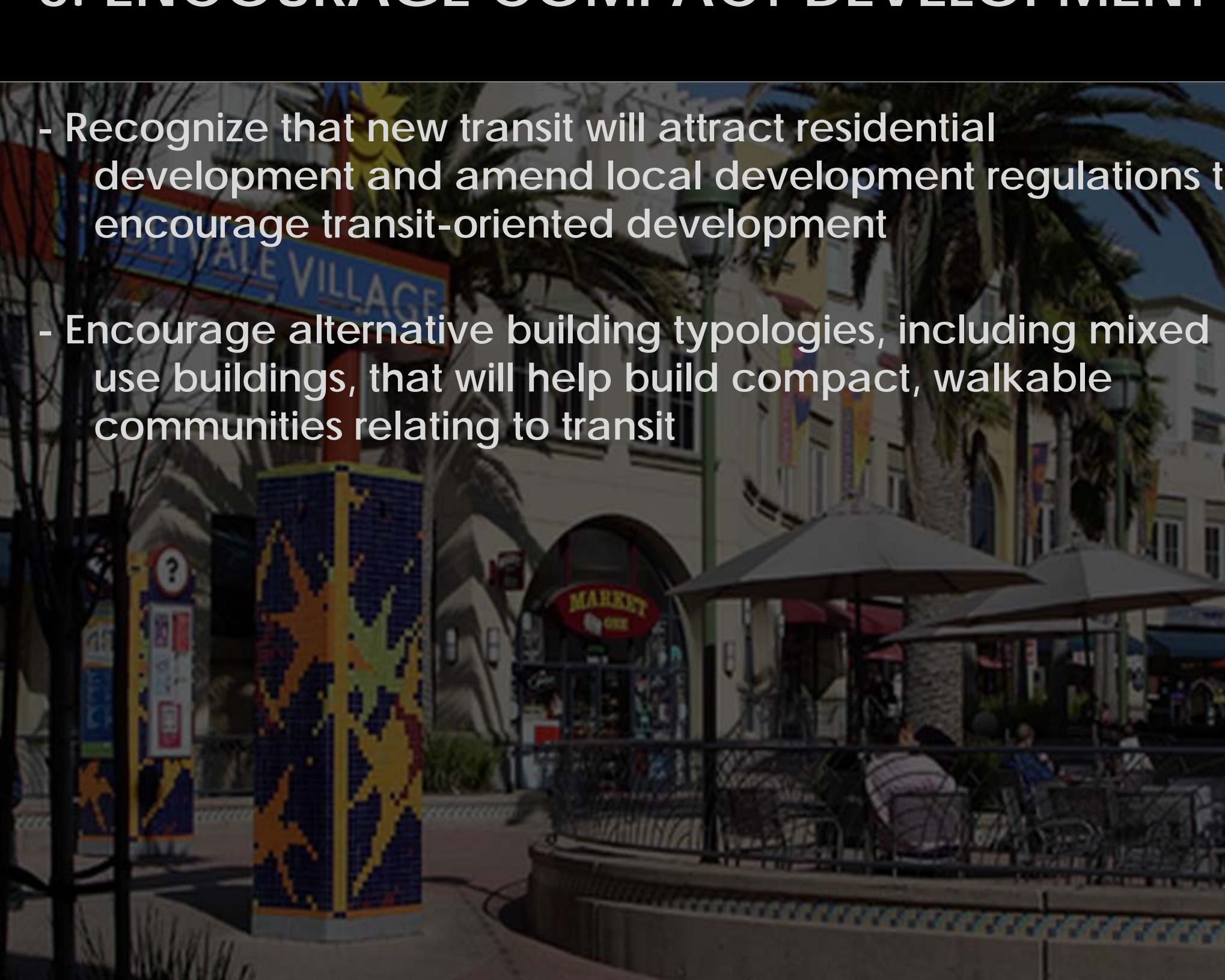
NOTE:

The average gross residential density in Florida is 3 people per acre

DESIGN WITH NATURE

- New development should be designed to protect and restore natural systems whenever possible
- Factors: topography, soils, water tables, building orientation, stormwater management, impervious surfaces
- Use Best Management Practices to balance development with the environment



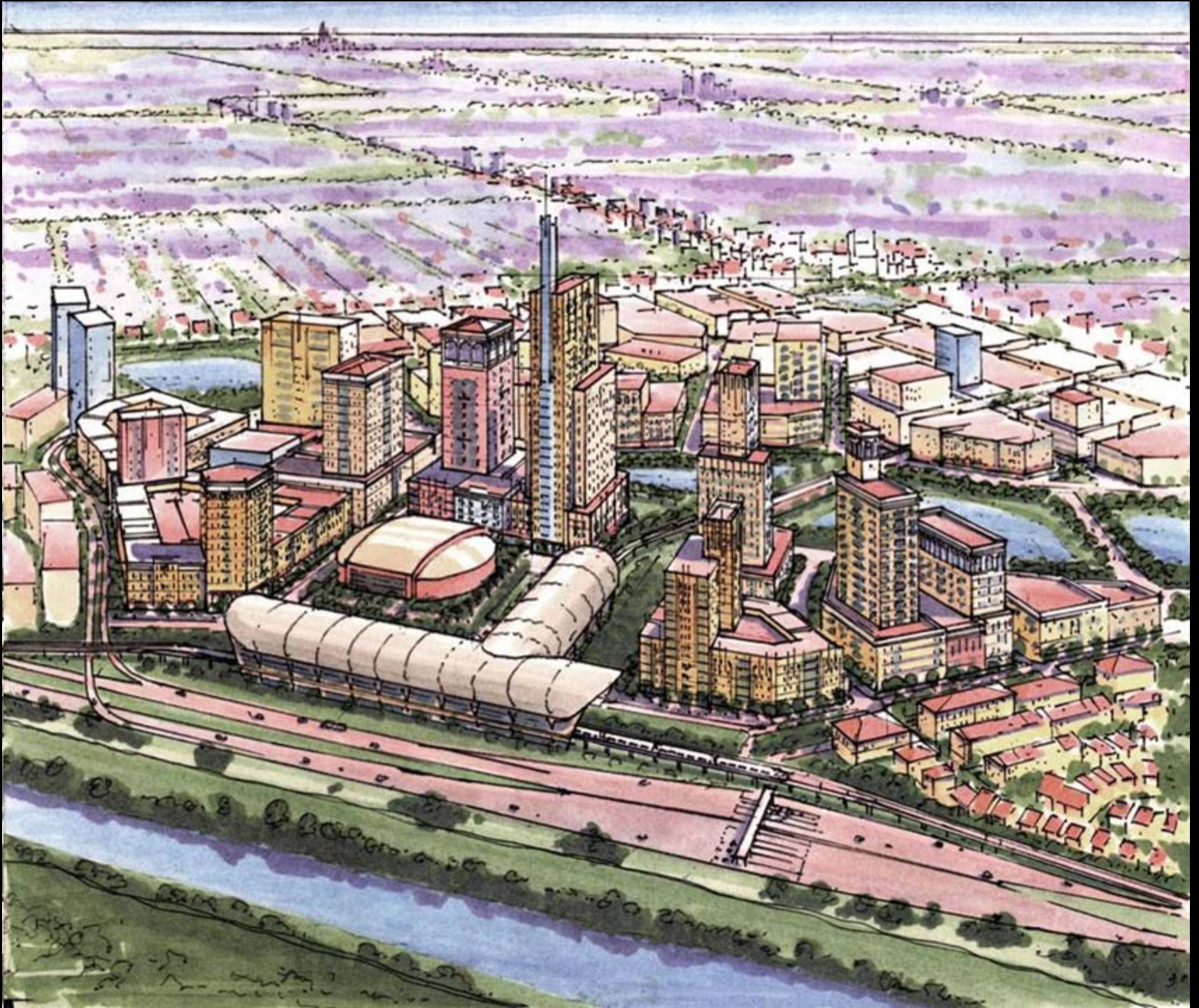


- Recognize that new transit will attract residential development and amend local development regulations to encourage transit-oriented development
- Encourage alternative building typologies, including mixed use buildings, that will help build compact, walkable communities relating to transit

Development along commercial corridor









1: Protect Florida's Essential Land

2: Invest in Balanced Transportation

3: Plan for Climate Change

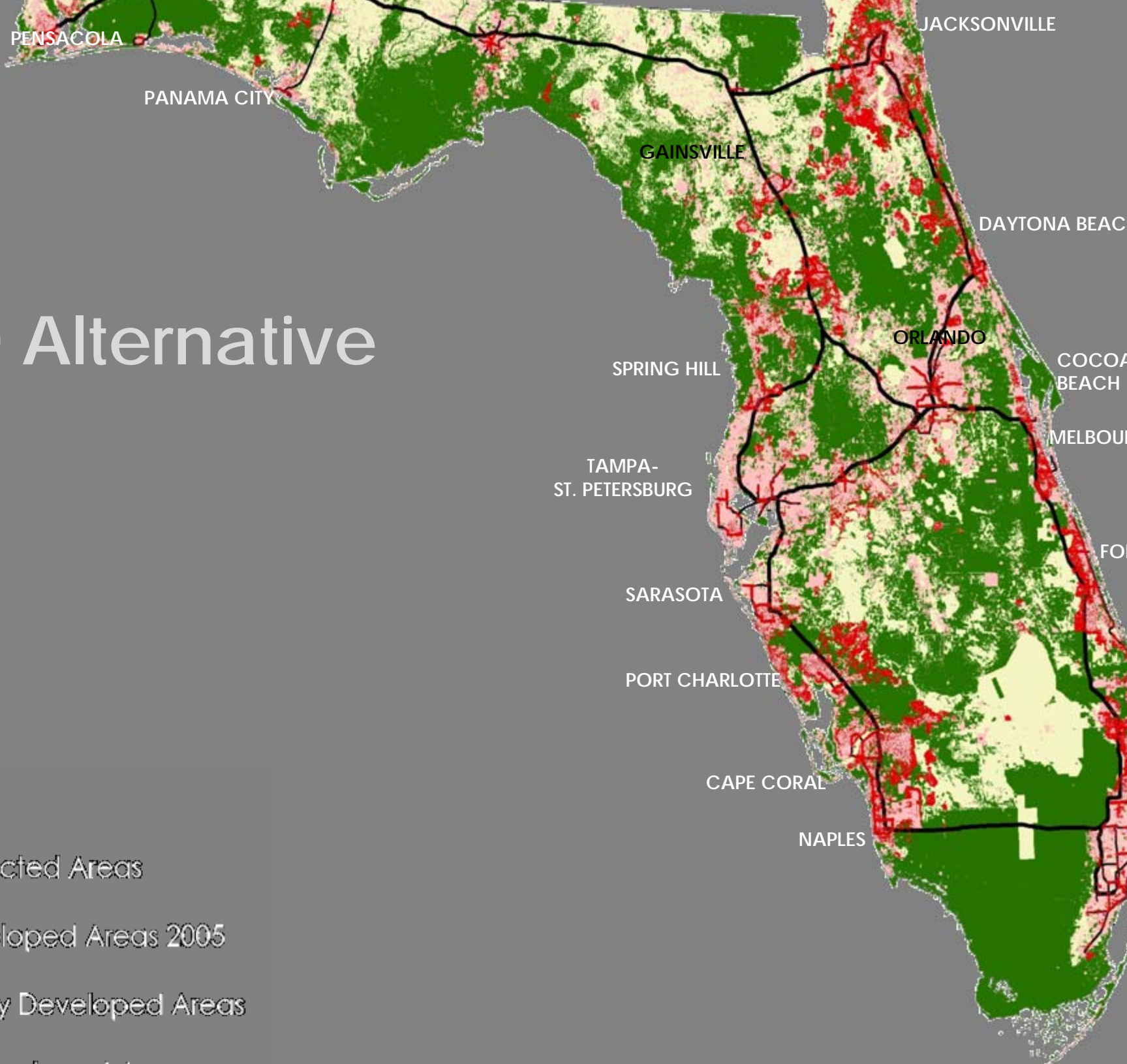
4: Don't Waste Land

5: Design with Nature

6: Encourage Compact Development

7: Rebuild to Create Great Places

2060 Alternative



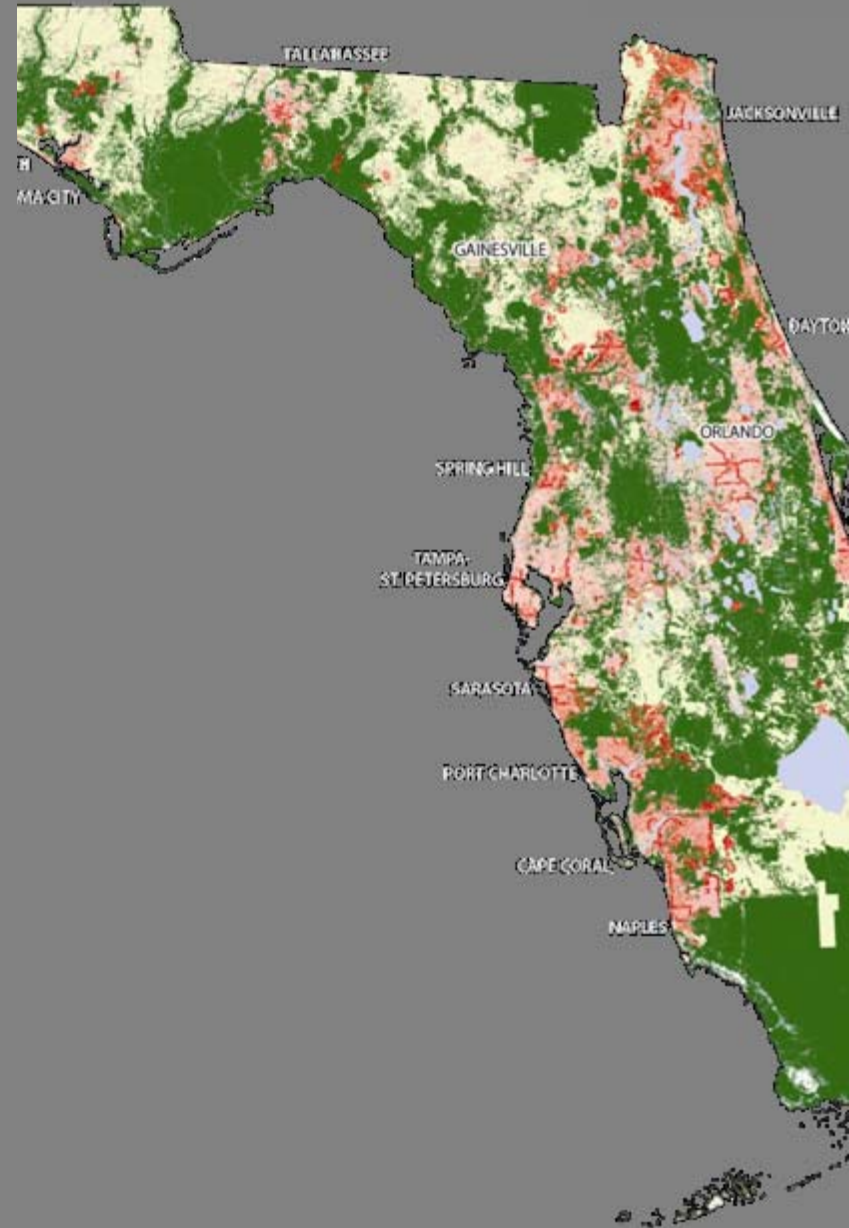
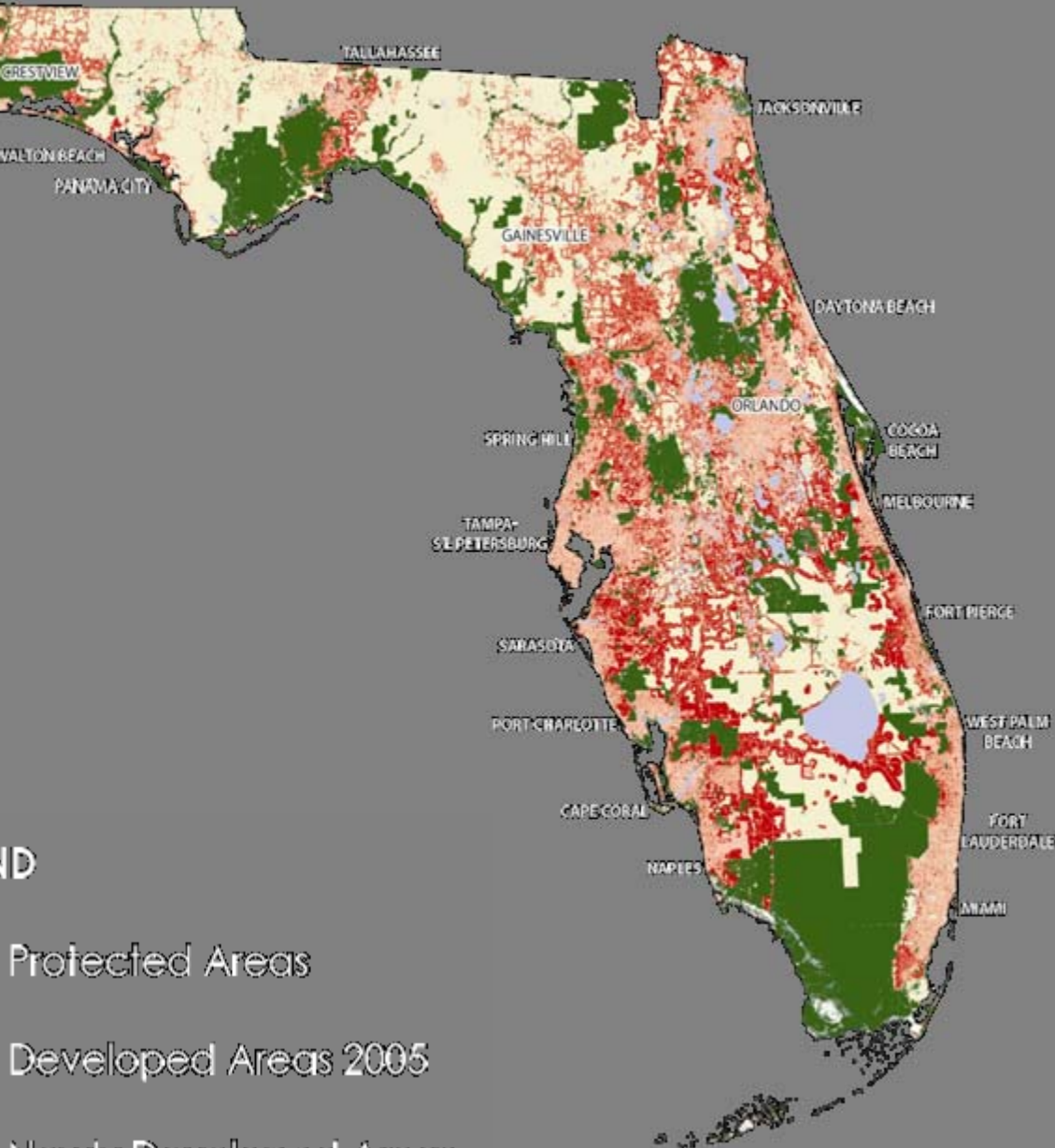
LEGEND

-  Protected Areas
-  Developed Areas 2005
-  Newly Developed Areas
-  Undeveloped Land

| | TREND | ALTERNATIVE |
|-----------------------------------|------------------|--|
| Land Development | \$700 BILLION | \$174 BILLION |
| New Acres Developed | 7 MILLION | 1.6 MILLION |
| Transportation Modes Offered | HIGHWAYS | HIGHWAYS + HIGH SPEED RAIL LOCAL TRANSIT |
| Highways | \$85 BILLION | \$21 BILLION |
| High Speed Rail and Local Transit | | \$61 BILLION |
| Land Acquisition | | \$203 BILLION |
| Highest Priority Conservation | 0 ACRES | 8.5 MILLION ACRES |

TREND

ALTERNATIVE



ID

Protected Areas

Developed Areas 2005

Newly Developed Areas



Metropolitan Center
for Regional Studies

www.metrocenter.ucf.edu