

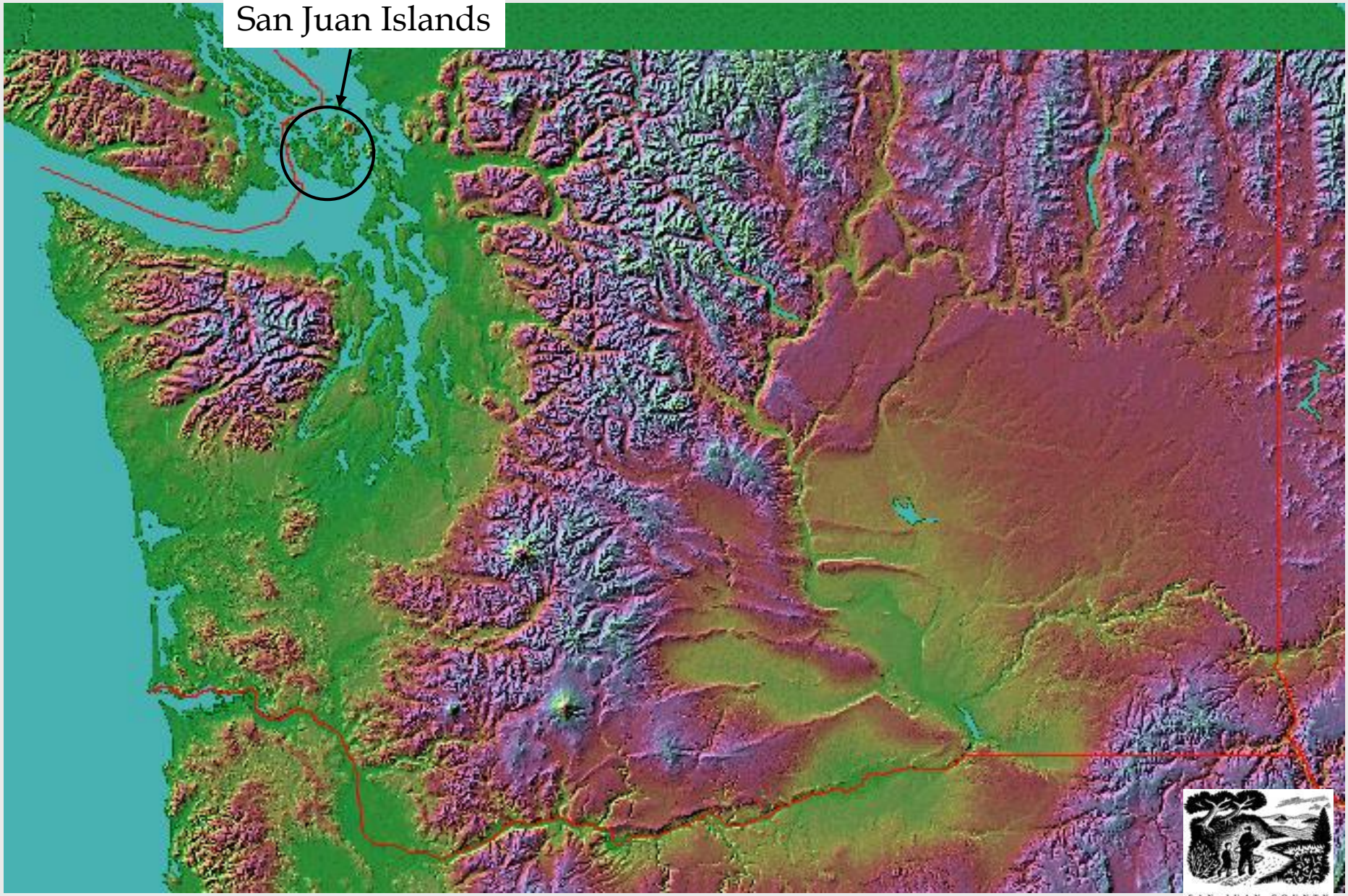
Partnerships, Grants, Politics and Adaptive Strategies: Making Projects Work Under Adverse Circumstances



Lincoln Bormann
Director, San Juan County Land Bank
Friday Harbor, Washington



San Juan Islands



SAN JUAN COUNTY

LANDBANK

Socio-political context of conservation in Washington State

- **Public Lands (36%)**
- **Strong Property Rights Contingent**
- **State / Federal Lands as Income Producers**

in San Juan County

- **Public Lands (10%)**
- **Vacation / Retirement Destination**
- **Population**
- **Public Perception of Environment**



County ordinance 16.54.010

The purpose of the San Juan County citizens conservation Land Bank is to preserve in perpetuity areas in the County that have environmental, agricultural, aesthetic, cultural, scientific, historic, scenic or low-intensity recreational value, and to protect existing and future sources of potable water.



LAND BANK



- **Fee-Simple Acquisitions** are properties that the Land Bank owns outright.
- ▲ **Conservation Easement / Historic Preservation Easement** lands are privately owned properties legally bound to preserve conservation values such as cherished views across farmland, critical habitat protection or historic preservation. Easement properties do not provide public access, unless otherwise noted.
- Reserved Life Estate**
- Conservation Buyer Property**



Natural Attributes

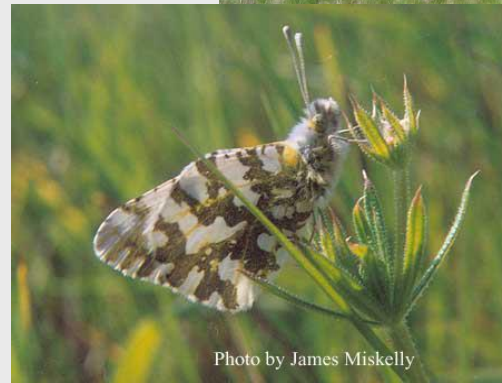


Photo by James Miskelly

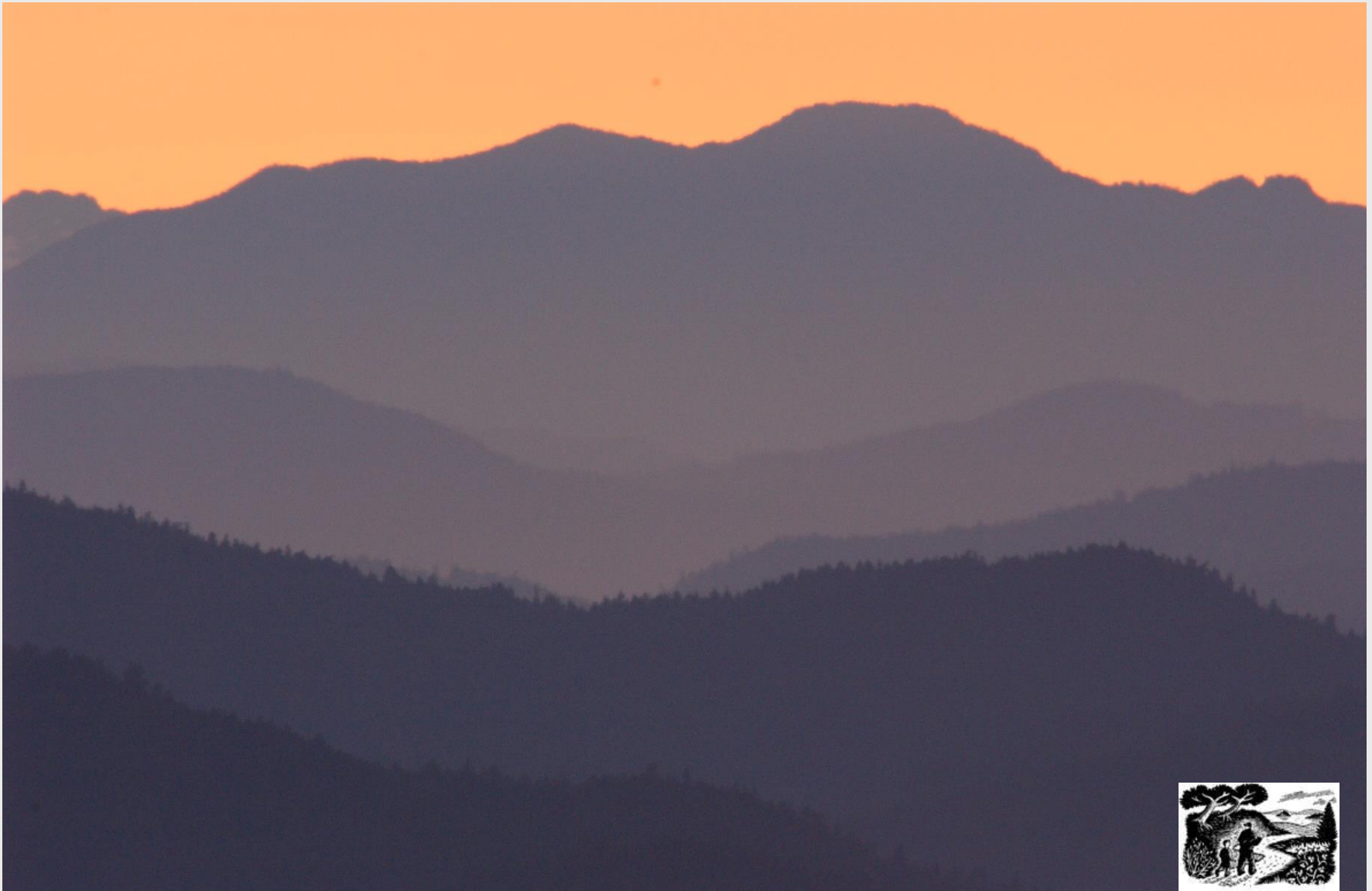


Partners

San Juan Preservation Trust (local land trust)
Washington Recreation and Conservation Office
US Fish and Wildlife Service
Trust for Public Land
The Nature Conservancy
Ducks Unlimited
Washington Salmon Recovery Funding Board
Northwest Natural Resource Group
Washington Department of Natural Resources
Conservation Fund
US National Park Service
US Bureau of Land Management
Private Foundations
US Natural Resource Conservation Service
San Juan County Conservation District
Private Citizens



Projects



SAN JUAN COUNTY

LAND BANK

Watmough Bay Acquisition, Lopez Island (13 acres)



Partners / Sources of Funding (\$ millions)

San Juan County Land Bank:	0.1
Salmon Recovery Funding Board:	0.5
San Juan Preservation Trust:	0.6
Private Land Donation:	<u>1.5</u>
Total:	2.7



Turtleback Mountain Acquisition, Orcas Island (1,576 acres)





SAN JUAN COUNTY

LANDBANK

Turtleback Mountain Acquisition

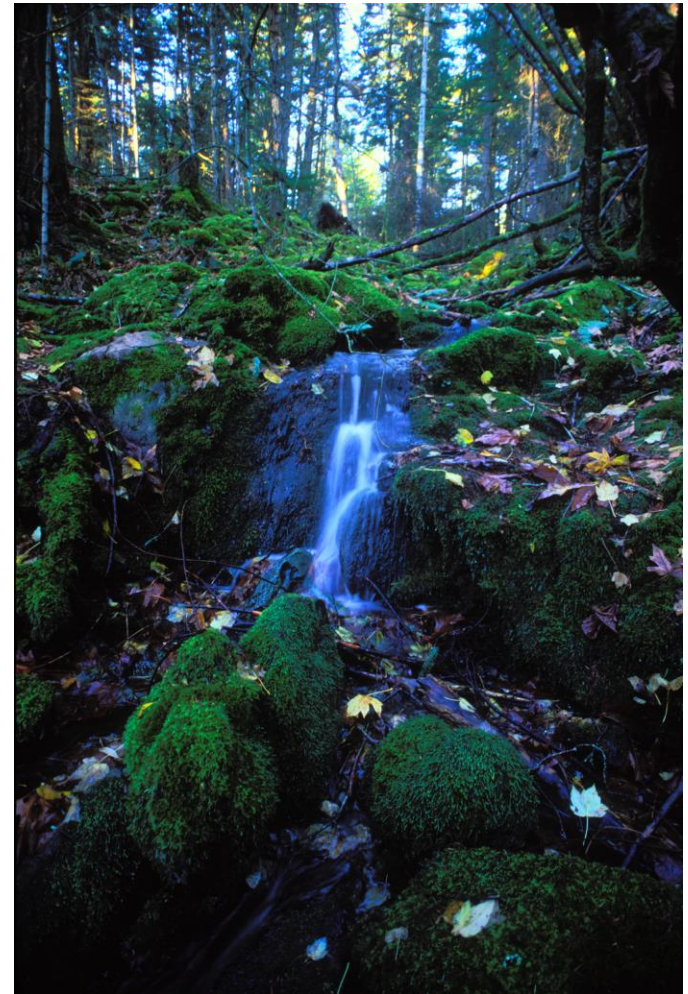
Partners / Funding Sources (\$ millions)

San Juan County Land Bank:	8.5
San Juan Preservation Trust:	7.0
Trust for Public Land:	0.5
Washington Wildlife and Recreation Program:	<u>1.5</u>
Total:	17.5
Regulatory Carbon Offset Credits (???):	1.5

Turtleback Mountain Stewardship

Partners / Funding Sources (\$ millions)

San Juan County Land Bank:	0.4
San Juan Preservation Trust:	<u>1.0</u>
Total:	1.4





SAN JUAN COUNTY

LANDBANK

Proposed Beaverton Valley Marsh Acquisition, San Juan Island (330 acres)



Acquisition Partners / Funding Sources (\$ millions):

San Juan County Land Bank:	1.5
Ducks Unlimited (NAWCA):	1.5
Washington Wildlife and Recreation Program:	1.0
San Juan Preservation Trust:	0.5
Resale (60 acres) w/conservation easements:	<u>1.0</u>

Total: 5.5

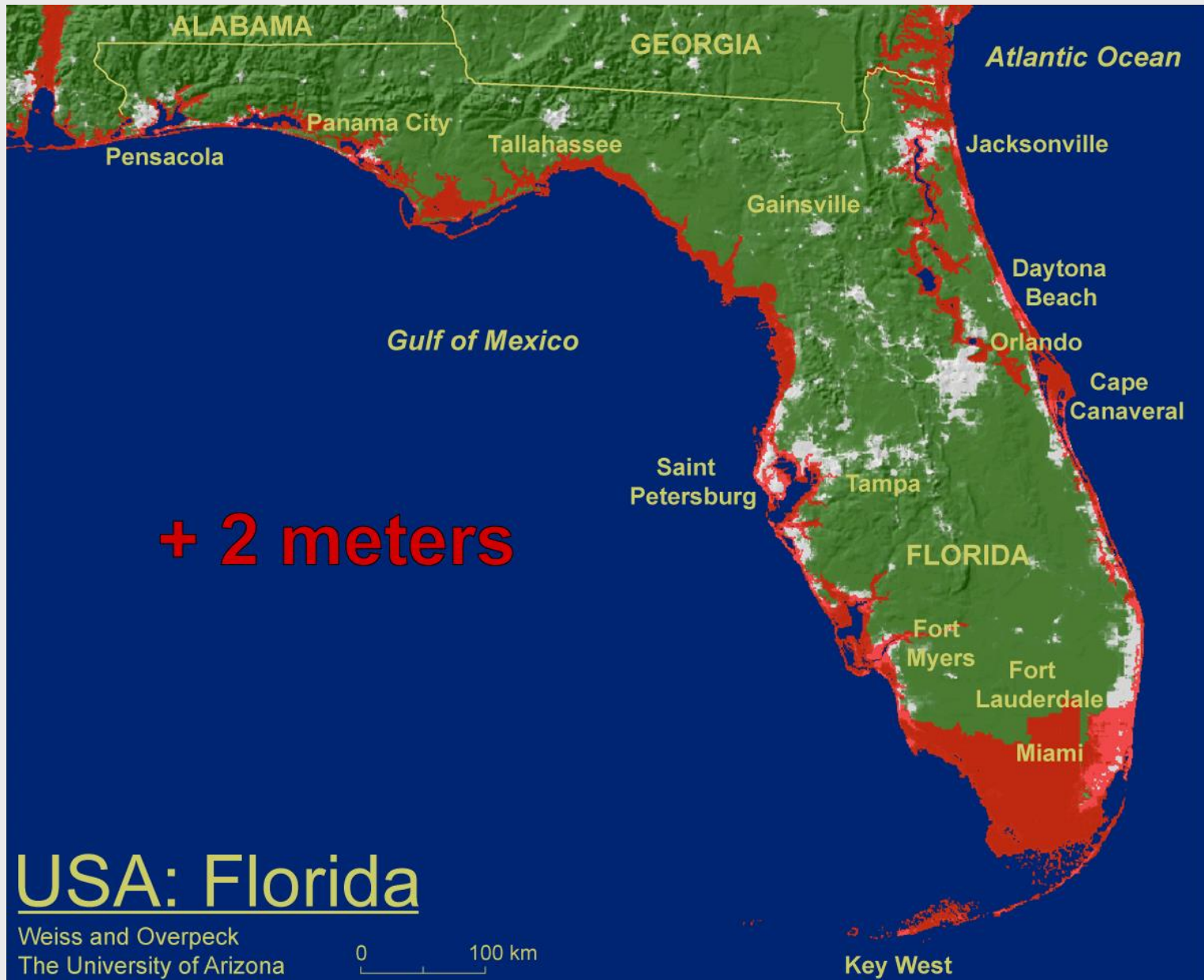


Applications for Florida

- Land Trusts
- Refocusing national environmental organizations
- Federal prioritization
 - LWCF funding
 - Farm bill reauthorization



Heretical Thoughts?





SAN JUAN COUNTY

LAND BANK

