



# RI Ocean Special Area Management Plan

## Ocean SAMP Working with Fisheries Stakeholders

David Beutel

RI Coastal Resources Management Council

Renewable Ocean Energy & the Marine Environment  
Stakeholders: Societal, Economic, and Policy Issues

November 3, 2010

# Ocean SAMP Contents

- Ecology
- Global climate change
- Cultural and historic resources
- Commercial and recreational fisheries
- Marine transportation and navigation
- Renewable energy
- Recreation and tourism
- Other future uses
- Existing statutes, regulations, and policies
- Policies of the Ocean SAMP

# Stakeholder List

Appointee representing Westerly Town Council  
First Warden, Town of New Shoreham (Block Island)  
President, South County Tourism  
Vice President of RI Advocacy, Conservation Law Foundation  
Deputy, Narragansett Indian Tribal Historic Preservation Office  
Executive Director, Narragansett Chamber of Commerce  
Director, Rhode Island Marine Trades Association  
Appointee representing Rhode Island AFL-CIO  
Director of Development and Advocacy, People's Power & Light  
Eastern New England Scalloper's Association  
Sakonnet Point Fishermen's Association  
President, Rhode Island Saltwater Anglers Association  
Town Council President, Town of Little Compton  
Principal Planner, Town of South Kingstown  
Director, Professor, Wind Power RI Project, Roger Williams University  
Executive Director, Commercial Fisheries Research Foundation  
Fisherman, Rhode Island Monkfishermen's Association

# Stakeholder List

Executive Director, Rhode Island League of Cities and Towns  
Executive Director, Washington County Regional Planning Council  
Director of Planning, City of Newport  
Tribal Historic Preservation Officer, Narragansett Indian Tribe  
President, Rhode Island Commercial Fishermen's Association  
Rhode Island Chapter Chair, Sierra Club  
Landscape Architecture Faculty, Rhode Island School of Design  
Town Manager, Town of Narragansett  
Captain, Northeast Marine Pilots  
President, Jamestown Chamber of Commerce  
President, Rhode Island Lobstermen's Association  
Town Council President, Jamestown Town Council  
Rhode Island Party & Charter Boat Association  
Executive Director, Aquidneck Island Planning Commission  
Councilor, Charlestown Town Council  
Executive Director, Rhode Island Historical Society  
President, Rhode Island Fishermen's Alliance



# Stakeholder List

Chapter Chairman, R.I. Chapter/Surfrider Foundation

President of Rhode Island Distribution, National Grid

Administrator, Rhode Island Wind Alliance

Ocean State Aquaculture Association

President and CEO, Newport County Convention and Visitors Bureau

Member, Atlantic Offshore Lobster Association

Executive Director, Newport County Chamber of Commerce

Executive Director, Audubon Society of Rhode Island

President, South Kingstown Chamber of Commerce

Director of Conservation, The Nature Conservancy

President, Ocean State Fishermen's Association

Staff Environmental Attorney, Save the Bay

President, Greater Providence Chamber of Commerce

Executive Director, Block Island Tourism Council

Town Planner, Town of Middletown

# Fisheries Stakeholders

- Recreational Fishermen
- Charter and Party Boat Fishermen
- Mobile Gear
  - Bottom trawling
  - Scallop Dredging
  - Purse seining
  - Mid-water trawling
- Fixed Gear
  - Lobster pots
  - Gillnets
  - Fish pots

# Fisheries TAC

- Atlantic States Marine Fisheries Commission
- New England Fishery Management Council
- NMFS Northeast Regional Office
- RI Department of Environmental Mgmt.
- RI Sea Grant Fisheries
- Save the Bay
- Conservation Law Foundation
- The Nature Conservancy
- Commercial Fisheries Research Foundation
- URI GSO
- RI Lobstermen's Assn.
- RI Commercial Fishermen's Assn.
- RI Fishermen's Alliance
- RI Party and Charter Boat Assn.
- RI Saltwater Anglers Assn.
- RI Monkfishermen's Assn.
- Ocean State Aquaculture Assn.
- Ocean State Fishermen's Assn.
- Sakonnet Point Fishermen's Assn.
- Eastern NE Scalloper's Assn.



# Managing Conflict

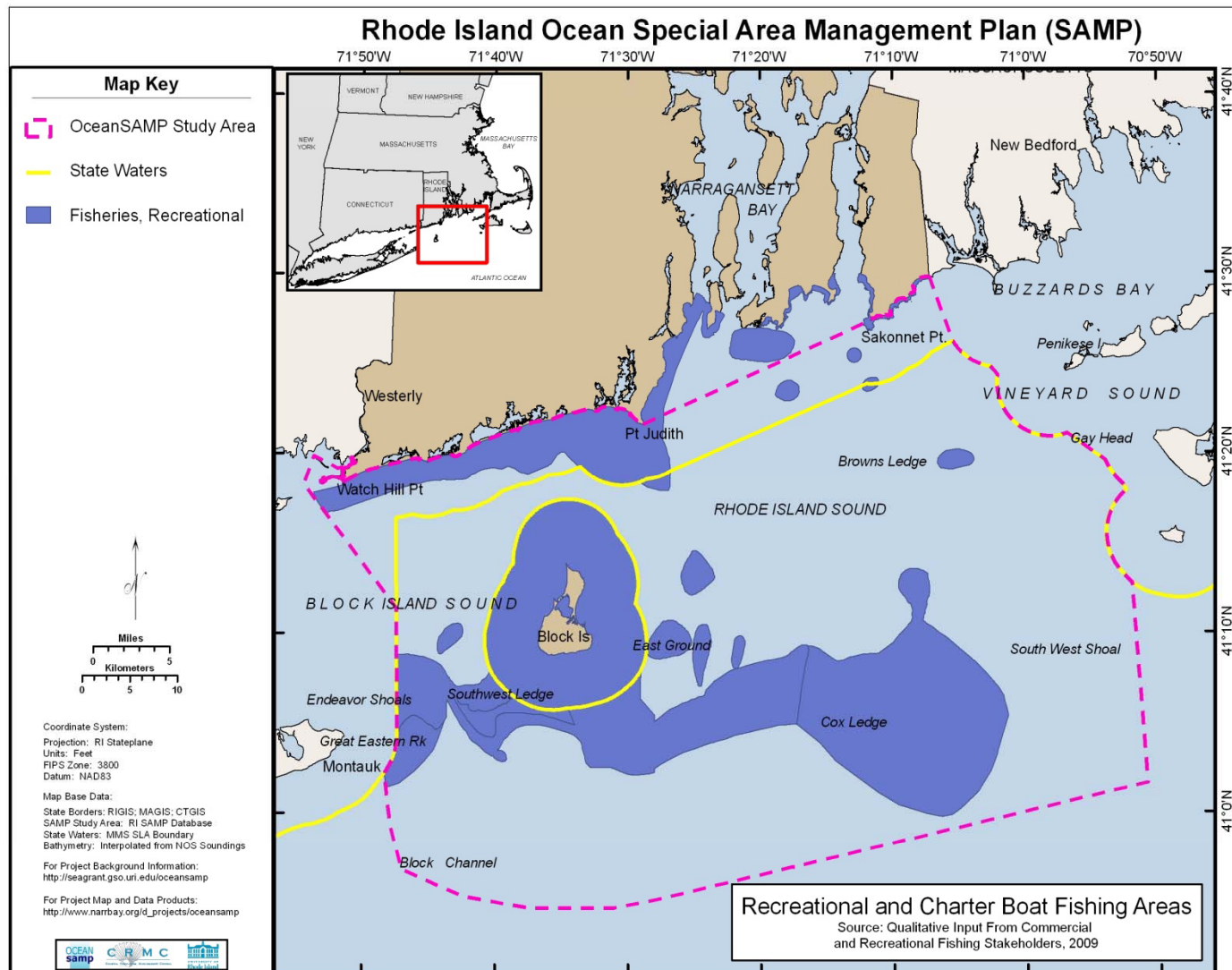




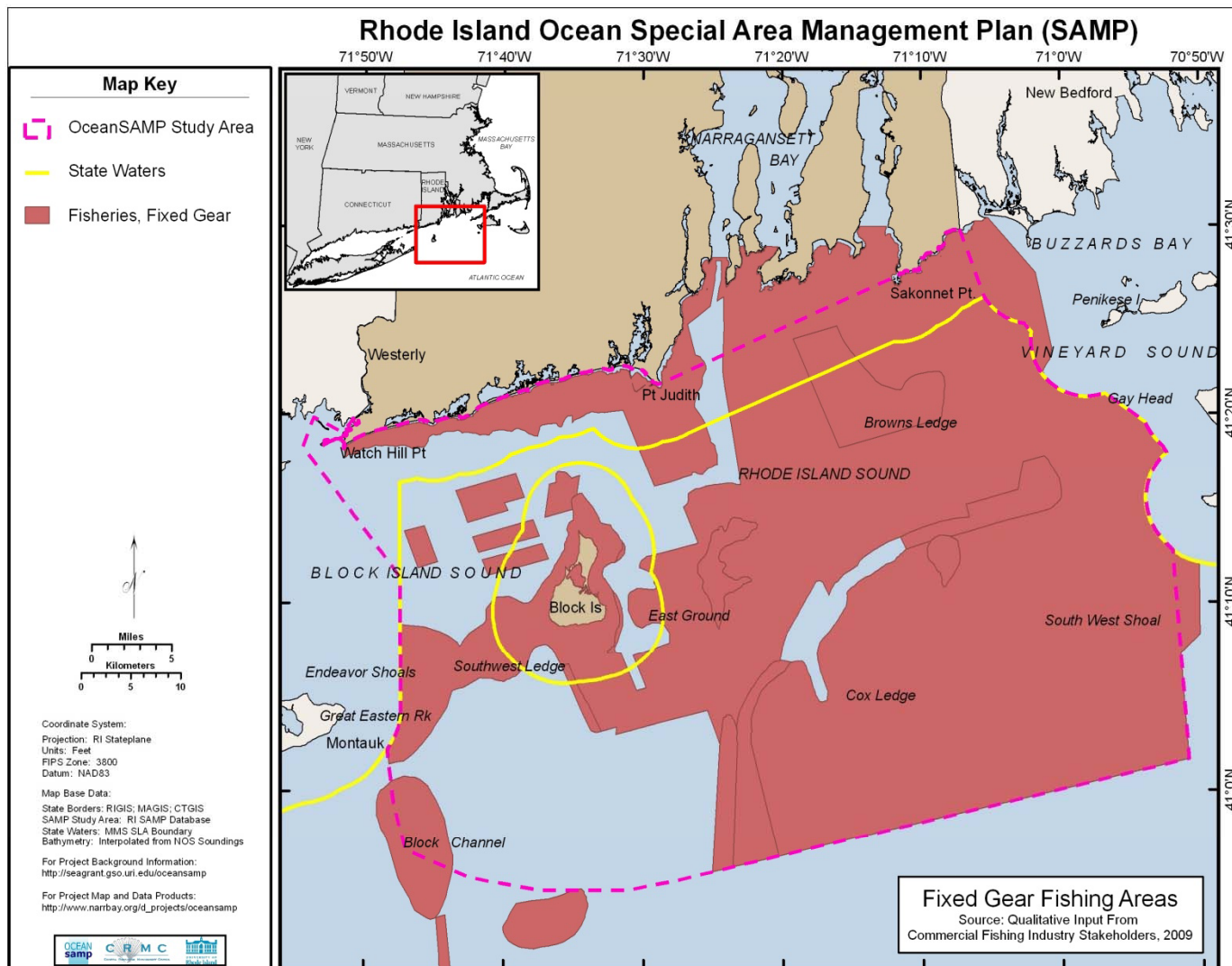
# Fisheries TAC

- Atlantic States Marine Fisheries Commission
- New England Fishery Management Council
- NMFS Northeast Regional Office
- RI Department of Environmental Mgmt.
- RI Sea Grant Fisheries
- Save the Bay
- Conservation Law Foundation
- The Nature Conservancy
- Commercial Fisheries Research Foundation
- URI GSO
- RI Lobstermen's Assn.
- RI Commercial Fishermen's Assn.
- RI Fishermen's Alliance
- RI Party and Charter Boat Assn.
- RI Saltwater Anglers Assn.
- RI Monkfishermen's Assn.
- Ocean State Aquaculture Assn.
- Ocean State Fishermen's Assn.
- Sakonnet Point Fishermen's Assn.
- Eastern NE Scalloper's Assn.

# Mapping and Outreach



# Fixed Gear Areas






# Rhode Island Ocean Special Area Management Plan (SAMP)

71°50'W 71°40'W 71°30'W 71°20'W 71°10'W 71°0'W 70°50'W

## Map Key

 OceanSAMP Study Area


 State/Federal Waters

### Number of Trips per Cell

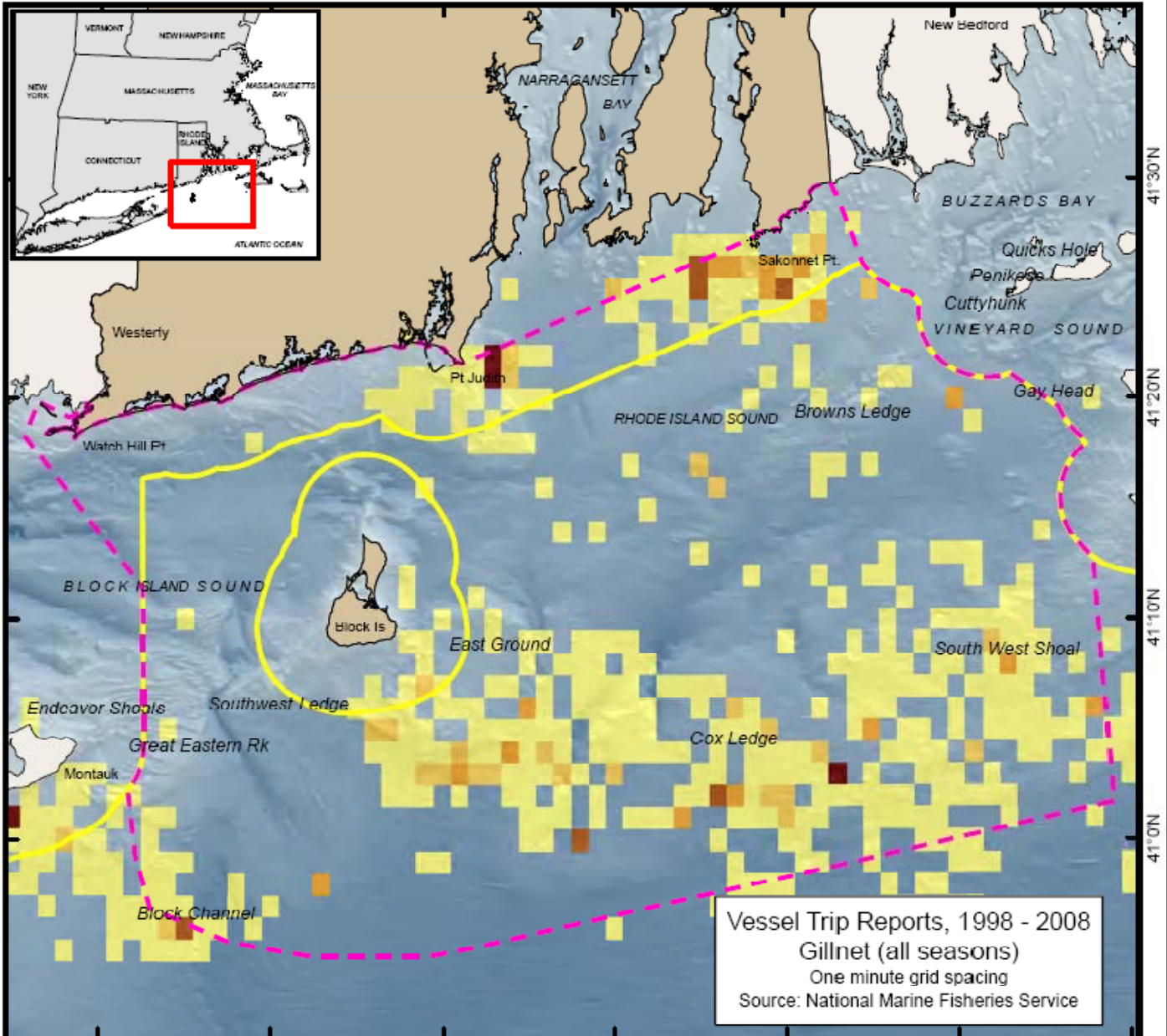
 6 - 50

 51 - 100

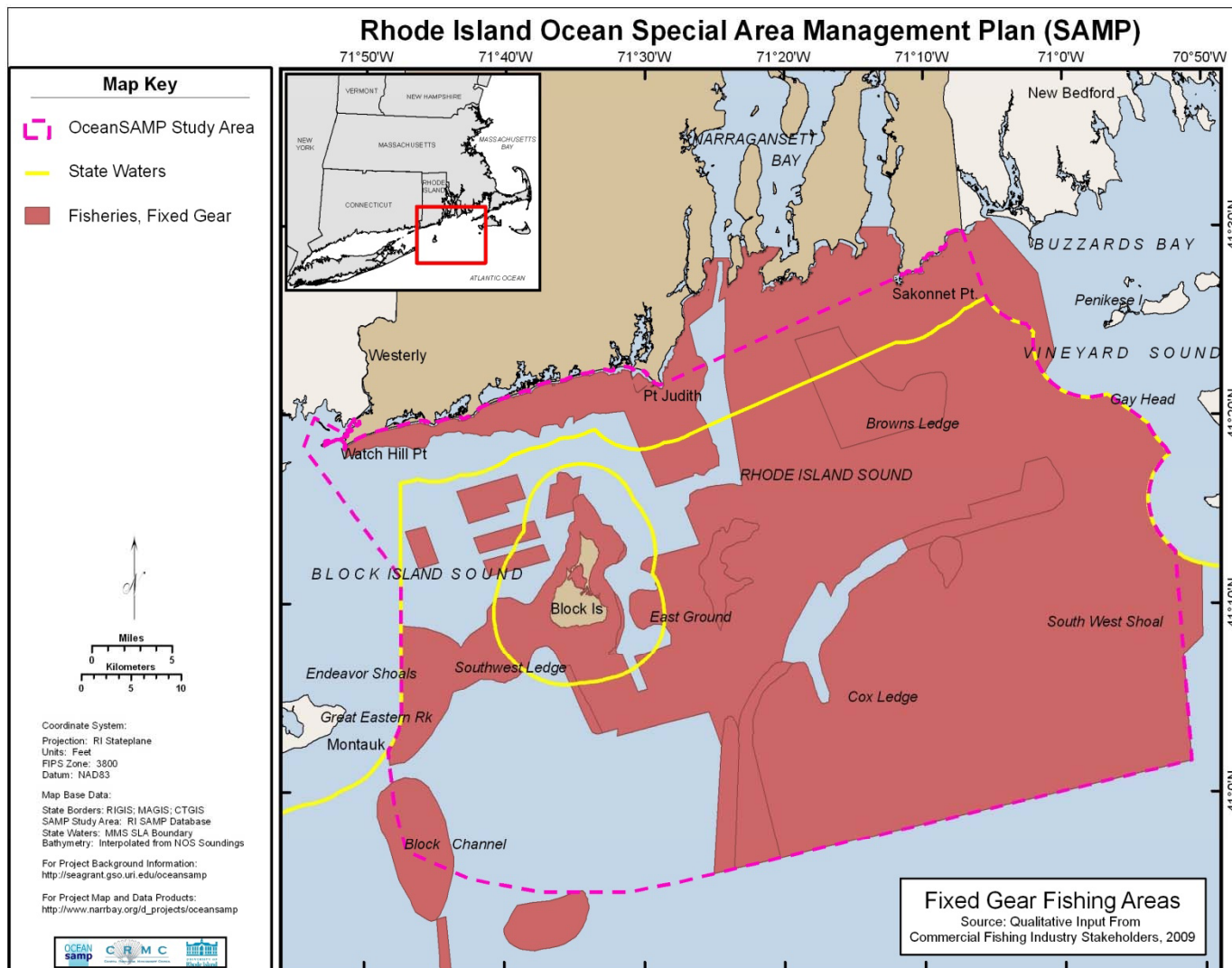
 101 - 200

 201 - 300

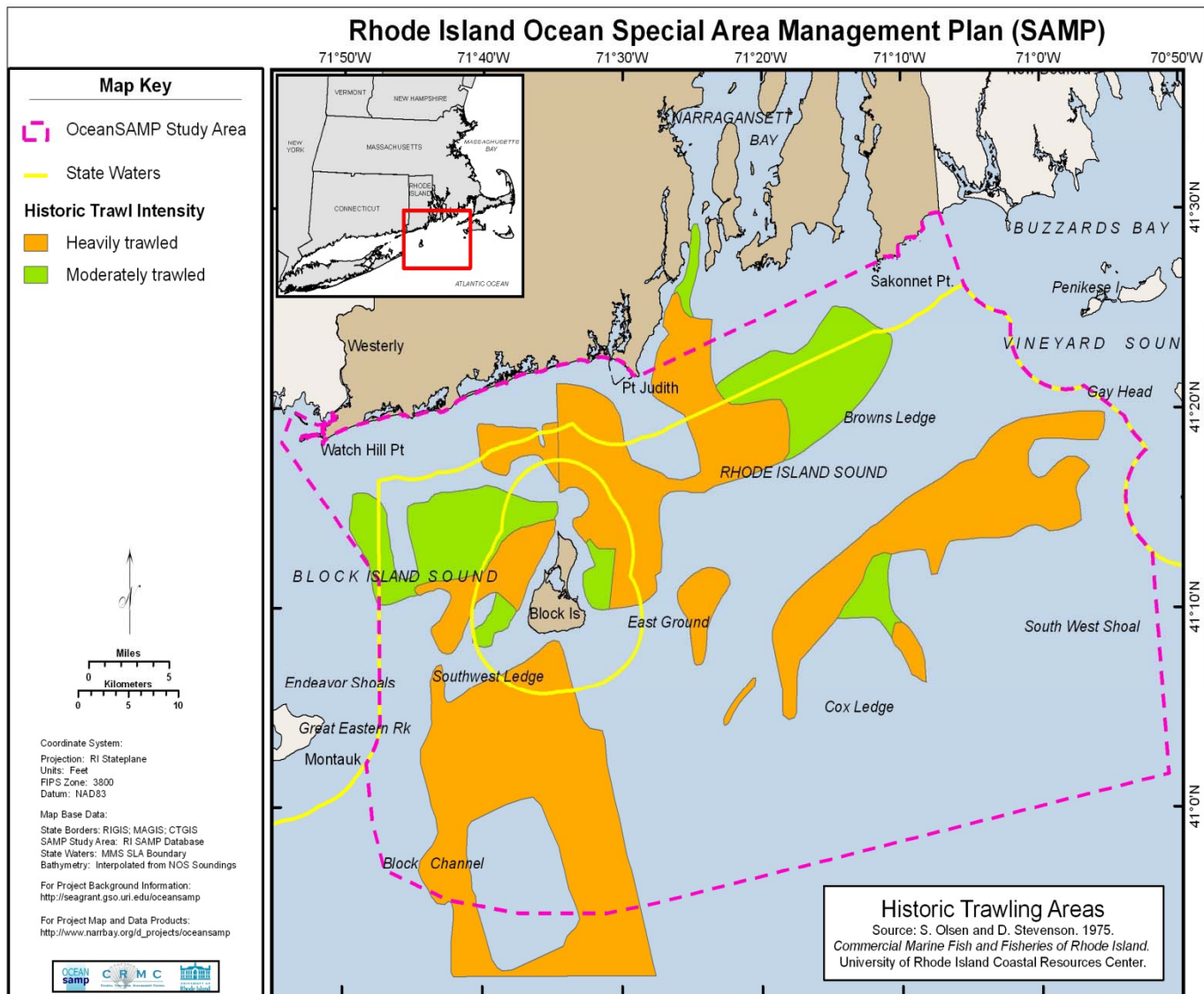
 301+



# Fixed Gear Areas

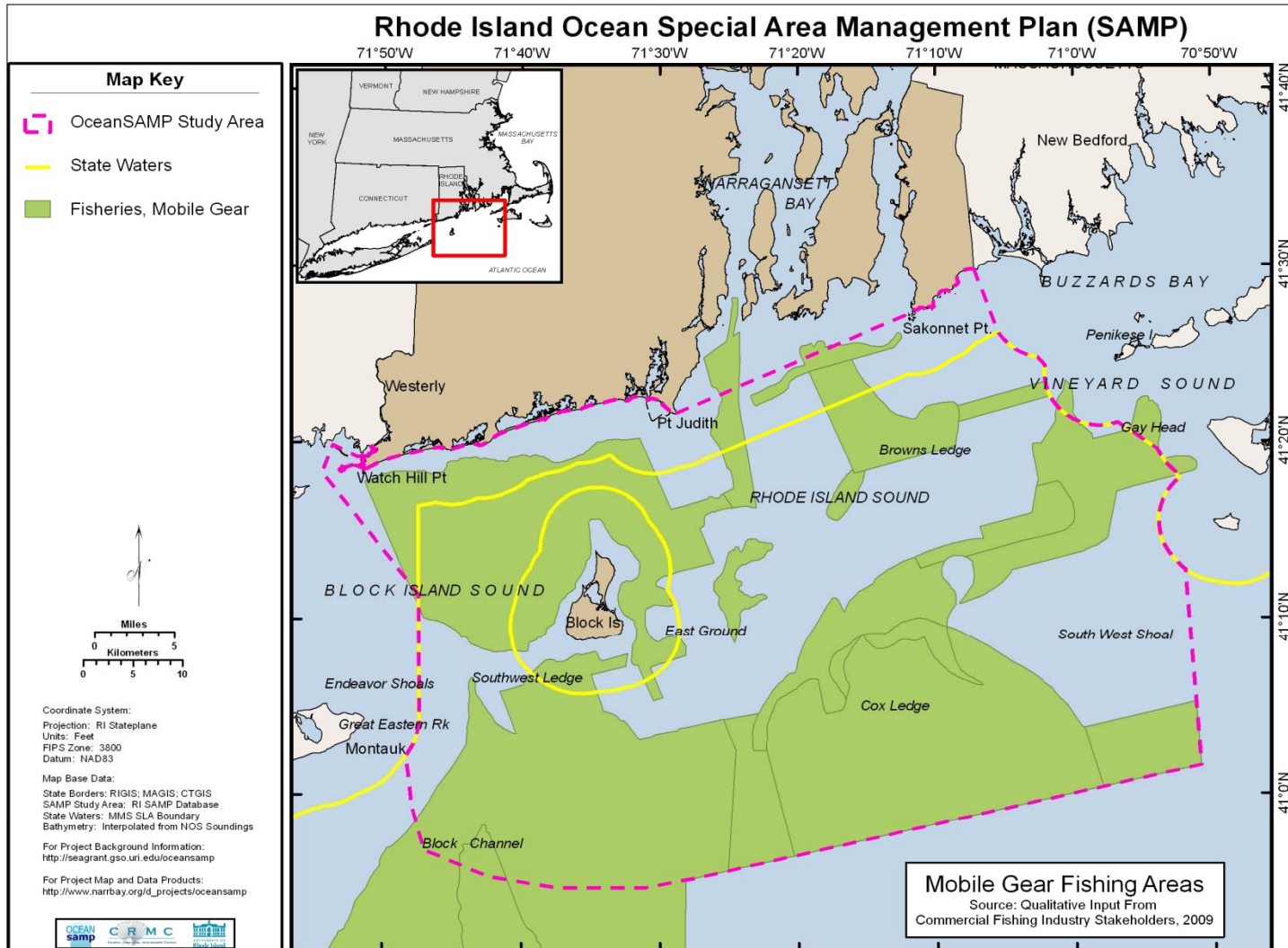


# Historic Trawl Ground





# Mobile Gear Areas



# Rhode Island Ocean Special Area Management Plan (SAMP)

71°50'W 71°40'W 71°30'W 71°20'W 71°10'W 71°0'W 70°50'W

## Map Key

 OceanSAMP Study Area

 State/Federal Waters

\* VTR - DRS

cells\_1\_minute

VTR\_DRS

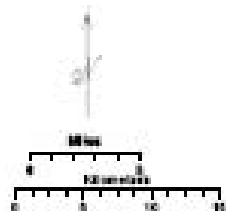
 1 - 10

 11 - 25

 26 - 50

 51 - 100

 101 - 323

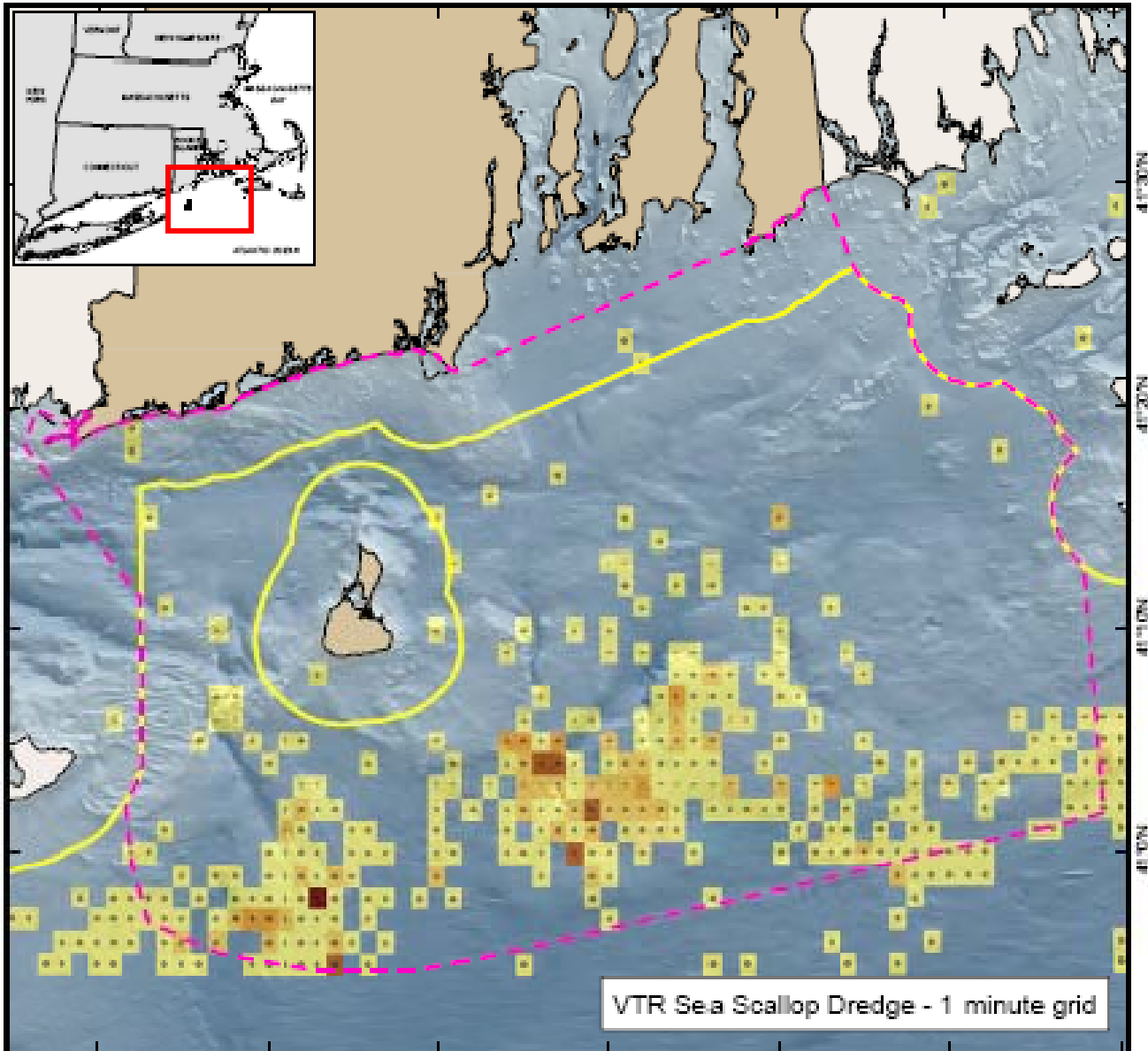


Coordinate System:  
 Projection: RI StatePlane  
 Units: Feet  
 FIPS Code: 3301  
 Datum: NAD83

Map Date:  
 State Waters: 1983, 1985, 1987  
 SAMP Study Area: RI SAMP Database  
 State Waters: BAMS SLA Boundary  
 Bathymetry: Interpolated from ADCIRC Soundings

For Project Background Information:  
<http://riagenc.gov/atlantic/oceansamp>

For Project Map and Data Products:  
<http://www.bathymetry.org/atlantic/oceansamp>


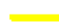


VTR Sea Scallop Dredge - 1 minute grid






# Rhode Island Ocean Special Area Management Plan (SAMP)

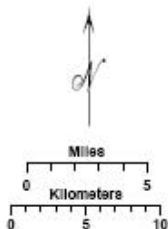
71°50'W 71°40'W 71°30'W 71°20'W 71°10'W 71°0'W 70°50'W

## Map Key

-  OceanSAMP Study Area
-  State/Federal Waters

## Number of Trips per Cell

-  6 - 50
-  51 - 100
-  101 - 200
-  201 - 300
-  301+



### Coordinate System:

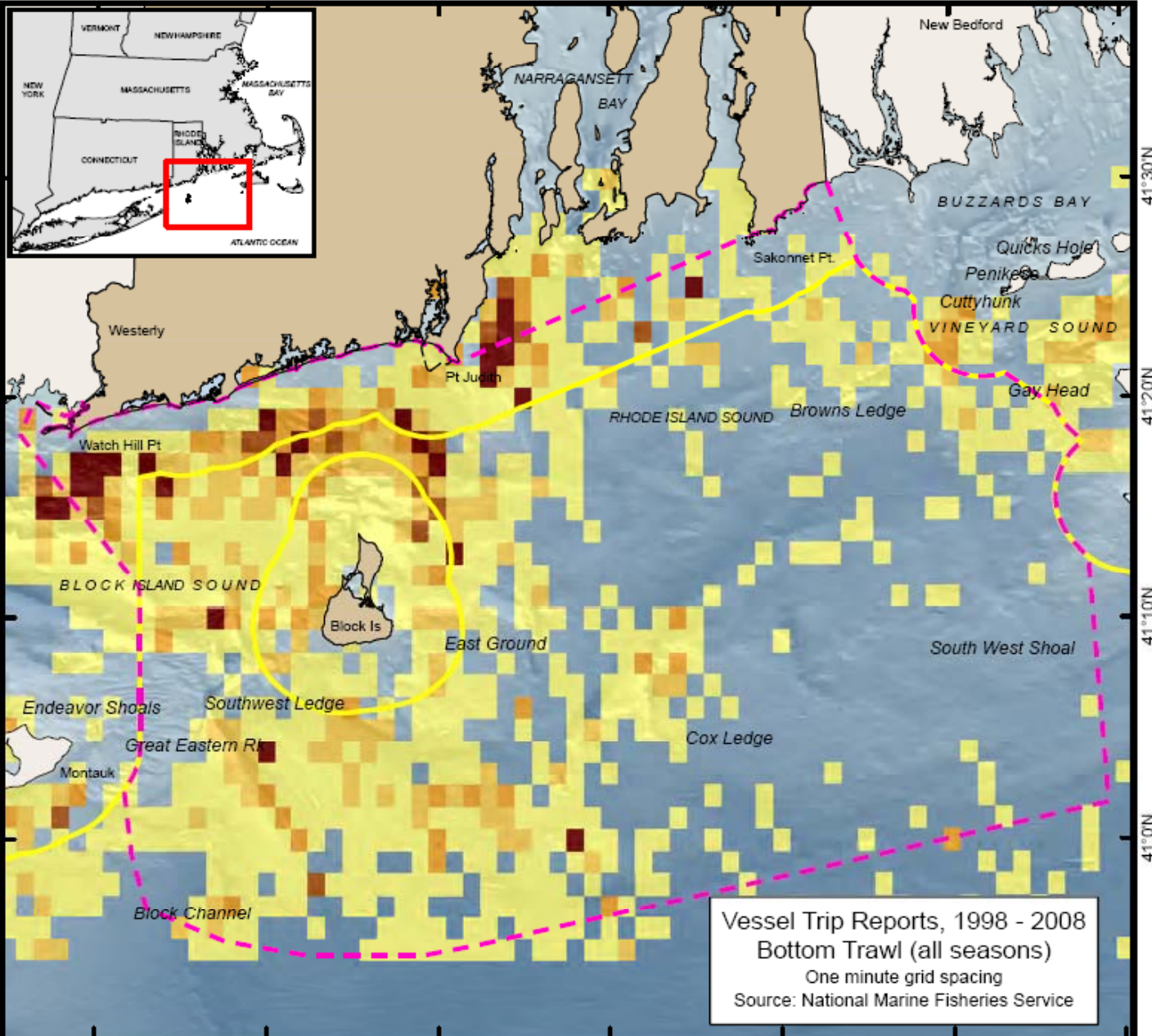
Projection: RI Stateplane  
Units: Feet  
FIPS Zone: 3800  
Datum: NAD83

### Map Base Data:

State Borders: RIGIS; MAGIS; CTGIS  
SAMP Study Area: RI SAMP Database  
State Waters: MMS SLA Boundary  
Bathymetry: Interpolated from NOS Soundings

For Project Background Information:  
<http://seagrant.gso.uri.edu/oceansamp>

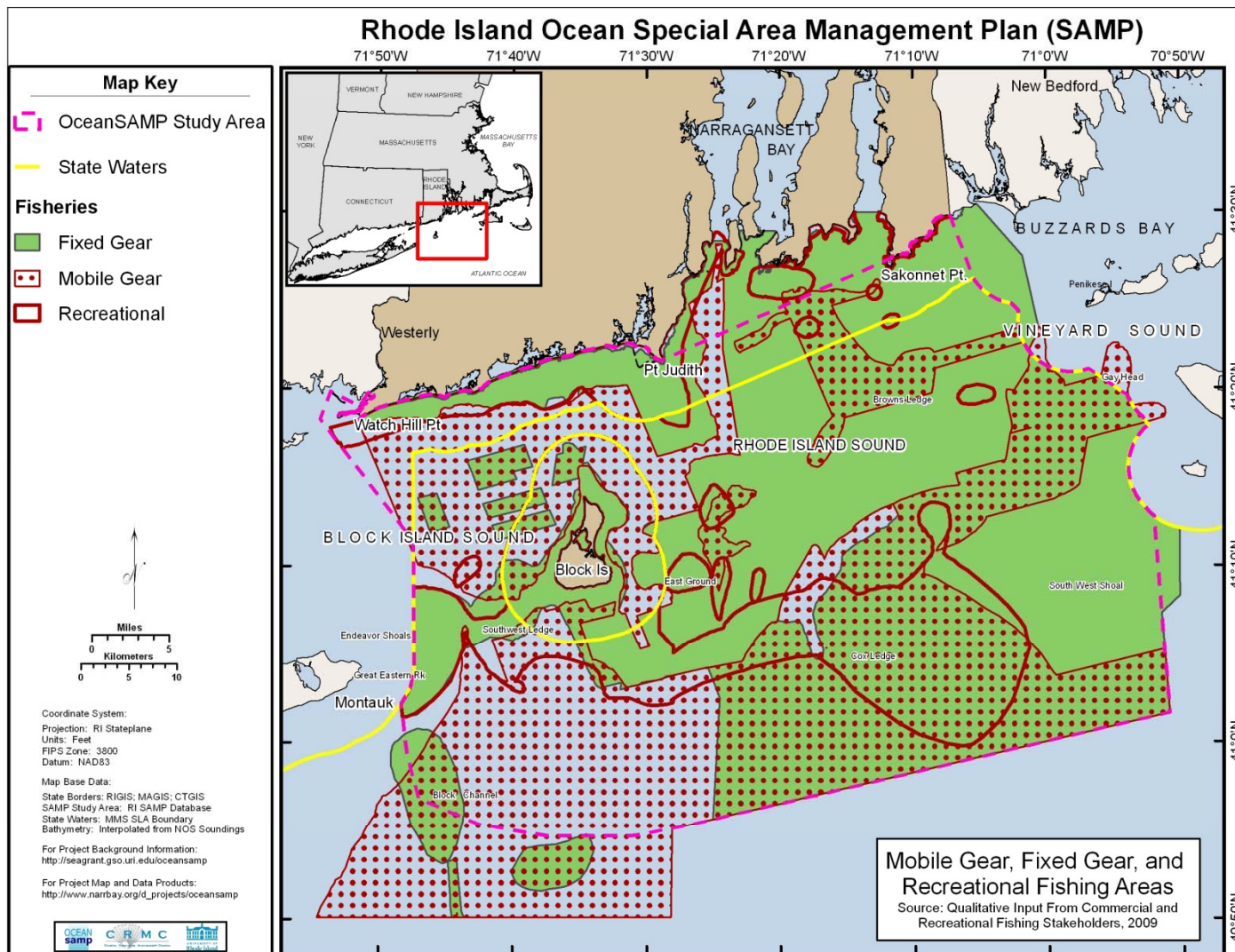
For Project Map and Data Products:  
[http://www.narrabay.org/ri\\_projects/oceansamp](http://www.narrabay.org/ri_projects/oceansamp)



Vessel Trip Reports, 1998 - 2008  
Bottom Trawl (all seasons)  
One minute grid spacing  
Source: National Marine Fisheries Service




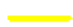
# Combined Fishing Areas








# Rhode Island Ocean Special Area Management Plan (SAMP)

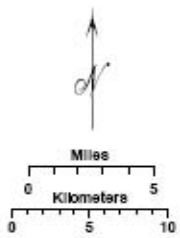
71°50'W 71°40'W 71°30'W 71°20'W 71°10'W 71°0'W 70°50'W

## Map Key

-  OceanSAMP Study Area
-  State/Federal Waters

## Number of Trips per Cell

-  6 - 50
-  51 - 100
-  101 - 200
-  201 - 300
-  301+

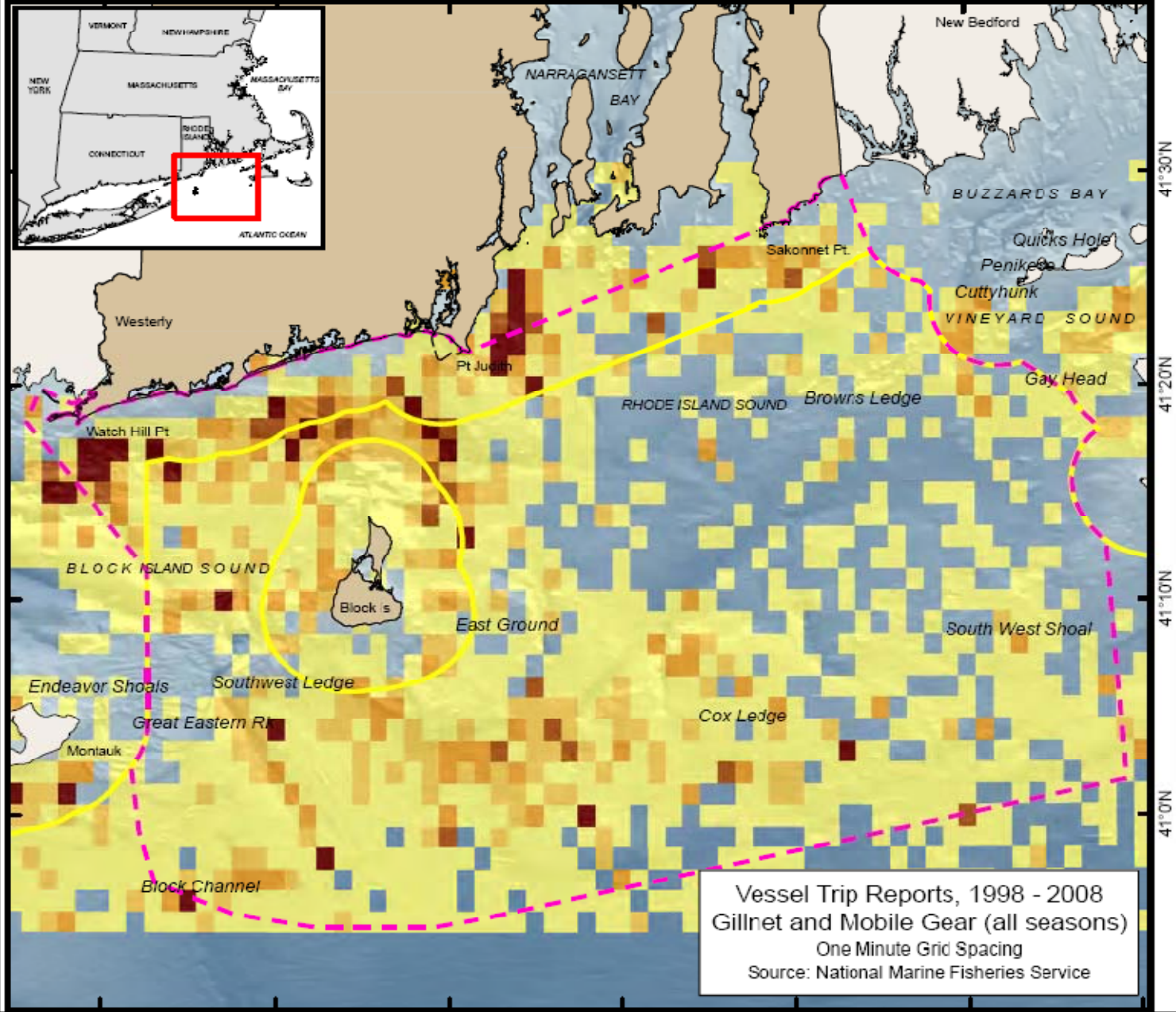


Coordinate System:  
 Projection: RI Stateplane  
 Units: Feet  
 FIPS Zone: 3800  
 Datum: NAD83

Map Base Data:  
 State Borders: RIGIS; MAGIS; CTGIS  
 SAMP Study Area: RI SAMP Database  
 State Waters: MMS SLA Boundary  
 Bathymetry: Interpolated from NOS Soundings

For Project Background Information:  
<http://seagrant.gso.uri.edu/oceansamp>

For Project Map and Data Products:  
[http://www.namrba.org/id\\_projects/oceansamp](http://www.namrba.org/id_projects/oceansamp)



Vessel Trip Reports, 1998 - 2008  
 Gillnet and Mobile Gear (all seasons)  
 One Minute Grid Spacing  
 Source: National Marine Fisheries Service

41°30'N  
41°20'N  
41°10'N  
41°0'N



# Fisheries Chapter Contents

- Marine Fisheries Resources in the SAMP Area
- Stocks of Concern
- Threatened and Endangered Species
- Fish Habitat in the SAMP Area
- Commercial and Recreational Fisheries in the SAMP Area
- Economic Significance of Fisheries
- Impacts on Fisheries Resources
- Policies and Standards



# Important Points

- Fishermen use the entire area
- Fisheries are dynamic
- Economic value of areas is dynamic
- Fisheries will be impacted
- Fisheries will continue to be important
- Fisheries do not have exclusive domain

# Related Fisheries Research Topics

- Habitat Impacts
  - Cable route
  - Structures
  - Electro-magnetic fields (EMF)
  - Noise
    - Construction
    - Operational
- Economics
- Life History
  - Spawning
  - Juvenile habitat
  - Migration patterns

# Challenges

- Data acquisition--NMFS
- Data use--NMFS
- Data inconsistency--federal/state/regional
- Economic data inconsistency
  - Methods
  - Multipliers





# STRIFE

AS LONG AS WE HAVE EACH OTHER, WE'LL NEVER RUN OUT OF PROBLEMS.

Questions?

