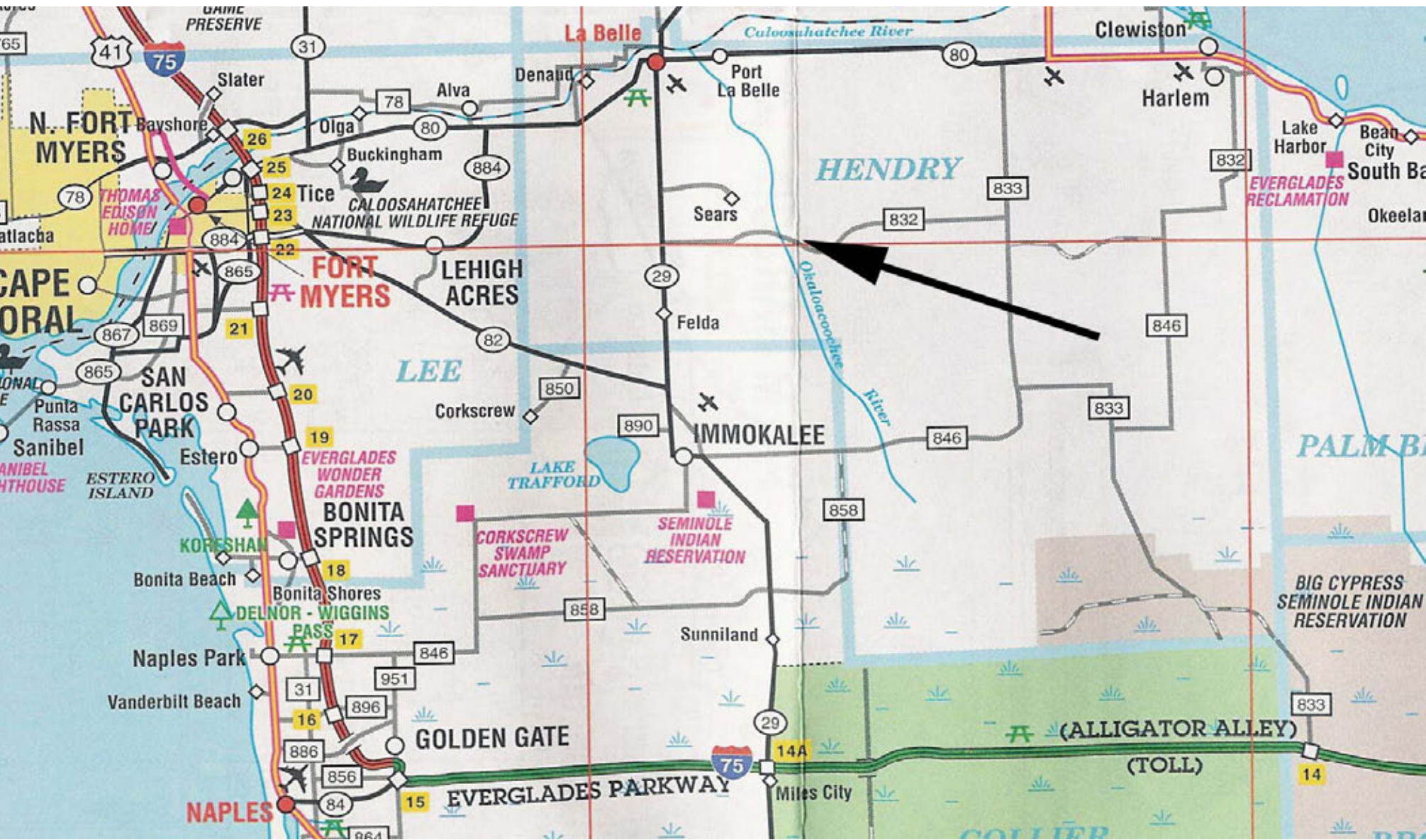


# Groundcover Restoration at Okaloacoochee Slough Wildlife Management Area

Jean McCollom, Biologist  
Florida Fish & Wildlife  
Conservation Commission








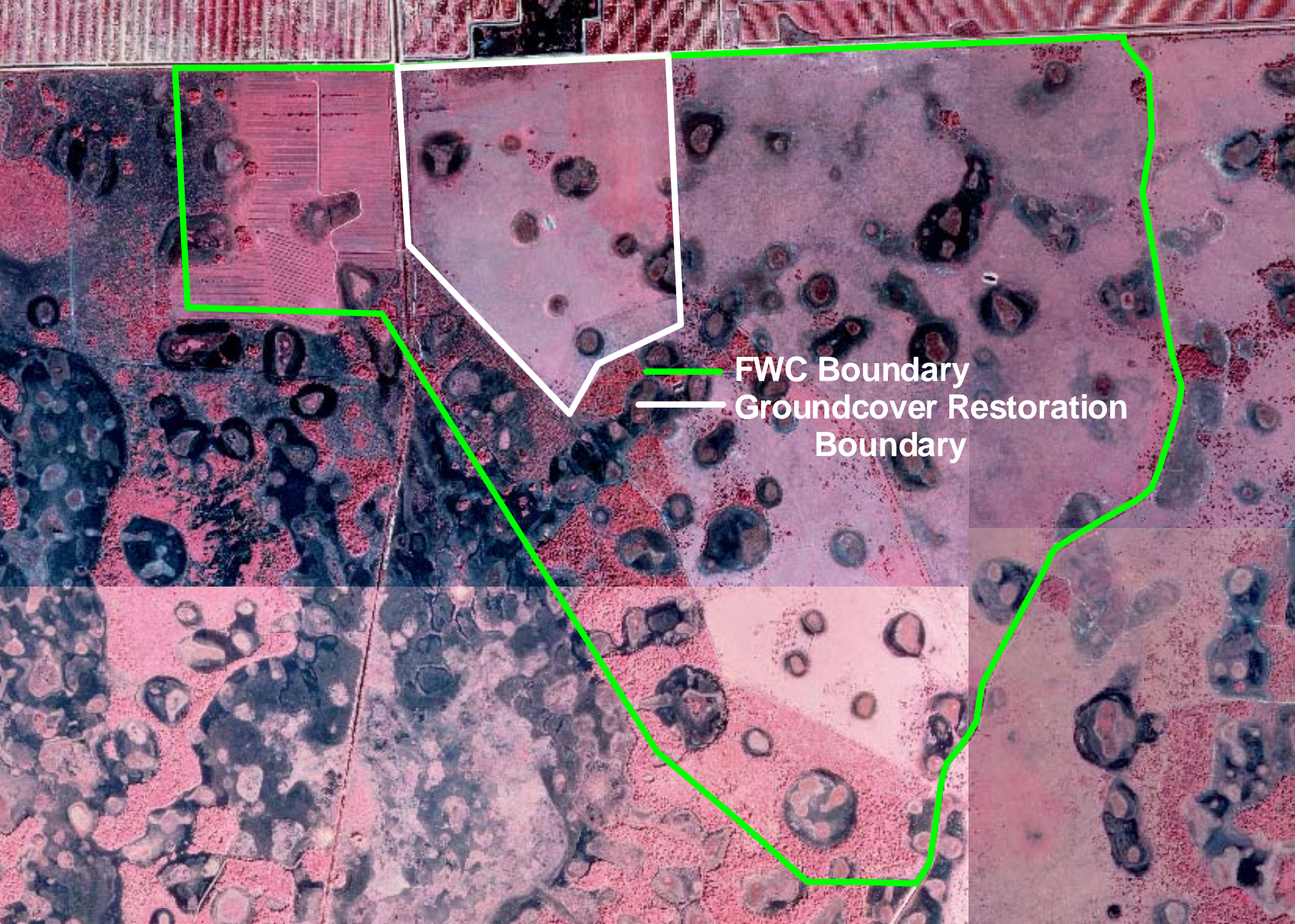


# Okaloacoochee Slough WMA Groundcover Restoration Areas

-  '03-4 Planting SFWMD grant, 50ac
-  '03-4 Unplanted 1-acre plots
-  '05-6 Planting SFWMD grant, 52ac
-  '05-6 Planting FWC Pilot, 33ac
-  '06-7 Planting SFWMD grant, 50ac
-  '06-7 Planting FWC, 50ac

  
1/4 Mile

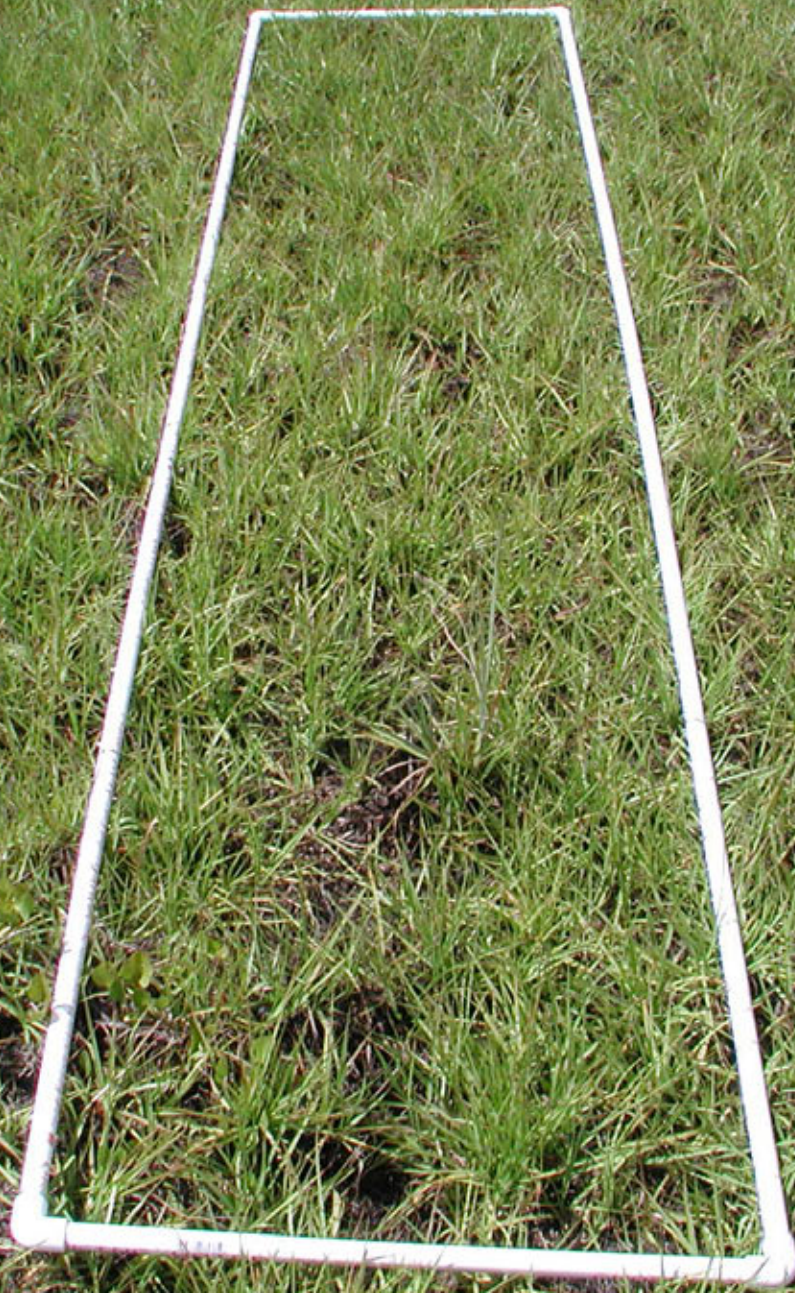




**FWC Boundary**

**Groundcover Restoration  
Boundary**







**Before burn, late Feb. 2003**





**8 days after burn March 7, 2003**





# June – July 2003 Herbicided 2% glyphosate



2 months after treatment



**2<sup>nd</sup> Herbicide Aug - Sept 2003**

2 months after 1<sup>st</sup> treatment



Herbicide until aggressive  
exotics are DEAD

# 1 cause of failure

**Could be several years if bermuda,  
torpedo, cogon, or natal grasses**



**Left 3rd disking  
with drag**

**Right 2nd disking**





# Nov 2003 - Site Prep









# Green Silage Cutter





















# Planting - Early Dec 2003









# June 2004 – Electric Fence













May 2004 pulled Tropical soda apple











**Bermudagrass**



**Smutgrass**

**June - July 2004**  
**Spot treat exotics**



**Vaseygrass**



**Bahiagrass**



Spot treat after planting

**#2 cause of failure**

**Exotics come up from the seedbank.**

**Mostly grasses;**

**requires experts**

**to distinguish good from bad.**



# Sept 2004 & 2006 Monitoring





# Dec 2005 Report

## Restoration of Native Groundcover Vegetation on Abandoned Improved Pasture at Okaloacoochee Slough Wildlife Management Area



Contract Number OT040604

submitted to the

**South Florida Water Management District**

Big Cypress Basin Watershed Initiative

By

**Florida Fish and Wildlife Conservation Commission**

**Jean McCollom**, Biologist III

Okaloacoochee Slough Wildlife Management Area

P. O. Box 716, Felda, FL 33936

863/612-0775 suncom 744-0775

December 2005



# FFWCC GCR\*

## Pilot Project



\*groundcover  
restoration







Donor Site 2005





# Donor Site 2005







Hand Collecting June - Nov 2005



# Lopsided Indiangrass



small  
green  
stage

A close-up photograph of a young Lopsided Indiangrass seedling. The plant is small and green, with a prominent, upright panicle of fine, feathery spikelets. The base of the plant is white and fibrous, resting on a dark brown, textured surface.



fetta  
cheese  
stage

A close-up photograph of a Lopsided Indiangrass seedling in the 'fetta cheese' stage. The plant is larger than the green stage, with a more developed panicle. The base of the plant is white and fibrous, resting on a dark brown, textured surface.



ripe

A close-up photograph of a ripe Lopsided Indiangrass seedling. The plant is fully developed, with a large, upright panicle of fine, feathery spikelets. The base of the plant is white and fibrous, resting on a dark brown, textured surface.



# 12-ft Flail-vac







Oct 2005 –  
Collect Lopsided Indiangrass



# 6-ft Flailvac



Nov – Dec 2005  
Collect Wiregrass mix















# 8-ft Grasslander





















## Costs for Groundcover Restoration Work at OK Slough WMA

Seed Collection & Planting	Contracted		In House	
	C-05	C-06	F-05	F-06
Burning (donor site only)			\$1,380	\$1,380
Equipment Parts & Repair			\$1,700	\$1,700
Hand Seed Collection			\$1,348	\$990
Mechanical Seed Collection			\$12,831	\$5,193
Seed Handling				\$4,707
Planting Seed			\$3,893	\$3,503
Total	\$61,714	\$56,030	\$21,153	\$17,473
Average	\$58,872		\$19,313	

**DOES NOT INCLUDE:**  
 gas, overhead, vehicle & equipment cost & upkeep  
 2 tractors for both collecting & seeding  
 burn equipment  
 ca \$60,000 for harvesting & planting equipment  
 (Grasslander \$16,000, 6-ft Flail-vac \$9,500)

Other Costs	
Contracts, Planning, Grants, Mtgs	\$2,300
Herbicide Treatment	\$18,000
Site Prep	\$2,000
Fencing	\$8,000
Post Planting Herbicide Maintenance	\$21,000
Monitoring	\$7,500
Report	\$3,000
<b>Cost for 2 years for Above</b>	<b>\$61,800</b>

	Other Costs	\$61,800	\$61,800
	Collecting & Planting Seed	\$58,872 (Contracted)	\$19,313 (In House)
	Cost for 2 years, 50 acres	\$120,672	\$81,113
	<i>Cost for 2 years per acre</i>	\$2,413	\$1,622



# Staff Time

with **Contracted** Seed Collection & Planting took  
**13 weeks** over 2 years

with **In-house** Seed Collection & Planting took  
**40 weeks** over 2 years

But

Shaved 7 weeks off the 2<sup>nd</sup> time

This is a big committment















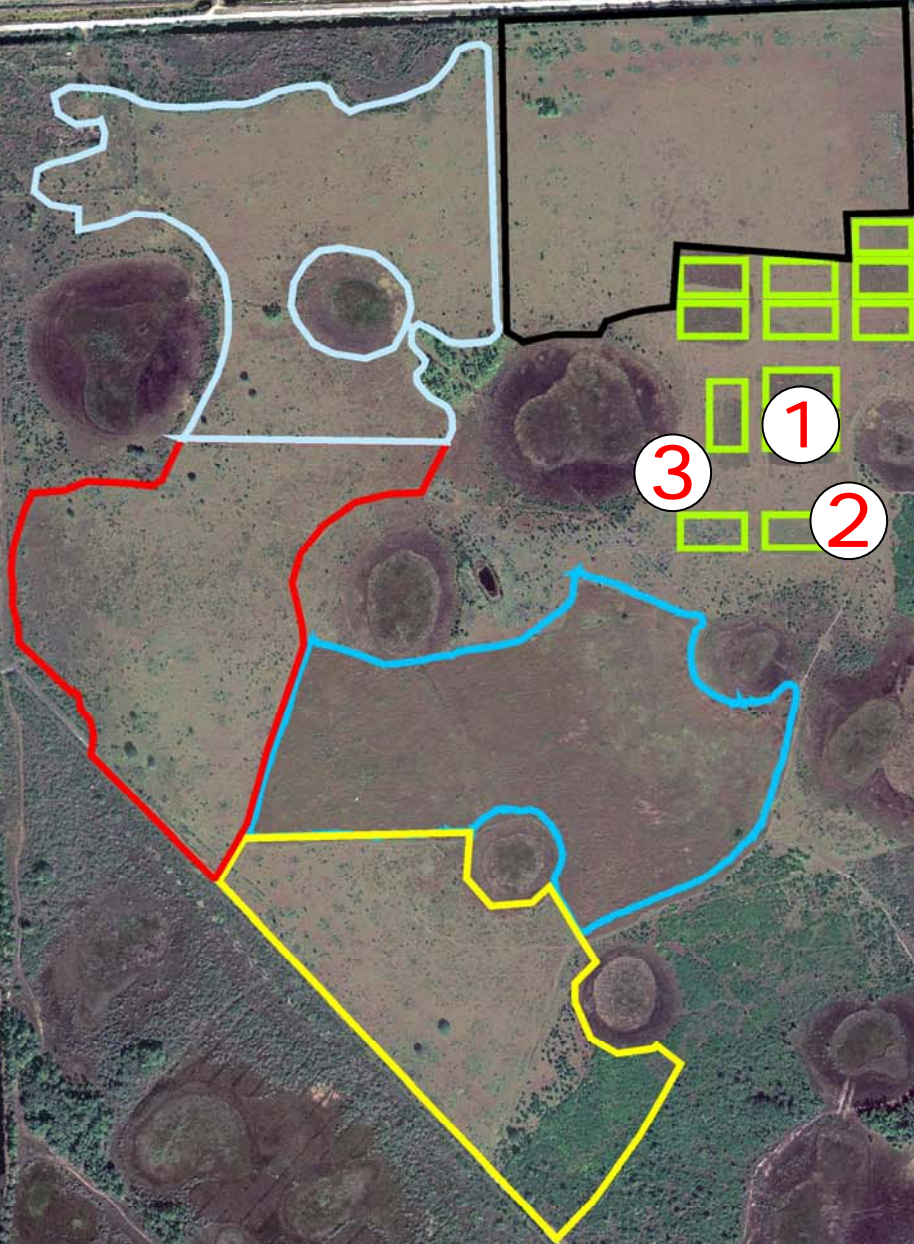








# Okaloacoochee Slough WMA Groundcover Restoration Areas



-  '03-4 Planting SFWMD grant, 50ac
-  '03-4 Unplanted 1-acre plots
-  '05-6 Planting SFWMD grant, 52ac
-  '05-6 Planting FWC Pilot, 33ac
-  '06-7 Planting SFWMD grant, 50ac
-  '06-7 Planting FWC, 50ac

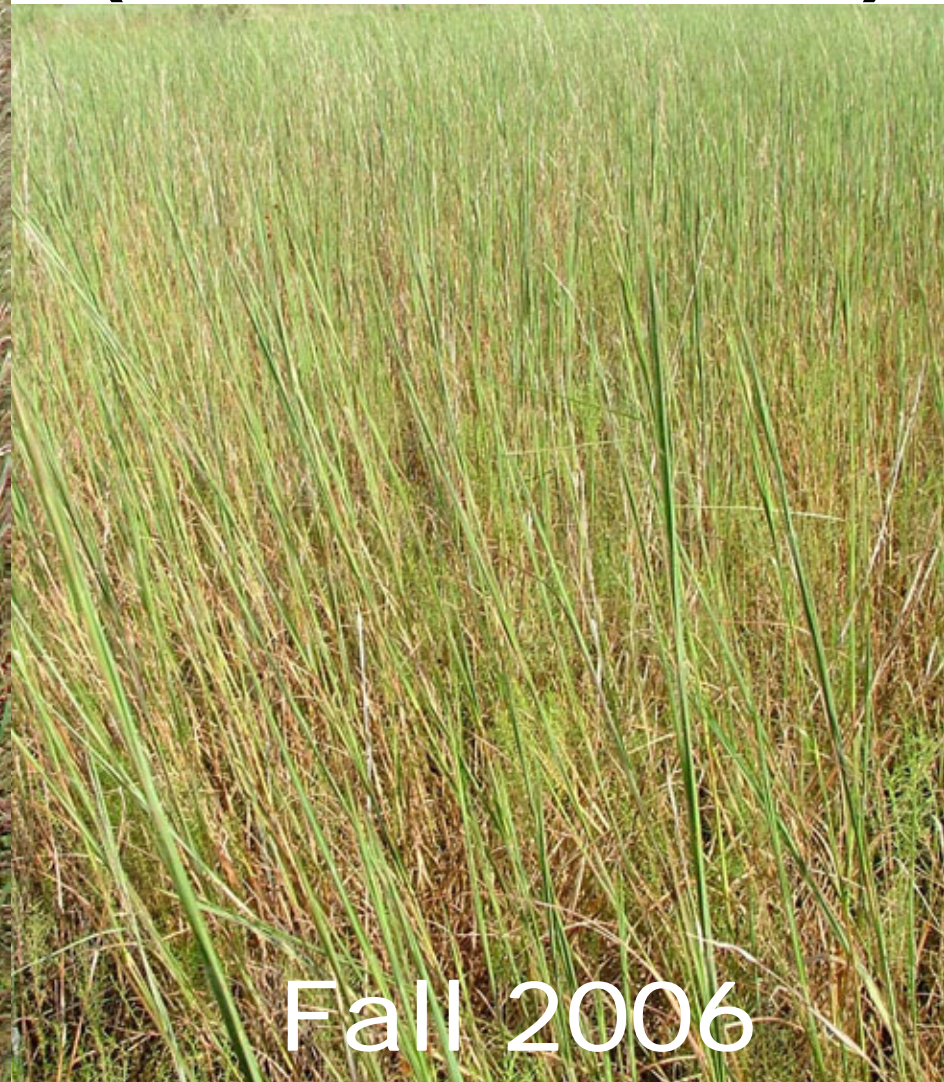
1/4 Mile



**Sprayed June &  
Sept 2003  
(normal rainfall)**



**Fall 2004**



**Fall 2006**



**Sprayed  
June  
& Sept  
2005**



**Fall 2006**



**Fall 2006**

**2005 was a  
very wet year**





Fall 2006







**Sprayed Dec. 2004,  
left burned April 2005---right unburned**



Sprayed Dec. 2004 & burned April 2005



June 2005



May 2006



**Sprayed Dec. 2004 & unburned**



**June 2005**











































Sprayed Dec 2004

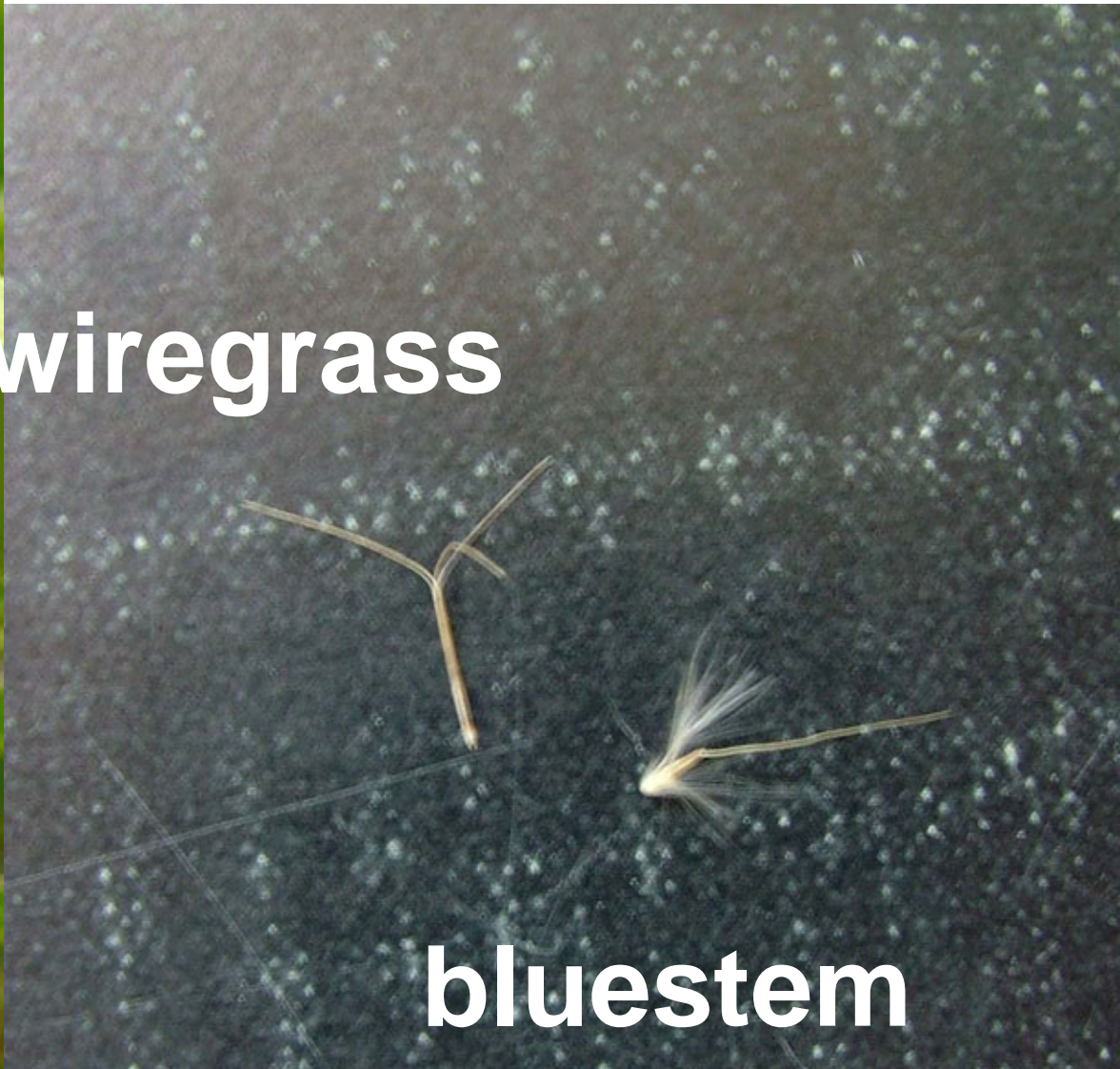


Sept 2005





**wiregrass**



**bluestem**