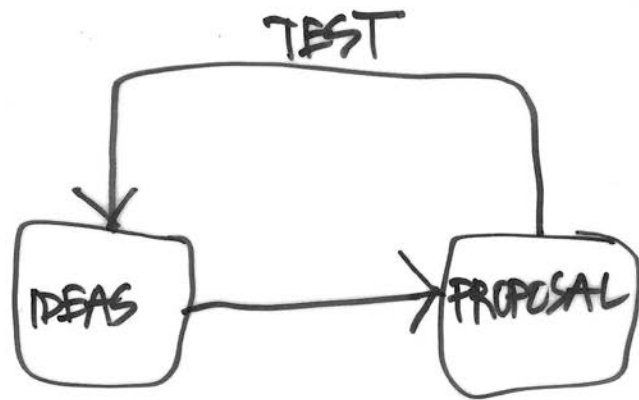


unsettlement design ecology

jim gall



design actually



design is what makes us human – its what we do

prefigurative process

imagination and testing

knowledge/understanding

complexity (relationality)

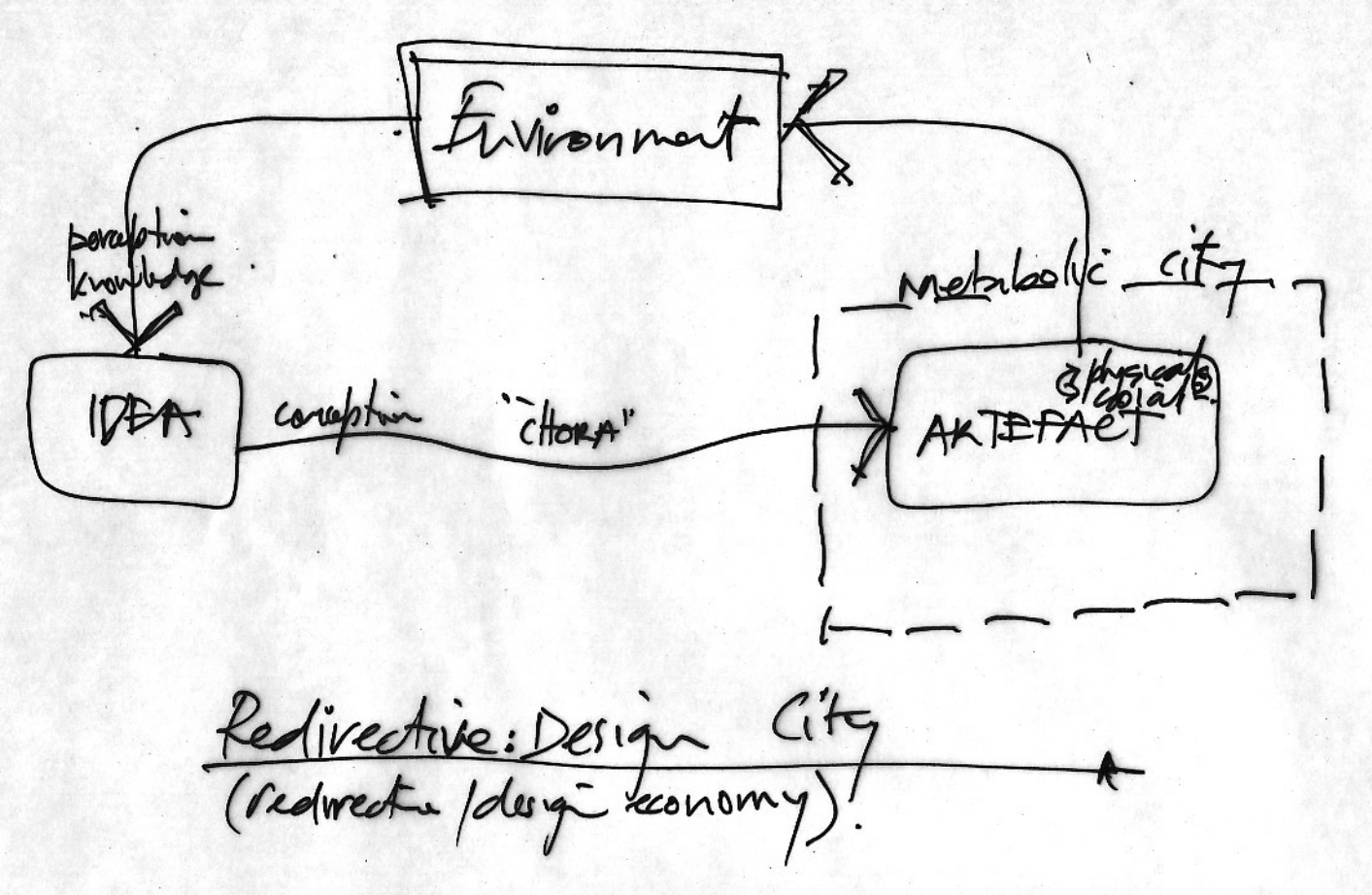
people

a social process

cultural

political (“political”)

through what we design we design ourselves



sustain

environment

everything

outside us

between us

inside us

complexity relationality

“the opposite of reductionist, linear thinking. It aligns our thinking with ecological processes: looking for interactions and *other* dimensions”.

context

climate/land generates culture

disconnection through design

unsettlement



SDG#2
ZERO HUNGER
BUILDING A SUSTAINABLE WORLD: LIFE IN THE BALANCE



Text columns on an orange background, likely containing project descriptions or reports.

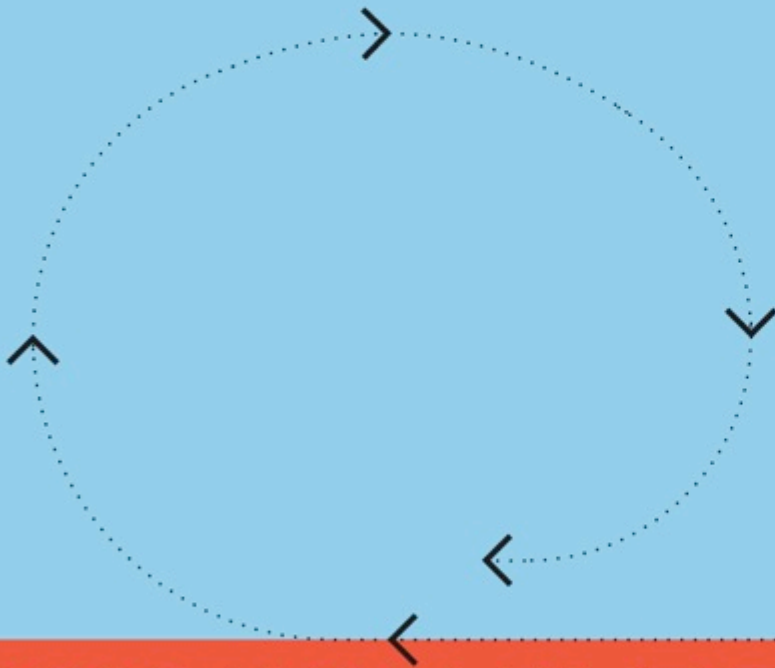
Text columns on a red background, likely containing project descriptions or reports.



A SUSTAINABLE CITY FOR 50 000 PEOPLE

A WAY OF DESIGNING A CITY ABLE TO GENERATE OTHER CITIES OF DIFFERENCE

A METHOD THAT TRANSFORMS HOW AND WHAT WE DESIGN



WHAT WE HAVE DESIGNED

Gall & Medek + Team D/E/S – Boonah Two
REDIRECTIVE PRACTICE AND THE CITY

**FACTORS IN FUTURING A CITY
BY REDIRECTIVE PRACTICE**

Futuring and redirective practice – a path to a sustainable world

Constructing a sustainable city equals building a material fabric, operational system, economy and social ecology

Providing power renewably – an act of futuring

Feeding and watering the city – part of its metabolic existence

Social participation in sustainment – a bringer of life of the common good

The social relations of care – something of the world to do and feel

The generation of attraction – desirability is also a sustaining power

Protection over time and space: an imperative of creation

Generative knowledge – gathering ideas and knowledge is powerful

Above all, designing within a metabolic model, which means – understanding that catchment-based settlement is directly connected to its region's ecological carrying capacity, natural resources and goods, services and human capital. This includes a capability for adaptive self reproduction, an ability for the city to feed, water itself and manage all its forms of waste, maintain the health and wellbeing of its population and grow other cities from the same ecological stock.

.....
KEY ELEMENTS OF REDIRECTIVE PRACTICE
.....

Design from the future to the present

Design as a means of care system

Design the symbolic power of Sustainment

Design the move from the quantitative to the qualitative economy

Design for elimination of the unsustainable

Design climatic defensive architecture

Design to conserve natural and fabricated resources

Design to deploy old and new sustainable practices and technologies

Design adaptive social, cultural and community structures and processes

Design organisational and political models appropriate to a culture of sustainment

.....
Gall & Medek

jim@gallandmedek.com.au

www.gallandmedek.com.au

Team D/E/S, Sustainment Designers

teamdes@teamdes.com.au

www.teamdes.com.au



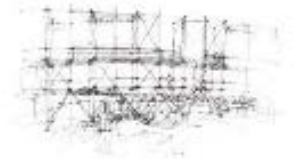
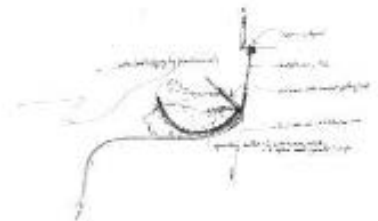
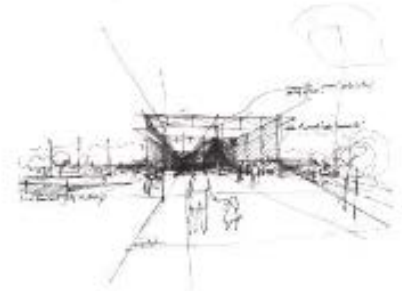
gold coast



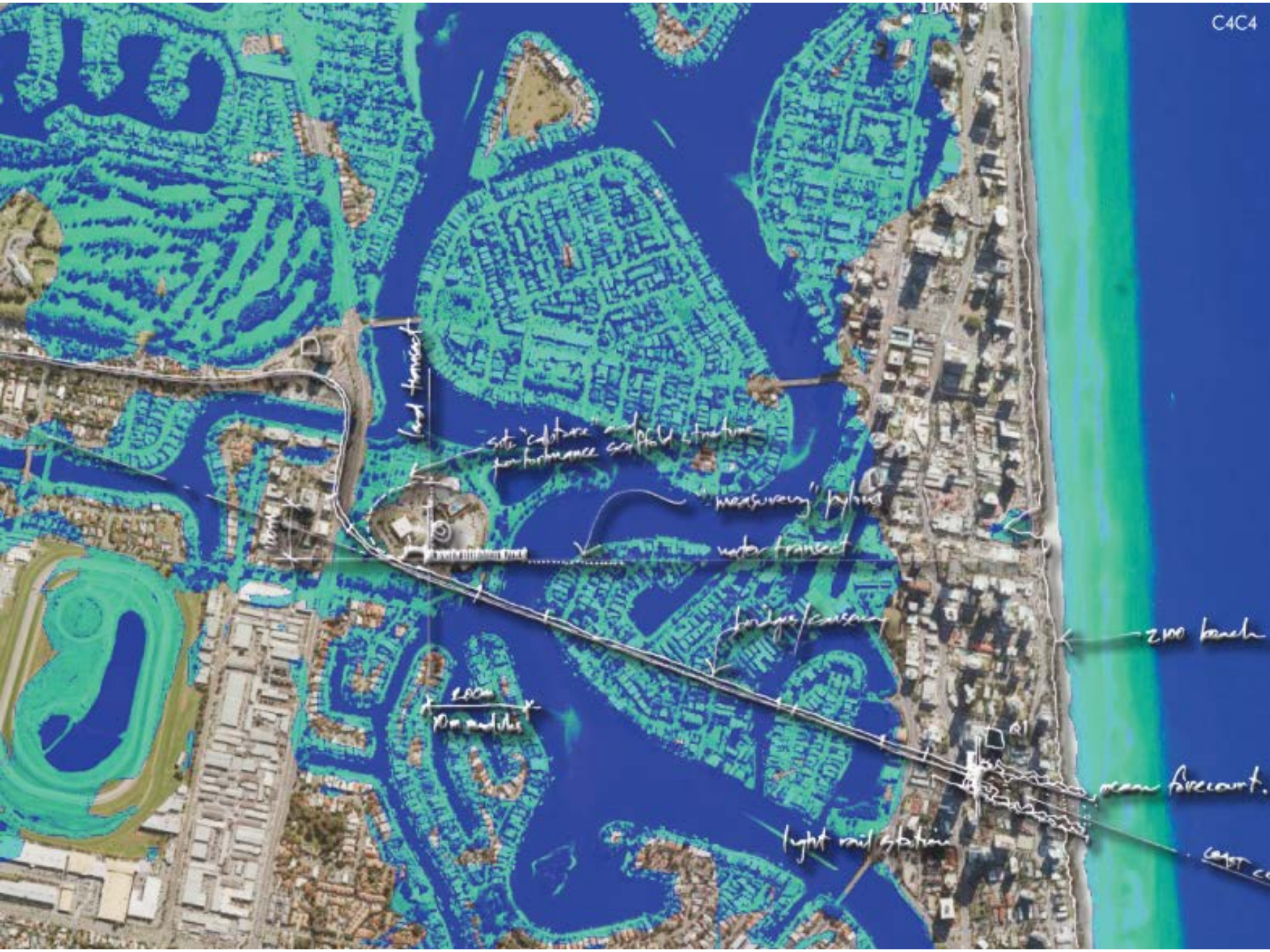
Our thinking started with the brief and the Civic Centre Site, but a small amount of thought and research quickly revealed wider and more urgent concerns. We believe current and future threats require immediate and appropriate responses.

We feel the Project and the Site offer a 'front door' to enter and view the 'Gold Coast 1' as a city under threat and in need of change.

The Cultural Precinct site, which is the focus of the competition, nevertheless, is a useful study platform for illustrating the types of structures/elements that might accommodate educational and experiential visitors (Tourists) to Gold Coast 2. These will stimulate and communicate memories and lessons from history.







land transect

site culture and place structure for performance analysis

'measuring' physics

water transect

bridge crossing

light rail station

2000 ft. analysis

2000 ft. transect

mean forecast.

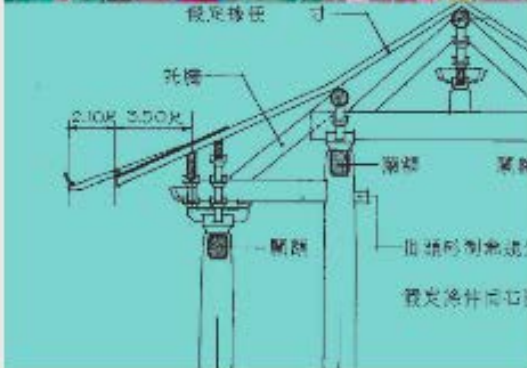
1000 ft. transect

The high tide of 2050.

An increase in storm frequency and intensity will generate greater impacts as evidenced by recent events. There is already community disaster in Bayside Bay.

Such disaster in response to a single comparatively small event illustrates the need for government and social, pre-emptive action.

1m



• ICER

The Intercultural Change Resort is a space of education and entertainment, learning and pleasure. It can be visited for single event or engage visitors for a week or more.

It can be engaged actively - the Inter-Action Environment is a participatory environment with many big and small challenges for adults and children alike.

ICER takes its messages and pleasures to the Gold Coast two

regions and the world. ICER's facilities are all about 'exchange culture' and 'cultural adaptation' based on the history and future of the world's cultures.

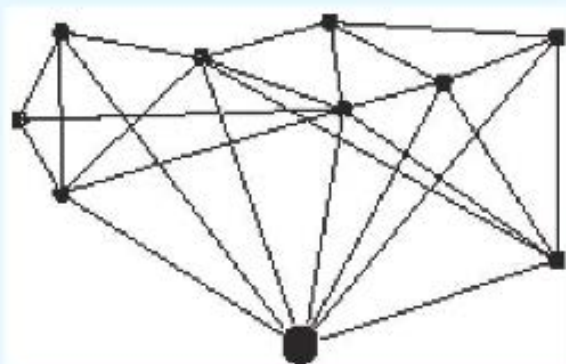
It embraces cultural translation in every aspect: language, customs and ways of life, law, life and death. ICER is not just about sampling cultural futures, its about making them and globally exporting them.



new culture

This is the high tide level reached. Remembering that current greenhouse gas emissions and the growth in emissions are higher than the most pessimistic projections of 5 years ago.

2m



WORLD LINK MULTIVERSITY

new industry

• Multiversity

Created out of the experience of the Gold Coast 'Courage-to-Move' Program with initial links formed with cities in the Asia Pacific who equally are confronting the challenges of climate change over at least the next four centuries. From the regional realisation of the World-Link Multiversity concept would be exported to the rest of the world.

Created to lead change, build knowledge and manage adaptive transformation in the face of a changing climate.

Created with the key research and learning areas of moving cities, moving populations, developing new economies, preventing conflict, conserving memory, advancing food production, mining abandoned resources, developing new communities and establishing new modes of governance. Created to bank knowledge, exchange

expertise, grow post-national cultures and establish a learning environment beyond the disciplinary and organisational limitations of the modern university.

Created to lead change, build knowledge and manage adaptive transformation in the face of a changing climate.

Created with the key research and learning areas of moving cities, moving populations, developing new economies, preventing conflict, conserving memory, advancing food production, mining abandoned resources, developing new communities and establishing new modes of governance.

Created to bank knowledge, exchange expertise, grow post-national cultures and establish a learning environment beyond the disciplinary and organisational limitations of the modern university.



• House Boat Industry

A new industry and employment opportunities would result from a new floating suburb. Also, the flooding of major road systems will require the increase of water vessels and infrastructure throughout the flood-prone areas of the Gold Coast.

The existing local boat building design and manufacturing capability means the know-how to create the new industry already exists. The market for the industry is worldwide and the floating suburbs of Gold Coast 2 could be its marketing showcase.

This will be the area effected by storm surges by 2000 if no action. These areas will be uninhabitable although only intermittently inundated. Therefore, they will best be areas for nature regeneration, seawall and a few and produce activities such as fish farming

4m



• Archipelago & Memories

Areas of the Gold Coast above 4m above the existing sea level will form a disconnected archipelago. These will not islands surrounded only by water but also by abandoned and regenerated areas. Many islands may be too small or too disconnected to be viably inhabited and so will be abandoned, mined for resources and also regenerated.

A transformed layer of connections will have to be designed starting with key primary connections with a liner web developing as viability is analysed.

Any land within 3km of the coast will be subject to extreme wind cyclonic events. The present low dune "air a" will probably survive, losing it's current 100m (approx) to erosion as a new beach forms.

Any remaining area will provide powerful memories of the Gold Coast as it is/was, but any structures remaining will have to be strengthened and modified materially and in Use.



• Moving Inland

This is a proposed Satellite City to the northwest of Gold Coast 2, with a connecting corridor to it. It would have a new industry development and industry relocation focus,

be a regional "population growth response area" and offer a culture industry hub to support the regional development of this industry.



• Floating Homes

Projected sea level rises will see the flooding of many residential areas of the Gold Coast. The beach and ocean side living, which is a huge part of the local culture, will be lost.

The "floating suburbs concept" recognises the opportunity to utilize innovative and sustainable design to reclaim the space of residential areas. The redesign of houseboat style living is one option that will provide secure, mobile, and flexible living solutions for the diverse Gold Coast community.

Sounds futuristic or unrealistic? Consider the current success of houseboat and marina style communities throughout the world. Floating communities already exist in the USA, South East Asia and Western Europe. A number of innovative companies, architects and planners are developing ways to make floating communities a viable solution to the impacts of population growth and global warming.

new suburbs... new city

charleville futures project

climate change

cost of oil

tourism

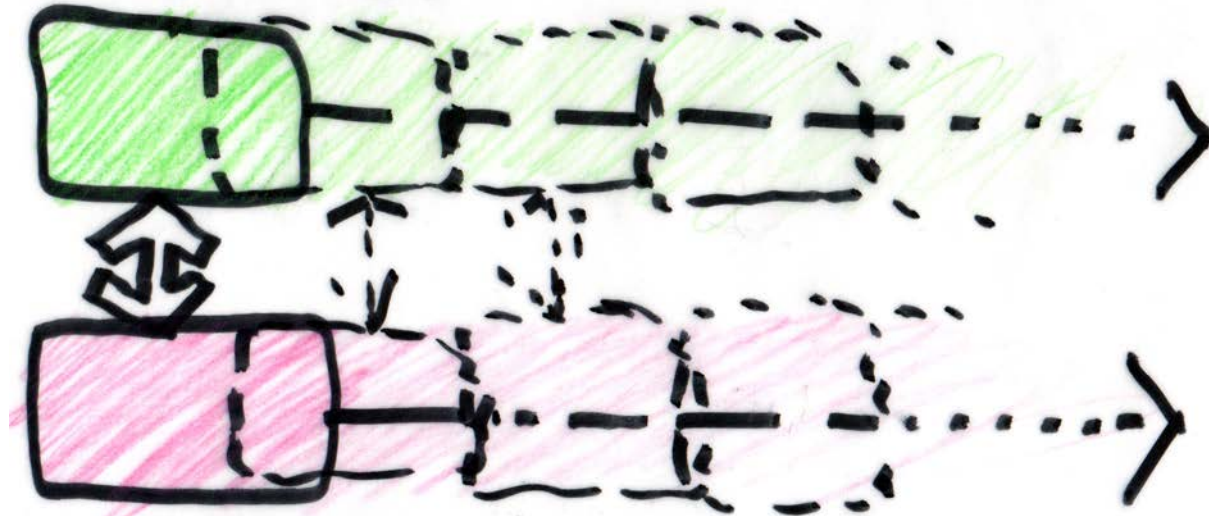
economy

design in/as governance

future scenarios and visions

Biophysical
social
economic
cultural

SCENARIO(S)



VISION(S)

activities
experiences
meaning

dwell

gather

learn

reconnect through design

design the conditions for cultural change: symbols and signs of what is in the future

